

June / July 2006

Wednes. 21 June 2006

Site having been cleared of a years overgrowth
today we proceeded with the removal of backfill
in all trenches. Room 38, specifically,
was emptied on both north and south ends.
First area of work in this room will be
in the SE section - Contact C#06#728, 712.

Complex 2

Room 38

semi-circular cut in bedrock
in S corner of room

filling of 729

forcement of wall 264

hold of door to Stenepros

unaid cut in the bedrock
the E side of the room
closed - (6/22)

of loose brown soil with
in SE part of Room 38

stones in N. corner of
cut of Room 38

brown fill with loose bits

- * 650 Negative Cut along bedrock along mud of room 38
- * 649 Positive Compact light brown layer mixed with stones in SE part
- * 621 Positive Dark brownish loose soil in pit 601, NW side of Room 38
- * 613 Negative Cut for post hole next to N
- * 610 Positive Compact soil surface in SW corner in Room 38
- * 609 Positive Fill of cut in N corner (cut = 608)
- * 608 Neg. Cut in N corner of room
- * 606 Positive Compact clayish surface in N
- * 604 Negative Cut of a channel around p

concentration of pebbles and
is next to N corner

layer of tiles and articulated
sills

Thurs. 22 June 2006

Small Finds

Short day - because of rain.

3385 - Bronze Coin

Began with excavating in Room 38.

Contact 728 (area - the cut in E side of R
layer (context) 712 - incomplete from last
year's season.

Began by instructing trench members
Emily and Ishan on existing large
goals, and details of excavation
and using a sieve.

In first bucket, bronze coin, byzantine glass
(2 pieces), small diagnostic pottery, bones
and many seashells were recovered.

2 buckets of 712 collected - only one taken
to sieve.

#511

AS found beneath
(perhaps should not count as
paleobotanical)

Special finds)

3386

3387

3388

Several bronze objects
from sieve

Special find

in #0712, E column of

section

Whi 3390

fragment 3391

④ Two small bronze fragments
found together -
mapped with total station

3394

④ Iron object
found in middle of trench - mapped

3396

④ Bronze pin
found in center of trench - mapped

33

④ Bronze object - fragment
found in center in trench

3398

④ Iron object - likely not a nail
found in center area of trench

3399

④ Bronze fragment
in E corner of trench

3400

date because of extensive
trenches were wet, with
marring in areas of Room 38.

on stratigraphic layers
the team started

728, layer 712.

small metal objects - including

fragments and small

to the the central section

the ~~NE~~ corner, where

moved from beneath

?) left last season.

The dirt beneath this

is thus excavated

and the central section of

is primarily by Ishan -

small items

The soil in 712 tends to be fairly easy to move, not too compacted, with a light brown color. Two additional layers have been visible - one in the extreme SE corner of the room (directly beneath the stone left last season) that is characterized by a softer (perhaps with less clay content) to 712 darker brown texture (this will be context 712).

Another layer, yet unnumbered, began to appear in the western part of the center of the context. This is characterized by an ashy soil - but was left unexcavated pending the removal of 712, which covers

A small area of charred remains - wood was discovered at the start of the day - along the E. wall of the context (larger

1/2 into 728,

designated for E corner

initially from this
108

- Iron object
cuts along E wall

mapped

coin-

part, cut in semi-circular
shape

re.

Description -

Note to Self
take a picture

- make 2 contact's
- one for green
- one for brown

When removing T12, ~~we found~~ an ashy p
of soil began appearing. Following this
we removed T12 to reveal not just
an ashy layer but an intermediate
layer of dark brown, looser soil.
Both layers are given contact #'s.

⊗ Ashy layer = contact 0754

⊗ Brown layer = contact 0753

The ash layer - at this moment - mea
approximately 150 x 150 cm. See picture

ated the removal of
underneath it, in the
trench, appeared
This is cloua cemented
has many rocks and
not compacted. (0754)

beneath it is a darker
3 - that is much

We initially believed
be beneath it but,
we realized that it
0754 covers 0753.

- layer 712

by speaking, had quite
s and debris. There were
in this layer (over the

Small finds: Tiles IIII [Nails] ~~IIII~~

3415 Bronze Object (small flat piece, insigne)

3416 Iron Object (large, flat; maybe door hinge)

3417 Bronze Object (narrow, solid tube shape) mapped

3418 Bronze Coin (Basut coin, mapped)

3419 Iron Object (small, flat object) mapped

3420 Iron Object (very large lump - mapped)

[0518] Architectural Sample
(clay on E wall)

3421 Bronze Coin (mapped)

3422 Architectural Fragment (mapped)
(marble)

3423 Bronze coin (found in sieve)

3424 Marked bone - with concentric circles

ndary.

g 754 - in a semicircular

gan removing it, the

- began to show

1 line of stones came

side of 754 but, as they

were beneath these, we

s.

to have quite a few

s. Although they, at

e some pattern of location,

does not seem to be

e context, we revealed

i - very loose, soft brown

As Emily was cleaning the remainder of this layer from the N wall of the trench we noticed that it is (at least) appears to be 1m² of the k that as much charcoal in this layer - and quite a bit more rocks and sea shells.

Contact # 753

Tiles |

80 Nails map

3426 - Bronze/Iron Composite

3428 - Bronze Piece (in sieve)

3429 - Bronze coin (in sieve)

After clearing away 0754, taking photographs and pm points for elevation

the group began removing 0753.

This layer is characterized by soft, mass

clear and hot.

continued with the
metals we began
of late.

detached by using

to determine where
- because we are

with layers of

small fragment

and a large

dark glass bracelet

according to

7th century

3431 Fragment of Bronze Coin (mapped)

3432 Fragment of Black Bracelet
(in sieve)

3433 Bronze object (very small) - mapped

3434 Bronze Coin from sieve

3435 Stone Ball (mapped)

3438 Frag. of Bronze Coin - mapped

3439 Lead Ball - in sieve

3440 Architectural Fragment
Piece of stone

3441 Bronze Piece (mapped)

3443 Stone Ball (mapped)

3444 - worked stone, weight
(in sieve)

3445 - Bronze Coin - mapped

3446 - Architectural Fragment

over of the room where
the new students
group and help with
each, emptying buckets.

begin to find a
iron nails, bronze
glass. There had been
we had no special
went deeper, we began

trench-wide
area where we had
a new context several

Finally, we seem to have found the
layer beneath 753 - but, at this
only in the W corner of the context.
This layer is more clay-like and
along the W wall, a very large
(possibly a paver).

20 nails mapped

mapped)

Fragment
mapped)

(mapped)

Fragment (mapped)

(mapped)

(flat with hole; mapped)

(mapped)

(mapped)

(mapped)

ment - marble (mapped)

(in sieve)

Marble (mapped)

~~(mapped)~~ Bronze object (in sieve)

Ice (in sieve)

in sieve

2-5 1 1/2 10 3
Tile Bucket NI

Nails 28

NEW CORNER
0768

Morning was dry and warm.

We started quickly with continuing to remove layer 753 in cut 728. This layer is very thick and consists of very much debris many nails, coins and a lot of ceramic. We unselected the soil and determined 2.54 4/2 was fairly close.

In the W. corner we have revealed and numbered the next context layer, #70.

This layer (753) is very full of stones - large and small, scattered throughout the context.

We found a heavily corroded metal

it remaining in
cut 728
~~the~~ (the corners
it be removed tomorrow.

dam investigated the
next level, which
be the floor of an
one of this area room.

ample - however clear
- because there appears
material, compact debris
top of the claystone
will be investigated
morning with
trowel.

it has been so rich in

There has also been a great deal of pottery
bags sent for washing to this
point. The ceramic is heavy in the
yellow/green/brown glazed type, and
also some very large fragments of
pythoi.

There has also been a great deal of bone
and seashells (2+ bags of each - 2
small bones, 2 large bones, 2 seashells
today).

The day, we began work
off yesterday - trying to
floor layer in the
floor was found, it
in the E corner and
ed, slightly yellow in
clay-like. At this point,
beaten floor because of
and the fact that all
nd stones are lying flat,
ting upwards.

the day, after taking
in the surrounding
finding this clay layer -

New layer # 780 Munsee 104R 4/3
in small circular cut in W side of
room

dark brown, damp but light weight
soil. It has very little debris and
has very few stones or gravel. It almost
looks sifted - it is uniform and loose

The N end of the layer seems more loose
and goes lower than the S end. The
S end appears to have far more
clay in it - and it is more compact
I am concerned that this compaction
is a result of our walking on it.

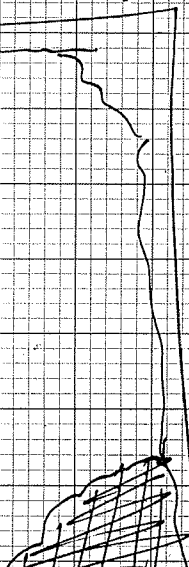
After looking at this layer with Gordon
we decided that we are actually looking

Flaque?; mapped)
+ (broken; mapped)

753

very compact w
brown soil at W
corner of 88 part of room 38
→ N

785



Positive

784

in E corner

3506 Bronze Coin

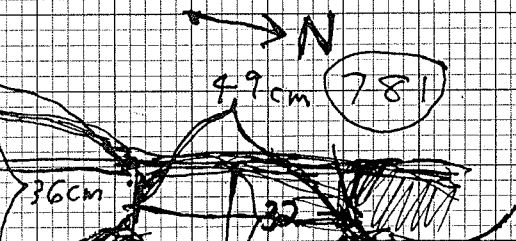
3508 Frag Roman Lamp

Context 784
3511 Bronze Object

measurements of 780 →

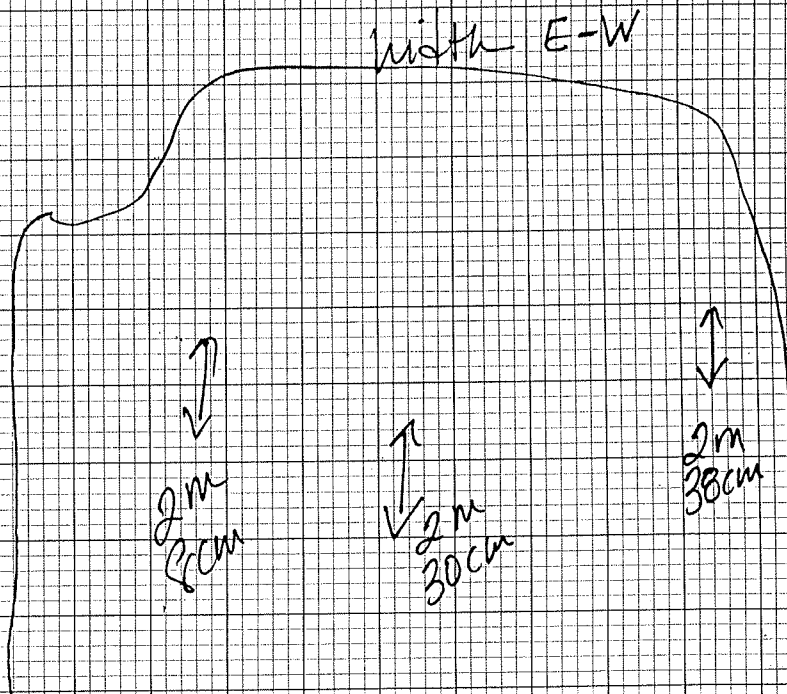
end of the cut, she began
 real. of debris. This
 effluent from the layer
 N. end and produced
 ceramics.

780 & 781



length N-S

2m 53cm
 2m 36cm
 2m 36cm



surface - the bedrock.
and we plan to
do measurements
starting tomorrow.

Paleobotanical Sample

526 Mapped Context 785

527 Mapped - Context 785

Special Finds # 0785

3512 Bronze Fixture (just broken; mapped)

3513 Worked Bone (handle?; in sieve)

3514 Bronze Coin

3517 Roman Camp Frag.

3518 Iron Link (mapped)

3519 Bronze Tack (mapped)

3520 Iron Object (mapped)

3521 Iron Object (mapped)

3522 Arch. Marble Fragment (mapped)

3523 Flint Sample (not mapped, in sieve)

3531 - Arch. Fragment - marble (mapped)

SAMPLE
PICTURES

THING

MAKE A SET
OF CONTEXTS
OF 785

785
Tile II

780
Tiles I

warm and dry - a
start of the day we
height in the cut
5 (its beginning). We
in the open layer
r, in 784 (now a
here the bedrock
and, eventually,
at the end of
ing 790).

780 - not terribly compact - so soft
not too much gravel
no seashells
mixture of ceramic and bone
very little tile
more small bones than large ones

785 - not very compact, but not too
lot of rocks, gravel
a lot of large pieces of iron
lot of nails; iron objects
like other layer 753
very little glass
more small bones than large
and a great many seashells.

We have taken at least 1 1/2
of soil out of this layer to

Budget: ~~1000~~ 11

Herculean effort, Dema
wed the enormous stone
barrier between layer
that it covers (this may
layer 785. Underneath
impact soil and very
used stones - very loosely
seems to be a gravel
lapped by this layer
around it continued.

unseen reading of
e in 768 is very dark
(not a lot of yellow)

Special Finds

#	Context	Mapped?	What
3535	790	Y	Bronze Pie
3536	788 788	Y	Bronze Obj
3539	790	Y	Bronze Obj
3541	790	Y	Flint
3542	785	Y	Arch. Paste
3545	0785	Y	Stone Mill
3546	0785	Y	Stone We
3547	0785	Y	Wetstone
3548	0785	Y	Iron Tack
3550	0785	Y	Bronze Obj
3551	0785	Y	Bronze Co
3552	0785	Y	Grinding Stone Case medic

context 708, Dumica
ch (slowly, because
in context layer 705.
point, enters the
728 that has not
bedrock. The soil across
consistent in its color
medium brown with a
is. This is obviously
fill that we have
the and it looks like
meters now, still,
meeting bedrock.

Layer 790

Not much activity in 790 - a nice clean profile is being followed. Emily has found a few pieces of (sm) bronze, some iron slag, a little bit of pottery and seashells. This layer is not (yet) producing many finds.

NOTE - Unlike layers 780 + 781, 790 covers the entire exposed area of cut 729.

Emily Munselled it: 2.54 4/3

As Emily continued to take out layer 790 she began finding soil beneath it that was more clay-like and light in color. Because this material is very compact,

loosey.
so the rock was dry and
in so we started by
the excess.

ended by cleaning more
by layer.

continued by cleaning
at the wall to Room 31.
close Context 790, take
to clean the bedrock

she had cleared a
and cleared the
way.

at the next area of
finished her work in 729

Special Finds:

3556	0785	Bronze Object	N
3500	0785	2 pieces of flint slabs	Y
3562	0785	Marble piece	Y
3503	0785	Marble piece	Y
3570	0785	Marble	Y
3573	0785	Bronze Object	Y
3578	0785	Bronze Object	Y
3579	0785	Bronze Object	Y
3580	0785	Bronze Object	Y
3581	0785	Bronze Coin	Y
3586	0785	Bronze Coin	N
3584	0785	Bronze Object	N
3585	0785	Bronze Coin	N

Elevations and a drawing.

In lounge 785 will continue with the new

on 4 July because of
was reported to me
the trench participants:
190 in cut 729 - at the
and 'shau began work
corner of the Room.

ed in layer 785 in cut 728.
the same material, and

notes, 3 tile buckets was

was not closed
(perhaps also ~~800~~ 780)
in two times that
"

Special Finds

555	06070	Old coal Sample
3621	0785	Bronze Coin (MS)
3623	0785	Bronze coin (MS)
3628	06070	Iron Object
3633	0785	Acc. 11. 1724G, A
3634	0785	BRONZE PIECES (IN)
3638	0785	Bronze Pin
3626	06070	Grindstone (2)
3629	0785	Bronze Object
3631	0785	Bronze Object
3632	0785	Bronze Object
3637	0785	Bronze coin

uckets: 111
col: 10YR 4/1

in 785. The soil was getting
very damp and, eventually,
in context we began to
begin emerge. Perhaps
indeed pediment - we
this layer throughout
is revealed, in this
layer, a group of very large
not seem to be any

ing to the arrangement but,
I clean around them more
pictures before we

#0606

Tile Buckets: 0
Munsell: 10YR 4/2

Emilly and I have kept working in Ust. The soil is very compacted and dry. It is to be seen if this is a characteristic of a lack of trampling - in the Byzantine period the excavators last summer, or the first summer. The soil is brown when first used but dries so quickly in our sun and returns a gray color. The soil is so compacted that it requires great effort to move - we are using pick axes.

At this point, we are trying to establish where the boundaries of this layer are - where it

Today.

Buckets: 1/1

Today, I guess, because the
NW corner of Layer 785
constitutes the next
EDROCK.

continued there to clear
also of 785 left. There
large stones that
lifted when the other
d and are was found to be
segment. It looks like either
to sculpt a column base
column base. It was given a
er and will be taken to the

the stones in situ and continued

SE part of Room 28

Context 608.

The Buckets: 1

In the morning, Adam came over to look
this context and helped Emily to find
the next layer. We have found it - a
puffy, soft area. She will continue
to clear in that area while I shall
take care of the section opposite Italio's
pit (607?).

We continued to find many mottled red stones
in the N corner of 608 but ^{no more} a layer
specific deposit was clear.

In the new layer that is emerging, we can
see a great deal of metal/metal impurities
deposits. Chris, the metallurgist, came to inquire
It appeared to him that the layer we are
uncovering is mostly charcoal but,
as seen in the profile of Italio's pit, the

Cont. #

Description

785

Bronze Piece

785

Bronze Coin

785

Grindstone

785

Iron Object

785

Bronze Object

606

Bronze Object

785

IRON OBJECT

785

ARCH. FRAGMENT

785

BRONZENAIL

#810

st in part - by Emily, for
before end of work day.

Special Finds:

Special Find #	Context #	Des. Photos of
3658	0785	Bronze pieces
3659	0785	Bronze pieces
3663	0785	Iron object
3664	0785	Bronze piece
3671	0819	Marble fragment
3672	0819	Bronze piece
3673	0819	Marble fragment
3674	0819	Bronze piece
Samples -	3675 0819	Ceramic stopper

in 810 -

- 570 - ~~Charcoal~~ Paleobotanical
- 571 - Metallurgic - light yellow
- 572 - Metallurgic - light yellow
- 573 - Metallurgic - darker yellow orange

Photomodelling was done for this context

in 821
 in 821
 in 821

7/10

worked to clear the profile
edge to ~~see~~ ascertain where
we need to continue
N. edge of 600. At
new layer B10 should
be a hard clay
surface also dips
other areas of this cut.

to look, with Chris, again
rise slightly against
center of the room (a feature
sketch). This area was photo-
graphical, one pale, photographed,
indicated at 1000.

Layer #785

This context is quickly coming to an end - we are reaching a layer of flat stones and some bedrock that is creating a paving/unhabitation level. * ^{This layer was cleared away.} We are now working in Context 819.

Above it, in the walls of the bedrock cut, it is now possible to see some ledges that might have supported an elevated wooden floor.

In the N section of the cut, as Adam was removing stones from a soft area next to the stone beneath layer 808 - he found that all of the loose stones he was removing had charred, or burnt, marks on their underside. A photo was taken of a few

table in this corner

728, we have the
open cut. at the
the bedrock and large
stones. Some areas of
been cleared all the
there still have some
et) soil on it. (These
next to, or, rather, between
was a hole, from
red the discolored stones
we have reached the

826 and will be treated separately and
are able to return to work.

9
- ~~0820~~ 0821

819, 820, 821, 827, 824, 606,

Volled Bme (in Seive)

It rained overnight, it's sprinkling in the morning and light rain threatens.

Because of the water, we have abandoned work on Cut 728 - the layers below are not that wet but the rain has saturated our bedrock borders and, thus, our way in and out.

So, Dima and John were sent to help Sasha in Room 31a, and to help empty buckets when needed.

Emily and Istvan worked in the N end of the room in context numbers 0600, 0810, 10827.

The remains of 6000 in the N corner were easy enough to identify and remove ~~at~~ but its stratigraphic reliability on the other side of pit 101 is less clear. Istvan seems to have found the next layer (Context 827) under

is cleared away, Adam;

of 810 from the N corner
slightly below the yellow,
in orange surface
is consistent layer
of magnetic byproduct (?).

asily, as the material
is very distinct. This
Context 831, was drawn
Wilson and photographed.
Under this Context and
a metallurgical and

* get Munsee description for Flint ✓ yellowish

- Photos taken of 827. We took also Geophotos - with 6 points and also a topographic surface (#9) with 25 spots.

* Monday morning is cool and wet. It rained on and on Sunday so all trenches are wet. We will again stay out of Cut 728 because of the water and attempt to make more progress in the N. part of the room. Ishan has been sent to work with the GIS team and John is not here - Emily, Dim and I will be excavating today.

Special Finds.

3691

0827

Bronze Piece

586, 587, 588, 589

0827

Paleobotanical Saw

3703

0827

Bronze ring

ing context # 827, we noticed
in debris a great deal
especially. It is rather
th side of the large
side of the pit (not) going
and to see, especially with
lots of iron and Emily

point that this side of the
with the same style and
it is cut 728 - some small
but, primarily, large
one a local trash heap
next 827, or at least
is the only true surface
of fills.

after only a couple of hours of work, we had an
hour-long rain delay. When we started work
again, with Dima working very quickly with
a pick-axe, the rain started again. Perhaps
we will be luckier tomorrow.

former win?)

827

g.)
ment

827

827

tion of room

soil in SW corner of NW

room 38

between bedroom and cut 601

Contact 827.

Because of continued rain, we are still concentrating our efforts on the N end of Room 38, in contact 827.

Emily and Dima are digging on opposite sides of the pit 607, and Ishaq is empty buckets and sorting fluids.

Emily has noticed some inconsistencies in color in the layer on her side (N) though the material/soil itself is of the same general texture (the color is a little bit more orange and clay-like). She has also noted a great increase in the amount

early well construction
(piece of bedrock) and
may ~~cover~~ be covered by

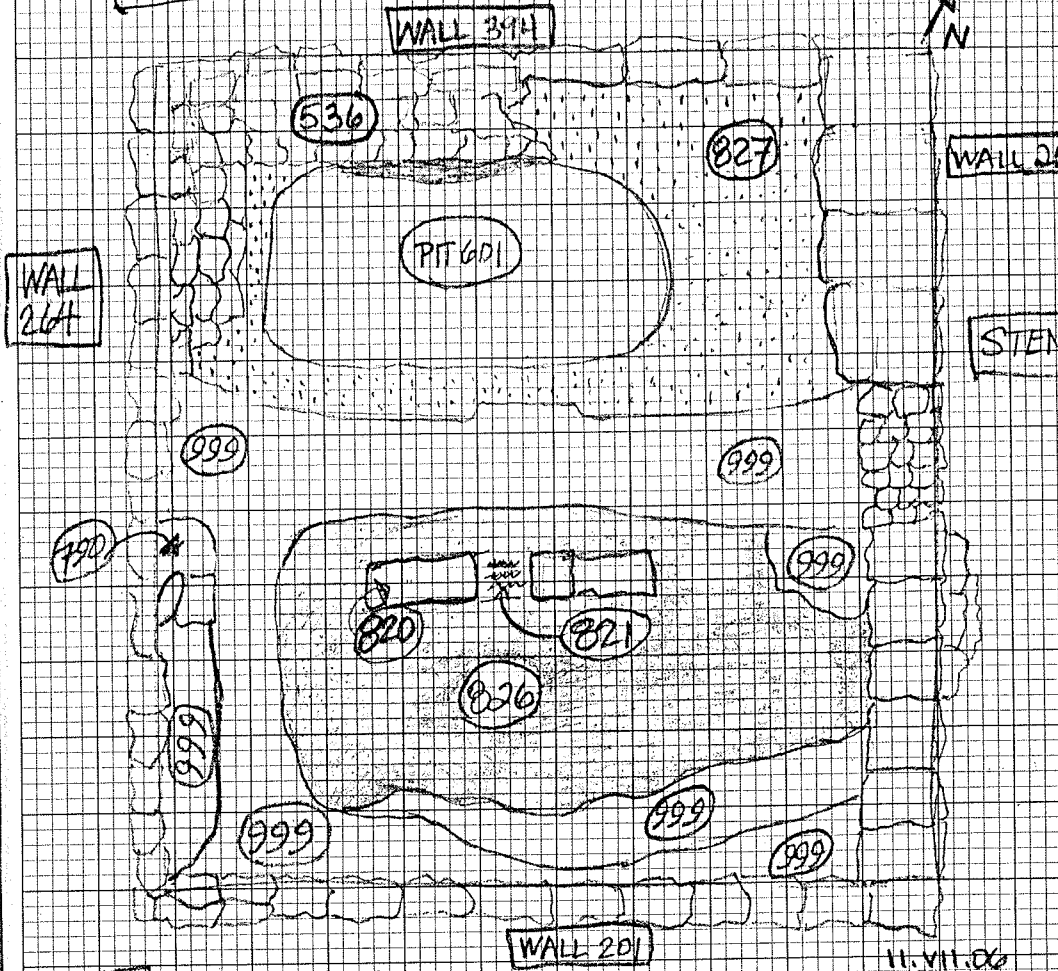
clear off layer 827 with
a more gray surface
easily assigned a

large amount of debris and
it finding lots of shells.
(my other layer). There is far
all in this side of the room -
S. part of the room. Also,
large rocks - there are some
one, by and large, hand-

in area - in three different
to make the variety of this

Context 827

IMPRESSIONISTIC RENDERING OF ROOM 208



11.VII.06

remained clear and dry
excavation day. We
ment in the N side of the
uncovered three separate
of Pit 601 - the previously
and gray oolite, and now
type) floor level below.
ch is larger, is still above
he has cleared away
is another layer - not
827 but not extremely.
in that it might be
lightly more compact
on top (827) but we
with this material
for discussion with

Morning is dry and clear -

We began the morning by taking a photograph of the N section of the room and the 4 open contexts therein - 838, 839, 840, 847.

Dima began by taking the ashy layer (#839) down along the bedrock cut in the S. section of this pit. It was sampled for Galena.

There were quite a lot of smaller bones in this soil but we were not sieving any more. Dima found that our layer 840, that fills the NE section of the trench, also carries under the ashy layer (#839).

Emily removed the yellow patch (#838) in the SW corner of the area. Under it, she found some darker, more brown soil

ring the layer 840 but we
clear out our detritus in

soon, Adam and Dima went
the cut 728. The clay layer
sily, likely because it
and yielded very little
of the clay was fairly
with inclusions of darker
material (this was
determine because the
dry wet.)

of some roof tiles that
around the drain, as

Special Finds / Paleobotanical Samples

600	Paleobot. Sample	# 0839	Map
3739	Bronze Coin	# 0839	Map
3742	Bronze coin	# 0839 ⁸³⁹	Map
3745	Ceramic weight	# 0839	map
3756	Marble architectural fragment	# 668	
3759	bronze object	668	
634	Metallurgical sample	668	
3752	Context? -		

putrid animal feces, or something & allyson was brought in to draw the drain (?) area on the site plan.

On the N side of the room, Emily and c

less than that because
very consistent ~~above~~
material as we
theless, Emily and I
it as much as we
as contamination,
below a stone -
in the semi-foundation
airway 536. At the
was a nice, large piece
aps a cornice at
was taken as an
ple and labeled with
lo's last layer in

We also came across an interesting bronze object that seems to be some sort of weight in 668. We will determine tomorrow whether to start a new layer at this point (i.e. this is really the bottom of the pit as Utao believed) or to continue with 668.

After taking many elevations, we started back with 840 before the end of the day. This layer is yielding a lot of fairly large, well-formed pieces of pottery of both Roman and Byzantine date. Just before the end of work, Dima found the bottom of a Hellenistic amphora that has some organic-looking material at the base of it. We took this as a sample

Contact 826

3777 Bronze piece

1st section of BH

1st section of BH

1st section of BH

1st section of BH

1st section

Morning was humid and mild.
We started work immediately with context 340.
Last night, I checked with Flint the
elevations of context 608 - the last context
 dug in the Pit 601 against elevations that
we took there yesterday. We (certainly) are
between 4-8 centimeters below the last
levels last year. When we begin back in
this area we will assign a new context
number to this - (not 608) ~~608~~. There
is some doubt in my mind about the
stratigraphic reliability of this layer, though,
because the surface looks much different
than the photographs from last year. In the
photos, there appears to be a trench-like
cavity in the E side of 608 (along the cut)

they are continuing to take
at the present moment,
the pit are about as
old be - there are
to follow logically
low context (838) was
strated from localized
was also localized,
any over to the E
e context that Dima
being on, seems to
a fee layer -
re Roman material
is to be localized

(see p. 108)

Adam again went into cut 72B to investigate the drain area. He pulled off what was left of the clay layer to find another layer of much darker brown soil, very compact, in the NE corner. ~~This~~ This was given a new context number, # 857. This appears to extend around (in a small section) the slabs and open part of the drain.

* On the E wall of the cut, Adam found a large cavity cut into the bedrock under the wall 257. At this point, it is deep enough for him to reach his entire arm in without trucking ^(into the wall) the back. The cut was numbered 864 and the 1st of it 863. 863 is generally the same

Contact 826

3777 Bronze piece

impact dark brown soil

alt of SE cut 723

soil in cut 841

bedrock in NE part

cut 723

Morning was humid and mild.

We started work immediately with context B40.

Last night, I checked with Flint the elevations of context 668 - the last context dug in the Pit 601 against elevations that we took there yesterday. We (currently) are

between 4-8 centimeters below the last levels last year. When we begin back in

this area we will assign a new context number to this - (not 668) ~~668~~. There

is some doubt in my mind about the stratigraphic reliability of this layer, though,

because the surface looks much different than the photographs from last year. In the

photos, there appears to be a trench-like cavity in the E side of 668 (along the cut)

Some (unclear) cavities

ly are continuing to take
the present moment,
the pit are about as
ld be - there are

to follow logically
low context (838) was
dated from localized
was also localized,
my over to the E

context that Dima
king on, seems to

a fee layer -
as Roman material

to be localized

(see p. 68)

Adam again went into cut 728 to investigate the drain area. He pulled off what was left of the clay layer to find another layer of much darker brown soil, very compact, in the NE corner. ~~It~~ This was given a new context number, # 857. This appears to extend around (in a small section) the slabs and open part of the drain.

* On the E wall of the cut, Adam found a large cavity cut into the bedrock under the wall 257. At this point, it is deep enough for him to reach his entire arm in without touching the back. ^(into the wall) The cut was numbered 864 and the fill is 863. 863 is generally the same

201 - catalog #1757

terra cotta sculpture
object

ry of the layer

~~Day began with a cloudy.~~

Although the day started out wet from rains yesterday, the sky cleared and we had a dry, sunny day.

After some drying time, I was able to get into cut 728 to clear out context 857 from the bottom. There was very little material in this small patch of soil, and I put all of it (save for the small pieces of bone and ceramic that I removed) into paleobotanical sample 637. With this, I believe that all exposed areas of the floor have reached bedrock. Maybe tomorrow, weather permitting, we will be able to remove the

have both
m and think
tu, but not
wish?).

learned and
epation of the

Dima and Emily
on to the level
2 was very
a terms of the
ity ~~was~~ of
t. However, when

determined that pit 601 had, indeed, not
reached its bottom last season, as (I also
had hoped) suggested. So, for the time
we are going to work back at the pit
(whose borders are easily seen - and
the new layer numbered 868), after
photographing the room.

beneath
in SE part

785
BRANZO
DEE FROM PROFILE
2'10" bedrock

alco pot #650 =
Context 821

Wells of 821 taken in
wheel barrel to Galena
r of pit 601, NW part

is (820) in SE part

in bedrock in

of stones and tiles

The morning was cool, overcast and dry.
We wasted no time in getting into cut 728. Dima and Emily removed the large stones (#820) from eastern side of the hole. Underneath the stones have black marks from bacterial growth at the water table. There was also a clay layer under these stones - Context 871. This layer was about 2-5 cm thick and was clay orange and had only a little bit of debris in it (ceramic, some vitrified glass, seashell and bone). At the bottom of this clay material were stone slabs - one was marble, but all three were rather large and regularly-cut in terms of their length. 1 marble, 1 marble, 1 marble.

entirely, in mud.

into the room to

moved, the shape of
it became clear.

(like avocado?) -

and, and narrow
been called

mud was cleared
that could have been

that there is a
stones and tiles in
specimens to be the

Dima found in the well last summer.

The material at the bottom of cut 874 had the odor of standing water - slightly unpleasant but nothing specifically identifiable.

This feature, along with the rest of cut 728, was cleaned and photographed. This should be the final photograph of the entire cut. Allyson has been asked to come draw this feature into the plan.

In the N side of the room, we began by trying to identify the limits of pit 607 - layer 868. When we tried to follow the cut line around the room, we realized that this pit was actually not still intact all around. We

with a brief sprinkle, we
of reasonably dry

we began the day by
entire surface, taking
of pit 601 and then
of 847, the section of

with the new layer, 879, that is on the opposite side of the old pit. For the moment, Dima is working down 879 around the room (including the pit, which is now in sync with the rest of the area around it). This layer is producing the typical fill material from the previous layers - a lot of pottery, seashells, bones, and pieces of plaster. There were a few small metal finds - the bell was a nice piece - but not the abundance of nails that we had in cut 728.

On the S. side of the room, we moved ahead perhaps a little too quickly. While I was

used of a circular
and tiles. We
shed for
as the very few
we found in
filled the pit).

photograph of the
and delusion
d we took spot
should complete
section of the

obvious and immediate

in and out of cut 728 these were kept. (One
removed, the section of bedrock that re
N-S there will be reduced to just a sliver
and would be unsafe to walk on
repeatedly.)

The morning was clear, cool and dry. It had rained a little overnight but the day was warm and dry.

The focus of our work today was to continue to carefully remove the soil and material from the N part of cut 729 (now 901), and to make significant progress in removing the fill layer of the N side of the room. In the N part of cut 729 (now #901), Emily continued to take out the soil that is frustratingly packed into this small area. She has found two different layers: 890, which is the fill layer that lay beneath (and next to, just N of them) the two stones, and 895, a surface layer that

...ensuring that the cut

(above cut 900), we
much dirt as possible.

...less than a week

to get the fill layers

...determine if
layers beneath, and

bedrock cut. Adam

...the work at

...and we managed

...layer 879. This

...is, especially large

...so found some

T

(

c

c

k

c

c

c

x

-

c

.

i

c

The morning was warm and sunny.

Again, we started immediately with the open contexts in order to try to get this room completely excavated by the end of season. Yma joined Adam and Dima in cut 900 and continued to work on context 879, a fill layer rich with seashells, pottery fragments (from all periods, apparently, as we found both 10th century and Hellenistic material). Though, by and large, this material seems to be trending earlier than the material that we found across the room in cut 728. The material of 879 continues to be heavy

in the bedrock

ork, Adam began to

al in the central

a of the cut was

ike and delineated

similar. So, we

side of the cut

day in order to

and to see where its

and in breadth - were.

though, we had

the area that Adam

ea went to it call

...

879, though, continues in the central and eastern side of cut 900 and appears to finally be showing a new layer beneath. This new layer looks like it might be similar to the new context 906 because it is yellowish and clay-like. I expect a large crew tomorrow morning in order to make some significant progress as we only have the morning to work because of the Pachard lab's grand opening celebration.

On the SW side of the room, Emily heroically continued work on the remains of the material in the N part of cut 901. She began

southern half of
were taken away
all taken at this
bottom" in order
moved to the spot
the lower half of
pending in the
either stay with
text number in the

sk. of drawing the
11 - that which is
w. of stairs [wall 536.

Special finds!

Contact 895

3886 Marble arch. fragment

3892 Bronze object

Contact 879

3891 Ceramic amphora handle w/stamp

3895 Bronze object

3899 Lion object

3900 Worked bone

3903 Bronze coin

3905 Stone object / tool

3906 Bronze object

3907 Ceramic amphora handle w/stamp

3908 Lion object

3901 Lion object

3901 Lion

\$ 900

with charcoal? Use

of ~~200~~ cut 900

y with me going to the
to make progress in the

s of the day. I was

away from Emily's

the space is VERY

ed away two buckets

a few pieces of

Call three contexts: 906, 908, 910 and get it ready for photos and a photomodel when the crew arrived at 6:30. What I found was that there is another ~~layer~~ cut inside of cut 900: just about at the center, running (basically) north-south. This cut forms the border between 906 and was remained of 879 (which is now 910 and seems to maybe have been a use surface).

Once the pictures were taken, Boldana gave me context numbers for both the cut and the new layer adjacent to it.

Once the guys arrived, Anton, Pima and Yura went about clearing about 10cm of dirt from

the surface. In the process we were able to

Initially threw three buckets
removing the material
to the intact base of a
ros. (the type with
ing vertically).

use of the visitors but we
e same place, with
ning.

progress in cut 907 - it
s hit the clay layer
ly just above the
get back in the room
ll sweep up the

Special finds:

Context 879

3923 Bronze object

Context 910

3924 Bronze object

3925 Iron object

Lampus:

Context 910

718 Paleobotanical

720 Metallurgical

because of the late
lab opening and
). We began work

ly in 790, taking the
were almost no
ed. We took spot
graphs at the end.

in concern is the
at in cut 900.

Zasha and Yua
e material here is

and charcoal inclusions in what is now
the lower half of cut 900 (on the E side).
This was numbered 910 and we took
spot heights and a photograph. This
lump, 910, is on the eastern side of the
room and is much lower than the
material, numbered 906 and 908, in
the upper part of the room. It seems to
also be a full but, because of its
compactness, we took two paleobotanical
samples (718 and 720)

Special Finds

908: 3951 non object

921: 3958 non object

#921

2.54 4/2 "dark grayish
brown"

#908

2.54 5/2 "grayish brown"

Samples

722 - #906

723 - #906

724 - #921

Tile buckets:

① for 906

①/2 for 910

① for 921

the Adam and his pickaxe

section of soil along the
lines that, after removing
ing at the section on
ual was actually
material and

d through the cut
m of vertical material,
called 906. This
e hole with debris

atches of clay, the
ough it was compact

Contexts (908, 921, 910).

After taking out all of 908, Adam found that there was another surface below it, just above the bedrock. This layer is contemporaneous, and thus treated as the same, as a vertical area of soil against the N wall. Here, too, Adam thinks that this vertical surface continued more eastward but was removed as part of 910.

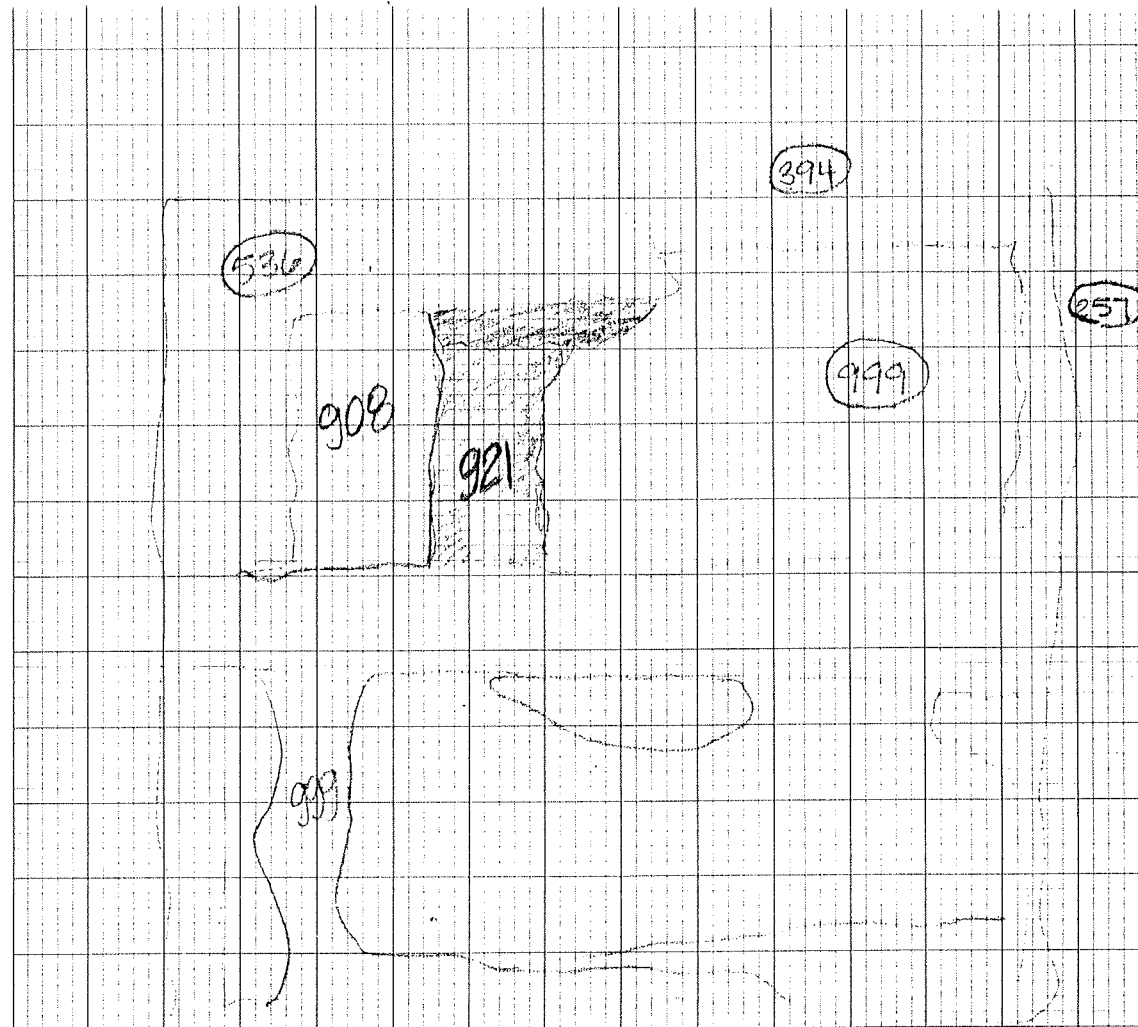
The ceramic analysis should bear this out. These areas were photographed and drawn into the plan by Allyson.

In the eastern most part of the room, we cleaned, photographed and photo-modeled the context 908. 908 was likely a use surface so we also took more profiles and took stratigraphical samples.

is we are finished
time...

we cut 900 in a
two levels - one
hallow. hatched
the E side of the
house held a
in, this area

perhaps the lower
for cold storage.



Upper section of 921 - vertical ridge

22 VII.06
Before final