

***Salix ovalifolia* Trautv. var.
*ovalifolia***

(Oval Leaf Willow)

&

***Salix ovalifolia* Trautv. var.
*arctolitoralis***

(Arctic Seashore Willow)

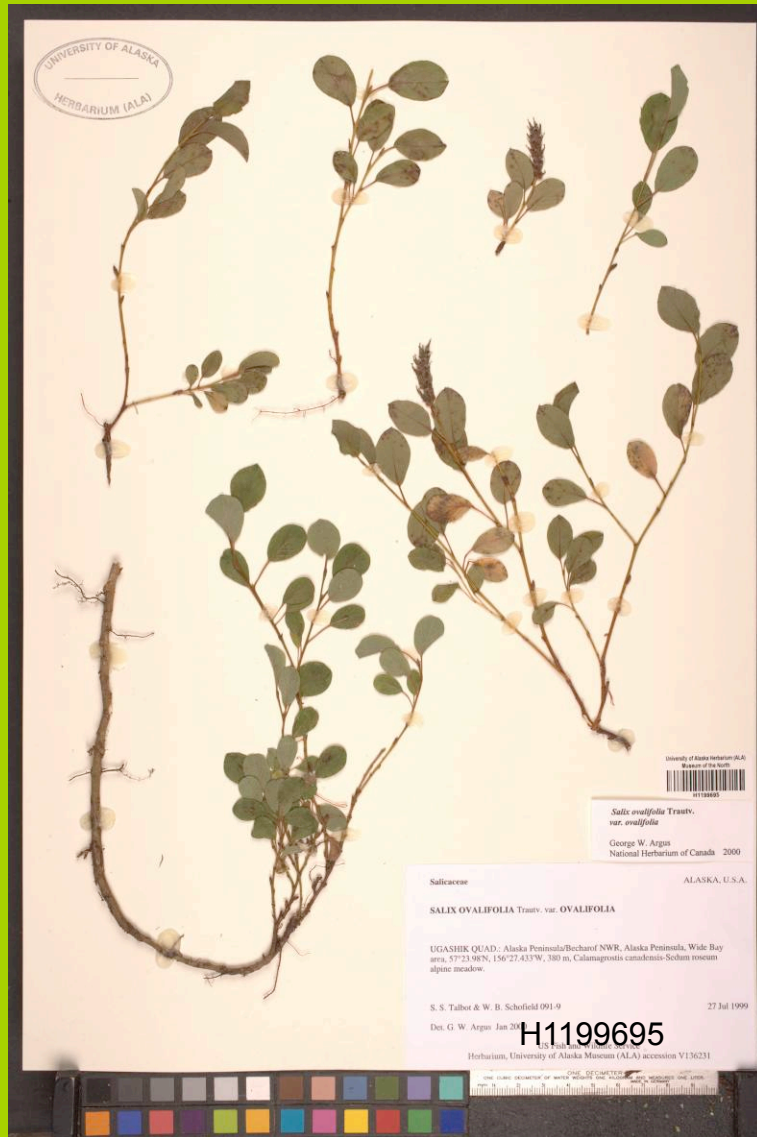
Rebecca Zulueta

Systematic Botany

23 April 2009



Salix ovalifolia Trautv. var. ovalifolia



Salix ovalifolia Trautv. var. arctolitoralis

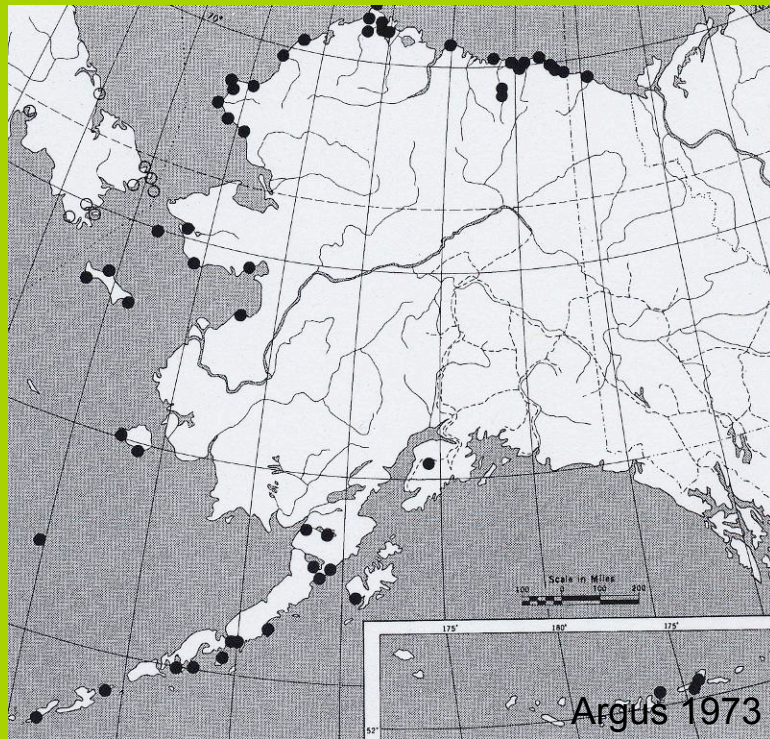


Habitat

- Tundra
- Coastal Beaches
- Saline meadows
- Never far from sea
- Dwarf shrub
- Trailing habit

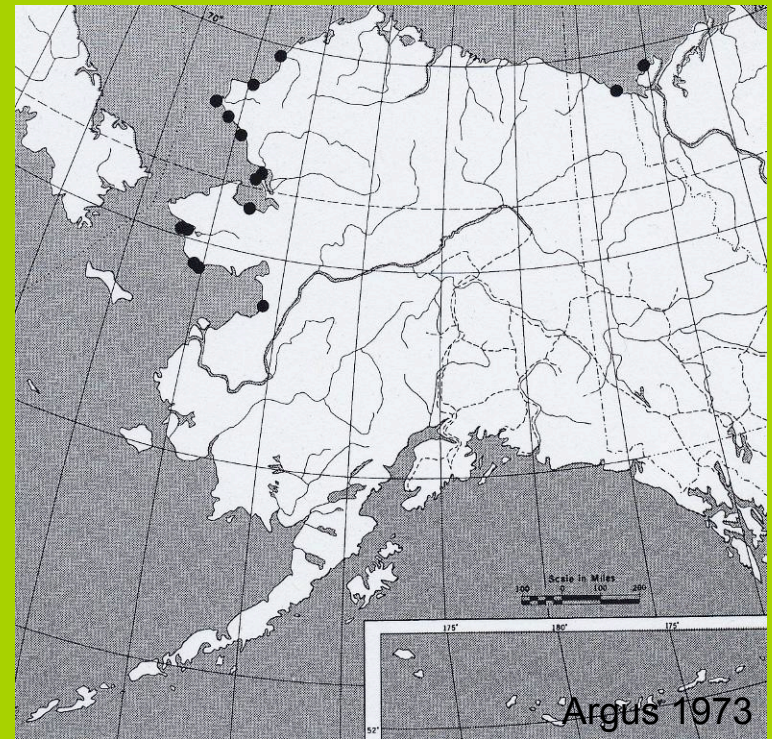
Location

Salix ovalifolia* Trautv. var. *ovalifolia



Arctic: Firth River, Yukon Territory; westward along the coast to Alaska Peninsula; Kodiak Island; Aleutian Islands

Salix ovalifolia* Trautv. var. *arctolitoralis



Arctic: Northeastern Alaskan coast; Unalakleet to Point Lay; northern Yukon; Mackenzie Delta

Location

***Salix ovalifolia* Trautv.
var. *ovalifolia***

Green

***Salix ovalifolia* Trautv.
var. *arctolitoralis***

Orange



Google Earth 2009

Salicaceae

Willow Family

- Shrubs, trees
- Dioecious
- Inflorescence
spicate or
racemose catkins
- Imperfect
- Calyx absent or
connate
- Corolla absent
- Stamens 2-many
- Carpels 2-4
connate
- Superior ovary
- Fruit capsule,
comose seeds

Salicaceae

- Genera

- Species

- Interactive Identification of New World Salix using Intkey-
George W. Argus

- <http://aknhp.uaa.alaska.edu/willow/index.htm>

Identifying Difficulties

- Hybrids
- Developmental variability
- Phenotypic variability

Key to Species

1. Dwarf or prostrate, under 2dm tall
 1. Pistillate flowers one nectary; catkins on floriferous branchlets
 2. Pistils glabrous
 3. Leaves glaucous beneath
 4. Branchlets glabrous-pubescent; leaves thin, elliptic to subcircular; petioles 2-20mm long; bracts brown to blackish; pistils reddish, purplish or greenish
 5. Pistillate nectaries longer than or equal to the stipes; leaf margins usually entire; petioles usually 4-20mm long
 6. Leaves glossy above, base acute to rounded or subcordate
 7. Branches long, non-glaucous; styles 0.2-0.8 mm long

Salicaceae

9. Leaves obovate to narrowly elliptic

a. Leaves obovate, elliptic or broadly elliptic;
pistillate aments generally shorter;
pistils 2.5-4 mm long---

S. ovalifolia var. ovalifolia

b. Leaves narrowly elliptic, 2.5-4.6cm long;
pistillate aments 2.2-5 cm long;
pistils 5.2-9.6 mm long---

S. ovalifolia var. arctolitoralis

***Salix ovalifolia* Trautv.
var. *ovalifolia***

Leaves

***Salix ovalifolia* Trautv.
var. *arctolitoralis***



Leaves

***Salix ovalifolia* Trautv.
var. *ovalifolia***



1.3-2.8cm obovate
Broadly elliptic

***Salix ovalifolia* Trautv.
var. *arctolitoralis***



2.5-4.6cm oblanceolate
Narrowly elliptic

Pistils

***Salix ovalifolia* Trautv.
var. *ovalifolia***



Pistils 2.5-4.0 mm

***Salix ovalifolia* Trautv.
var. *arctolitoralis***



Pistils 5.2-9.6 mm

Pistillate Catkins

***Salix ovalifolia* Trautv.
var. *ovalifolia***



0.9-2.8 cm long catkins

***Salix ovalifolia* Trautv.
var. *arctolitoralis***



2.0-5.0 cm long catkins

Literature Cited

Argus, G. W. 1969. "New combinations in the Salix of Alaska and Yukon".
Can. J. Botany, 47:795-801.

Argus, G. W., 1973. "The Genus Salix in Alaska and the Yukon". *Can. National Museum of Natural Sciences. Botany*, 2:64-71.

Hultén, E., 1968. *Flora of Alaska and Neighboring Territories. A Manual of the Vascular Plants.* Stanford University Press. California. 343,346.

Viereck, L.A., Little, E.L. Jr., 1972. *Alaska Trees and Shrubs.* Forest Service United States Department of Agriculture. Washington, D.C., Agriculture Handbook No. 410.

Viereck, L.A., Little, E.L. Jr., 2007. *Alaska Trees and Shrubs.* 2nd Ed. University of Alaska Press. 127-128.

Special Thanks to Steffi Ickert-Bond and George W. Argus!