



DEED OF GIFT

OBJECTS AND DESCRIPTION

97 specimens, pinned insects, from KNLUR collection. See attached pages for detailed contents.

- I / We affirm that I/we own such objects, have obtained them through legal means, and to the best of my/our knowledge, this property has not been imported/exported contrary to the laws of this or the originating country.
- I / We affirm that I / We, to the best of my / our knowledge, have good and complete right, title, and interests (including all transferred copyright, trademark, and related interests*) to give.
- I / We, sole owners of the following listed and described property, do hereby give to the University of Alaska Museum of the North by way of gift, absolute and unconditional ownership of the property, together with all copyright, trademark, and related interests* in all media by any means or method now known or hereafter invented, listed above.

Credit Line (Change if Desired)

Matt Bowser
Donor's Name

Co-Donor's Name

Matt L Bowser
Donor's Signature

Co-Donor's Signature

27 - January - 2012
Date

Date

Kenai NWR PO Box 2139 Soldotna
Mailing Address City

AK 99669
State Zip Code

(907) 260-2812
Phone

Matt_Bowser@fws.gov
Email Address

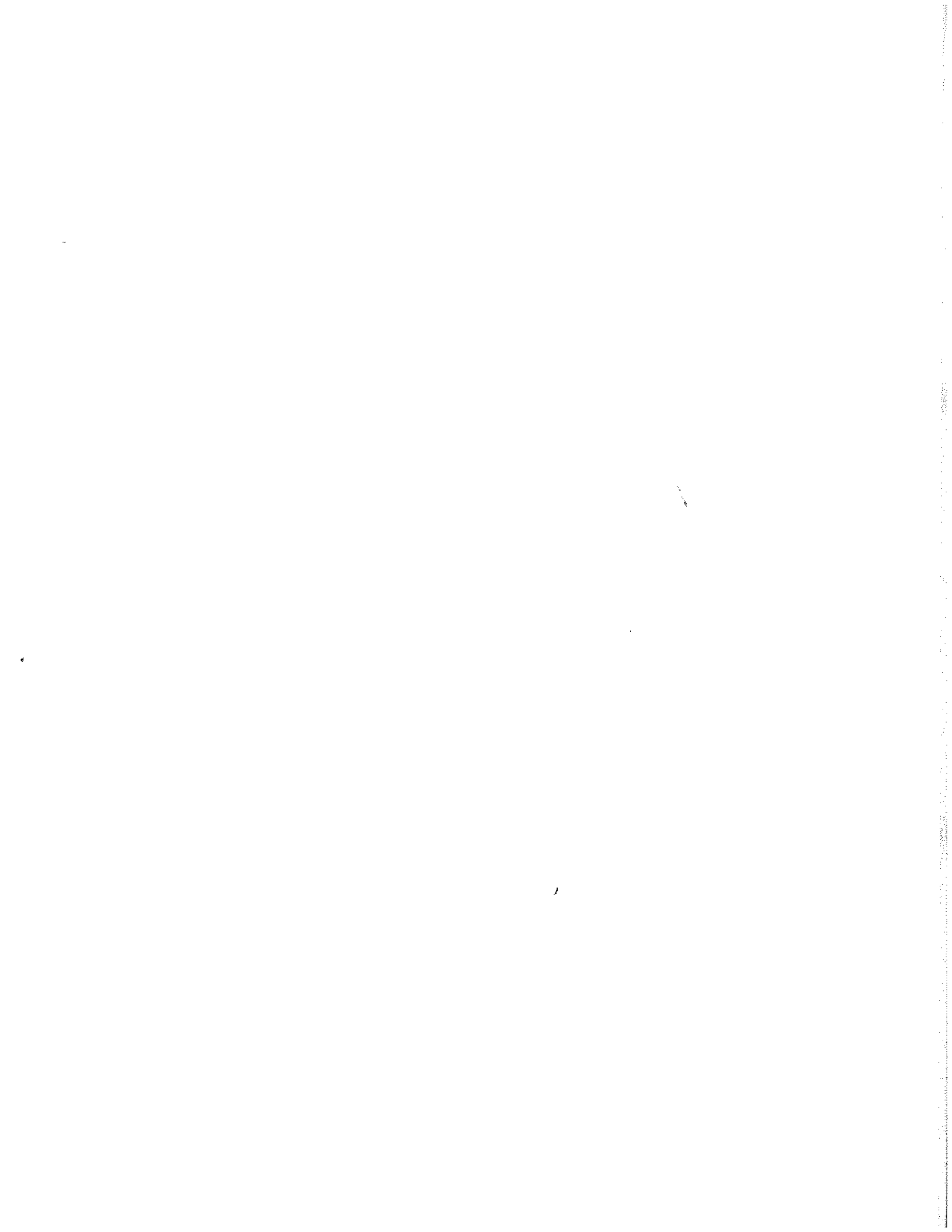
Department Head Signature Date

Museum Director Signature Date

Donations to the University of Alaska Museum are tax deductible to the extent allowed by law. The Museum does not appraise any donations. It is the responsibility of the donor to make arrangements for appraisals. Should the donor wish the Museum to sign the IRS documents regarding the gift, a copy of the appraisal with values must be filed with the Museum.

Exhibition of any object is entirely at the discretion of the Museum. Objects not on public display are generally available for study by scholars, researchers, and students.

*If less than all copyright, trademark, and related interests are given, specify above.





Edit Loan KNWR ENTO KNWR-2012.04-UAM-Ento Entered by Matt Bowser

Loan Number:

Agent Name	Add Row	Role <small>Define</small>	Delete?	CloneAs	Rank
Matt Bowser	<input type="checkbox"/>	authorized by	<input type="checkbox"/>		Rank
Matt Bowser	<input type="checkbox"/>	in-house contact	<input type="checkbox"/>		Rank
Derek S. Sikes	<input type="checkbox"/>	outside contact	<input type="checkbox"/>		Rank
Derek S. Sikes	<input type="checkbox"/>	received by	<input type="checkbox"/>		Rank

OK to print

Projects associated with this loan:

- None

Create a project from this loan

Pick a Project to associate with this loan

Project Agent Name

Project Agent Role

Project Title

Project Start Date

Project End Date

Project Description

Project Remark

Check to create project with save

Loan Type: Define

Loan Status: Define

Transaction Date:

Due Date:

Nature of Material (183 characters)

93 KNWR pinned insect specimens, mostly Coleoptera, to go to UAM for identification and deposition. Also included are four ant specimens given to me some time ago by André Francoeur.

Description (0 characters)

Instructions (0 characters)

Remarks (0 characters)

Save Edits Delete Loan Quit Add Items Add Items BY Barcode Review Items

Print...

Create a shipment...

Packed By Agent

Shipped Method

Shipment Type Define

Shipped To Address (may format funky until save)

Shipped From Address

Tracking Number

Ship Date

Package Weight (TEXT, include units)

Hazmat?





Review items in loan KNWR-2012.04-UAM-Ento .
There are 93 items from 93 specimens in this loan.
Download (csv)

Change disposition of all these items to:

View Part Locations or Print Freezer Locations

CN	Scientific Name	Item	Condition	Subsample?	Item Instructions	Item Remarks	Disposition	Encumbrance
KNWR ENTO 1711	<i>Leiodidae</i>	whole organism (pinned)	Condition not assessed. History	no			on loan	X
KNWR ENTO 1888	<i>Fannia spathiophora</i>	whole organism (pinned)	good History	no			on loan	X
KNWR ENTO 2038	<i>Cantharidae</i>	whole organism (pinned)	Condition not assessed. History	no			on loan	X
KNWR ENTO 2143	<i>Chlorops sahlbergii</i>	whole organism (pinned)	good History	no			on loan	X
KNWR ENTO 2199	<i>Cantharidae</i>	whole organism (pinned)	Condition not assessed. History	no			on loan	X
KNWR ENTO 2277	<i>Anobiidae</i>	whole organism (pinned)	Condition not assessed. History	no			on loan	X
KNWR ENTO 2409	<i>Cantharidae</i>	whole organism (pinned)	Condition not assessed. History	no			on loan	X
KNWR ENTO 2410	<i>Cantharidae</i>	whole organism (pinned)	Condition not assessed. History	no			on loan	X
KNWR ENTO 2411	<i>Cantharidae</i>	whole organism (pinned)	Condition not assessed. History	no			on loan	X
KNWR ENTO 2412	<i>Cantharidae</i>	whole organism (pinned)	Condition not assessed. History	no			on loan	X
KNWR ENTO 2413	<i>Cantharidae</i>	whole organism (pinned)	Condition not assessed. History	no			on loan	X
KNWR ENTO 2551	<i>Cantharidae</i>	whole organism (pinned)	Condition not assessed. History	no			on loan	X
KNWR ENTO 2611	<i>Cantharidae</i>	whole organism (pinned)	Condition not assessed. History	no			on loan	X
KNWR ENTO 2725	<i>Cantharidae</i>	whole organism (pinned)	Condition not assessed. History	no			on loan	X
KNWR ENTO 2726	<i>Cantharidae</i>	whole organism (pinned)	Condition not assessed. History	no			on loan	X
KNWR ENTO 2756	<i>Staphylinidae</i>	whole organism (pinned)	Condition not assessed. History	no			on loan	X
KNWR ENTO 2910	<i>Thaumatomyia trifasciata</i>	whole organism (pinned)	good History	no			on loan	X
KNWR ENTO 3079	<i>Psilopa girschneri</i>	whole organism (pinned)	good History	no			on loan	X
KNWR ENTO 3089	<i>Parydra parasocia</i>	whole organism (pinned)	good History	no			on loan	X
KNWR ENTO 3095	<i>Philotelma alaskense</i>	whole organism (pinned)	good History	no			on loan	X

KNWR ENTO 3142	<i>Lytogaster obscura</i>	whole organism (pinned)	good History	no			on loan		X
KNWR ENTO 3275	<i>Cantharidae</i>	whole organism (pinned)	Condition not assessed. History	no			on loan		X
KNWR ENTO 3276	<i>Cantharidae</i>	whole organism (pinned)	Condition not assessed. History	no			on loan		X
KNWR ENTO 3277	<i>Cantharidae</i>	whole organism (pinned)	Condition not assessed. History	no			on loan		X
KNWR ENTO 3283	<i>Suillia convergens</i>	whole organism (pinned)	good History	no			on loan		X
KNWR ENTO 3331	<i>Cantharidae</i>	whole organism (pinned)	Condition not assessed. History	no			on loan		X
KNWR ENTO 3332	<i>Cantharidae</i>	whole organism (pinned)	Condition not assessed. History	no			on loan		X
KNWR ENTO 3333	<i>Cantharidae</i>	whole organism (pinned)	Condition not assessed. History	no			on loan		X
KNWR ENTO 3335	<i>Cantharidae</i>	whole organism (pinned)	Condition not assessed. History	no			on loan		X
KNWR ENTO 3394	<i>Cantharidae</i>	whole organism (pinned)	Condition not assessed. History	no			on loan		X
KNWR ENTO 3450	<i>Cantharidae</i>	whole organism (pinned)	Condition not assessed. History	no			on loan		X
KNWR ENTO 3451	<i>Cantharidae</i>	whole organism (pinned)	Condition not assessed. History	no			on loan		X
KNWR ENTO 3496	<i>Cantharidae</i>	whole organism (pinned)	Condition not assessed. History	no			on loan		X
KNWR ENTO 3576	<i>Cantharidae</i>	whole organism (pinned)	Condition not assessed. History	no			on loan		X
KNWR ENTO 3692	<i>Cantharidae</i>	whole organism (pinned)	Condition not assessed. History	no			on loan		X
KNWR ENTO 3693	<i>Cantharidae</i>	whole organism (pinned)	Condition not assessed. History	no			on loan		X
KNWR ENTO 3694	<i>Cantharidae</i>	whole organism (pinned)	Condition not assessed. History	no			on loan		X
KNWR ENTO 3697	<i>Cantharidae</i>	whole organism (pinned)	Condition not assessed. History	no			on loan		X
KNWR ENTO 3736	<i>Pelecomalium testaceum</i>	whole organism (pinned)	Condition not assessed. History	no			on loan		X
KNWR ENTO 3855	<i>Cantharidae</i>	whole organism (pinned)	Condition not assessed. History	no			on loan		X
KNWR ENTO 3856	<i>Cantharidae</i>	whole organism (pinned)	Condition not assessed. History	no			on loan		X
KNWR ENTO 3857	<i>Cantharidae</i>	whole organism (pinned)	Condition not assessed. History	no			on loan		X
KNWR ENTO 3860	<i>Cantharidae</i>	whole organism (pinned)	Condition not assessed. History	no			on loan		X
KNWR ENTO 3861	<i>Cantharidae</i>	whole organism (pinned)	Condition not assessed. History	no			on loan		X
KNWR ENTO 3862	<i>Cantharidae</i>	whole organism (pinned)	Condition not assessed. History	no			on loan		X

KNWR ENTO 3933	<i>Cantharidae</i>	whole organism (pinned)	Condition not assessed. History	no			on loan		X
KNWR ENTO 4042	<i>Cantharidae</i>	whole organism (pinned)	Condition not assessed. History	no			on loan		X
KNWR ENTO 4043	<i>Cantharidae</i>	whole organism (pinned)	Condition not assessed. History	no			on loan		X
KNWR ENTO 4156	<i>Cantharidae</i>	whole organism (pinned)	Condition not assessed. History	no			on loan		X
KNWR ENTO 4208	<i>Pelecomalium testaceum</i>	whole organism (pinned)	Condition not assessed. History	no			on loan		X
KNWR ENTO 4209	<i>Pelecomalium testaceum</i>	whole organism (pinned)	Condition not assessed. History	no			on loan		X
KNWR ENTO 4337	<i>Cantharidae</i>	whole organism (pinned)	Condition not assessed. History	no			on loan		X
KNWR ENTO 4378	<i>Cantharidae</i>	whole organism (pinned)	Condition not assessed. History	no			on loan		X
KNWR ENTO 4379	<i>Cantharidae</i>	whole organism (pinned)	Condition not assessed. History	no			on loan		X
KNWR ENTO 4553	<i>Staphylinidae</i>	whole organism (pinned)	Condition not assessed. History	no			on loan		X
KNWR ENTO 4893	<i>Cantharidae</i>	whole organism (pinned)	Condition not assessed. History	no			on loan		X
KNWR ENTO 5185	<i>Cyphon variabilis</i>	whole organism (pinned)	Condition not assessed. History	no			on loan		X
KNWR ENTO 5326	<i>Cantharidae</i>	whole organism (pinned)	Condition not assessed. History	no			on loan		X
KNWR ENTO 5343	<i>Cantharidae</i>	whole organism (pinned)	Condition not assessed. History	no			on loan		X
KNWR ENTO 5344	<i>Cantharidae</i>	whole organism (pinned)	Condition not assessed. History	no			on loan		X
KNWR ENTO 5509	<i>Cantharidae</i>	whole organism (pinned)	Condition not assessed. History	no			on loan		X
KNWR ENTO 5660	<i>Cantharidae</i>	whole organism (pinned)	Condition not assessed. History	no			on loan		X
KNWR ENTO 5661	<i>Cantharidae</i>	whole organism (pinned)	Condition not assessed. History	no			on loan		X
KNWR ENTO 5937	<i>Cantharidae</i>	whole organism (pinned)	Condition not assessed. History	no			on loan		X
KNWR ENTO 6351	<i>Acidota quadrata ?</i>	whole organism (vial)	Condition not assessed. History	no			on loan		X
KNWR ENTO 6375	<i>Podabrus tetragonoderus ?</i>	whole organism (pinned)	Condition not assessed. History	no			on loan		X
KNWR ENTO 6415	<i>Notiophilus aquaticus</i>	whole organism (pinned)	Condition not assessed. History	no			on loan		X
KNWR ENTO 6749	<i>Staphylinidae</i>	whole organism (pinned)	Condition not assessed. History	no			on loan		X
KNWR ENTO 6779	<i>Protophormia terraenovae</i>	whole organism (pinned)	good History	no			on loan		X
KNWR ENTO	<i>Hesperinus brevifrons</i>	whole organism	good History	no			on loan		X

6781		(pinned)							
KNWR ENTO 7003	<i>Cymbiodyta</i>	whole organism (pinned)	good History	no				on loan	X
KNWR ENTO 7104	<i>Carabidae</i>	whole organism (pinned)	good History	no				on loan	X
KNWR ENTO 7106	<i>Carabidae</i>	whole organism (pinned)	good History	no				on loan	X
KNWR ENTO 7377	<i>Cantharidae</i>	whole organism (pinned)	good History	no				on loan	X
KNWR ENTO 7668	<i>Carabidae</i>	whole organism (pinned)	good History	no				on loan	X
KNWR ENTO 7669	<i>Carabidae</i>	whole organism (pinned)	good History	no				on loan	X
KNWR ENTO 7670	<i>Carabidae</i>	whole organism (pinned)	good History	no				on loan	X
KNWR ENTO 7671	<i>Carabidae</i>	whole organism (pinned)	good History	no				on loan	X
KNWR ENTO 7672	<i>Carabidae</i>	whole organism (pinned)	good History	no				on loan	X
KNWR ENTO 7673	<i>Staphylinidae</i>	whole organism (pinned)	good History	no				on loan	X
KNWR ENTO 7674	<i>Carabidae</i>	whole organism (pinned)	good History	no				on loan	X
KNWR ENTO 7675	<i>Carabidae</i>	whole organism (pinned)	good History	no				on loan	X
KNWR ENTO 7676	<i>Carabidae</i>	whole organism (pinned)	good History	no				on loan	X
KNWR ENTO 7677	<i>Carabidae</i>	whole organism (pinned)	good History	no				on loan	X
KNWR ENTO 7678	<i>Carabidae</i>	whole organism (pinned)	good History	no				on loan	X
KNWR ENTO 7679	<i>Carabidae</i>	whole organism (pinned)	good History	no				on loan	X
KNWR ENTO 7680	<i>Carabidae</i>	whole organism (pinned)	good History	no				on loan	X
KNWR ENTO 7697	<i>Carabidae</i>	whole organism (pinned)	good History	no				on loan	X
KNWR ENTO 7698	<i>Elateridae</i>	whole organism (pinned)	good History	no				on loan	X
KNWR ENTO 7699	<i>Staphylinidae</i>	whole organism (pinned)	good History	no				on loan	X
KNWR ENTO 7700	<i>Staphylinidae</i>	whole organism (pinned)	good History	no				on loan	X
KNWR ENTO 7806	<i>Tenebrionidae</i>	whole organism (pinned)	good History	no				on loan	X
KNWR ENTO 7807	<i>Glischrochilus vittatus</i>	whole organism (pinned)	good History	no				on loan	X

Back to Edit Loan



- Data Providers
- Report a bug or request support

