

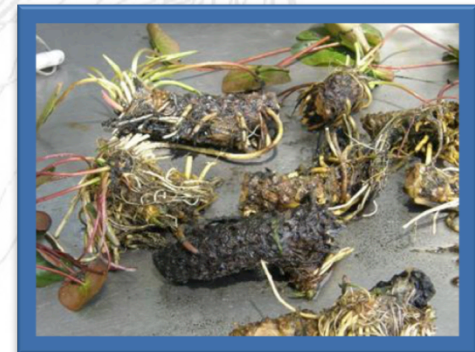
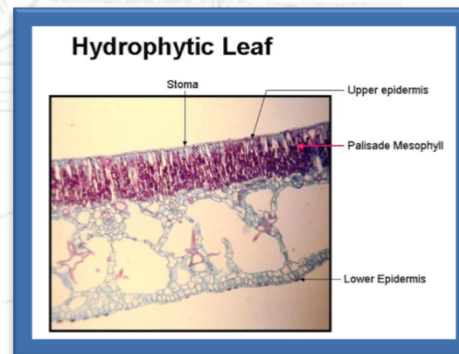
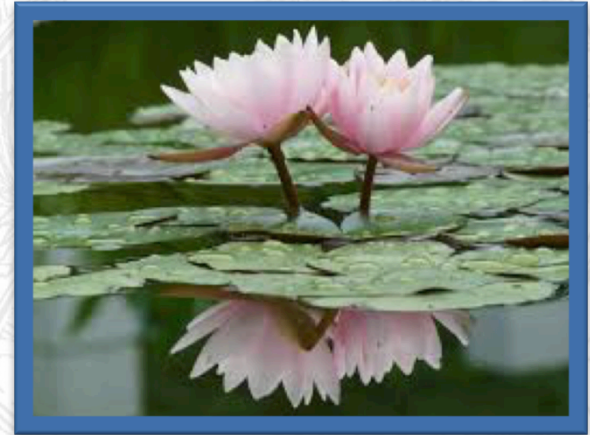
A detailed botanical illustration of a water lily plant. The drawing shows several large, round, lily pads with prominent veins, floating on a body of water. The stems of the leaves are long and thin, extending from the water's surface down to a cluster of roots at the bottom. The illustration is rendered in a fine-line, etched style. The title 'Nymphaeaceae' is overlaid on the center of the image in a large, blue, serif font.

Nymphaeaceae

Rachel A. Noriega

General Characteristics

- Water Lily family
- Aquatic perennials
- Primitive (lack of vessels)
- Intercellular air chambers
- Thick fleshy rhizome
- Showy solitary flowers
- Floating/ submersed leaves
- Mucilaginous covering



Key

A) Leaves centrally peltate...*Brasenia schreberi*

A) Leaves with basal sinus

B) Four green/purplish sepals, several white or reddish petals rhizome short/ erect-ascending, blades up to 6cm long...*Nymphaea*

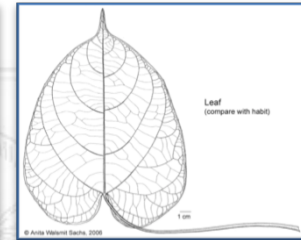
tetragona

B) Five or more concave yellow sepals, petals stamen-like, rhizome long/horizontal, leaves up to 25cm long...*Nuphur*

C) Sepals 7-9 yellow, anthers reddish, petioles terete...*Nuphur polysepala*

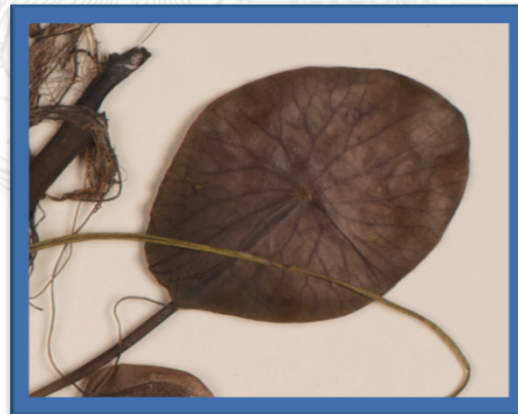
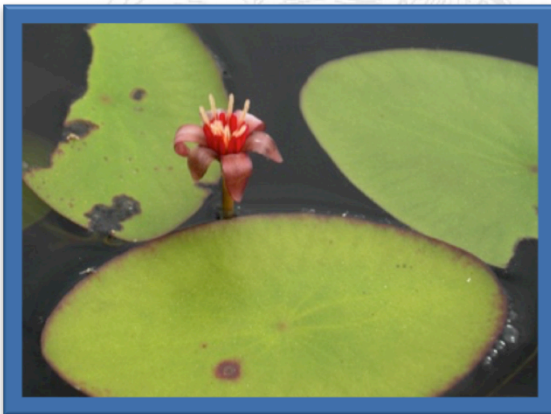
C) Sepals 6 or less, anthers yellow, petioles flattened, Inner sepals are red on the inside at the base...*Nuphur*

variegatum



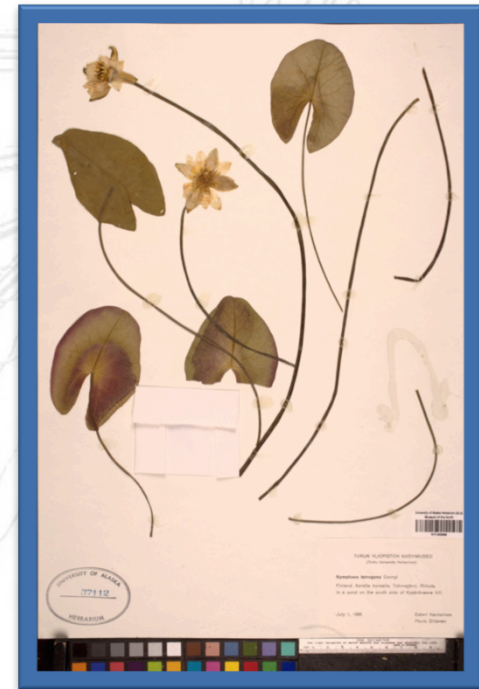
Brasenia schreberi

- Leaves long-petiolated, centrally peltate, entire or crenate
- Sepals 3-4
- Petals 3-4 linear sessile
- Stamens 12-18
- Pistils 4-10
- Fruit clavate indehiscent



Nymphaea tetragona

- Leaves ovate to obovate
- Flowers 4-5 cm in diameter, quadrangular base
- Petals 10-12 white (pinkish/crimson lines)
- Stamens 12-40 (inner with broad filaments)



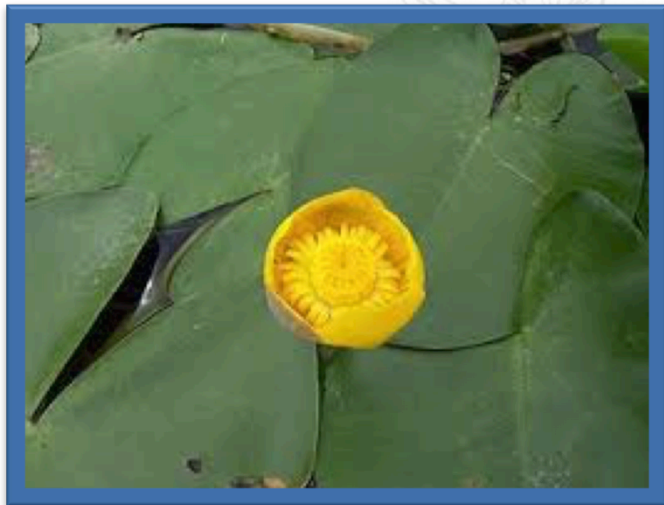
Nuphar polysepala

- Basal leaves thin, floating leaves long-petiolated
- Petioles terete
- Sepals 7-9 yellow
- Petals narrowly cuneate hidden by stamens
- Anthers reddish
- Fruit ovoid to subglobose



Nuphar variegatum

- Basal leaves thin, floating leaves long-petiolated
- Petioles flattened
- Sepals <6 yellow (inner sepals red at base inside)
- Anthers yellow
- Fruit ovoid to subglobose



References

- Hulten, E (1968) Flora of Alaska and neighboring territories. Stanford University Press, California
- Cody, WJ (1922) Flora of the Yukon Territory, Ed 2. NRC Research Press, Ottawa

Specimens

- *Brasenia schreberi*: V156211, Steven Trimble, Duke Island. Plants emergent from organic muck in shallow freshwater lake 50-200 cm. Plants with only immature flower buds. Elevation, about 69 m N54.93006 W131.3331
- *Nymphaea tetragona*: 37112, Esteri Kankainen and Paula Siltanen, Finland Karelia borealis. Tohmajarvi, Riikola in a pond on the south side of Kyparavaara hill.
- *Nuphar polysepala*: V153423, Patricia Loomis and Alan Batten 1910, Yakutat D-8 Quad: T25s R26E SW NW Sec. 14, 59 49.10' N 14 55.11' W Cape Sitkagi 2.5 km NW of Fountain Stream. Abundant in small pond.
- *Nuphar variegatum*: V125617, William James Cody 32381, Small island in middle of an Unnamed Lake 60 07.5"N 127 21.5'W

Questions

