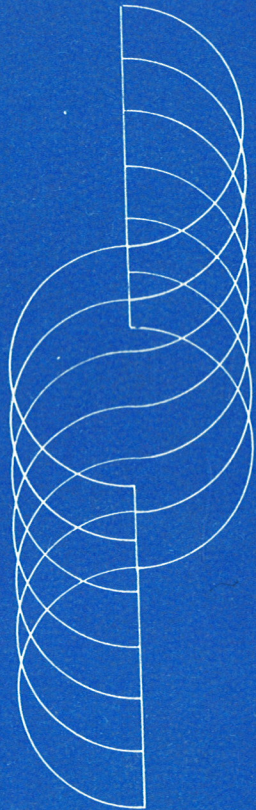


JCE 82 IV



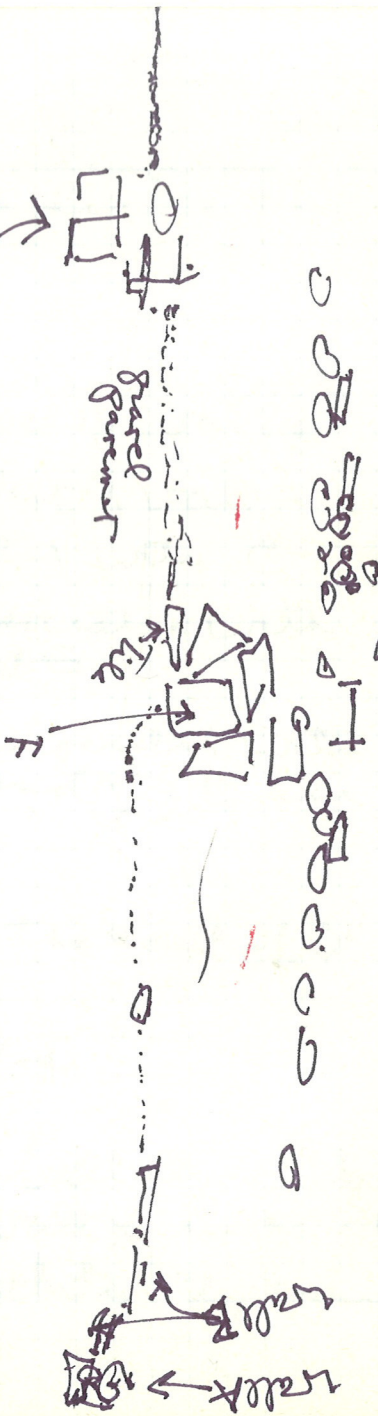
pignastyl

015

July 19

Section along
wall X.

(X) Square
limestone
mass



Wall A = Old large blocks of limestone, some
~~fields~~ "pudling" stone clumps
fields.

Wall B. Best limestone.

Wall C. Large clumps of "pudling" stone
fields, some limestone.

Walls D, E, similar to C.

Walls F. Large irregular blocks of
limestone.

Wall X, Y, Z. Fields, tiles, some smaller
limestone and "pudling" stone clumps.

wall C seems to continue north under baulk in N'-3. but there is only one puddingstone chunk in line, to indicate this.

~~Pavement~~
levels

- 8.9 (1) Pavement associated with wall A, at level of "wall B"
- 8.67 (2) Pavement to west of wall F and associated with C
- 8.62 (3) Pavement associated with walls D and E
- 8.4 (4) Pavement associated with walls (X) and (Y) to the west of (Y)
- 8.3 (5) Tile fall to the east of (Y) in N'-4
- 8.08 (6) Sewer in M'-4
- 8.48 (7) bottom of bath tub 1 to north of wall X in N'-5
- 8.26 (8) bottom of bath tub 2, baulk

Levels

- 9.08 (9) Lower, less distinct layer
of very fine pebbles, visible
in East face of cut along N'-5
O'-5. This more evident in
South half of N'-5 Taken at
midpoint N'-5.

- 8.80 (10) Upper, more distinct layer
of fine pebbles. Taken at
three points in North half of
N'-5. (It was cut away already
in South half of N'-5, where
wheelbarrow track passes above.)

- 8.78 (11) Midpoint of north half
of N'-5. The distinct layer

- 8.79 (12) N'-5. The distinct layer

The less distinct layer would seem
to be right for pavement of ~~last~~ last
extension of ABC building. The
more distinct, that of XYZ building

Instead, after we look at numbers, the more distinct layer is approximately right for pavement of ABC building. The less distinct may have been associated with ~~off~~ abandonment of the archaic sanctuary. Let's see how it compares with layers of ~~bank~~ N-S bank ~~at~~ N'-S/O'+S removed earlier this year.

Layers of (ballistics) of bank ~~at~~
 from works notes

	P'-S	O'-S	midpoint t/A'-S
bottom bat 3 (July 5)	-9.08	-9.06	-8.93
layer (bat 4) (July 9)	-10.05	-9.97	-

Let's see now if bat 3 has Classical, bat 4. archaic. If so, that is significance of fainter layer of pebbles.

levels on puddingstone blocks.

top 2 stairs in monumental wall
- 8.89

top of second block from south
in monumental wall (in situ, upright)
- 8.58

top third block in "west"
puddingstone monumental
wall (highest, in situ upright)
- 8.94.

Note, that these blocks of "west"
wall" are not large, nor are
they as high as those of east.
Perhaps they didn't have to be.

Today, removed wheelbarrow
dump. First tiny little section
over continuation of pebble
pavement to east of wall A.
Then below level of wall A, to
south. First latitude here is
large roots of canne

A shallow battleda in the area of the fieldstone pavement to the east of the long fieldstone wall. We go below the level of the pavement. roots of Carnea and archaic pottery.

It is clear from cleaning of fieldstone wall and pavement that the pavement came after the "west wall" of puddingstone.

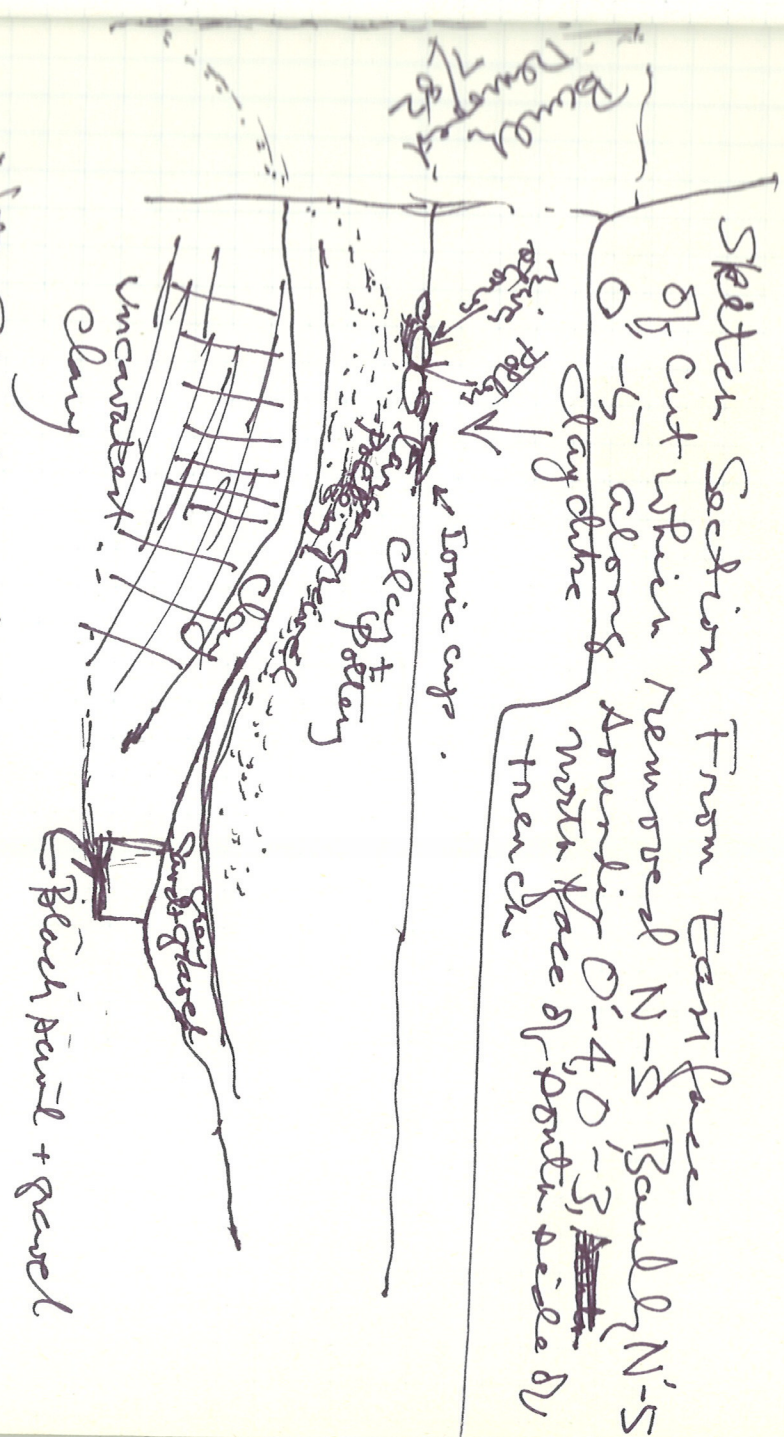
Note. In bottom of this 14th battleda about 80cms to west of our cut (reversal of NS bank) and 80 cms to south of the EW sounding in 0'-4 / 0'-3 of 1982. - deposit of Torricup. Vertically they are above the clay bank which (in sounding) has been shown to divide E and W channels. The cups are first to west. an area of fieldstone pavement.

"West Wall" preceded pavement
because some of field stones filled
areas when there were chucks
removed from pudding stone.
fieldstone pavement respects also
fieldstone wall: but should be
contemporary.

Later ^{NS} wall of smaller fragments
of puddingstone stops short of
fieldstone wall. It is separated
from fieldstone pavement by a
layer of clay about 20 cms thick.
There is a clear corner in fieldstone
wall just to west of point where
later NS wall stops. The North
projection of fieldstone wall here
stops where later wall stops.
Could the later structure have
made use of this small section
of fieldstone wall for its foundation?
The southward extension of
later wall beyond EW fieldstone
wall composed of large blocks
of puddingstone. like those

roughly in line with it - the
three which have been toppled
over and are clearly not in situ
They could have been reused from
a southern part of West wall. of
puddingstone which had larger
blocks. The puddingstone blocks
left in situ, do partially
support the later wall.

The mound of fieldstone
referred to above as a ~~paravit~~
which is found just to ~~east~~ of
puddingstone wall. seems
to stop short of west lane
of West Channel from spring
The eastern sections of ~~paravit~~
may also relate to channels of
archaic spring after it had
filled up to a certain level.



Sketch Section From East face
 of cut which removed N-S Bauld & N-S
 0-5 along clay like
 trench

Note: Rising tones here in section as well as
 0-4 fallen out pottery out top of graves layer.

July 20

We begin this morning to work in two areas.

- 1) N'-4, west of wall X and east of wall Y, northward to the north edge of the baulk which has been removed, and eastward to wall Z.

So far in this area 2 battens to take the baulk down to level of tile fall or just below.

1 batten to south of baulk we should call the next general batten, no. 3, keeping in mind that a second was not made

in area to south of baulk

- 2) Area to east of wall A to the ~~east~~ as far as the cut which removed the NS baulk N'-5/O'-5

Object to see relation between XYZ and ABC
Doubtless could push up some of Paul's previous observations

in O'-3

to the boundary in 0'-4/0'-3
(7/82) Object here is to
reveal course of W channel
and pit which appeared,
partially exposed by removal
of baulk N'-5/0'-4

In this area we are now
completely battened. Which
as noted yesterday is mostly
canne roots with some
archaic pottery

In X X Z building. Part 3
is in and just under the
tile fall, associated with
the walls.

In SW corner tiles over a
coarse pavement, with irregular
flat pieces of limestone crs
to west of wall Y. In
NE corner of trench about
5cm below level of coarse
pavement is one of five pebbles
which might be that of ABC
building

Take photograph of fall
and two pavements. This
is all the first battuta -
To South in O'-4, N'-4 East
battuta 2 produces small
votive cups shells.
Battuta 3, a lot of pottery
especially at North end of
trench is exposed. Small
votive, some cups; have
base - .

Levels for N'-4 XYZ buildy
tile fall and pavements
~~bottom of~~ bat 3 begun this am

1 - tile fall - -1.85

H: 0.13 above 675 -1.92

bm. -675 -2.0

N'-4/O'-4

Photograph

levels bat. 3 taken by mark

In The XY2 Structure
Cat 3 corresponds to habitation
level, between tile floor and
floor. Bat 4 is under the
floor and down to the second
pavement of small pebbles.
Bat 4 contains mostly coarse
ware.

In bat 4 of the South
area (over W. Channel) large
vessels, and an amphora rim.
There is a piece which looks
indigenous and the is fragment
of a cup with concentric circles
(line from city, as thin)
Bat 4 is the first that has
a really high content of sand.
There is an isolated mass
of small stones in center of
trench (excavated w/ shovel)

which might correspond to the
west bank of west ~~channel~~ Channel.

levels N'-4 above W
bat 4 Channel.

-3.17 North end of trench

-3.25 South end of trench

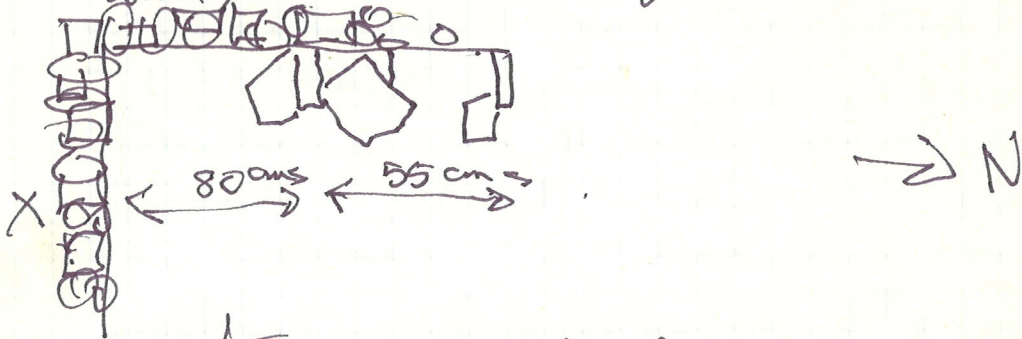
bat 4. had a little
vase under the large
one at N. end of trench

N'-4 north of wall X.
The west side of space
beside wall Y does not
have pavement.

Small feature in west wall
are two upright stones

July 21

Notes of wall X., in SW
corner of space defined
by walls X and Y (and Z)
at the level of the 2nd passage
there are two upright flat
stones, one horizontal
wall



The top of this feature is 40
cms below the top of wall Y.
Position corresponds with
large mass of stones, irregular
Car pass in South face of cut
below wall X.

Notes

What has been referred to
as pavement 1, of XYZ
structure has many fragments
of sandstone in it, of various
dimensions to have formed
part of wall. There are smaller
pebbles, ~~but~~ which would
have belonged to pavement.

The larger stones are
probably fall from the wall.

We have a sample of this
"pavement" in south next to
wall X. & but excavate in
SW corner to clarify the
feature with upright stones
and to look for more of
conglomerate block wall.

Pepe thinks he has evidence
of where a block was in
this corner -

Large flat-stones like those of
Wall B are found below the
level of pavement 1, next to the
feature described above.

The excavation enlarged by
taking down some ^{more} of EW bank
in N'-4 and cutting through the
y wall in area of bank
where it is very thin.

Bank. Upper level. - 7.70

There is grey ware, tiles
like that from the factory.

At - 8.14 there is a layer
of gravel which is also
evident in south face of EW
bank, almost no material.

(We are just below stake
N'-4. This layer of
gravel broken tiles is more
or less even with top of
Wall X, ~~where~~ (perhaps just
slightly above, whereas the
so-called pavement 1. is below

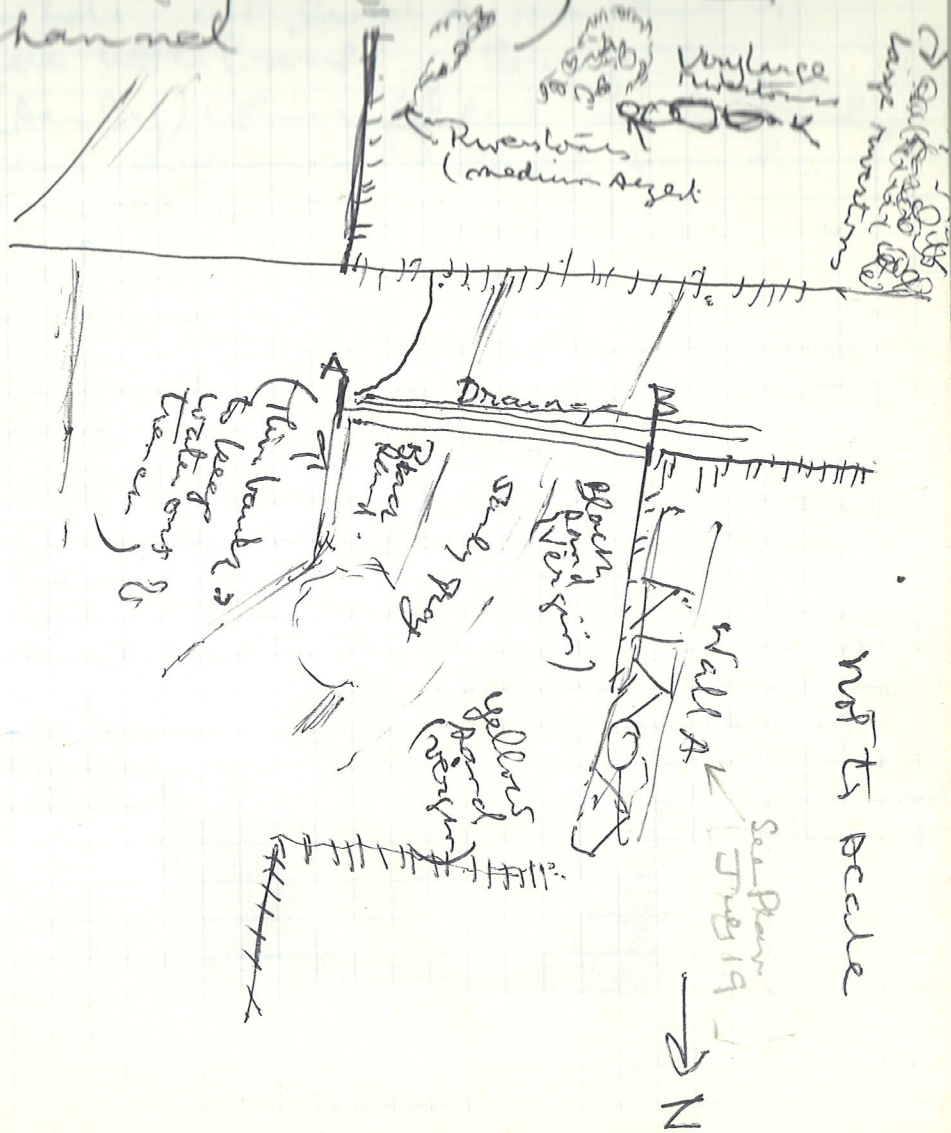
level of these foundations walls
Hollowed from this level should
be considered as part of
battlement of lower.

Note: The limestone block
found in corner ~~of~~ walls X and
Y is found to be a trough; hollow
out with these walls. There are
several pieces of wall broken
away.

In N-4 "above west channel"

The course of channel and
relation to pit filled with
grey clay is now clear. The
lowest level of channel is
visible in section. at the
south end of this trench. (A
small bank was left between
this NS trench and the EW

Trench, dug earlier. This
 forms as wall of drainage
 channel out of EW trench,
 created by berms. The
 channel



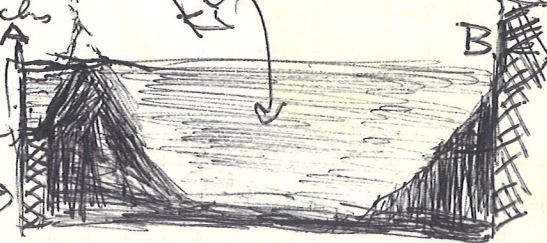
The channel visible in the little bank beside drainage ditch in S end of NS trench is about 80-90 cm wide at level of the top of the little bank. Gray clay (early) which filled it stands out against black sand gravel into which it was cut.

Note. This black sandy soil is found all over the southern end of this area, also in ~~SSE~~ corner of collecting basin as we saw earlier this year.

Note: The mound of clay in East end of EW trench is 0'4"/0'3" is probably not a dike, but full of chambers

Small bank between EW and NS trenches looking South

NS Trench



(not to scale)

Black sand gravel

both West and East

EW Bank in N-4 again

But 1: Gray ware
superficial.

But 2 - ~~no~~ material, several
pieces of BG

~~But 3~~ Down to thin layer of
gravel at level of top of
wall.

But ~~3~~⁴. BG Cap. in ~~bank~~
vault

But ~~3~~. to level of so-called
pavement 1, which consists
here of fine pebbles.
BG base handle.

But 4 - coarse ware

Rectangular pit in West
Channel

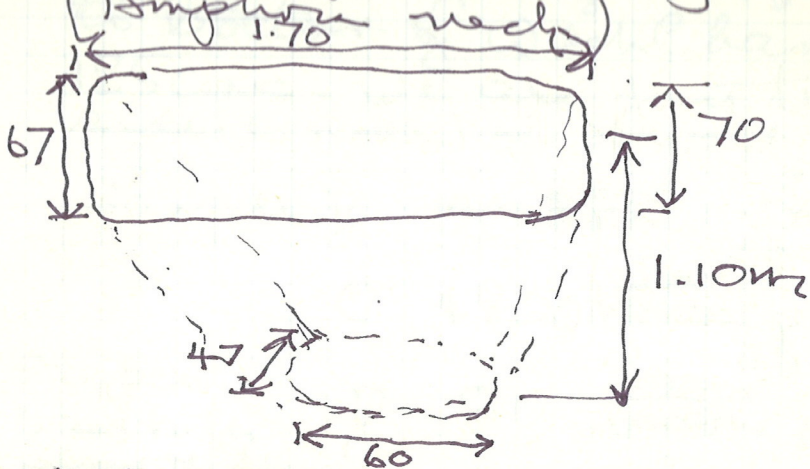
It is filled with clay on
top, sand soil below and
layers of very fine gravel.
Material includes very
large cup, Amphora neck
and rim. An agglomeration
of shells - oyster, telene,
etc at South end (photograph)
which was attached to two
large stones

The sounding in depth
through the ^{2nd} pavement in N-4
Dark brown soil differs from
clay in area of channel
We reach virgin at about
40 cms below 2nd pavement.

Continued from previous page

July 22

Continue in rectangular pit in Wash Channel. It is a water deposit or a basin for collecting water.
(Impoundment)



little material in bottom

Fill drainage channel from
spring area with large river stones
Refill rectangular pit with same
soil

Pollen Sample. A. Surface
 From East Face of Cut
 beside W. Channel in N-4
 beginning from level of pavement
 of XYZ through ABC.
 to bottom of Wash Channel.
 125 cms. We are just this
 side (to north) of X wall.

Sample B 120 ~~below~~ ^{below} (pavement
 of XYZ)

C #900 ~~below~~ ^{above} pavement
 of ABC

Samples 5 cms high
~~at~~ midpoint
 levels
 indicated

D 80. ~~below~~ ^{above} below
 ABC part

E 60 ~~below~~ ^{above}

F 40. ~~below~~ ^{above}

G 20 ~~below~~ ^{above} bottom
 of Wash
 Channel

H 0 above bottom
 of W. Channel
 Virginia Ave

Even from the top of the
Bogor samples. V. zofia
Samples taken from the West
face of the NS cut ~~from across~~
the fallen structure and boulders
in the north part of the collecting
basin, at ~~M~~ - 7 1/2. The
samples are keyed into a vertical
coordinate grid drawn over
Suzanne's section. The grid
is divided into vertical strips
10 cms wide and horizontal
strips 5 cms high. The
thickness of the blocks to be
removed is 20 cms.

First vertical column is at
D.E, second ~~at~~ at M.L and
third, at R.S.

Pepe removes the fallen
stones just below wall to
expose a vertical section of
it. We have the impression
that the stones against the
wall were deliberately placed
there to reinforce wall, though
some are certainly pieces of

parts of sandstone wall
The field or enclosure, filtered
water. Lots of gravel and fine
gravel. Varies sand under wall.

Alessandro ~~measures~~^{measures}
all the bedding stone blocks
on this part of the site - to
determine if they belonged
to 6th-Cent enclosure wall.

Square 0'2
I

22-VII-72 JCC
(JB) Bull 5

Some of the workmen worked yesterday levelling off the northern part of the trench, where it was left slightly higher ^(approx. 10cm.) after Batt. 4 in this square. Finds were: a few boxes, large pieces of coarse ware - an amph. toe, rims of mortaria - no pastagugia no amthie.

End levels 0'30 - 8.99

0'20 - 9.00

This northern section ^{is} ~~is under~~ the level called level B when work was done earlier this season in this area between June 10 and 14. Materials are those of the surface and approx. 10cm. below.

02 July 82
23-VII-82 J.B.

prohibit

Four workmen using picks
and the dumper move rapidly through
this bathuta, approx. 20cm. deep.

Materials - many bones - large
(cow or horse) and coarse wares
and tiles. One amphora rim and
handle is Corinthian A - (could be as early as

mid 7th or as late as mid-sixth). There is
also one small black glazed (?) unguentarium? base.
The earth is mixed; clay with sand

mixed in. Munsell: South - 10YR 4/2 dk. grayish brown
Sandy clay 10YR 4/6 dk. yellowish brown
Pure clay W. of tiles 10YR 4/1 + 4/2
(dark gray + dark greyish brown)

To the East Leonardo finds a level

of tile fall and clay w/ ~~out~~ sand.

Just east of the tile fall + the large

limestone block there is pure clay

Munsell: 10YR 4/1 (dark gray)

②

0 1/2 cent'd
wall to level

The tile scatter begins about 60 cm N. of ~~the~~ The south ~~part~~ wall of the trench ~~and~~ with very few tiles. They are more dense in the ch. of the trench, and stop under the large limestone block. There are small pebbles mixed with the tiles. Further north, next to a two other large stones is a moulded mortarium (or coarse Krater?) with ivy decoration.

There are also fragments of thinner wares to the west - one black glazed skyphos handle, for example.

In the 2nd meter to the East, and 5th meter to the north, the soil changes to pure clay, which is uncovered as far as the tile fall.

A bit N., under the column drum is found one shield of Pasta Regina.

The area ~~is~~ ^{is} ~~to~~ ^{to} be ~~the~~ ^{the} Batt. 7 ~~is~~ ^{is} ~~to~~ ^{to} be ~~the~~ ^{the} Batt. 7
Batt. 7 ~~is~~ ^{is} ~~to~~ ^{to} be ~~the~~ ^{the} Batt. 7
the edge of square 0'2.

It is decided to leave the tile fall
for this the time being. Thus Batt. 7
will include only the area West of
and S. of the tile fall.

and ~~the~~ levels:

p'3.	-9.14
p'2.	-9.22
ctr. of tile fall.	≈ 9.09
0'3.	-9.15
0'2.	-9.14

for over and over time

(range)
0.5 2000

0'2. Bill. 7

(San Francisco file) 25-VI-82-573

Very faint handwritten notes, possibly describing a process or list.

- Not (3) two large logs
- (5) one
- (2) one

Very faint handwritten notes, possibly describing a process or list.

Ge type ... of last
day of wall ...
part ...

From Carbonized layer in
vault N-6, that which
didn't go to Rome.

Nos. (3) two large bags

(5) one

(6) one

to be
collected
separately

II (2) one, collected separately

unnumbered, collected
separately

Group of buff-colored
gray J. Maff... of sand
... of sand

Bulk
sandy layer mixed with small gravel stones and
clay patches
In this layer a sandstone block 42x36 cm

Predominately clay layer with sandy
patches. Some small pottery chips and
organic material (wood)
Sandstone block lies on top of clay layer

Fine sandy layer with pottery chips
North side of bank mostly clay

Clay layer with abundant organic material
near large Calc. block

Some small and medium sized sandstone and river
stones level with bottom of Calc. block.
A few tiles - one is located lower than Calc block
on top of previously mentioned stones is a
layer of greenish coloured clay which also
spills over into North side of bank (possibly
mudbrick)

- more tile fragments among stones ~~and on N side~~
- ~~and on N side~~
- all lie on top of sandy layer (Virgin sand)

N. J. Smith, Bristol, Conn.

very very nice people. I'd like to visit

at all times. I'm sure

July 26 + 27

Wash various soil samples
and take a final one from
the NE corner of collecting
basin. in two layers

Layer 1 includes the tile
fall (very thin to the east)
and main organic layer
(barley, -fig. etc)

Layer 2 goes through the
sand to the fieldstone
facement.

The precise location of sample
E face of cut in bank
made to expose the long
Caparo block