

I

1982

PZ

Excavation

Notes

JB

JCC



Pizzica - Sanctuary 1982

June 1 (JCC taking notes)

Began at 7<sup>00</sup> am with  
DiPierro and four workers  
Pacciani, Gallibelli (Carmin),  
Gruffato (Roberto), ~~Pot~~ Paradiso  
(Rocco). The morning was  
spent cutting high weeds  
and clearing the area of  
the excavation of all vegetation

Wellpoint arrived by truck  
from Vitello (D. Piero and  
two others unloaded it)

Afternoon, further cleaning  
and drainage of the  
sanctuary area.

Torraco lends us pipe  
wrench, D. Piero. another  
Torraco promises pump for  
1000000.

June 2

We begin studying the setting of collector pipe. It has to be high and along the line of the modern pipe line on the north side of the sanctuary and as close to the bank as possible. We attach it with long metal stakes which D. Jants has procured from Monte Capri.

One point in my lunchtime problem is that water level in Canal dropped about 11" making it necessary to move pump closer. It gets away and ends up in the Canal. Fortunately no damage but lots of shouting and cursing. The rubber tube attached to the piped with "manicotto" comes off giving Leonardo a

late. Mark records the event with photos.

After lunch, a second point put in. It is decided to ~~use~~ use a longer pipe with manilla since the points are long and they are ~~unsuccessful~~ unsuccessful at making their own way down. These points were used in sandy soil of Temple area, but layers of gravel and clay here create a whole other ballgame.

Two points in at the end of the day. but equipment ready for use in morning. I need to get diesel fuel and oil. Buy beers and cokes for all. This is really work!

~~knows~~  
FIND BG base in clay fill

Leonardo is on the pipe and  
outstanding, indefatigable -  
Di Taranto runs pump and  
sieves. He and Leonardo  
work together. There is a good  
atmosphere -

In evening a call from Don  
Sullivan who gives instructions  
about getting pollen samples.

- 1) 2 cm<sup>3</sup> sample every 5-10 cms
- 2) Clean trowel each time
- 3) use plastic bags
- 4) send directly to Sullivan  
by Air Cargo
- 5) Photograph deposit and  
surrounding landscape

June 3

Third joint is also very tough. Whole day with machetes, but it is blocked. Start all over again.

The stratigraphy that the point encounters

1. Argilla (clay) to depth 2 meter. Fill of basin organic material
2. Ciottoli (fieldstones) of pavement
3. Argilla again
4. Sand. which is thrown out from hole evenly 2m thick
5. Red sand. This is where the gang is really rough. This is at about three meters <sup>down</sup> the west side <sup>of the collecting basin</sup> where we are working now. We hope

It does not continue to the east, but probably it does.

Find: Rectangular thin chunk of wood which comes out of hole. Probably from pile above fieldstone pavement (astirous base found yesterday).

Note. We should make soundings in clay below fieldstone pavement, for pollen samples. This will be a sealed deposit and should give us info about landscape ~~pre~~ of the period preceding the construction of basin.

Third point down cut 8<sup>10</sup>. Nine to go.

By the close of work at  
4:00 pm 9 points and  
the mancolets are down

June 4

Remain three points on  
last side of deposit  
down and a second  
collector with two valves  
set perpendicular on the  
west end so as to absorb  
around the well.

Go to league to request  
Rible from Nunzio and  
addition 4 points of  
5 meter length. We will  
try to get the contractor  
~~functioning~~ functioning for  
this evening so that it  
can be drying out all  
weekend ready for Lorenzo



We need to set up the cables on poles, and run it to the shop below Torracos house.

Also in preparation we need to clean the area to be excavated and ~~take~~ levels over the week end. We also need put in a grid.

I need to review notes on the previous work

1) Well Trench 1981

2) Collecty basin and Spring - Well 1977-1978

June 7 (Mon)

Begin by preparing level  
repart forms.  
Anne ~~the~~ levels on all  
lettered stakes beginning with  
N'-6, and intermediate  
stakes at 2.5 m and the  
corresponding joints against  
pipe.

The pump is covered so as  
to draw later and digging  
begins in in the east  
half of N'-8 at the ramp.  
Soil is sandy grey clay  
Dumunsel 10YR 4/1. The  
sand is reddish like that  
which came out from under  
the fieldstone pavement as point  
were being put in. There  
are quite a few fragments  
of tile.

June 7 (Mon)

Begin by preparing level  
reparations.  
Aune takes levels on all  
lettered stakes beginning with  
N'-6, and intermediate  
stakes at 2.5 m and the  
corresponding points against  
pipe.

The pump is lowered so as  
to draw later and digging  
begins in in the east  
half of N'-8 at the ramp.  
Soil is hardy grey clay  
~~Dark~~ Munsell 10YR 4/1. The  
sand is reddish like that  
which came out from under  
the fieldstone pavement as point  
were being put in. There  
are quite a few fragments  
of till.

This level has not be  
excavated before. This is  
the bottom of the ramp  
created last year  
We are roughly opposite  
the mass of stones in the  
NE corner of N'-8 and we  
should be directly over  
the negative of the block in  
the SE corner of M'-8  
When we reach the east  
side of this square

Material includes some  
frag of loam weights,  
black ribbed ware

We trace out baulks  
for whole trench -

20 cm on either side of  
the N' stakes. We also  
leave three meter wide  
baulks spaced ~~every~~  
approximately ~~every~~ apart

against the north side  
of the trench. This will  
be for the pollen samples.

We begin removing  
a uniform level about 20  
cm under Stanley

about the midpoint in  
M-7. Where there is  
the stepdown left from  
last year's work.

The deeper layers left  
after last year's work I  
want cleaned by hand  
with trowel because  
this is probably the point  
where the organic material  
is better preserved as it  
has greatest flow of water

Material to the south of  
our 40cm wide baulk  
is collected separately as  
it has likely been deposited  
at its present level on the  
bank (the original one  
left in 1978 and taken  
down last year) collapsed  
under pressure of winter  
rain.

Material from first baltita  
~~which~~ which is more nearly 10  
cms thick contains more  
thin coarse wares and  
some BG frags of large  
vessels.

This first baltita is down  
to level where dumper ~~was~~  
wheels sank last year.  
There is lots of stuff thrown  
up when we'll point put in  
this year.

There are some large  
field stones (from pavement?)  
toward north side of trench

A sort of wall next to  
the trench wall appears  
in M'-7. 4 or 5 limestone  
flat slabs aligned.

In the area to south of  
40cm bank in M'-8 at  
about 2.8m from strike  
(toward west) appears  
another stone wall which  
first came to light in  
1981 when bank came  
down. It has to do with  
the pile of stones on  
east side of N'-8, just  
to the west of the negatives  
of rectangular blocks, found  
in 1978

There is a slight slope downward to the west -  
Soil on eastern end of trench has lots of small "breccia"

But one has a ~~good~~ greyware plate rim and a nice RF crater rim as well as frags of large and small coarse ware. Most material concentrated in the west end of the trench in M'-7.

In NK-7 next to well on North side (at 2.5m from ~~from west~~) in lat 2. We uncover a bit of ancient wood and 2 BG shards together. There is grey sand, evidence that



water flowed here. This might  
be the upper edge on the  
north of the basin, the wall  
angles slightly southward  
to the east and disappears  
into the Drainage cut on the  
North and West.

In M-8 but 2 large  
brone recovered at same  
level as large coarser  
were fragment with  
some paint on it. This  
at about 3 meters and 4  
meters respectively from  
west side of square.

In the extreme NE corner  
of the excavated area under  
the pump is a patch of  
Aard which is perfectly  
rectangular and on a line  
with the negative of a

dia 38  
h (max)  
17cm



Fragment of millstone which  
appeared in plans in 1978 and  
1981, removed ~~to~~ with lat 2

discovered in 1978 just to  
the west of stake N-9  
~~Both this~~. The overlayer is  
full of yellow sand. Both  
it and the block found earlier  
seem to be oriented almost  
perfectly NS, in contrast of  
the "negatives" found further  
south in 1978.

But 2 is thick grey clay  
and it pulls away from  
the soil immediately  
underneath.

~~to~~  
We will arbitrarily call  
lots 1 and 2, level A, and  
the next ~~work~~ level B  
but will continue the lots  
in consecutive numerical  
order, so as to avoid  
confusion with our level  
tubers, etc.

It rained at close of  
working day. Rex's birthday

June 8, 1982 Thursday  
Sunny and cool. Continue  
bat 2 in M'-8 at its  
east end (to the south of  
the pit) and core found  
on the preceding day.

Take levels out to West  
end of well trench in order  
to check the sections made  
in 1981 and coordinate it with  
this year's work.

Material from the last  
bit of bat 2 contains a  
Piriform unguitamin.

Cleaning of stone which  
appeared in bottom of  
M'-7 at ca. 3 east of  
plank and 1.4 m south of  
north walk. Wood samples  
They come out beside slabs  
which seem to line up  
~~with those~~ on a N-S  
direction with those

which are tumbled(?) from  
the NW - SE strike of flat  
limestone blocks.

The clay which contains the  
wood (grape vine?) is  
10 YR 3/1 "very dark  
gray".

Call this wood sample (D)

Work was ~~of~~ suspended  
in the well trench at  
about 10<sup>30</sup> in order  
to allow the ground to  
dry out. The situation  
in the west end of the trench  
especially delicate as  
organic materials. Material  
wells begin to appear during  
cleaning. Covered with box.

We shift entire crew to  
squares N<sup>1</sup>2 & -2 on the  
west side of the site.

This is an area where  
a thick tile fall appeared  
in section in east wall of  
the previous excavation (1978)  
A well built archaic fieldstone  
wall disappeared under the  
trench wall, and there are  
several large limestone and  
conglomerate blocks evident  
there.

By getting down the first  
bathhouse, - the grass cover  
very hard dirt and lots  
of gravel removed. No  
material  
Color "very dark grey" 10YR 3/1  
at about 20cm from ~~ground~~<sup>grass</sup> level  
moist.

Wednesday June 9

Begin section 2. The ground is noticeably softer and moister dark brown

N'2 but 2 A large number of irregular limestone blocks appear in trench floor. They do not line up. Looks like dump such as we found against the north bank in 1974. Sandy but fewer bones are coming up. And stones are less compact. ~~It~~ It is more nearly like the ~~material~~ material from L'2 L'1 (sandy to north of modern irrigation channel made in 1978 which is continuation of the Roman dump.

There are two big blocks  
of "pudding" stone whose  
tops appear in the bottom of the  
trench after bat 2. They are  
roughly on an E W line.

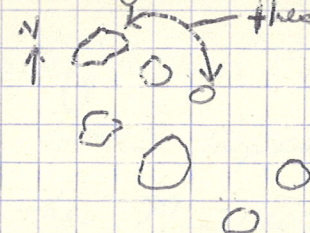
bat 3 began late in day Dark  
Grey clay in clumps which  
is hard to shovel. Almost  
no material (In contrast  
to the situation in #1.2  
bat. 2, the north end of  
our trench, where there  
was a lot of coarse ware  
and some BG frags.

① Square 0'2 Batt 3

10-VI-82 TH  
J.B.

Unidentified. There are 7 large pebbles or small cobbles at the junction of this

square with square N'2, arranged

like so: 

They lie <sup>20cm.</sup> ~~5.~~ S. of the 2 limestones  
in the Ctr. of Square 0'2.

Near these 7 stones Leonardo removes  
several large bone frags (Cow(?) Horse(?)).

There is one rounded limestone in the  
left (N.W.) corner of square 0'2.



(2) Square N'2 Bath. 3

10-VI-82 TH  
J.B.

The 2 limestones to the S. Ctr. of the trench seem to lie on other stones. Soil color and consistency is the same as in Square O'2. There are not many bones appearing, as there were at the N.-most Ctr. part of Square O'2. There are some smoothed rocks - pebbles mixed with roof-tile fragments. The large pudding stone is still firmly imbedded, as are the small puddingstone, E. and <sup>the</sup> limestone ~~is~~ just N. of it.

③ Square N'2, Batt. 3 (cont'd)

10-VI-927H  
J.B.

A large chunk of limestone comes up between the 2 puddingstones.

E-W it measures 40 cm. (as much as is uncovered now). A small piece of limestone appears N. of it, but N.W. of the limestone chunk and puddingstone on the <sup>for</sup> East of the trench. There is a small patch of pebbles in the ctr. of this square. 2 small limestone chunks lie ~~in~~ <sup>in</sup> it, and it is about 0.5 m. x 0.5 m.

After brushing, many pebbles, smoothed + rounded (approx. ~~3 cm~~ <sup>3 cm</sup>) (approx. 3 cm. in diam. ~~are~~ <sup>appear</sup>) sprinkled around the cobbles and limestone in the S. of this square.

④ Square N'2 Batt 3 (cont'd) 10-VI-82 TH  
J.B.

There is a large pebble and flint  
concentration in the N. ~~W~~ E. Corner.

<sup>2</sup> There is a layer of them in  
the West Bank looking from  
M'2 and N'2,  $\perp$  and extending  
N. from N'2 at least 2M.

Of the stones in the square  
after Batt. 3, The rounded one  
in the 4<sup>th</sup> M. from W. and 2<sup>nd</sup> M.  
from S. is most deeply imbedded.

The puddingstone far E. and  
adjacent limestone are not floating.  
The rest are ~~scattered~~ barely  
imbedded or floating.

N.B. Batts 1, 2, + 3 in  
Squares N'2 + O'2 ~~and~~ are now  
level A. Square N'2 will be dug  
to the same level, tomorrow (11-VI-82)  
J.B.

⑤ Square M'Z Batt. V  
LEVEL A  
10-VI-82 TH  
J.B.  
Bank of 50-60 cm. left at W all along square  
This square was begun today;

We intend to dig down to the pebbles  
and tile and ~~the~~ limestone level  
found in square N'Z today.

Batt. V (~~is~~) is the top level  
of dried grass (0.5 cm. approx. depth).  
and a thick layer of ~~pebbles~~ pebbles  
and tile frags. The soil is dried  
and comes up in small chunks,

104R 3/1 Very dark grey. This Batt. V  
approx. of 25 cm. total is skimmed of  
rapidly with picks & shovels, using  
the dumper to cart the dirt.

Few  
~~the~~ Finds.

Finds labelled M'Z Batt. V  
Level A. J.B.

(b)

Square M'2  
Batt. 2 level 1.

10-VI-82 TH  
J.B.

Heavy tile and pebble concentration,  
mixed with med. chunks of clay.

not as moist as Batt 3 of N'2.

Pottery is not very densely concentrated  
in the S. of the square in this bat.

No boxes ~~was~~<sup>are</sup> picked up in  
the S. either. One half of this battuta  
was dug in the late afternoon.

Work will begin with completion  
of this bat. in the morning of  
11-VI-82.

"

J.B.

⑦ Square M'2 Batt # 1

This batt. is being finished today.  
There are still roof tile fragments  
and pebbles in a high concentration  
and the soil is 10 YR 4/2

(Dark grayish brown), in small chunks.

A Ramp ~~is~~<sup>is</sup> built to the N. of  
the square, to accommodate the  
dumper. The morning finds were  
a small bag of pottery <sup>(coarseware)</sup> and 2  
bone frags. No levels were  
taken at the S. or Ctr. corners.

J.B.

① Square M'2 Butt 2.

" J.B.

The dirt comes up in large chunks, hard to smash with the shovels. There are roof tile fragments and some smooth pebbles. Soil color is 10YR 4/2 (Dark grayish brown).

Findings: Bones - ~~some~~ quite a few frags. 3 teeth  
Pottery - coarse ware - amphora  
↓ large limestone, with a deep mark resembling a (?) quarry mark (?) on the north side. It is 19.5 cm. long and 5.0 cm. wide at the widest pt, and 2 cm. wide at the point where the dirt covers it. It is about 2 cm. deep.

There are 3 small rocks 20 cm. W. of this large rock.

The soil is hard to pick towards the north, and it comes off in large chunks.

" J.B.

(9) Square M<sup>1</sup>/<sub>2</sub> Batt 3

11-VI-97.1  
J.B.

Dirt is coming up in large clods,  
heavy and moist, Munsell 10YR  
5/1 Very Dark Gray. There are  
some field stones and many  
scattered roof tile fragments.

A large wide bone was found. 60cm.  
N. of S., and dead ctr. of the E-W axis of  
the square. There are some rounded  
pebbles in the matrix as well,  
The most interesting thing about this  
Batt. is the chunk~~s~~ of limestone  
which come up in the ~~dirt~~<sup>clay</sup>. They are  
all amorphous blobs; approx. 15 of  
them appeared in the ~~dirt~~ soil in the  
center of the square. The large  
piece of limestone in the S.E.  
of the square is still imbedded



in the with the ramp was still  
in use at the N. Ctr. edge of the trench,  
It was made up of loosened material  
from Batt 2 and the bank to the North.  
It is left in place after this batt. as well.  
It will take one more batt. to reach  
the level of scattered tiles and pebbles  
found 10-VI-82 in Square N'Z.

JB.

\* There is <sup>a</sup> ~~one~~ very rounded piece of  
fine stone appearing 5cm. E. of the large  
piece ~~of fine stone~~

Levels: M'2 - 8.265

N'2 - 8.365

N'3 - 8.505

M'3 - 8.33

Ctr. - 8.425

TOP of large limestone - 8.075

E. of large bone - 8.455

(11) Square N'Z Batt 4 level A 11-VI-82

This should be the final batt.

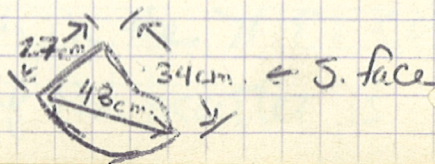
to take us down to the level of  
~~the~~ scattered tile frag. and limestone  
found 10-VI-82 in Square N'Z, Batt. 3.

The "surface" of tiles and pebbles in the  
N. - E. of N'Z does not connect  
with the tiles "surface" in the S. E.

corner of N'Z. ~~It may have~~ It may have  
been picked through in this spot.

The large limestone in the S. E.  
corner is completely exposed on its N.

side, and most of the way exposed  
on the S. It is obviously a broken  
column. drum (unfluted) with scratches  
and punctures on the flat surface  
which faces S.



(12)

## M2 Box 4 (cont'd)

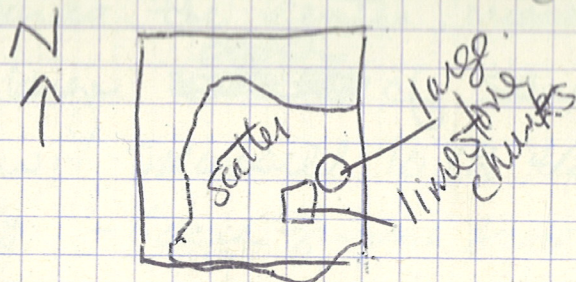
The broken part, facing N. and N.E. (it has 2 broken faces) is very banged up and rough. The "quarry mark" mentioned earlier is a large gash having something to do with the breaking of the column drum. The limestone, rounded, just E. of it @ 8cm. is very rounded, and looks like a hemisphere. it is approx 31cm. in diameter, and sticks up out of the ground 12cm. on the E. side.

The remainder of the square is scattered pan-tile frags and field stones; very few in the N.W. corner, not much in the N.E. corner either. Most of the scatter is

(13)

M<sup>12</sup> Hall 4 level A (cont'd)

in the center to the E., and South  
(3/4) of the ~~rough~~ square (see below)



Finds are a ~~double~~ <sup>few</sup> of good roof tile  
edges, coarse wares, and quite a  
few boxes.

The Ramp was left in place and  
widened in the center.

No levels were taken at end of  
day; These should be taken)

1<sup>st</sup> thing Mon. a.m. - On and

beside the limestone hemisphere and  
col. drum, and the corners and  
ctr. = J.B.

(14)

Square 0.2  
D. Bull. 4

14 V. 8. 11

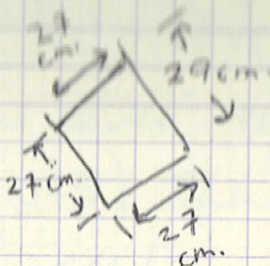
Today we start out in the fan  
S. of the trench. ~~Point~~ is in med. - lg.  
clumps with Munsell 10YR 3/1  
(Very Dark gray clay).

Towards the center, moving  
patch  
N. is a large ~~patch~~ of sandy  
clay with Munsell 10YR 4/2, 4/6,  
and 5/8 - (dark grayish brown,  
dark yellowish brown, and yellowish brown  
respectively). \* There are some small  
pebbles in the matrix but the  
concentration <sup>of pebbles</sup> is greater in the  
N-most meter of the square.

~~The things that are~~ There are large  
roof tile fragments many ends, and  
a bit of black glaze, ~~and~~ some  
coarse ware and quite a few  
bones. In the N. meter, <sup>near</sup> center is  
a limestone block, nearly square;

(16)

Square 0'2 Part 4 (cont'd) 11-VI-82 JB



It just barely protrudes from the ground. There is a larger, more ~~the~~ a-morphous limestone near the E. edge, approx.  $1\frac{1}{2}$  m. S. of North. A smaller limestone barely protrudes @ 40 cm. N. of the amorphous one.

~~Stratigraphic~~

The N. - ~~A.~~ W. of the ~~the~~ square is left ~~lower~~ higher than the portion further South. The ~~of~~ sandy clay continues N. on the higher

16

0'2 Batt. 4 (Contd)

Level. A level reading was taken (-9.885) on the edge of the higher part. The level of the rest of the trench:

is close to the level taken for the center. (-9.075) There are now

roof tiles imbedded in the ~~center~~ <sup>into</sup> N. part of the square and ~~into~~

square N'2.

\* There is more sandy clay, darker in color, <sup>(10YR 4/2)</sup> further E. of this patch.

The finds from this square and batt. are mixed with those from the next square —

N'2, Batt. 4.  
End levels

P'3	-8.995	
P'2	-9.005	"
O'2	-8.91	
O'3	-8.885	
(tr.	-9.075	J.B.

(11)

14 1/2 ft 2 ft 11

N'2 Batt. 4

The pudding stones and limestone chunks are floating or removed with this battuta. There is not ~~so much~~ any evidence of the yellowish sandy clay — perhaps because the digging is not as deep in this square.

(Pebbles) — gravel — is very dense ~~densely~~ in the center of the square, running N-S. This gravel continues N. from square O'2.

The pudding stone ~~rested~~ to the W. lies in the middle of the gravel patch. The column drum is more exposed but still embedded, and is not so surrounded by pebbles — only a field stone



(12)

N'2 (cont'd)  
Ball. 4

The finds are the same as in O'2, with one exception - roof tile frags, bones, coarseware & a grey ware spout. There was no greyware in O'2.

The matrix is 10 YR 3/1 very dark grey gravelly clay.

End levels:

N'2	-8.600
N'3	-8.665
O'3	-8.885
O'2	-9.005
Ctr.	-8.695
Tiles high (west)	-8.885
square limestone block	-8.985
Tiles, low (East)	-9.005

---

(A)

## N<sup>2</sup> Ball 4 (cont'd)

D. Toronto travels around a bit more and finds some more tiles in the S.E. corner of the square. They ~~cover~~ cover ~~the~~ an area from the center to the East, going from the area left in  $O'2$  to a lower spot in  $O'2$ , moving N. from the higher tiles <sup>to</sup> the pebble concentration. Thus, all come roof tile frogs packed in. The pebbles and tiles are firmly packed enough to be called a surface.

It does not reach the N. edge of the square and goes

through the center of it on a generally N-S axis. Finds one with those from  $O'2$  Ball 4.

30' M'2 Ball 3 N'2  
The <sup>30'</sup> ~~clay~~ comes up in medium  
clay, 10 YR 4/2 Dark grayish  
brown, clay.

There are fewer pebbles than in N'2,  
roof tile frag, and some field stones.  
Boxes <sup>of</sup> coarseware pottery (only <sup>coarseware</sup> one  
found ~~etc.~~ Some grey material  
~~collected~~

(hardened ash?) with charcoal inclusions  
~~is~~ 15 found and bagged separately.  
There are 2 catapult balls,  
one like ~~it~~ <sup>them</sup> was found today in  
O'2 as well. There is a large one  
just east of the column drum  
~~is~~ in this square (M'2) and another  
at the foot of the ramp.

The column drum is floating

Jun 15

Began detailed work in the well trench with Costantini present.

We begin by clearing the area of M'-6 East where samples were taken in 1981

Costantini makes use of level reports and divides it into quadrants, A, B, C, D. First sampled is B. Lots of material on the North Center of B. There are obis in Sects etc. The grey covers sand and field stones. There is a sort of wall in the north part of B, which runs east west.

June 15 (cont)

Top layer with thin wall  
thick piece of burned  
wood with oak marks  
a complete separator for kiln  
and a piece of 6th cent cup.  
This is to my recollection the  
only arboreal material in  
this part. Could have  
been brought over by the  
tree water of sapling.

June 16

Second sampling in M'-7  
M'-8. In M'-8 grape  
~~peels~~. M'-7. Very large  
vine.  
M'-5. in the baulk, just  
below the intersection of the  
old baulk removed in 1981

We removed all the blocks  
(NS) over this. Earth above  
the level of extension of the  
channel from the springs  
which passed here has rotted.  
It is clear that water here  
There is water runs over  
the level of the channel.

Third sample today is  
from layer ~~at~~ through basin  
in south east corner of  
N-6. Collect material  
from cleaning.

Separately ceramic material  
from soil sampled.

The depth of first block  
sampled is ca. 20 cm.  
It contains much burned  
wood (see notes 1978) and  
ceramic material & some  
tear

June 17, Sunday  
Continue sampling in  
SE corner of N-6.  
As noted yesterday, the  
level of burned wood and  
tile (-9.71) has

<sup>Ann's level</sup>  
produces quantities of  
carbonized grain (wheat  
and barley) and also grape  
olive (mature), and small  
beans (fava). Today we begin  
by taking the next level down  
in the same quadrant.  
For the remaining three, the  
sampling will be finished.

Why do we find this  
material in the middle of  
the basin, but not at the N-6  
(where the olives etc are not  
burned, and where the olives  
are also immature -

The notes listed by D. [unclear]  
and [unclear] that the  
clay of the walls and [unclear] the  
order of [unclear] of the  
shell, and that [unclear] began  
to gather around it as it  
was removed. Clay can  
trap [unclear] like a bottle  
[unclear] wonders why no  
buffalo bones. Perhaps also  
the animals came here to  
water. That there was a  
separate place for gathering water  
for human consumption.

If so why the ~~so~~ monumental  
walls, and stairway, - not  
for animals clearly?

Little burned wood etc  
was found at the N. end. It  
is concentrated in the center  
of the basin opposite the stairs  
(See notes for 1977 and 1978  
where large lenses of tile  
and wood were ~~incorporated~~)



It will be important to know  
what the gallery, especially  
the part of it that is to be left  
about the line span between  
the use of the surface field  
stone pavement, the destruction  
of the tile roof building and  
the stage of abandonment  
after it.

Yesterday it was decided  
to take a sample from  
S. End of basin where the  
N'-6, P'-6 baulk intersects  
The stem bed of stones  
which seems to form the  
closure of the basin on the  
south. Projecting the line of  
the wall in SE direction we  
found that we have to cut into  
old trench wall on south.  
Two large blocks of carapans  
just to E of the baulk found in  
just few centimeters of excavation  
of the southern ~~part~~ extension  
of the basin excavation we are  
approximated at position of  
stake P'-6.