

FIELD Notes

Pizzica 80

Pizzica July 15

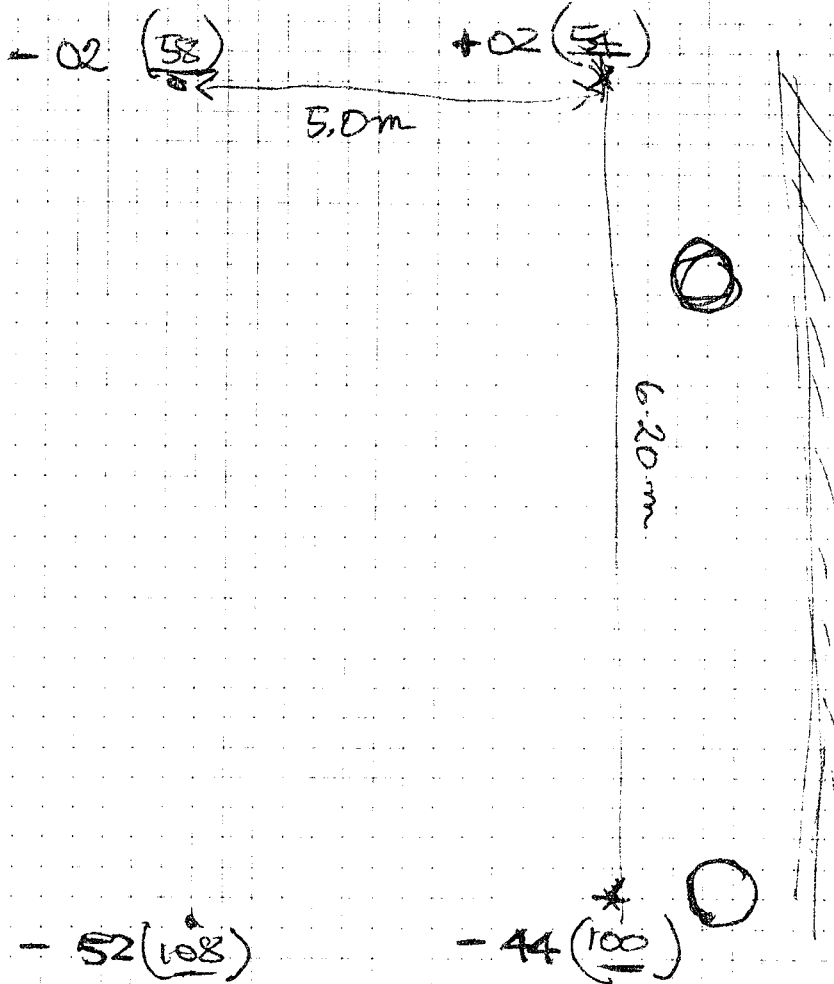
Two workers clean the area
by M-5, to M-8 and
and M-2 to O-2 in preparation
for excavation

Pizzica July 16

Group 1 five workers led
by Pacciani with clamper move
to Pizzica begin to remove
dirt which has washed from
banks into trench in just two
years.

We plan to begin excavation when
we have cleared to the old excavation
level. In the plan the top
blocks in the conglomerate will
be exposed in O-5 and N-6 are
seen in M-6. Here the excavation
was carried deeper than in M-7
and M-8. In M-8 the negative
of a block of the east wall.

aged out ^{grid in} squares
 K'-1 and the southern
 part of J'-1

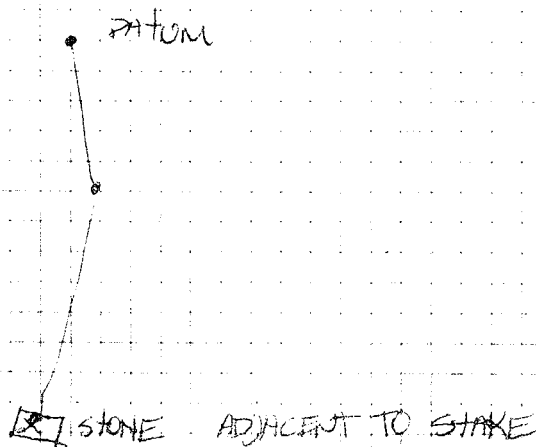


Instrument height 56 cms
 Set up over large conglomerate
 block in farmhouse founding NS
 Trench, highest part of knob
 to the west.

Taking level of intermediate
point at stake on the
canal area

Set up over central datum on the
hill.
Instrument height 88 cms

↗ 88	STAKES #	①	379
↗ 94		②	344
↗ 1.00		③	215



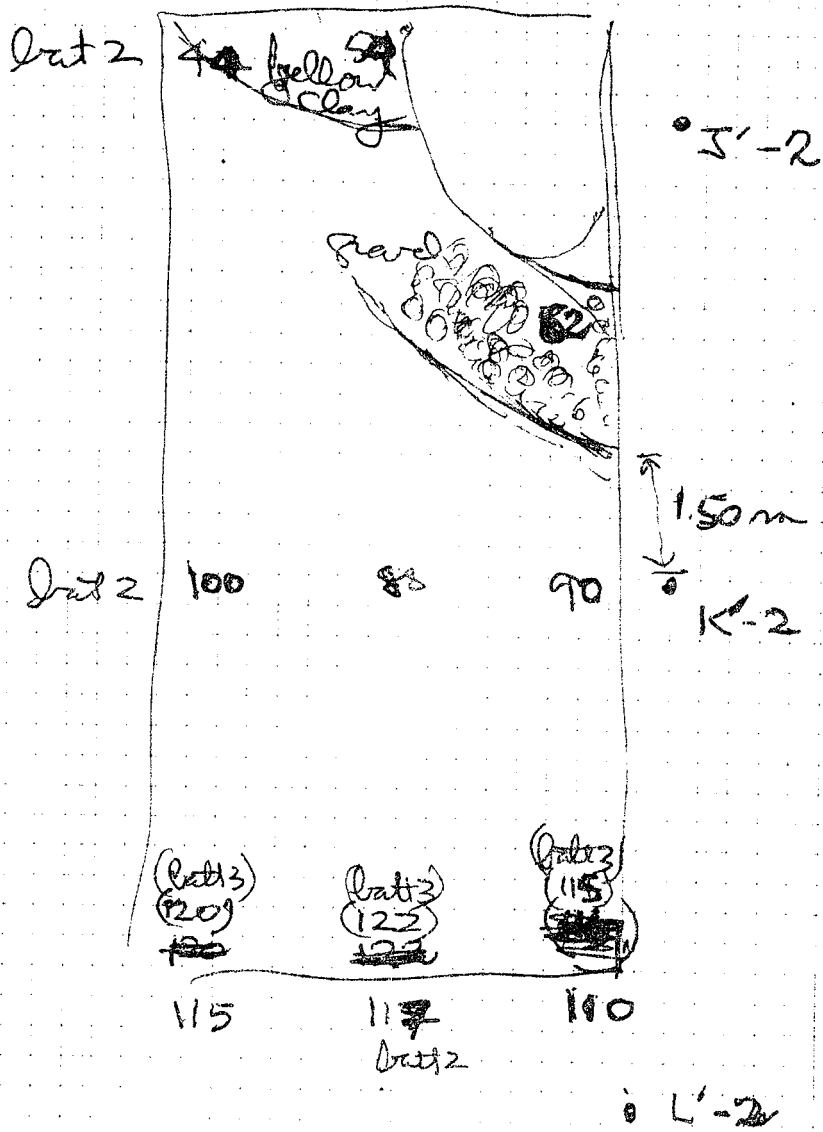
Batt 2 in K'-1 The soil is similar to that of Batt 1 in this ~~area~~ square on the East side of the trench ca. 150 to the north of K'-2 the gravel layer is clear. It makes a curve upward to the North west and tapers out on the west side of the trench.

The material found in the gravel is different and kept separately. There are a few fragments of Arctine. On the east side of the trench about a meter from the north face of boundary 6, the soil changes again. It is fine light brown, with few stones and some material. This is kept separately. The material from this level is heavily encrusted, white, and there are traces of burning.

In the extreme north end of the sounding, just below the north face of boundary 6 (1975) there is an area of yellow sandy soil with ~~no~~ no pebbles, full of tiles and grey ware plate in fragments.

[Fairly soon but not immediately decided to call this sounding A]
see July 25, 1980

~~1~~ The levels after completion of
 batt 2



Instrument height 55

July 18

Batt 3 Sparrow ca 5 cms. The earth
is very hard. Similar to previous
two batts at the south end, but
tiles begin to appear, larger ^{bold} stones
The soil color in the area of the gravel
at the bottom of batt 2 is 10YR 6/3
pale brown. Small gravel mixed with
sizeable fieldstones 6 cms or so in
length. This level peters out at northwest
end of trench. Area of yellow
clay 10YR 5/4 yellowish brown.

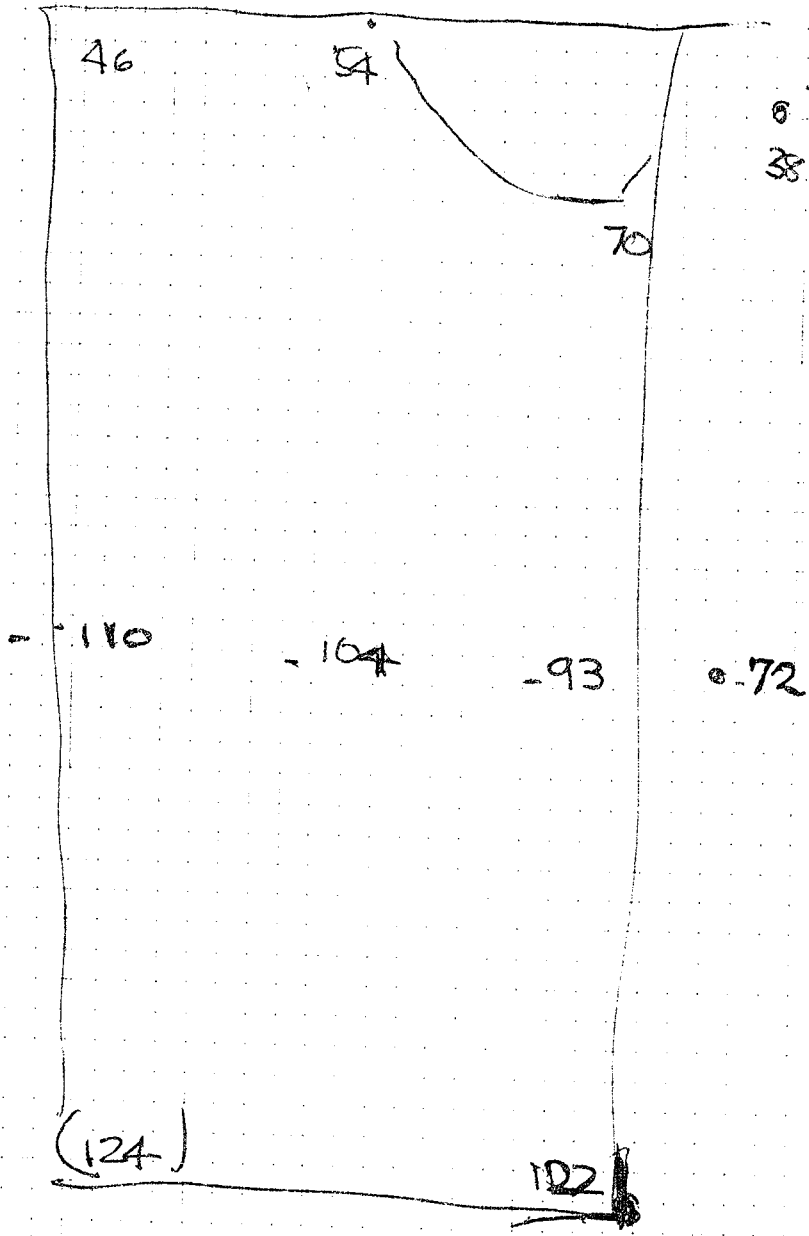
~~Just to south of square K'-1~~

At north end of square K'-1, a lot
of tile begins to show up. Some of
the larger pieces are saved.

The level of gravel corresponds to
that still visible in the banks flanking
the NS Trench (1976)

Batt 4. Decide to call this level 2
because of great quantity of broken
tile which covers the floor of the trench
fairly uniformly
work interrupted by rain
at point where excavations begins
to enter gravel in S'-1.
The earlier boundary 6 cleaned.

Levels taken after completion of
 Batt 3



Instrument height - 100
 55

July 21, 1980

Completion of batt 4. The gravel area completed. We began to pick it up in the NW corner of the trench, ~~near to water~~ about 2 m north of the K'-1 stake. It is less compact.

In the northeast corner of square J'-1, a small area of the clay north of the gravel excavated. The material kept separately.

It is decided to stop in the NW, however, short of the clay area.

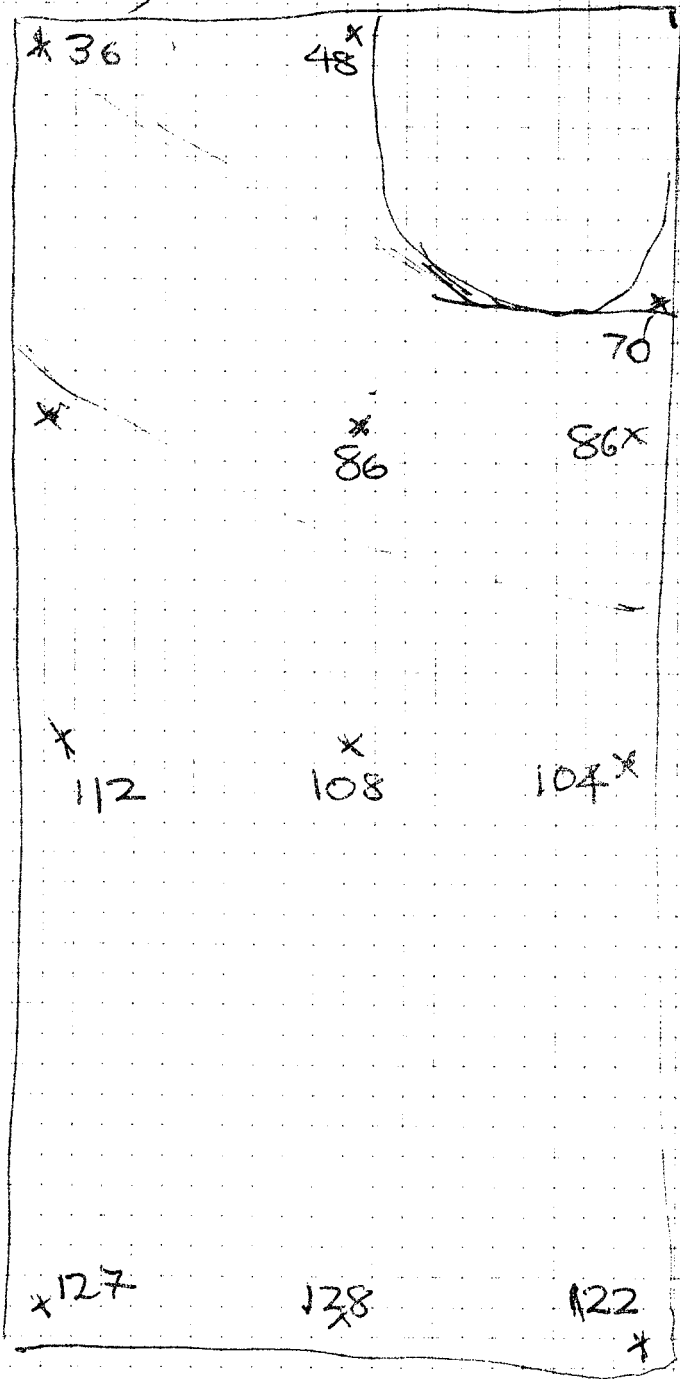
As can be seen from levels taken after completion of batt. The trench floor is fairly level. In the northwest corner we have to make adjustments so that the dumper can enter. This area involved is the northwest quadrant of J'-1.

The gravel area extends, in this batt area, further to the northwest, but also further to the south. The gravel floor on the Eastern side of Sounding A begins opposite stake K'-2. This is about 1.5 to 1.7 m further south than our

it was for batt 3. The decision about where gravel begins is fairly subjective, so some degree of wear is to be expected.

Some of the clay in NW corner of Soudby had to be cut out for treadlumper ramp. This material bagged separately. It is clear from this ~~soil~~ soil has proportionately a lot of ceramic material, fine ware as well as tiles.

Level after ~~test~~ but 4 complete
 (July 27, 1980)



Instrument height spans

K-1-2

Batt 5.

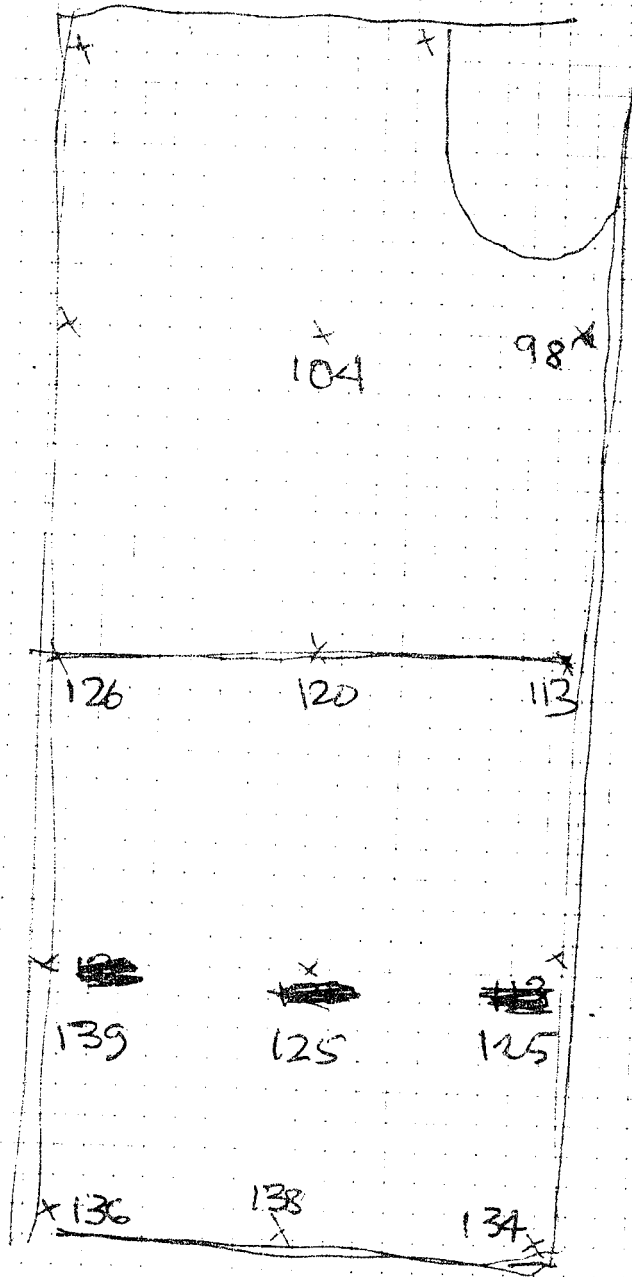
At south end of K'-1 where work began on this batt, a layer of larger stones is apparent at the bottom of the trench. It is decided to hold to the level of this batt and clean it carefully at the completion of the batt. The major concentrations on the south seem to be in center of trench.

Color of soil is 10YR 5A yellowish brown. There is a lot of sand. Tiles are still showing up, in quantity.

As noted above gravel layers extend to the K'-2 on south side of trench. From now on collect material ~~from~~ from square K'-1 separately that from J'-1, will be divided between that which is not gravel and that which is gravel, that which is clay with gravel.

East side of J'-1 very fine gravel appears south of the deep cut in sounding 6 (1975). Immediately south of the cut on the east is clay with some material (as opposed to the clean

Levels after batt 5



~~J-2~~

~~K-2~~

~~L-2~~

Instrument height 54cm

Exposed in the deep cut) This is about 30 cm wide in N-S direction and extends from east side of the trench about 120 cm to the west. ~~It~~ It contains some traces of burned wood which line up with the direction of those found in 1976 (See 1976 notebook). The fine gravel begins to be ~~found~~ and extends to ca. a meter north of Stake K'-2. Photographed in color + BW.

Buttc

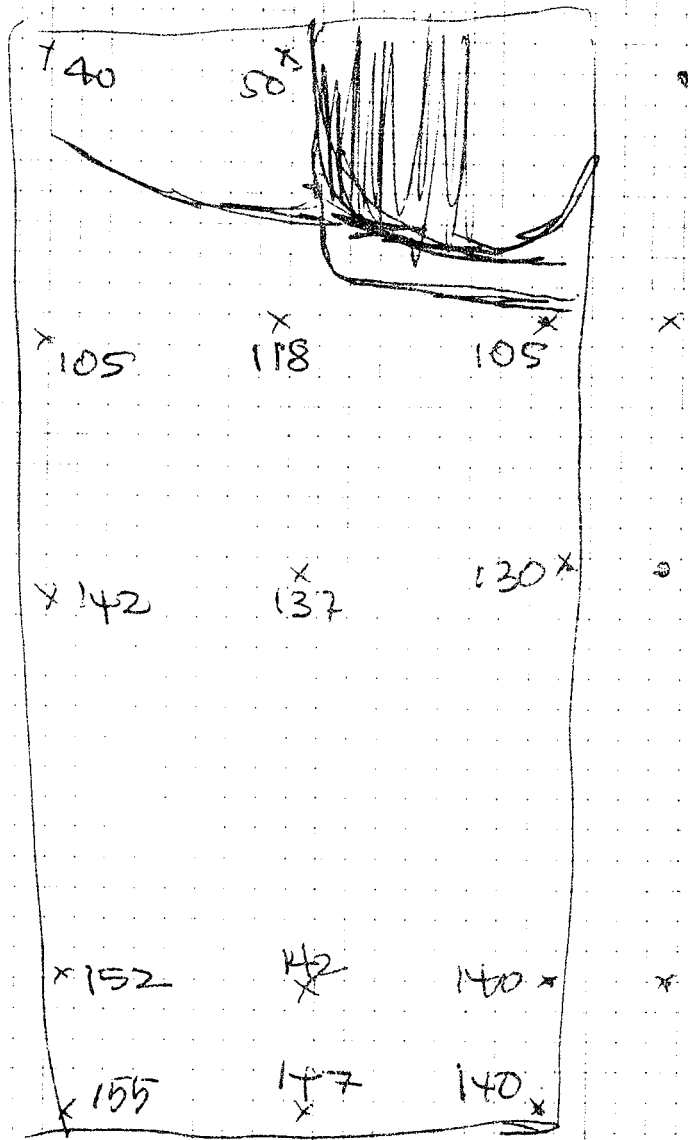
Decide to call this level three as there is a change from tile ~~to~~ ~~tile~~ ~~with~~ with large quantities of rock, large field stones.

Noted that the West side of the trench in K'-1 there are very few tiles if any, no stones. On the east side instead a second thick layer of tiles and stones. As a result the east floor of the trench is at a higher level.

2m north of Stake K'-2

At about ~~Point 1~~ in J'-1, east half, the thick gravel with large stones changes to finer, thinner gravel. The material is collected separately. On the west side of the trench very sparse gravel begins at about the same point. Lots of large tile fragments still. This material is separated.

Levels after the completion of batt 6



Instrument height 54 cms

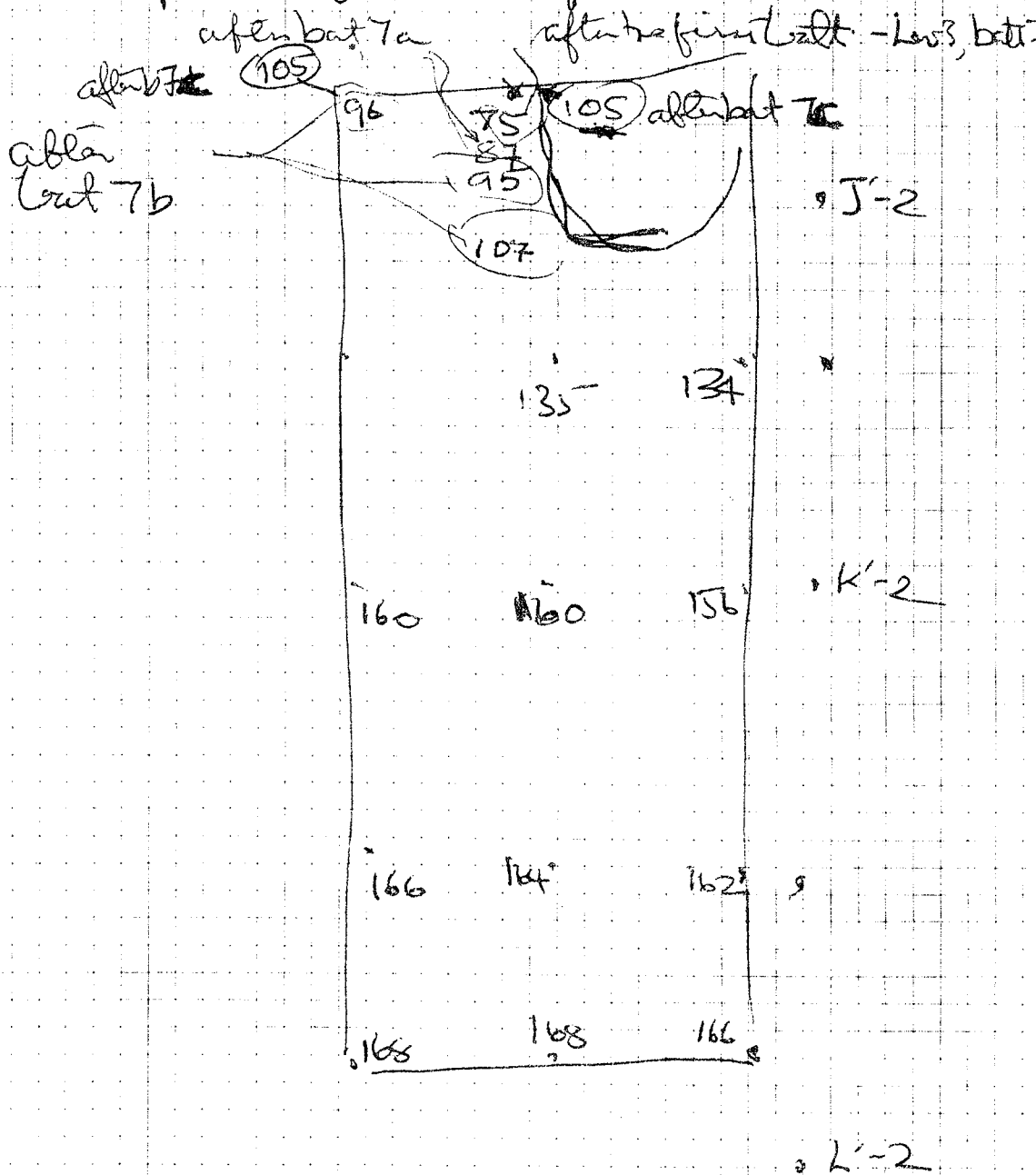
July 22

bat 7. - No major differences between this and previous, except that the large gravel extends down into K'-1. There is no more fine gravel in J'-1 SE corner, but the coarse stuff appears again.

We decide to remove the clay in the NE quadrant of J'-1 (recorded as from level 3, bat 7 !!!) which was not touched in the previous battute. The material, naturally, is collected separately. The same will be done for the NW quadrant, ~~but~~ It will simplify matters to carry the entire trench to the same level but simply collect the material separately. The exigencies of creating a ramp for the dumper but also nothing to be gained by leaving it.

The clay in I'-1 and J'-1 in the west corner is taken down in regular battute. The first is full of material, clay. The second

levels after completion of batt 7



is gravel with sparse material
We'll call the second batt. Lev 3, batt 7c
JK 1, I'-1 NW.

The earth is soft and sandy with
a lot of tiles mixed in
Color 7.5YR 4/4 brown.

The third separate batt. in NW
corner of trench aimed at bringing
the whole trench into ~~one~~ ^{one} plane
called Lev 3, batt 7b. The path will
be batt 7c and so forth.

Lev 3 batt 7b light yellow brown soil
as in preceding into lots of gravel
a fair amount of ceramic material
The earth is a darker color to the
extreme west edge of the trench.

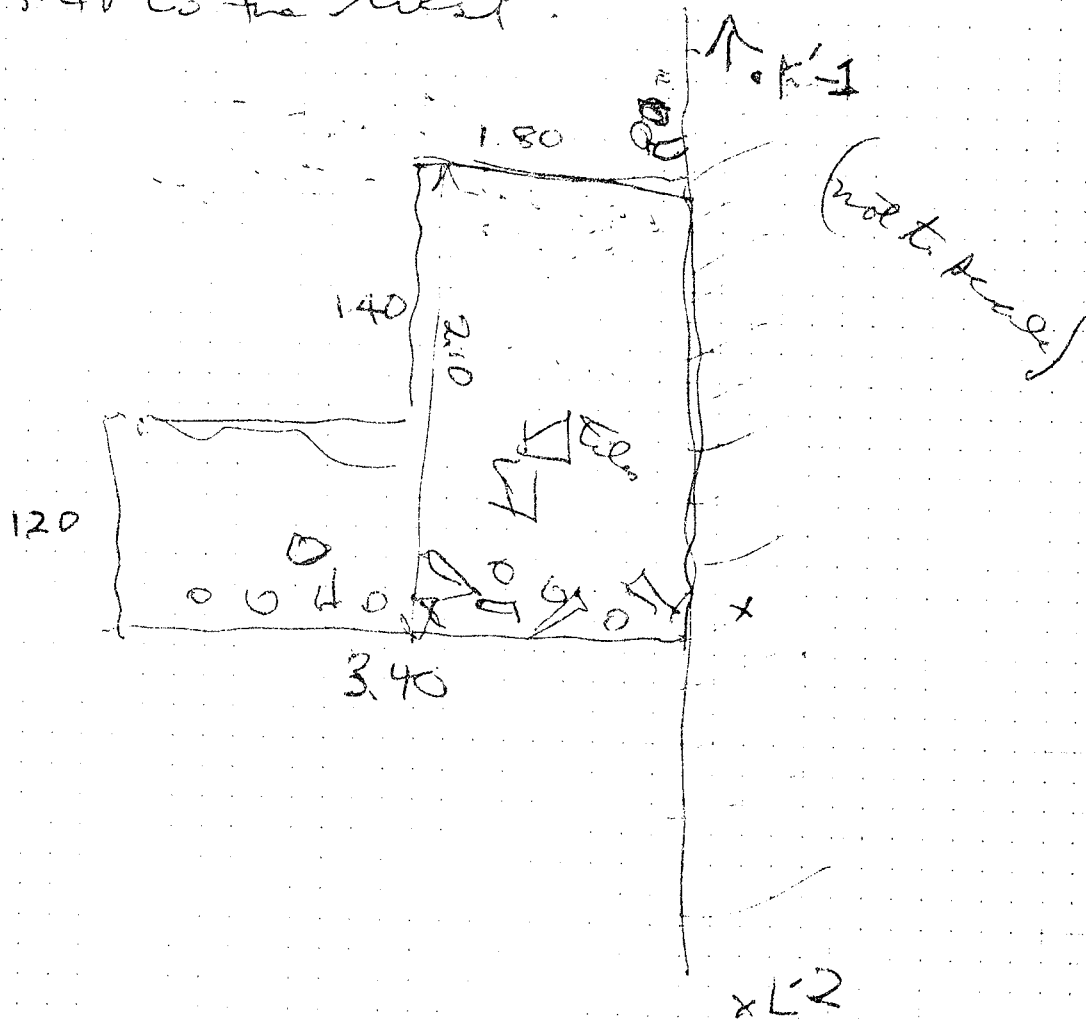
In Lev 3 batt 7c, and Lev 3 batt 7d
we separate the material which
comes from the yellow clay near
the west edge of the deep 1975 cut.
That from the west is in the darker
soil.

July 23,

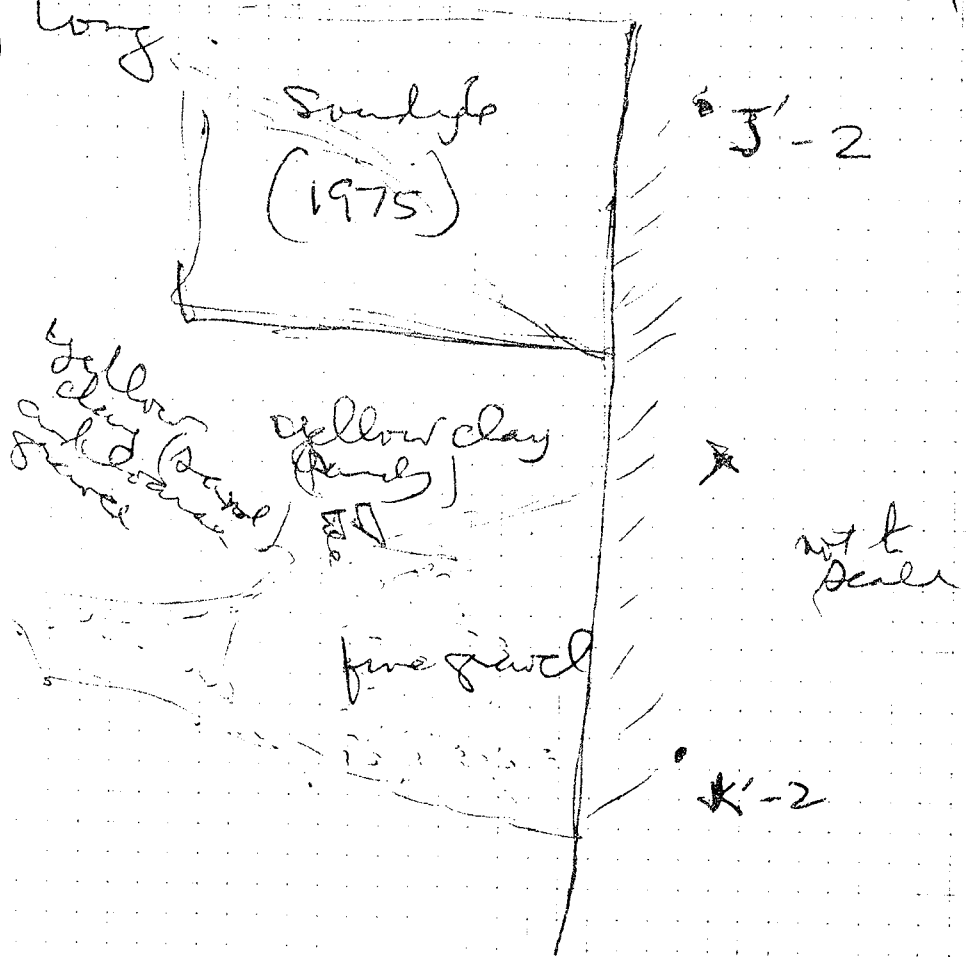
lev 3, ball 8

began this morning at 7⁰⁰

At 2.50 m north of L-2 there is a large area of field stones with an approximately rectangular form. It disappears under the east bank. ~~The~~ ^{It is} aligned with the north wall of the north wall of the trench N-S 1.60. It extends 3.40 to the west.



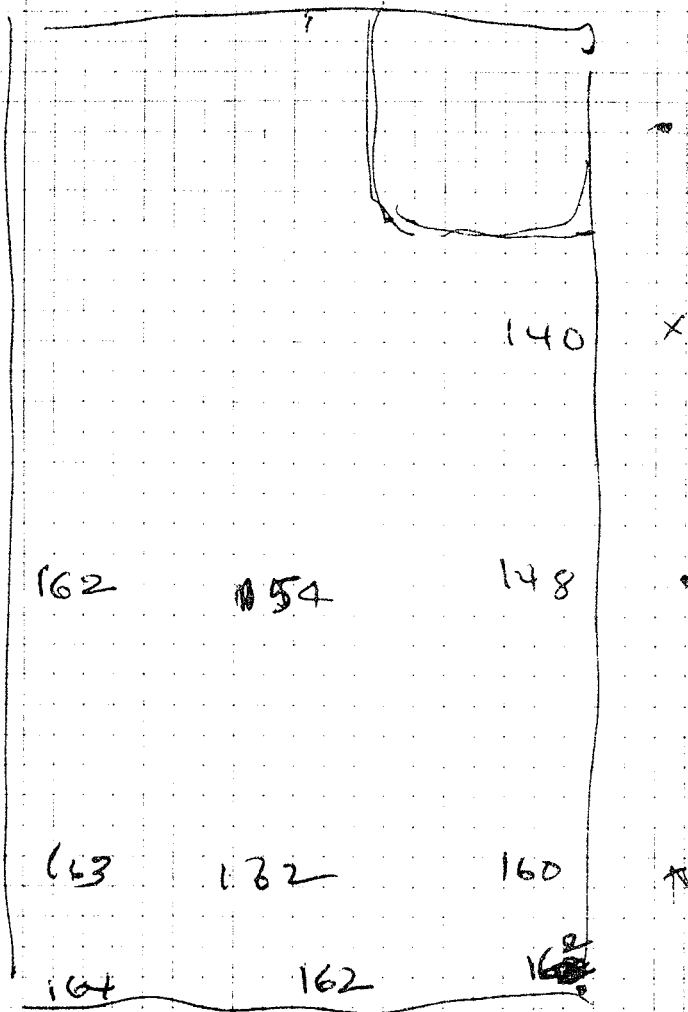
K'-1 is collected in one box.
 The gravel areas in J'-1 are
 divided into two. East and
 West parts. The gravel is
 primarily latite in texture.
 On the east to coarse gravel changes
 a fine about a meter to the south
 of the in place intermediate between
 J'-2 and K'-2. This does not last
 very long.



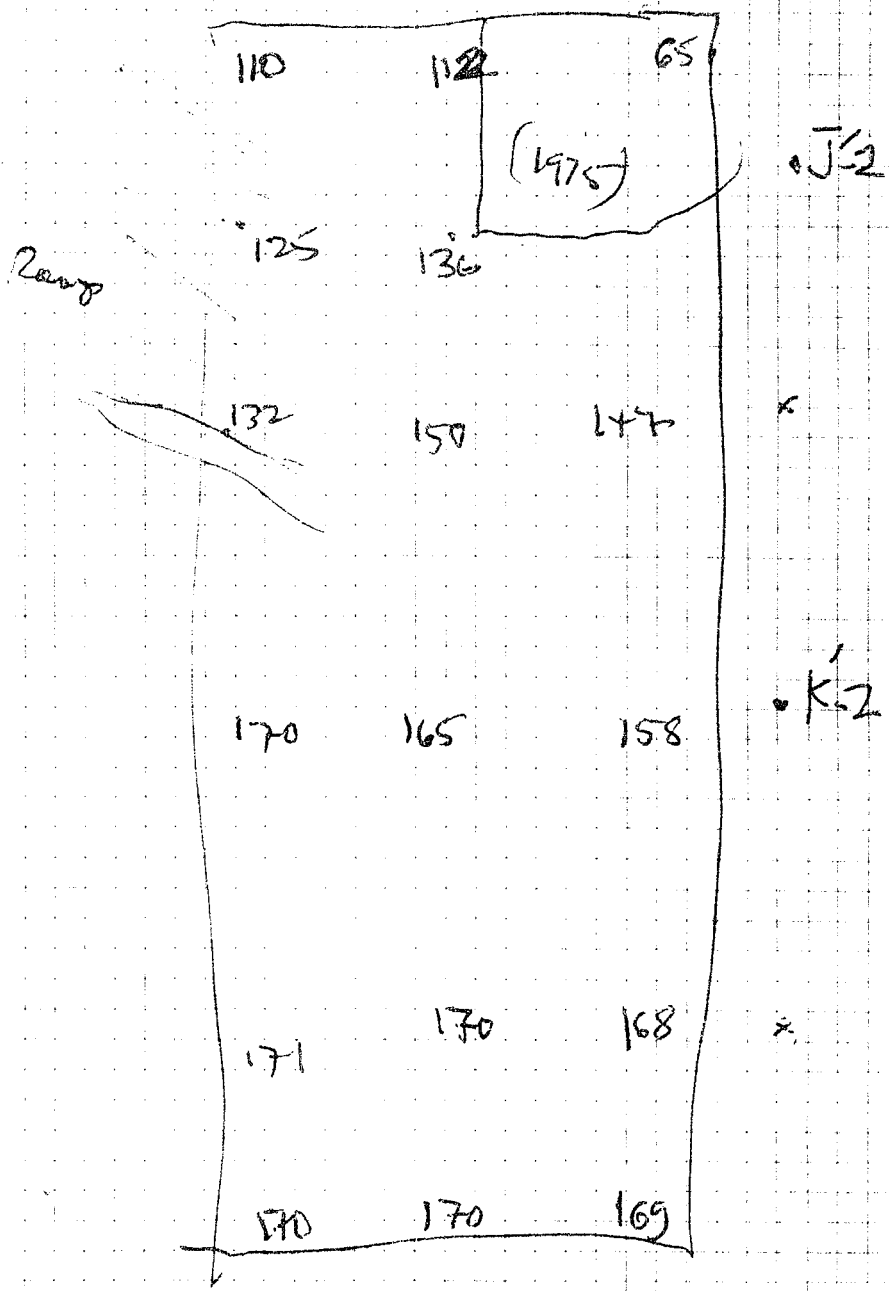
The the north of the fine gravel
the yellow clay on the extreme
east, which is mixed with coarse
gravel on toward the middle of
the trench. In the north east
corner we encounter the sandy
bank of yellow virgin clay like
that excavating in Boundary 6 (1975)
In fact, it is the extension of that.
At the interface between the clay
and the virgin bank there are
some slight traces of ~~burned~~
carbonized wood in the trench
floor.

The situation in J'-I west
side is identical to that in the
previous ~~part~~ but. This gravel,
large stones, and dirty gray
color. The soil is a slightly dirtier
yellow and contains small gravel and
some larger pieces. The stones thin out
considerably at the level of Stake I'-2.
Another possible fragment of the relief
vessel in gray ware found yesterday
in about the same location.
Some pure yellow clay near both
wall of Boundary 6 (1975)

Levels after Completion of base Instrumentation Schem.



July 24, 1980
Instrument height 57



After bat 8

• K-2

bat 8~~4~~ - This bottle belongs
to the north of station K'-2
The idea is to level the trench
on the east side the soil is a
dusty grey at first, it changes to
yellow clay as we approach the
bank cut into, in 1975. We
reach with this bat the level of
the bottom of the 1975 cut.
On the west side of the trench the
soil is yellow.

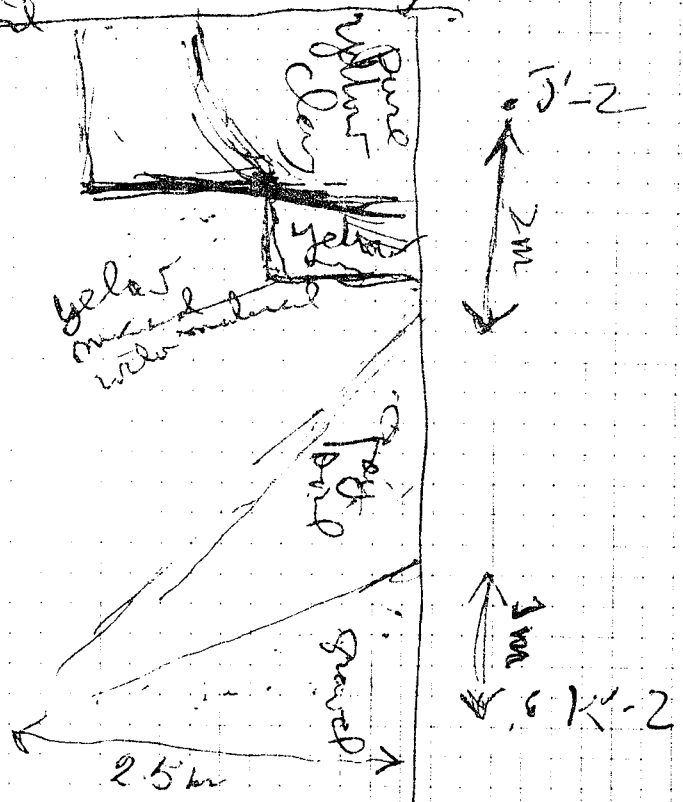
On the east side we are
just below the diagonal line
burned earth which was very
clear in the N-S trench (1976)
There are just a few flecks of
burned wood evident in the
yellow clay. From under this
comes a fair amount of material.
~~at~~ Grey ware bases of plates
~~thin ware~~

The darker grey soil on the east
covers a limited area of the trench
between the end of the fine gravel
to the north of K'-2 and
the yellow clay. This discoloration

was probably caused by the mixing of charred wood.

Everything that ~~came~~ out to the south of the dark earth was ~~found~~ above the burned level. Everything to the north, under it.

Thus the yellow soil ^{of this part} ~~is~~ ~~under~~ contains material which was deposited before the burned layer. This applies to the east side of the trench. The West is a different story. There is no clear trace of the burning, or of the darker soil.

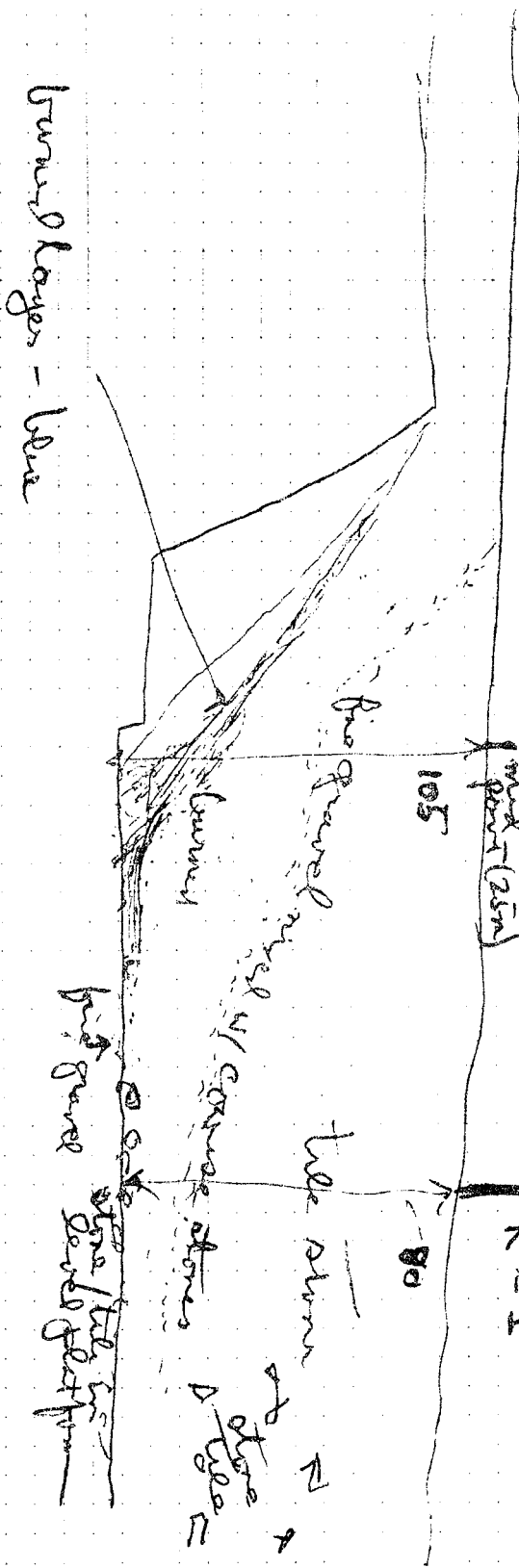


On the western side of the trench we are at a slightly higher level to bring us into line with east half. We have to cut through tiles.

[The large area of fieldstone and tile in K'-I, which has a regular outline (see above) is very level (see above) and is perfectly even with the shelf of a gravel bath tub left on the west side of the N-S trench in 1976. It seems clear ^{now} that this was a deliberately made level working space. And now the problem is to find out how it relates to what we find in J'-I to the north — i.e. to the sloping burned layer and gravel layers above, and the yellow clay mixed with material below.]

Partial Melik section ~~at~~ after
 at 8A, in J-1

about knee & breadth between
 Banking A and B - stream (not scale)



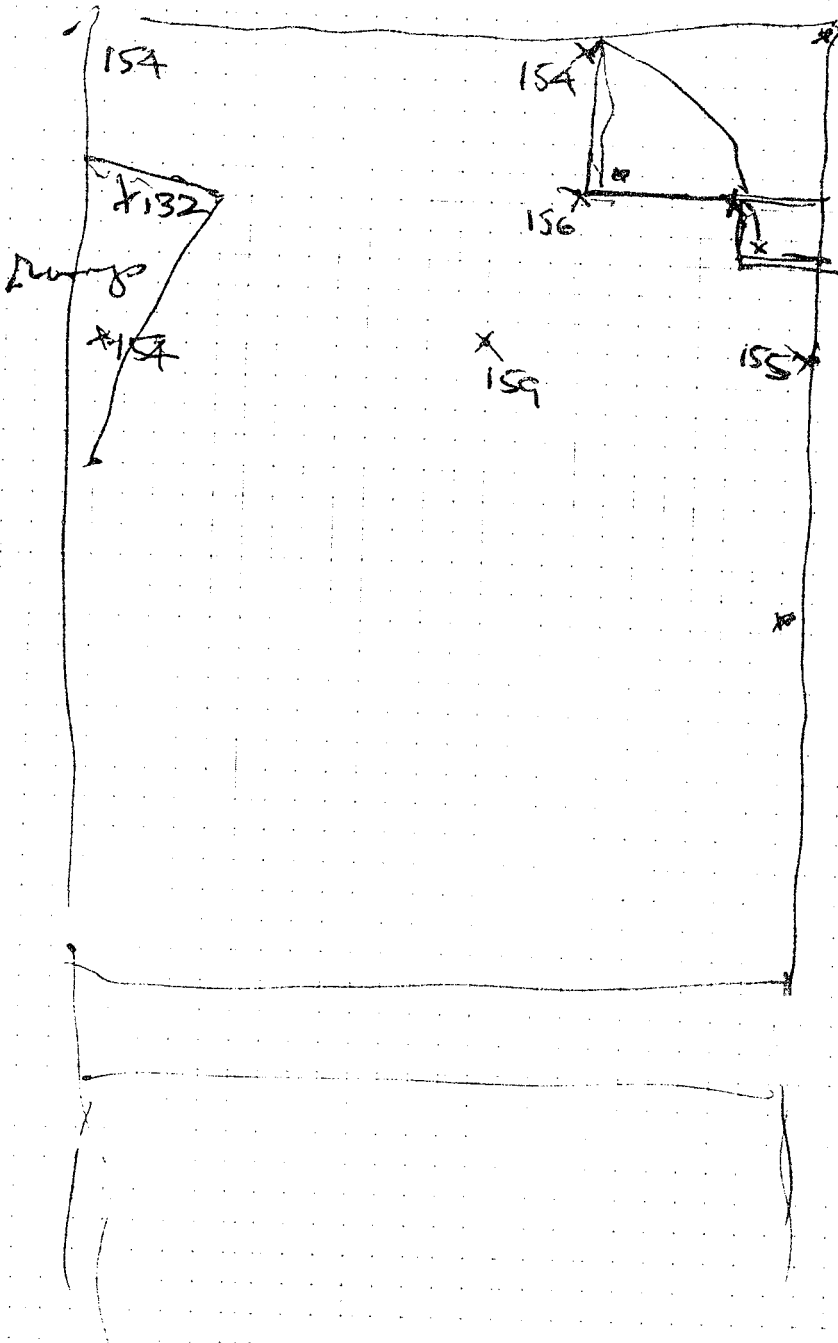
On the west side of the trench, once under the level of tiles noted above (July 24) the soil is yellow brown clay with little gravel or materials. We have a slope down to west on the west side of the trench as well as to the south. The material which comes out of the yellow clay ~~the~~ soil on the west side of trench is under the tiles which extend down to and ~~rest~~ rest on top of the layer of the fieldstone tile pavement.

The ramp is removed. The material collected separately that which comes from gravel which is from layer which covered fieldstone tile pavement from the yellow brown clay which ~~is~~ is in contact with the virgin clay and should be associated with the ~~pres~~ parent fill (sandstone).

There are a lot of large fragments
of grey ware imbedded in the
floor of the trench after bat 8a
This is the yellow brown clay
Among them is a moulded fragment
like that found in the same location
~~at bat 8~~ on July 22. which was
considered a special find

So will this : Location 40 cms
South of N face of sanding and 1 m to
~~to~~ the east of the west wall of
Sound A. The level is that of
the floor of trench (see next page)

Levels after completion
of lat 8a



• J-2

• adjacent
to 200

• K-2

• L-2

In the ~~North~~ West corner of the trench
a large concentration of material
pottery. It is surrounded by
soil with fleck of carbonized wood
distinct from the yellow clay
above it and visible in the
W. trench wall. It seems
that the layer of burned stuff
follows the slope over the clay

The material consists of large
fragments of pottery mixed with gravel
the way they are ruptured and
grouped suggests strongly that
they were washed at least
some distance. There is a diagonal
line of more nearly complete vessels

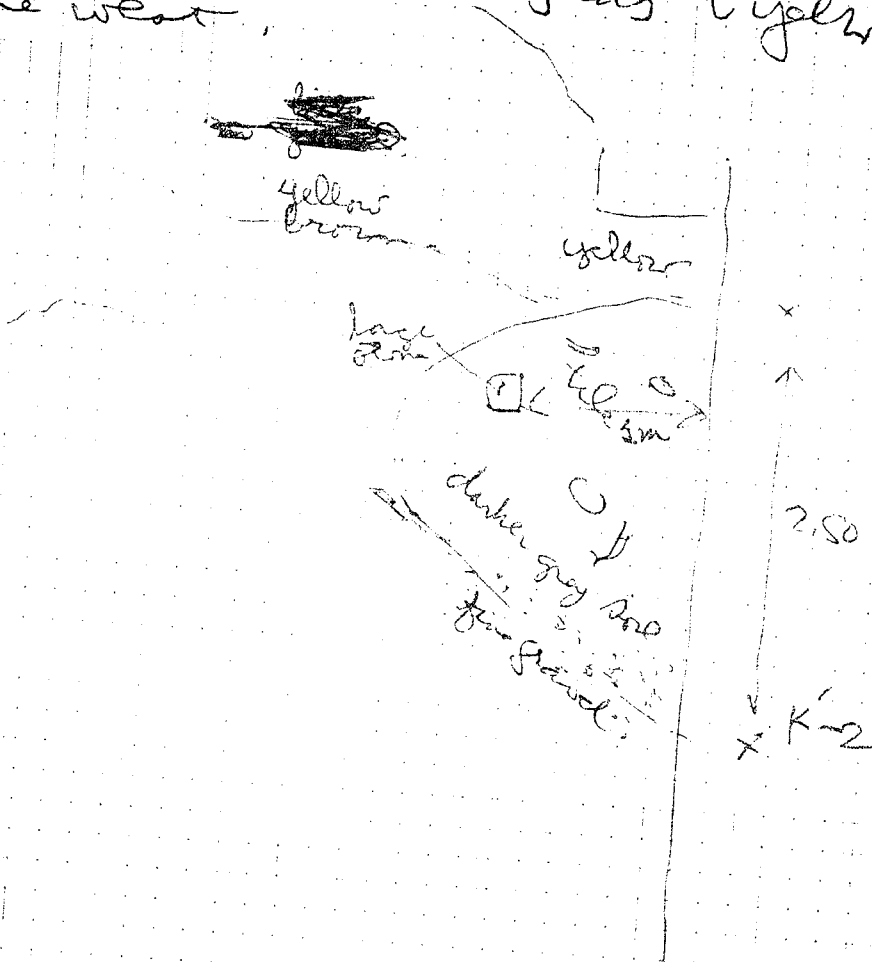
Large ~~open~~ open dish with
three tragic washers used as
feet. This vessel was ruptured
with the heads on top most of the
pieces were there together but it
was clearly broken by the pressure
of the earth

Nearly complete oil jar along
the same line but slightly to the south

↓
This section is
North of
the
trench

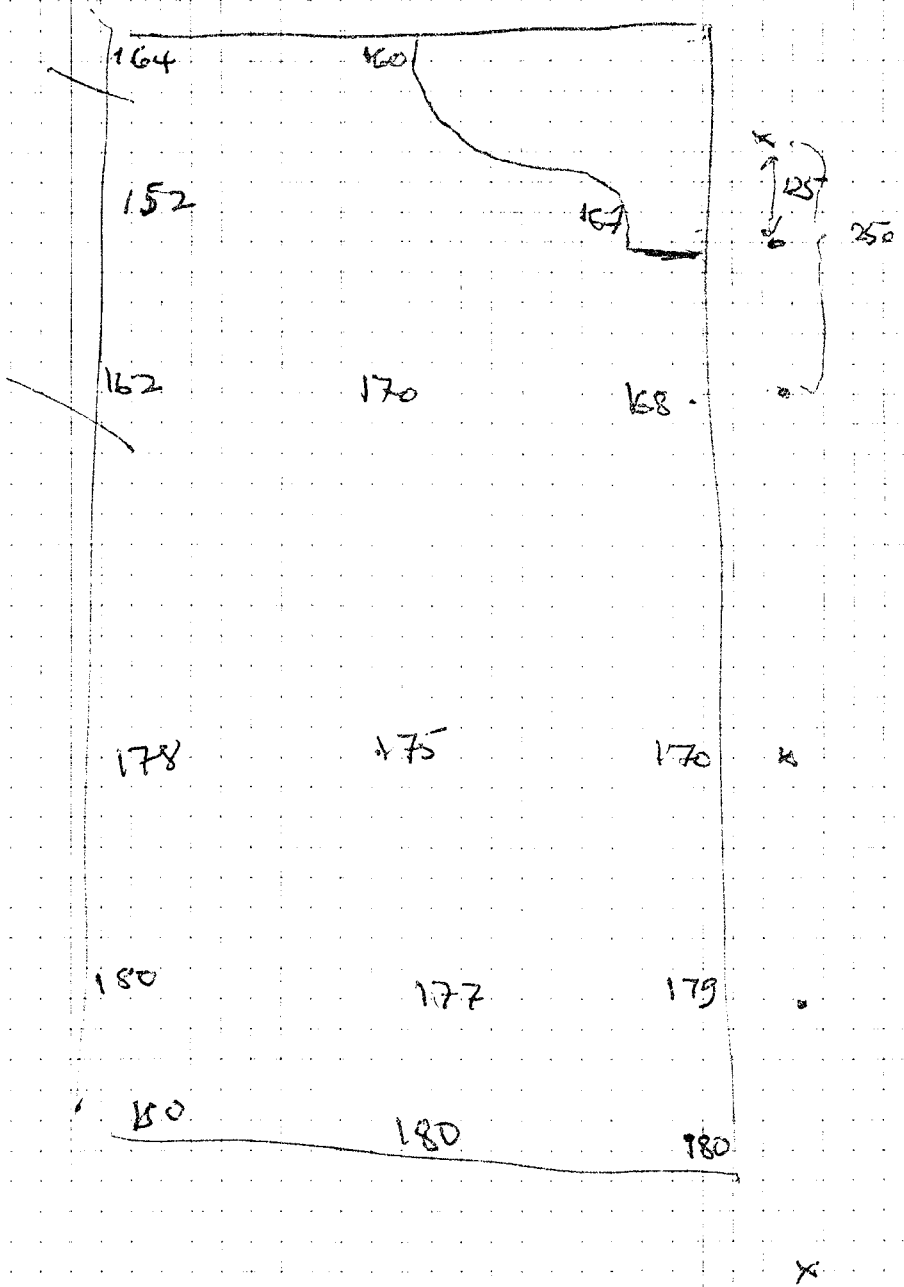
lev 4 b.9

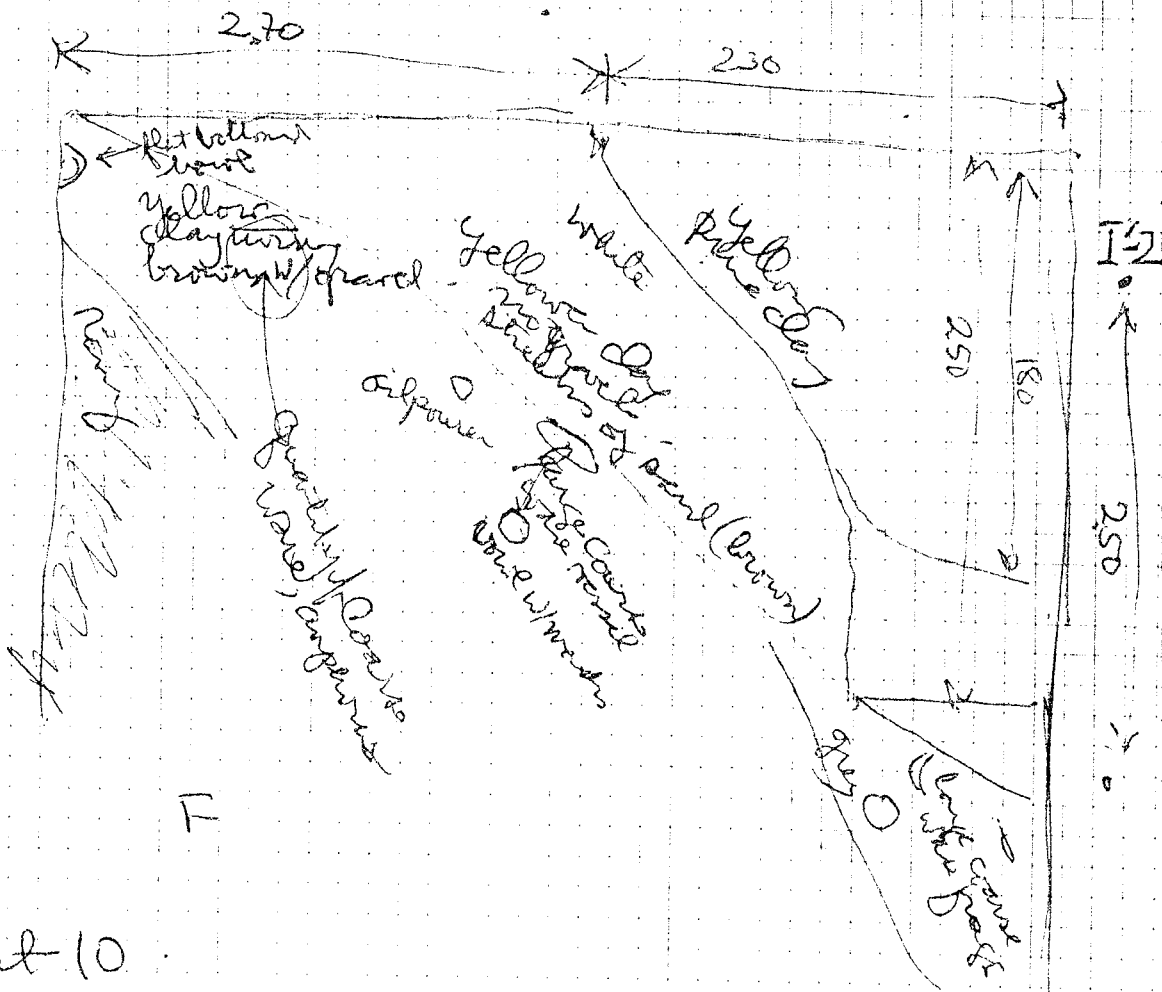
Decided to call this next
but lev 4 because we go below the
tile-fieldstone "partway" in K'-1.
Separate box for all material
in K'-1, along a line ca 1m
to the south of stake K'-2. Tile
and fieldstone. To the north gravel
The soil is gray brown on the East
side but turns rapidly to yellow
on the west.



Levels after the completion of bat g

Instrument height 59





bat 10

K'-1 The large stones recovered
 bat 9 are left in place, the smaller
 ones removed

jaw of a boar w/ tusk

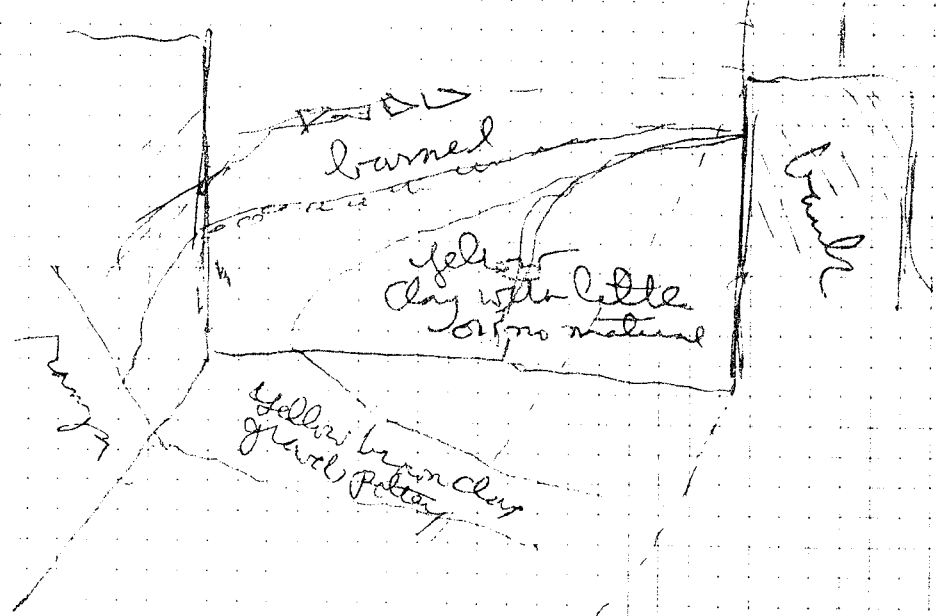
Some of the larger blocks seen to
 be a line, and may form a wall

I'-1. Roberts carefully cleaned
 around large coarse stone
 embedded in the floor of the
 trench after bat 9. A few

Centimeters lower the gray clay appears. The sand and yellow clay comes away from D4. In between is a layer of fine ~~pebbles~~ pebbles and one fragment of material. This could be the actual face of the clay used for pottery making. This is what is happening in a small area just to the south of north ~~face~~ wall of the trench (North wall of sampling 6)

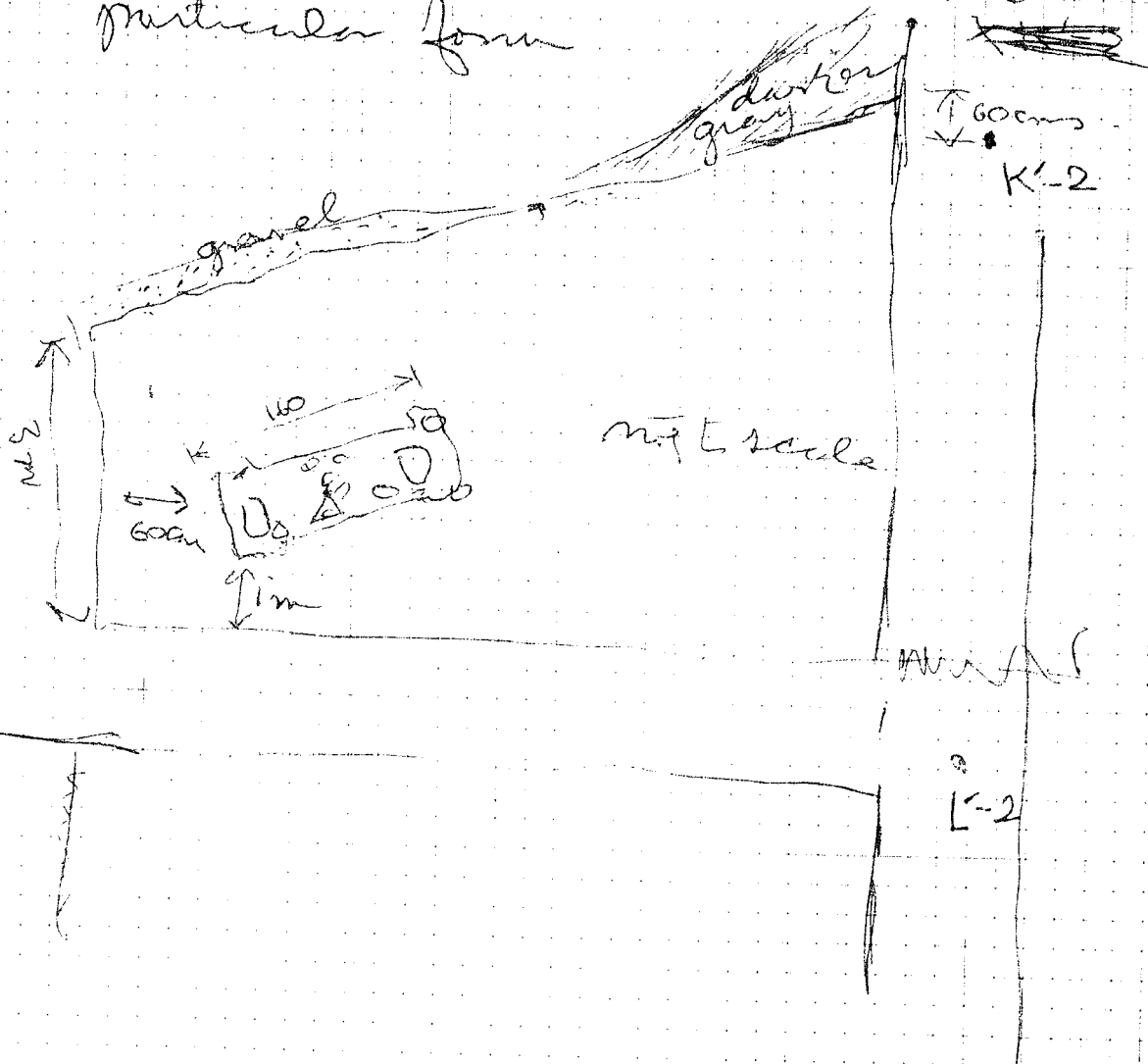
(not to scale)

North face of trench



It seems clear that the banks of yellow clay and sand with one material turns into the trench wall about a meter to the east of the NW corner of the boundary. So does the material on the interface in the brown yellow clay with gravel.

In K'-1 The "wall" has a particular form



The gravel layer continues to turn up on the west side of the trench to the west of the darker grey clay with much material in it. It can now be understood as resulting from the curvature of the slope of the N-West. The darker clay occurs ~~is~~ immediately over the virgin clay and above it the gravel layer. In the N-S bank this is evident.

~~Deposition~~
The gravel flowed down over the darker clay with material. Since the hillside curves, the darker clay is found further to the north on the west side of the trench and as a result the gravel is further to north also. So the gravel layer on the west side of the trench ^{is} corresponds to the gravel layer on the east side as far as the time of deposit is concerned but it is displaced toward the north.

The Area of dark clay has
much coarse ware and animal
bones; quite a lot of grey ware
Cooking ware with carbon
exterior. There are chunks of
iron slag.

Batt 11 -

K' - 1 Grey brown soil with
lots of tile. Not so much stone.
Found base of a redware bowl signed
by RAS1 just to the north of the
stone feature encountered in SW
corner of the sondy in Batt 10
ca 3 m to north of south wall of
trench and 1.40 meter to the east
of west wall.

It is important to know how this
surface relates to the Ashy slope
and the interface between the
sand and clay and the darker
clay with material.

I' - 1. NW corner of the trench
a major concentration of animal
enclosures by Paracerasauri