

BLAZZO SCUOLA



- PIZZICA 1978 -
NOTEBOOK # III
FIELD NOTES
pp. 81 - 125

Olive Gray 54. 5/2 moist
Fine sandy clay w/ virtually
no stones or pebbles in
matrix.

900
65250

6/10

6280

900

JULY 13, 1978

M-5 Clearing of dirt below large blocks @ West end of sq. PZ-78-518 PL

The two large blocks at the west end of the sq. excav. in 1977 were removed along w/ the dirt below them. The soil supporting these blocks was below the gravel layer wh. has been assoc. w/ the first tile concentration in this area. Prof. Carter has observed the high density of gravel north of the blocks where the flow of water backed up against the blocks. The material here consisted of a few coarseware sherds and two black glaze sherds. Notable among the finds was a male Tarentine type figurine head. There was also ^{3 other} small ~~non~~ nondescript frags fr. a figurine and small piece metal prob. a nail, 0.055 in. PZ-78-520T (all frags) PZ-78-519M

-5 NOTE ON LEVELS

Excavation has been reopened in this square around the group of blocks and tiles exposed in 1977. All the area is in Level 3, the area below the first tile conc. + the gravel layer assoc. w/ it, however the depth of level 3 varies throughout the square. The eastern 0.60-0.70m of the square is right at the surface of the gravel layer, while the gravel layer slopes up to a maximum of 0.85m. above the floor of the square in its NW corner. The floor of the sq on the average is 0.30-0.40 m. below the gravel layer. The eastern section of the sq at the level was excav. separately in a shallow batt. and will be designated Level 3, Batt. A Area of gravel layer. The rest of the work throughout the square will begin at level 3, Batt. 1.

-5 Level 3, BATT. A Area of the gravel layer. PZ-78-526 PL See above for description of batt. Relatively high quantity of material for the small area excav. Most sherds were coarseware w/ a few pieces of black glaze. There was one grayware sherd and ~~found~~ small statuettes frags, and a piece of iron, 0.047 in. l. PZ-78-523T PZ-78-522M

Most notable find was fragment of terracotta revetment w/ a meander and star design. Prof. Carter has likened it to the revetments found at San Diego.



PZ-78-521T

11

M¹-6, -7, -8 level 3, Batt. 1

PZ-78.529 PL (2 bags)

Work begun in this area yesterday continued. The area under excavation is a strip 2.70m. wide running west-east. It is bounded by the area of the old irrigation canal to the north, the long ~~west~~ baulk on the N-axis to the south, and the 977 sounding in M¹-6. The material ~~will~~ for the entire area will be kept together unless a circumstance arises calling for separation. Soil remains as described yesterday.

M¹-5 Level 3, Batt. 1

PZ-78.524 PL

For discussion of level see above. Soil is a grayish brown clay, Munsell 2.5Y 5/2 moist, with streaks of red sand + other * sand present in the matrix. Scattered small stones and ~~other~~ other sand are also in the matrix in small quantities. The excavation in this area is working around the large group of blocks and tiles in the NE corner of the square. Cleaning around this area yesterday revealed that this was laid by man rather than simply a fall of material for the hill. Fairly large amount of material present is predominately ~~black glaze~~ coarseware sherds w/ some black glaze ware. A small black glaze bowl, 0.03 m. h., was found in three pieces. The breaks are old and apart from a chipped base it is complete. Numerous statuette fragments were in this level. Most are nondescript, however there is one frag. w/ an amphora on it and three small heads. PZ-78.528 T

It should be noted that the difference in color between the soil of M¹-5 and M¹-6, 7, 8 is striking. The soil in M¹-5 is much lighter in color than ~~the area to the east~~ ^{the area to the east}, see above for indiv. discussion of soils. There is also a significant difference betw. the material of these areas. The mat. of M¹-5 is clearly Greek in character, whereas the finds from M¹-6, 7, 8 ~~are Roman~~ appear to be Roman. Although this ident. can not be certain, the heavy coarseware frags and tiles in the area certainly look Roman to this observer. This batt. has revealed further lower courses to the group of blocks. These lower courses are also in the form of large blocks, there can be no doubt that they were laid by human hands. Photographs taken

2 STAT FRAGS PULLED FROM 524 PL → PZ-78.525 T

on sf.
 variety of upturned edges and a little of what may be a stamp
 P2.78.531T - large tile frag w/recess for filling
 P2.78.532T - large thick flat unidentifiable object
 common to me. Several of the frags also covered; include the fls
 (concrete) shards on the thick walled orange variety which implies
 concrete shards except for one black glaz frag. and for some
 P2.78.5
 1.40m. away from the east end of 11-8 the material was all
 excav in N-7.8+0-7.8 the trench in this area was stopped
 with the material present relative to the area. 40 in the

M1-6-7-8 level 3, Batt 1
 P2.78.529PL (2 bags) [50 pgs page]
 P2.78.540SS
 A few masonry fragments have also been found in this area. The
 largest of the frags, within a block of surrounding earth also
 noted, the other frags, were too small

P2.78.536T - Frag, verte cup
 B.C. lid
 P2.78.537T - Frag, verte cup
 P2.78.538T - Verte deposit
 (complete frags, bowls)
 P2.78.539T - 32 steel frags



P2.78.535T
 0.045

the verte deposit near the large blocks. P2.78.534B - 1 bone frag
 visible. A fragment of a geyser outcrop was found just east of
 it present three small verte cups under a stone on all that is
 of the area. ~~It is not~~ The deposit exact nature is not yet clear
 from the west end of the area and 1.70m from the north end
 from the NW corner. A small verte deposit had appeared 1.25m
 red sand are also unrecognizably present on work proceeds east
 block of geyser brown, Munsell 5Y 5/3 med. drab of
 content of the soil increases and is soil is slightly different
 of the area. No work proceeds from the NW corner the clay
 (two sandy soil is especially present noticeable in the NW
 geyser brown to brown, Munsell 10YR 5/2 - 5/3 med. drab
 soil easily breaks up in your hand. The color of the soil is
 a very high cone of sand. The sand content is as high that
 base of the soil is still clearly clay, the matrix now contains
 The soil has changed from the previous day. Although the

M1-5 level 3, Batt. 2
 P2.78.533PL

FINDINGS!

M¹-5, Level 3, Batt 2.

In addition to the above finds there was a mixture of coarseware and black glaze sherds including a very fine black glaze lid. There were also numerous figurine frags including a satyr head, an archaic type head, a couple of other heads, the head of a horse fr. a bearded dead pugil, the lower abdomen & legs of a nude male fig, ^{fronthead} and various nondescript sherds. There were other frags of votive vessels in the material in addition to the vessels in the votive deposit.

STRATIGRAPHIC LEVELS SIGHTED FROM M¹-4 @ -7.70m.

M¹-5 Level 3, Batt 1

- NW of blocks ag. N. Bank. — 8.825m.
- SW corner — 8.805m.
- Center — 8.745m.
- SE corner — 8.705m.

M¹-6, -7, -8 Level 3, Batt 1

- West end, center — 8.585m.
- M¹-6 SE corner — 8.585m.
- M¹-7 Center — 8.705m.
- " SE corner — 8.665m.
- M¹-8 Center E. end — 8.615m.

-6, -7, -8 Level 3, Batt 2

PZ. 78.541 PL

Soil in texture and appearance remains unchanged from Batt. 1. Red sand at breaks, other sand & small gravel, and white concretions present w/in a clay matrix. Whereas ~~previously~~ in Batt 1 I identify the soil color as dark gray Munsell 10YR 4/2 moist, this soil appears to be more dark grayish brown Munsell 10YR 4/2 moist. The difference may be due to a subtle change in the soil or more probably due to a lack of consistency in my own perception of color. Only a small area was opened today. The finds continue to be almost all large coarseware frags. Two black glaze frags and several grayware frags along w/ some bones were also among the material.

PZ. 78.542B

(4)

STRATIGRAPHIC LEVELS SIGHTED FROM M¹⁻⁴ @ -7.70m.

M¹⁻⁵ Level 3, Batt. 2

NW of blocks ag. al. Baulk	- 8.905
SW corner	- 8.985
Votive deposit, see above	- 8.965
Center	- 9.005
SE corner	- 9.055

M¹⁻⁵ Level 3, Batt. 2.

Votive dep. consisted of 3 small votive cups or bowls, photographed + removed. [See 2 pages previous]

Today the area supervisor theorized that the group of blocks in M¹⁻⁵ may be assoc. w/ the big wall. ~~Some~~ A stairway leading to the west end of the wall may exist, if so, these blocks may be around some ~~own~~ altar or other structure w/in the temenos. An objection to this is the somewhat sloppy construction of the complex of blocks in M¹⁻⁵. Also a direct connection betw. these blocks and the large wall has not yet been firmly established. This requires further excavation.

-6, -7, -8 Level 3 Batt. 2

In addition to the Hittite frag. the material was all coarseware frags w/ a couple black glaz. sherds. Some distinctive tile from area also saved. Material as stated before appears Roman. In M¹⁻⁷ the north of M¹⁻⁷ beginning 0.80 m fr. its west end ~~there is~~ a conc. of stones and tiles has appeared. ^{congruently} To the top of a large block has also appeared just south of this concentration. The next batt. should help to clarify this area.

-6, -7, -8 ~~Batt. 2~~ Level 3, Batt. 2

Soil remains unchanged. The stone + tile conc. and block ~~to~~ in M¹⁻⁷ have been further exposed

July 14, 1978

M¹⁻⁵ level 3, Batt. 3

Soil remains a grayish brown, Munsell 2.5Y 5/2 moist, clay w/ a very high ~~content~~ sand content. Some streaks of red sand present and a few scattered carbon lenses also present in the matrix.

~~M¹⁻⁶~~ Excavation and cleaning east of large blocks in M¹⁻⁵. This operation was carried out by Prof. Carter using pick and trowel. A layer of virgin soil has appeared in the SE corner of M¹⁻⁵ at the bottom of M¹⁻⁵. This virgin soil continues in M¹⁻⁶, and Prof. Carter has observed that it descends as it moves northward. The virgin soil is a yellowish brown, Munsell 10YR 5/4 moist, sand of a fine texture. A somewhat coarser dark grayish, Munsell 10YR 4/2 moist, lies above the descending virgin soil. Prof. Carter has identified this latter sand contains material incl. votive frags and numerous small carbon lenses. Prof. Carter has ident. this sand as a fill above the virgin soil probably coming from a spring. He theorizes that this is the area of the ancient spring opening. Prof. Carter has reconstruct. the situation as follows: The blocks in M¹⁻⁵ are the remains of the spring house while the walls in M^{1-5, 6-3} are part of a large basin. The great flood indicated by the layer of gravel throughout the site destroyed the sanctuary. Shortly afterward the farmhouse was constructed. The tile construction on top of the spring house is the remains of a well wh. the farmers built to take advantage of the now covered spring. Prof. Carter points out that a large conc. of votive frags. were found in M¹⁻⁶ during the 1977 season.

M^{6-7, 8} level 3, Batt. 2

PZ. 78. 543 PL

Excavation of this level continues from yesterday. The soil remains the same dark grayish brown clay as discovered above. Many tiles are present in the level; the majority of tiles frags are from the flat variety w/ unflanged edge. My previous feeling that this was a layer of Roman material has been strengthened by the find of a well piece of Arretine style ware w/ impressed line design

PZ. 78. 544 B - 4 large & 5 small bone frags

PZ. 78. 545 T - large tile frag (antefix base?)

STRATIGRAPHIC LEVELS

M¹⁻⁵ Level 3, Batt. 3

NORTHWEST CORNER NE. N. BULK BY BLOCKS	- 9.07m.
SW corner	- 9.20m.
Center	- 9.11m. - 9.13m.
SE corner	- 9.14m.

M^{1-6, 7, 8} level 3, Batt. 2

M¹⁻⁶ West end of area, center.	- 9.06m. - 8.76m.
M ¹⁻⁶ SE corner	- 9.08m. - 8.78m.
M ¹⁻⁷ Center	- 8.77m. - 8.79m.
SE corner	- 8.88m.

M¹⁻⁵ Level 3, Batt. 3

PZ. 78.553PL

Sand content of soil once again increases in the NW corner as in Batt. 2. The density of red sand in the matrix is noticeably higher in the SE section of the sq. and a very small area in the NW corner. Prof. Carter has recognized a change in soil color in the western half of the sq. which he believes corresponds to the 6th c. channel found in M¹⁻⁵ during the 1977 season. This soil change is not entirely noticeable to the supervisor, the next batt. should help to clarify matters. The material is predominantly coarseware w/ a few sherds of black glaze and painted ware. There were many frags. of small votive cups and one intact votive cup was found. There were also four small statuettes frags among the finds. PZ. 78.555T

* There was one characteristic 6th c. rim frag. among the sherds. PZ. 78.556T

-6 Excavation and cleaning east of large blocks in M¹⁻⁵ PZ. 78.558M

Prof. Carter has brought his operation to the point of photography. A section has been exposed revealing the stratigraphy of the area. The majority of material was coarseware sherds, there were also a ~~couple~~ ^{few} fine ware frags and three statuettes fragments. PZ. 78.559T

-6 7-8 level 3, Batt. 2

(See previous page)

In addition to Arretine frag, the mat. was all coarseware frags w/ a couple black glaze sherds. Some destructive tile frags were saved. Map. as stated bef. appears to be km. In the north of M¹⁻⁷ beg. 0.80m fr. its west end a conc. of stones

and tiles have appeared. The top of a large ^{conglomerate} block has also shown up just south of this cone. The batt. should help to clarify the seq. Work in area now stopped 2.90m from east end of M'-8, apparently for dumper considerations.
6:7:8. Level 3, Batt. 3. PZ. 78.546 PL

Soil remains unchanged from previous batt. Stone & tile congl. and conglom. block in M'-7 further exposed. Other scattered tiles are visible at the bottom of the batt. A upper frag of a water's head figurine was found in the southern portion of M'-8. Majority of material is coarseware frags of Roman appearance w/ the exception of a few black glaze shells. Once again some tile frags have been saved. During his visit today Prof. Adametzbaum ident. one of the coarseware frags as part of an antefix. It would have been one of the report pieces. Several large bone frags, another frag. and PZ. 78.5517 PZ. 78.5478, 5498

Level 3, Batt. 4 a large lump of iron slag were also among the finds. Also several grayware frags are present
Level 3, Batt. 4 PZ. 78.561 PL

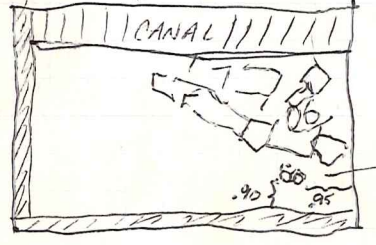
Two large frag. bases have been found 0.95 m. fr. east end of sq and 0.90m found south baulk. They may be hydria bases. Both are lying w/ their ~~base~~ bottom pointed up. There is one large base frag. its full extent not yet determined on top of which is a smaller base frag. The soil appears to be the same very sandy grayish brown clay previously encountered in this area. There may be some slightly darker soil in the center area to correspond to Prof. Carter's channel, but I still have not ident. it w/ certainty. In the NW corner as was first observed last batt. there was a cone of yellowish brown sandy soil. Work in this area has been greatly complicated by a flow of water which has turned it into a pond. The water seems to be seeping in all through the sq. which makes water control diff. A hole in drain hole is being driven in the south baulk. The material is predominately coarseware w/ some black glaze ware. Prof. Carter has ^{pointed out} the archaic character of all pottery, there is the base of an Ionic cup and several 6th c. type rim frags. See Batt. 3 for the first

PZ. 78.552 T. Saty. r. head. PZ. 78.552 PZ. 78.552 PZ. 78.552 M. conglom. w/ rust PZ. 78.552 M. large nail

appearance of a characteristic 6th c. Etruscan. There is only one small figurine frag., however there were many frags of small votive cups. Also among the material was a large frag of a small vase w/ a small neck, wide ^{just handle} and round body, possibly an aryballos. Also a bone frag., ident. by Leonardo as a ~~small~~ knee joint. **PZ.78.563B-3 bone frags**



A complete Attic intact votive cup, 0.028 m. h., and a frag but poss. complete votive long cup, 0.04 m. h. have been found. Also a ~~frag~~ shield wh. Prof. Korte says may be a ~~frag~~ thymetoron frag. Also an intact shallow votive phiale **PZ.78.569T-B**



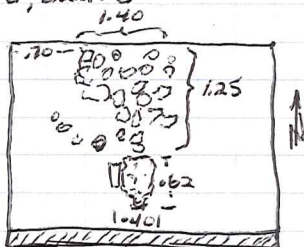
PZ.78.564T- stat frag-head?
PZ.78.569B-

STRATIGRAPHIC LEVELS

- M¹⁻⁵ Level 3, Batt. 4
- Two VASES IN SITU. -9.28 m.
- M^{1-6, 7, 8} Level 3, Batt. 3
- West end, center -9.05 m.
- SE corner M¹⁻⁶ -9.08 m.
- N¹⁻⁷ ON STONE & TILE CONC. AG. N. BANK -8.87 m.
- M¹⁻⁷ Center -9.10 m.
- M¹⁻⁷ SE corner -9.13 m.
- EAST END OF EXCAV. -9.15 m.

July 17, 1978

M¹⁻⁷ Level 3, Batt. 3



Tile and stone cone and large conglom. block, sharpened above, were swept and photographed. On the next batt. the stone and tile cone will be removed, and the block will be left in place.

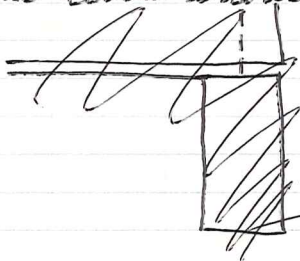
1-8,-9 ~~Clearing~~ Level 3, Clearing of Dumper ramp.

The dumper ramp in this area is being cleared down to Level 3, Batt. 3. This operation includes the eastern section of M¹⁻⁸ previously left unexc., see above, and ~~a few centimeters~~ of 0.60 m of M¹⁻⁹. This entire area in conj. w/ M¹⁻⁶⁻⁷ will now be excavated in search of the bezel's elusive corner.

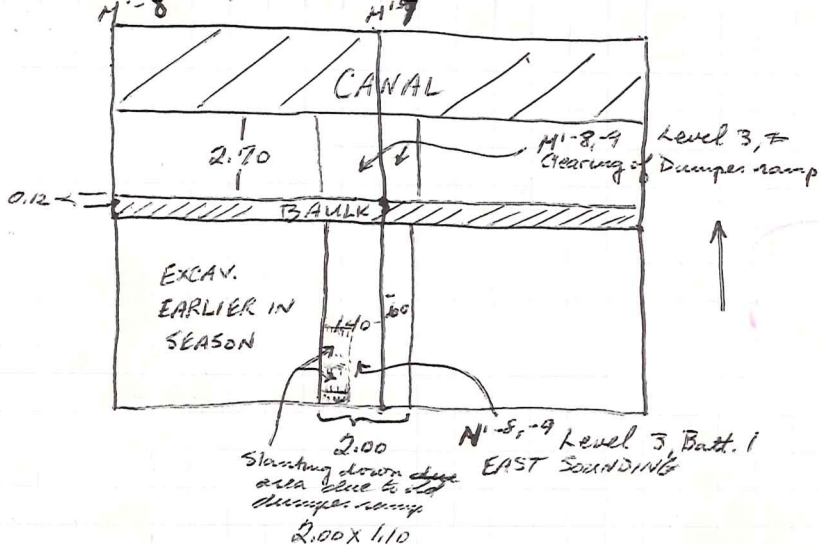
- 8,-9 Level 3, Batt. 1 EAST SOUNDING

PZ-78-585PL

This area has been opened to clarify the apparent wall previously found in the NE corner of N¹⁻⁸ see above. The unexc. 1.40 m. of N¹⁻⁸ and 0.60 m. of N¹⁻⁹ constitute this sounding. The bulldozer has been in this area twice, therefore the exact level in relation to other areas is difficult to det. It is very near Level 3, Batt. 1 and will be desc. as such. For an exact correspondence to other levels the actual stratigraphic level should be referred to in the notes.



This area will also be desc. as "East Sounding" to distinguish it from the earlier work in N¹⁻⁸. Also along the SW side of this area a strip 2.00 x 1.10 slopes down ^{# mark} 0.40 m. due to presence of old dumper ramp.



The soil is a very dark grayish brown clay, Munsell 2.5Y 3/2 moist, with a few streaks of red sand and some ~~scattered~~ traces of gravel in its matrix. Scattered tile frags are present throughout the level. There was very little mat, a few bone and coarseware frags, and a small pyramidal counterweight. No characteristic pieces however the coarseware in general appearance seems Roman. Admittedly basing an assumption on the appearance of coarseware fabric is very shaky.

BATIMETRIC LEVELS - SIGHTED FROM M^L4 @ -7.70m

M^L1-8, -9 level 3, Batt. 1 EAST SOUNDING

NW corner	- 8.81m.
NE corner	- 8.82m.
Center	- 8.87m.
SE corner	- 8.79m.

M^L1-8, -9 level 3, Batt. 2 EAST SOUNDING

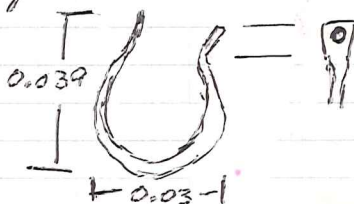
NW corner	- 8.96m.
NE corner	- 8.94m.
Center	- 8.98m.
SE corner	- 8.93m.

4¹-8, -9 Level 3, Clearing of Dumpster ramp. PZ.78.583PL

584B Very little material, the majority was coarseware frags. Some bone frags, a few black glaze sherds, and one frag. of Ametins-type were also present among the finds. Also a small broken pyramidal bowl.

1-6, -7 Level 3, Batt. 4. PZ.78.575PL (2 bags) ^{from}

582A Work in this area -6 = -8 was all kept in one lot. Now on the lot will be divided betw. -6, -7 and -8, -9. The area of -6 working into -7 contains numerous stones and tile frags wh. are assoc w/ the stone + tile conc. in -7. This conc. is being removed with this batt. The large conglom. block will be left in place. Among the early finds is a bent piece of iron w/ eyelets at both ends. A pot ear ring? I vaguely remember a similar piece of metal from the 1977 season.



- PZ.78.576P - sherds of white vessel
- " 577P - gritty spout sherd
 - " 578P - lamp spout
 - " 579P - large white rim sherd
 - " 580T - large tile rim w/ recess
 - " 581B - 7 bone frags

4¹-8, -9 Level 3, Batt. 2 East Sounding PZ.78.587PL

582B Soil remains unchanged. Little mat; some coarseware sherds and a few bone frags, ^{two} grayware sherds, some black glaze sherds incl. one w/ decoration, and a frag. of a small vessel w/ a knob base - a votive amphora?

1-6, -7 Level 3, Batt. 4

Soil seems to have changed slightly. It is a dark gray, Mumwell 5Y 4/1 moist, clay w/ numerous small streaks of red sand. The white concretions present in previous batt. are ~~not~~ longer evident. There are a few small pebbles scattered throughout the matrix.

2

N¹-8,-9 Level 3, Batt. 3 EAST SOUNDING PZ. 78.589 PL

Soil is a dark grayish brown, Munsell 2.5Y 4/2 moist, clay with a few small pebbles and virtually no red sand in the matrix. ~~The clay~~ The clay is moist and sticky coming up in large clods w/ the picks. There is relatively little material, however many small sherds are no doubt lost in the clods.

There is very little material, but better than half the finds are black glaze frags among which is a sherd w/ a palmette design. There are also a few small coarseware sherds. The character of this area had been becoming more Greek in the last batt., this trend has continued so that now all the mat. appears Greek.

Another sherd w/ a palmette design and ~~one~~ one w/ a vertical line decoration also were found along w/ a large red figure sherd showing some drapery and a pair of bare knees. Also the head of a nail. PZ. 78.591P-A, B, C, D PZ. 78.592M

-8,-9 Level 3, Batt. 4 East Sounding PZ. 78.593 PL

Soil continues to be the same dark grayish brown clay. Relatively little material, many black glaze sherds.

Also a red figure sherd w/ a woman on it and a sherd w/ a poorly done palmette design have appeared. A grayware sherd w/ raised decoration has also been found, another probable ^{local} imitation of a Megarian bowl.

Another sherd of the same type has appeared this time w/ a raised leaf on it for dec. PZ. 78.595P

-8,-9 Level 3, Batt. 5 East Sounding PZ. 78.594B - large tooth? 3 bone frags
Noid remains

PZ. 78.590T - small white lid w/ knob

3

July 18, 1978

N¹-8, -9 Level 3, Batt. 4 EAST SOUNDING PZ. 78.597 PL

Batt. completed from previous day's work. The material consists of a mix of black glaze and coarseware sherds. Notable finds ~~was~~ a fragment of terra cotta fluting poss. fr. the base of a loutervon, a frag. of red fig w/ part of a male chest on it, a black glaze sherd w/ unincised vertical line decoration, and a rim frag of 6th c. type.

PZ. 78.599T

PZ. 78.598P

STRATIGRAPHIC LEVELS SIGHTED FROM N¹-5 @ -7.75m.

N¹-8, -9 Level 3, BATT. 4 EAST SOUNDING

NW corner - 9.34m.

NE corner - 9.33m.

Center - 9.32m.

SE corner - 9.20m.

N¹-8, -9, Level 3, BATT. 5 EAST SOUNDING PZ. 78.603 PL

Soil remains the dark grayish brown clay as noted in previous batt., however there are some patches of a thin gray clay, Munsell 7.5 N4/0 moist, as encountered earlier in exc. this area. This gray clay is present in the matrix & is especially noticeable at points where the pick has cut the clay. There is little material on this level, although no doubt many sherds ~~was~~ were lost in the large chds of clay wh. the workmen disposed of unbroken.

PZ. 78.604S - med. chalk lump

N¹-7, -8, -9 Level 3, BATT. 4

Yesterday I stated the intention of clearing the material of this area betw. -6, -7 and -8, -9. I was involved in other things this morning and did not catch the progress of the workers from -7 into -8, therefore the planned separation will not take place. Five wheelbarrows of soil were taken from this level in -7 for use in the two water separation devices. A similar fine wheelbarrow load will be taken from an succeeding ~~level~~ ^{batt.} in this area. Also a more stringent effort will now be made to keep a sizeable sample of tile frags fr. the levels in this area. The ~~soil~~ ^{soil} remains unchanged from the work in this batt yesterday.

24

N¹-8, -9 Level 3, BATT. 5 EAST SOUNDING.

Stones assoc. w/ the previously excav. wall or pavement in the NE corner of N¹-8 have now appeared at the bottom of this batt. Relatively little material, it ~~is~~ consists of predominantly coarseware w/ some black glaze frags incl. a sm. del. sherd. In addition also several frags of imitation Megarian bowls were found. One of these frags has what appears to be a theater mask on it while another has a horse rearing on its hind quarters of a man behind it. In addition to these Megarian bowl fragments there are a few frags of grayware. This intrusion of late material is perplexing, and at present I have no explanation. It is interesting to note that in the previous exc. of N¹-7, -8 the frags of megarian type ~~so~~ ware was concentrated towards the NE corner of the area. We of course now are expanding in this area.

PZ 78.605P

PZ 78.600PL

~~N¹-7, -8, -9~~ Level 3, Batt. 4

The material of this area is relatively little, and is a mix of Greek and Roman material. There are numerous large thick coarseware sherds and a few frags of grayware which are no doubt Roman. There ~~are also~~ are also black glaze frags of Greek nature. In addition to the sherd there were two circular iron weights, a lump of iron slag, and several large iron frags among the material. Along the north wall of this area a level of breccia has appeared, it does not continue to any extent into the area under excav. It is prob. part of the fill of the old canal rather than an ancient level.

PZ 78.601T

PZ 78.602B

STRATIGRAPHIC LEVELS SIGHTED FR N¹-5 @ -7.75m.

N¹-6, -7, -8, -9 Level 3, Batt. 4

West end of area	- 9.02m.
N ¹ -6 SE corner	- 9.06m.
N ¹ -7 Center	- 9.08m.
N ¹ -7 SE corner	- 9.06m.
EAST END EXPANDED	- 9.02m.

EASTWARD INTO N¹-9

STRATIGRAPHIC LEVELS SIGHTED FR. N¹-5 @ -7.75m

N¹-8, -9 Level 3, Batt. 5 EAST Sounding

NW corner - 9.58 m.

NE corner - 9.55 m.

Center - 9.53 m.

SE corner - 9.48 m.

N¹-8, -9 Level 3, Batt. 5 EAST Sounding

Prof. Carter has observed what is most likely the shadow of a wall in the east-west baulk along the N-axis. This shadow is in the form of fine yellowish brown sandy soil interrupting the stratigraphy. Its exposed dimensions on the south side of the baulk is 0.75m (w) x 0.50m. It is also observable on the north side of the baulk. This shadow wall no doubt is part of ~~the~~ an eastern parallel wall to the large wall in N¹-5, -6. The shadow interrupts level 3, therefore it can be assumed to have been standing above ground when the level was laid, as noted by Prof. Carter. Then after the laying of level 3 the block was removed, a factor which no doubt explains the intrusion of Roman mat. in this area such as the Megarian bowl frags. In conjunction with this the large block is previously excavated. N¹-8 was part of the wall, and it is evident that a pavement was partially built over this after it had collapsed. The line of blocks in N¹-5, -6 escaped destruction because they were below ~~the level~~ of the ground (lev. 4) at the time of the laying of level 3. In traveling around the large block prev. found in N¹-8 Prof. Carter has come across a high conc. of the plant material as previously encountered in the area. He has wondered if this could be remnants of the decayed wood from the bld. The site supervisor has raised the objection that since other wood branches removed in the conditions in this layer, we should look for another explanation of this material. The observations of this shadow wall were all made by ~~the~~ Prof. Carter. The site supervisor noticed the shadow in the baulk, but didn't attach any importance to it at the time.

N1-8, -9 level 4, BATT. 1 EAST SOUND, N15

PZ-78.610PL

This level's designation follows the previous practice of level 4 = the second tile conc. Level 5, the area of very heavy tile conc. rises slightly towards the east and may take in this area, but it is not certain. Also there is not a very heavy tile fall in this area. ~~But~~ The northern third of this area was not effected by this batt., since it contains large blocks and other stones wh are being left for further clarification. The soil is a very dark gray, Munnell 4.54R N3/0 moist, clay with some small stones and white excretions scattered through the matrix. For a description of the shadow wall noted in the baulk etc see above under level 3, Batt 5. Very little material was present, a few jarwares and black glaze sherds including a 6th c. type rim frag.

RATIGRAPHIC LEVELS SIGHTED FROM N^o-5 @ 17.15m.

PZ-78.611S - double-not mending?

N1-8, -9 level 4, BATT. 1 EAST SOUND, N15

Center. - 9.64m.

SE corner - 9.59m.

Other areas not effected by batt.

-6, -7 level 3, BATT. 5

PZ. 78.606PL (2 bags)

The soil of this area is a dark grayish brown, Munnell 2.54 H/2 moist. clay. It is generally of very fine texture, except along the northern wall of the sounding where the sand content increases. ~~Some~~ Stones and ~~the~~ tile frags are scattered throughout the matrix. Along the west limit of the sounding a concentration of stones and tiles has been uncovered. Once again five wheelbarrow loads of soil are being saved for N-17. I believe that the ~~the~~ stone and tile conc. on west edge of sounding is the top of the second tile conc., i.e. Level 4. This tile conc. dips down as it moves eastward and the rest of the sounding is at least 0.25-0.30m. above level 4 according to my calculations. There is quite a bit of material. Many large coarseware frags and some grayware frags. There are also ~~some~~ ^{some} coarseware black glaze frags including a large frag of an ^{inguentarium} w/ a black glaze band. A mixture of material would be expected if part of level 4 was nicked in the west end of area as prev. discussed.

PZ-78-607T - Statuette frag ; PZ-78.608S - 9 bone frags

N^o 8^o - 9 level 4, BATT. 2 EAST SOUNDING PZ. 78.612 PL

More of the shadow wall has appeared at the bottom of this batt. Giuseppe began by cleaning up the shadow block found in this area in June, and further tunnelling in the sounding revealing a continuation of the ~~shadow~~ shadow wall, over 2.0m. in length. The shadow itself and the ~~soil~~ soil to the bott. of this batt. composed of the very dark gray clay encountered in Batt. 1. Appearing at the bottom of the batt. and flanking the shadow wall is fine olive gray, Munnell 5Y 4/2 - 3/2 (Dark Olive Gray) moist, clay as ~~it~~ come ~~across~~ across in the earlier excavation in this area. Very little material, seven coarse ware sherds, and one black glaze sherd, however one very large lump of wood, c. 0.12 x 0.06, was also found. Once this area has been cleaned up, it will be left for photography and the architect. It may very well be the end of work in this area.

PZ. 78.614 SS
PZ. 78.613B - Home flag FOR LEVELS SEE END OF NR.

11-6, -7 level 3, BATT. 5

The Dumper got stuck in the clay up to its axles. As per usual w/ the dumper it thoroughly chewed up the stratigraphy. It finally had to be extricated by a Tractor tractor.

July 19, 1978

M¹-6, -7 Level 3, Batt. 5

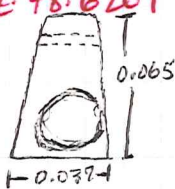
PZ. 78. 615 PL

Mess made by the stuck dumper was cleaned up, then the batt. was continued. Work is very slow, since this area is now full of water at this level which makes the clay very unworkable. Banking of clay along the wall ~~has been attempted to stop the flow of water~~ has been attempted. An ~~unusual~~ ^{unusual} circular loomweight of an ^{impressed} ~~impressed~~ ^{impressed} pattern and wave design has appeared

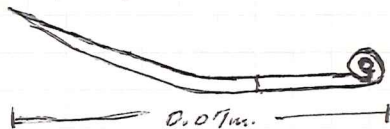
PZ. 78. 619 T



PZ. 78. 620 T



A pyramidal loomweight has now appeared with an impressed circle on one of its sides. Also a lump of iron. Now a piece of a fibula has turned up.



PZ. 78. 618 M

A complete cover tile, ^{PZ. 78. 614 T} 0.90m in length, has been found lying at the ~~eastern~~ southern eastern edge of the area of -7 under exc. It runs E-W w/ ~~its~~ east edge lying on the -8 axis. For exact position of the tile see the site plan, architect Mitchell Goussens was on the site and put it on the plan. The tile tapers towards one end and there is the remnant of red paint on the wider half of it.

Footnote: After cleaning it was determined that the tile had been misread, and that this was resp. of for the coloration called "remnants of red paint" by the super. Prof. Carter had ident. the tile as being Roman.

PZ. 78. 616 B - (bone frag) PZ. 78. 617 M - lump of iron

STRATIGRAPHIC LEVELS SIGHTED FROM M¹⁻⁴ @ -7.70

- M¹⁻⁶; -7 Level 3, BATT. 5
- M¹⁻⁶ SE corner -9.185m.
- M¹⁻⁷ Center -9.235m.
- EAST TIP OF COMPLETE COVER TILE IN SITU, M¹⁻⁷ -9.235m.

M¹⁻⁶; -7 Level 3, BATT. 5

The material continues to be a mixture of Greek and Roman sherds. In addition to a selection of nondescript coarseware sherds, there were many frags of grayware (prob. a quarter of the lot) and several black glaze frags.

-5 Clearing of ~~1977~~ 1977 EARTH BANK UNDER well point Pipe Batt 1 PZ. 78.624PL

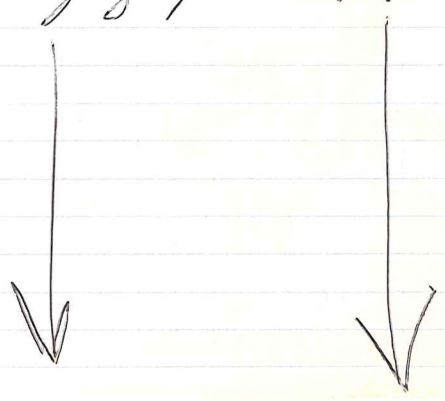
This operations ~~is~~ removed earth left in 1977 as support for pump pipe & reutilized for same thing in 1978. Very little material, mix of cw & lg. 6th coins

-5 Clearing of 1977 Earth P. under well point Pipe B. 2 Ditto above in mat. PZ. 78.625PL

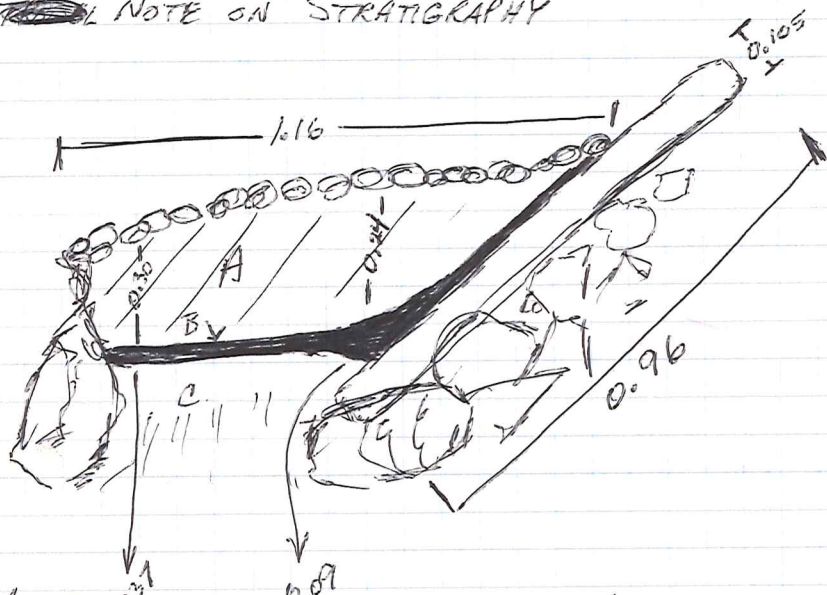
-6 Clearing of 1977 Wheelbarrow Ramp Batt. 1 Title explains it, area to south of pipe. Mix of mat. Cw & BB. One lump of iron slag PZ. 78.626PL

-6 Clearing of 1977 Wheelbarrow Ramp Batt 2 little mat no frag. Mix, incl. a couple 6th coins and a mandible. PZ. 78.627PL

-7. -8 Level 3, BATT. 5 don't have it
Relatively little mat. so far. Cw sherds w both grayw and blackglaze present.



1'-8" ~~NOTE~~ NOTE ON STRATIGRAPHY



below ~~along~~ ^{below} the pavement and large conglom. block in the NEC of ~~it~~ has revealed the following seq. on the stratig.
 Layer A, directly below pavement is a dark gray, Munsell 5Y 4/1 moist, clay of fine texture. Middle layer, B, is ~~the~~ the dark reddish brown, Munsell 5YR 2.5/2 moist, layer of plant material.
 Lower layer, C, is a ~~to~~ dark grayish brown ~~clay~~, M. 2.5Y 4/2 moist clay of ~~fine~~ ^{of fine} texture.
 The presence of the layer of plant material running up ^{the} slope of the conglomerate block indicates that this level was ~~land~~ ^{land} after the block had fallen over. ~~It would be assumed~~ therefore that the material below the layer of plant material (Levels 5, BATT. 2 + 6, BATT. 1) should be associated w/ the period of activity when the block was standing upright.

is ~~area~~ below the layer of plant material exists

PZ. 78. 69855 - 20. July. 78 - Flotation sample containing large wood chunks

JULY 20, 1978

D¹⁻⁶ Clearing of 1977 wheelbarrow Ramp Batt. 2 PZ 78.629PL
The work in this area has uncovered the southern wall of the large structure. All this time it has been lying under the wheelbarrow ramp and main pipe of the pump whose orientation it follows. The wall is composed of various large stones, however they are not of a uniform nature as the N-S wall. Several large tall frags. have been found assoc. w/ the wall. Some large stones discovered last year in D¹⁻⁶ obviously fell inward fr. this wall. The blocks met. the one w/ the organic mason's mark in the SW corner of

D¹⁻⁷ are ^{probably} ~~probably~~ linked w/ this wall. The corners of the wall based on observing its angle and the location of the shadow wall should be located in P¹⁻⁷. This ~~indicates~~ indicates a structure about 10 m. in width. This would be an extreme width for roofing the entire struc. yet poss. acc. to P.L. if the structure was built by the best architects of the day.
NOTE ON THE "SPRING HOUSE" in N¹⁻⁵.

Earlier the supervisor theorized that this group of blocks may ~~be~~ have been contemporary w/ the large N-S wall. Recently I have changed this view due to the construction employed in it and the presence of reused blocks. It may very well be a later structure than the walled enclosure to the south and east of it. This is a feeling also now held by Michael Bunnens, the architect on the site. The ~~the~~ recent finish of walls assoc. w/ the N-S wall in N¹⁻⁵⁻⁶ would leave the "spring house" outside this structure, and add little more evid. as their direct association.

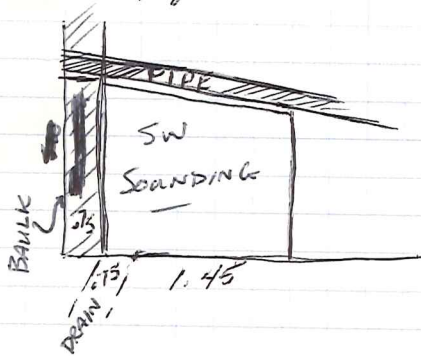
D¹⁻⁶ Clearing of 1977 wheelbarrow Ramp Batt. 2
In the far SE corner of this area the wall appears to make a corner to the south, however this is far from certain. There is another block on line to the east, and further excav. to the south and east would ~~to~~ fully clarify this area. Prof. Carter has raised the poss. that this wall belongs to a latter stage since its corner is not entirely of squared conglom. blocks. Another possibility is that ~~the~~ the east and west sides were of finer constr. and less expense of work and work material is all small row shreds except for seven black glaze shreds.

2

X

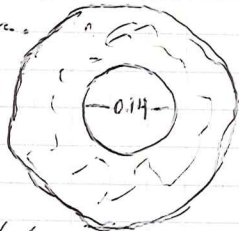
1-5 level 5, BATT. 1 Southwest sounding.

This area was unexc. in 1977 due to the presence of the pump pipes and wheelbarrow ramp. ~~It~~ ^{It} lies directly south of the 6th c. water channel ^{at 100m} dis. by Prof. Carter in the 1977 season, and further traces of it may be found here. The soil is a gray, Munsell 5Y 5/1 moist clay w/ some streaks of red sand in the matrix, and at darkens to the west to a dark gray, Munsell 5Y 4/1 moist, clay of similar texture and composition. ~~It~~ It will be pos. to determine the presence or absence of the 6th c. channel only after troweling of the area.



11-8-9 level 3, BATT. 5.

The soil remains unchanged from the previous days work in this area. Water continued to be a problem, and a 0.60 m. strip of soil was left along the north wall of the sounding in a vain effort to keep the water out. A possible mill stone was found 2.45 m. east of M¹¹⁻⁸ and 0.9 m. north of the north bank. It is a roughly circular stone 0.08 m. in diam.



The continuation of the shadow wall previously noted in the bank appeared on the floor of the batt. 4.50 m. ^{east of} from M¹¹⁻⁸.

23

The shadow is a rectangle, 2 1/4 x 0.60m, oriented N-S. It is filled with yellow-brown sandy soil as previously noted in the bank. The soil in this shadow differs from the dark clay in the shadow lower down in N-S. Therefore these blocks were certainly removed at different times. ~~This has~~ However has no direct bearing on whether or not these different shadows were associated with another. ~~It is possible that the latest shadow was simply a~~ little material. Mostly large coarseware sherds, also a few grayware and black glaze frags. ~~Work has been~~ The presence of the water has forced the stoppage of ^{work} in this area.

1-5 Level 5, Batt. 1 Southwest Sounding. PZ 78-634PL

This was a shallow batt. of 0.09-0.10m. in depth. ~~The above noted clay did not form the stain~~ The stain ident. last yr. as a 6th c. channeled did not appear. There was a relatively high quantity of material for the area exc. It was definitely archaic in character w/ numerous frags. of Ionic cups. PZ 78-623P - shreds of 6th cent. B.G. cup
PZ 78-635B - 2 bone frags

2) Level 5, Batt. 2 Southwest Sounding.
The pit was found last year in ~~the~~ further north in ~~N, 0'-5'~~ has also appeared in the

-5 Sounding in interior of "Spring House" PZ 78-630PL
This work is being carried out by H. D. T. in effort to determine the exact nature of the blocks when Prof. Carter has ident. as a Spring House. The soil of the interior is a fine ~~sandy~~ sandy dark grayish brown, M. 2.57 4/2 moist clay. There are many tiles frags throughout the matrix as well as several ~~large~~ blocks wh. have been removed. There is virtually no material

1-5 Level 3, Batt. 5

Work was stopped earlier in this area due to the presence of water throughout the level. Prof. Carter

has now decided that an attempt should be made to take this level down to virgin soil in spite of the water. Finds are a few coarse glassware chert.

- 5 Level 5, BATT. 2 **PZ. 78.636PL** **PZ. 78.637B** **PZ. 78.637C** **PZ. 78.637D** **PZ. 78.637E** **PZ. 78.637F** **PZ. 78.637G** **PZ. 78.637H** **PZ. 78.637I** **PZ. 78.637J** **PZ. 78.637K** **PZ. 78.637L** **PZ. 78.637M** **PZ. 78.637N** **PZ. 78.637O** **PZ. 78.637P** **PZ. 78.637Q** **PZ. 78.637R** **PZ. 78.637S** **PZ. 78.637T** **PZ. 78.637U** **PZ. 78.637V** **PZ. 78.637W** **PZ. 78.637X** **PZ. 78.637Y** **PZ. 78.637Z** **PZ. 78.637AA** **PZ. 78.637AB** **PZ. 78.637AC** **PZ. 78.637AD** **PZ. 78.637AE** **PZ. 78.637AF** **PZ. 78.637AG** **PZ. 78.637AH** **PZ. 78.637AI** **PZ. 78.637AJ** **PZ. 78.637AK** **PZ. 78.637AL** **PZ. 78.637AM** **PZ. 78.637AN** **PZ. 78.637AO** **PZ. 78.637AP** **PZ. 78.637AQ** **PZ. 78.637AR** **PZ. 78.637AS** **PZ. 78.637AT** **PZ. 78.637AU** **PZ. 78.637AV** **PZ. 78.637AW** **PZ. 78.637AX** **PZ. 78.637AY** **PZ. 78.637AZ** **PZ. 78.637BA** **PZ. 78.637BB** **PZ. 78.637BC** **PZ. 78.637BD** **PZ. 78.637BE** **PZ. 78.637BF** **PZ. 78.637BG** **PZ. 78.637BH** **PZ. 78.637BI** **PZ. 78.637BJ** **PZ. 78.637BK** **PZ. 78.637BL** **PZ. 78.637BM** **PZ. 78.637BN** **PZ. 78.637BO** **PZ. 78.637BP** **PZ. 78.637BQ** **PZ. 78.637BR** **PZ. 78.637BS** **PZ. 78.637BT** **PZ. 78.637BU** **PZ. 78.637BV** **PZ. 78.637BW** **PZ. 78.637BX** **PZ. 78.637BY** **PZ. 78.637BZ** **PZ. 78.637CA** **PZ. 78.637CB** **PZ. 78.637CC** **PZ. 78.637CD** **PZ. 78.637CE** **PZ. 78.637CF** **PZ. 78.637CG** **PZ. 78.637CH** **PZ. 78.637CI** **PZ. 78.637CJ** **PZ. 78.637CK** **PZ. 78.637CL** **PZ. 78.637CM** **PZ. 78.637CN** **PZ. 78.637CO** **PZ. 78.637CP** **PZ. 78.637CQ** **PZ. 78.637CR** **PZ. 78.637CS** **PZ. 78.637CT** **PZ. 78.637CU** **PZ. 78.637CV** **PZ. 78.637CW** **PZ. 78.637CX** **PZ. 78.637CY** **PZ. 78.637CZ** **PZ. 78.637DA** **PZ. 78.637DB** **PZ. 78.637DC** **PZ. 78.637DD** **PZ. 78.637DE** **PZ. 78.637DF** **PZ. 78.637DG** **PZ. 78.637DH** **PZ. 78.637DI** **PZ. 78.637DJ** **PZ. 78.637DK** **PZ. 78.637DL** **PZ. 78.637DM** **PZ. 78.637DN** **PZ. 78.637DO** **PZ. 78.637DP** **PZ. 78.637DQ** **PZ. 78.637DR** **PZ. 78.637DS** **PZ. 78.637DT** **PZ. 78.637DU** **PZ. 78.637DV** **PZ. 78.637DW** **PZ. 78.637DX** **PZ. 78.637DY** **PZ. 78.637DZ** **PZ. 78.637EA** **PZ. 78.637EB** **PZ. 78.637EC** **PZ. 78.637ED** **PZ. 78.637EE** **PZ. 78.637EF** **PZ. 78.637EG** **PZ. 78.637EH** **PZ. 78.637EI** **PZ. 78.637EJ** **PZ. 78.637EK** **PZ. 78.637EL** **PZ. 78.637EM** **PZ. 78.637EN** **PZ. 78.637EO** **PZ. 78.637EP** **PZ. 78.637EQ** **PZ. 78.637ER** **PZ. 78.637ES** **PZ. 78.637ET** **PZ. 78.637EU** **PZ. 78.637EV** **PZ. 78.637EW** **PZ. 78.637EX** **PZ. 78.637EY** **PZ. 78.637EZ** **PZ. 78.637FA** **PZ. 78.637FB** **PZ. 78.637FC** **PZ. 78.637FD** **PZ. 78.637FE** **PZ. 78.637FF** **PZ. 78.637FG** **PZ. 78.637FH** **PZ. 78.637FI** **PZ. 78.637FJ** **PZ. 78.637FK** **PZ. 78.637FL** **PZ. 78.637FM** **PZ. 78.637FN** **PZ. 78.637FO** **PZ. 78.637FP** **PZ. 78.637FQ** **PZ. 78.637FR** **PZ. 78.637FS** **PZ. 78.637FT** **PZ. 78.637FU** **PZ. 78.637FV** **PZ. 78.637FW** **PZ. 78.637FX** **PZ. 78.637FY** **PZ. 78.637FZ** **PZ. 78.637GA** **PZ. 78.637GB** **PZ. 78.637GC** **PZ. 78.637GD** **PZ. 78.637GE** **PZ. 78.637GF** **PZ. 78.637GG** **PZ. 78.637GH** **PZ. 78.637GI** **PZ. 78.637GJ** **PZ. 78.637GK** **PZ. 78.637GL** **PZ. 78.637GM** **PZ. 78.637GN** **PZ. 78.637GO** **PZ. 78.637GP** **PZ. 78.637GQ** **PZ. 78.637GR** **PZ. 78.637GS** **PZ. 78.637GT** **PZ. 78.637GU** **PZ. 78.637GV** **PZ. 78.637GW** **PZ. 78.637GX** **PZ. 78.637GY** **PZ. 78.637GZ** **PZ. 78.637HA** **PZ. 78.637HB** **PZ. 78.637HC** **PZ. 78.637HD** **PZ. 78.637HE** **PZ. 78.637HF** **PZ. 78.637HG** **PZ. 78.637HH** **PZ. 78.637HI** **PZ. 78.637HJ** **PZ. 78.637HK** **PZ. 78.637HL** **PZ. 78.637HM** **PZ. 78.637HN** **PZ. 78.637HO** **PZ. 78.637HP** **PZ. 78.637HQ** **PZ. 78.637HR** **PZ. 78.637HS** **PZ. 78.637HT** **PZ. 78.637HU** **PZ. 78.637HV** **PZ. 78.637HW** **PZ. 78.637HX** **PZ. 78.637HY** **PZ. 78.637HZ** **PZ. 78.637IA** **PZ. 78.637IB** **PZ. 78.637IC** **PZ. 78.637ID** **PZ. 78.637IE** **PZ. 78.637IF** **PZ. 78.637IG** **PZ. 78.637IH** **PZ. 78.637II** **PZ. 78.637IJ** **PZ. 78.637IK** **PZ. 78.637IL** **PZ. 78.637IM** **PZ. 78.637IN** **PZ. 78.637IO** **PZ. 78.637IP** **PZ. 78.637IQ** **PZ. 78.637IR** **PZ. 78.637IS** **PZ. 78.637IT** **PZ. 78.637IU** **PZ. 78.637IV** **PZ. 78.637IW** **PZ. 78.637IX** **PZ. 78.637IY** **PZ. 78.637IZ** **PZ. 78.637JA** **PZ. 78.637JB** **PZ. 78.637JC** **PZ. 78.637JD** **PZ. 78.637JE** **PZ. 78.637JF** **PZ. 78.637JG** **PZ. 78.637JH** **PZ. 78.637JI** **PZ. 78.637JJ** **PZ. 78.637JK** **PZ. 78.637JL** **PZ. 78.637JM** **PZ. 78.637JN** **PZ. 78.637JO** **PZ. 78.637JP** **PZ. 78.637JQ** **PZ. 78.637JR** **PZ. 78.637JS** **PZ. 78.637JT** **PZ. 78.637JU** **PZ. 78.637JV** **PZ. 78.637JW** **PZ. 78.637JX** **PZ. 78.637JY** **PZ. 78.637JZ** **PZ. 78.637KA** **PZ. 78.637KB** **PZ. 78.637KC** **PZ. 78.637KD** **PZ. 78.637KE** **PZ. 78.637KF** **PZ. 78.637KG** **PZ. 78.637KH** **PZ. 78.637KI** **PZ. 78.637KJ** **PZ. 78.637KK** **PZ. 78.637KL** **PZ. 78.637KM** **PZ. 78.637KN** **PZ. 78.637KO** **PZ. 78.637KP** **PZ. 78.637KQ** **PZ. 78.637KR** **PZ. 78.637KS** **PZ. 78.637KT** **PZ. 78.637KU** **PZ. 78.637KV** **PZ. 78.637KW** **PZ. 78.637KX** **PZ. 78.637KY** **PZ. 78.637KZ** **PZ. 78.637LA** **PZ. 78.637LB** **PZ. 78.637LC** **PZ. 78.637LD** **PZ. 78.637LE** **PZ. 78.637LF** **PZ. 78.637LG** **PZ. 78.637LH** **PZ. 78.637LI** **PZ. 78.637LJ** **PZ. 78.637LK** **PZ. 78.637LL** **PZ. 78.637LM** **PZ. 78.637LN** **PZ. 78.637LO** **PZ. 78.637LP** **PZ. 78.637LQ** **PZ. 78.637LR** **PZ. 78.637LS** **PZ. 78.637LT** **PZ. 78.637LU** **PZ. 78.637LV** **PZ. 78.637LW** **PZ. 78.637LX** **PZ. 78.637LY** **PZ. 78.637LZ** **PZ. 78.637MA** **PZ. 78.637MB** **PZ. 78.637MC** **PZ. 78.637MD** **PZ. 78.637ME** **PZ. 78.637MF** **PZ. 78.637MG** **PZ. 78.637MH** **PZ. 78.637MI** **PZ. 78.637MJ** **PZ. 78.637MK** **PZ. 78.637ML** **PZ. 78.637MM** **PZ. 78.637MN** **PZ. 78.637MO** **PZ. 78.637MP** **PZ. 78.637MQ** **PZ. 78.637MR** **PZ. 78.637MS** **PZ. 78.637MT** **PZ. 78.637MU** **PZ. 78.637MV** **PZ. 78.637MW** **PZ. 78.637MX** **PZ. 78.637MY** **PZ. 78.637MZ** **PZ. 78.637NA** **PZ. 78.637NB** **PZ. 78.637NC** **PZ. 78.637ND** **PZ. 78.637NE** **PZ. 78.637NF** **PZ. 78.637NG** **PZ. 78.637NH** **PZ. 78.637NI** **PZ. 78.637NJ** **PZ. 78.637NK** **PZ. 78.637NL** **PZ. 78.637NM** **PZ. 78.637NN** **PZ. 78.637NO** **PZ. 78.637NP** **PZ. 78.637NQ** **PZ. 78.637NR** **PZ. 78.637NS** **PZ. 78.637NT** **PZ. 78.637NU** **PZ. 78.637NV** **PZ. 78.637NW** **PZ. 78.637NX** **PZ. 78.637NY** **PZ. 78.637NZ** **PZ. 78.637OA** **PZ. 78.637OB** **PZ. 78.637OC** **PZ. 78.637OD** **PZ. 78.637OE** **PZ. 78.637OF** **PZ. 78.637OG** **PZ. 78.637OH** **PZ. 78.637OI** **PZ. 78.637OJ** **PZ. 78.637OK** **PZ. 78.637OL** **PZ. 78.637OM** **PZ. 78.637ON** **PZ. 78.637OO** **PZ. 78.637OP** **PZ. 78.637OQ** **PZ. 78.637OR** **PZ. 78.637OS** **PZ. 78.637OT** **PZ. 78.637OU** **PZ. 78.637OV** **PZ. 78.637OW** **PZ. 78.637OX** **PZ. 78.637OY** **PZ. 78.637OZ** **PZ. 78.637PA** **PZ. 78.637PB** **PZ. 78.637PC** **PZ. 78.637PD** **PZ. 78.637PE** **PZ. 78.637PF** **PZ. 78.637PG** **PZ. 78.637PH** **PZ. 78.637PI** **PZ. 78.637PJ** **PZ. 78.637PK** **PZ. 78.637PL** **PZ. 78.637PM** **PZ. 78.637PN** **PZ. 78.637PO** **PZ. 78.637PP** **PZ. 78.637PQ** **PZ. 78.637PR** **PZ. 78.637PS** **PZ. 78.637PT** **PZ. 78.637PU** **PZ. 78.637PV** **PZ. 78.637PW** **PZ. 78.637PX** **PZ. 78.637PY** **PZ. 78.637PZ** **PZ. 78.637QA** **PZ. 78.637QB** **PZ. 78.637QC** **PZ. 78.637QD** **PZ. 78.637QE** **PZ. 78.637QF** **PZ. 78.637QG** **PZ. 78.637QH** **PZ. 78.637QI** **PZ. 78.637QJ** **PZ. 78.637QK** **PZ. 78.637QL** **PZ. 78.637QM** **PZ. 78.637QN** **PZ. 78.637QO** **PZ. 78.637QP** **PZ. 78.637QQ** **PZ. 78.637QR** **PZ. 78.637QS** **PZ. 78.637QT** **PZ. 78.637QU** **PZ. 78.637QV** **PZ. 78.637QW** **PZ. 78.637QX** **PZ. 78.637QY** **PZ. 78.637QZ** **PZ. 78.637RA** **PZ. 78.637RB** **PZ. 78.637RC** **PZ. 78.637RD** **PZ. 78.637RE** **PZ. 78.637RF** **PZ. 78.637RG** **PZ. 78.637RH** **PZ. 78.637RI** **PZ. 78.637RJ** **PZ. 78.637RK** **PZ. 78.637RL** **PZ. 78.637RM** **PZ. 78.637RN** **PZ. 78.637RO** **PZ. 78.637RP** **PZ. 78.637RQ** **PZ. 78.637RR** **PZ. 78.637RS** **PZ. 78.637RT** **PZ. 78.637RU** **PZ. 78.637RV** **PZ. 78.637RW** **PZ. 78.637RX** **PZ. 78.637RY** **PZ. 78.637RZ** **PZ. 78.637SA** **PZ. 78.637SB** **PZ. 78.637SC** **PZ. 78.637SD** **PZ. 78.637SE** **PZ. 78.637SF** **PZ. 78.637SG** **PZ. 78.637SH** **PZ. 78.637SI** **PZ. 78.637SJ** **PZ. 78.637SK** **PZ. 78.637SL** **PZ. 78.637SM** **PZ. 78.637SN** **PZ. 78.637SO** **PZ. 78.637SP** **PZ. 78.637SQ** **PZ. 78.637SR** **PZ. 78.637SS** **PZ. 78.637ST** **PZ. 78.637SU** **PZ. 78.637SV** **PZ. 78.637SW** **PZ. 78.637SX** **PZ. 78.637SY** **PZ. 78.637SZ** **PZ. 78.637TA** **PZ. 78.637TB** **PZ. 78.637TC** **PZ. 78.637TD** **PZ. 78.637TE** **PZ. 78.637TF** **PZ. 78.637TG** **PZ. 78.637TH** **PZ. 78.637TI** **PZ. 78.637TJ** **PZ. 78.637TK** **PZ. 78.637TL** **PZ. 78.637TM** **PZ. 78.637TN** **PZ. 78.637TO** **PZ. 78.637TP** **PZ. 78.637TQ** **PZ. 78.637TR** **PZ. 78.637TS** **PZ. 78.637TT** **PZ. 78.637TU** **PZ. 78.637TV** **PZ. 78.637TW** **PZ. 78.637TX** **PZ. 78.637TY** **PZ. 78.637TZ** **PZ. 78.637UA** **PZ. 78.637UB** **PZ. 78.637UC** **PZ. 78.637UD** **PZ. 78.637UE** **PZ. 78.637UF** **PZ. 78.637UG** **PZ. 78.637UH** **PZ. 78.637UI** **PZ. 78.637UJ** **PZ. 78.637UK** **PZ. 78.637UL** **PZ. 78.637UM** **PZ. 78.637UN** **PZ. 78.637UO** **PZ. 78.637UP** **PZ. 78.637UQ** **PZ. 78.637UR** **PZ. 78.637US** **PZ. 78.637UT** **PZ. 78.637UU** **PZ. 78.637UV** **PZ. 78.637UW** **PZ. 78.637UX** **PZ. 78.637UY** **PZ. 78.637UZ** **PZ. 78.637VA** **PZ. 78.637VB** **PZ. 78.637VC** **PZ. 78.637VD** **PZ. 78.637VE** **PZ. 78.637VF** **PZ. 78.637VG** **PZ. 78.637VH** **PZ. 78.637VI** **PZ. 78.637VJ** **PZ. 78.637VK** **PZ. 78.637VL** **PZ. 78.637VM** **PZ. 78.637VN** **PZ. 78.637VO** **PZ. 78.637VP** **PZ. 78.637VQ** **PZ. 78.637VR** **PZ. 78.637VS** **PZ. 78.637VT** **PZ. 78.637VU** **PZ. 78.637VV** **PZ. 78.637VW** **PZ. 78.637VX** **PZ. 78.637VY** **PZ. 78.637VZ** **PZ. 78.637WA** **PZ. 78.637WB** **PZ. 78.637WC** **PZ. 78.637WD** **PZ. 78.637WE** **PZ. 78.637WF** **PZ. 78.637WG** **PZ. 78.637WH** **PZ. 78.637WI** **PZ. 78.637WJ** **PZ. 78.637WK** **PZ. 78.637WL** **PZ. 78.637WM** **PZ. 78.637WN** **PZ. 78.637WO** **PZ. 78.637WP** **PZ. 78.637WQ** **PZ. 78.637WR** **PZ. 78.637WS** **PZ. 78.637WT** **PZ. 78.637WU** **PZ. 78.637WV** **PZ. 78.637WW** **PZ. 78.637WX** **PZ. 78.637WY** **PZ. 78.637WZ** **PZ. 78.637XA** **PZ. 78.637XB** **PZ. 78.637XC** **PZ. 78.637XD** **PZ. 78.637XE** **PZ. 78.637XF** **PZ. 78.637XG** **PZ. 78.637XH** **PZ. 78.637XI** **PZ. 78.637XJ** **PZ. 78.637XK** **PZ. 78.637XL** **PZ. 78.637XM** **PZ. 78.637XN** **PZ. 78.637XO** **PZ. 78.637XP** **PZ. 78.637XQ** **PZ. 78.637XR** **PZ. 78.637XS** **PZ. 78.637XT** **PZ. 78.637XU** **PZ. 78.637XV** **PZ. 78.637XW** **PZ. 78.637XX** **PZ. 78.637XY** **PZ. 78.637XZ** **PZ. 78.637YA** **PZ. 78.637YB** **PZ. 78.637YC** **PZ. 78.637YD** **PZ. 78.637YE** **PZ. 78.637YF** **PZ. 78.637YG** **PZ. 78.637YH** **PZ. 78.637YI** **PZ. 78.637YJ** **PZ. 78.637YK** **PZ. 78.637YL** **PZ. 78.637YM** **PZ. 78.637YN** **PZ. 78.637YO** **PZ. 78.637YP** **PZ. 78.637YQ** **PZ. 78.637YR** **PZ. 78.637YS** **PZ. 78.637YT** **PZ. 78.637YU** **PZ. 78.637YV** **PZ. 78.637YW** **PZ. 78.637YX** **PZ. 78.637YY** **PZ. 78.637YZ** **PZ. 78.637ZA** **PZ. 78.637ZB** **PZ. 78.637ZC** **PZ. 78.637ZD** **PZ. 78.637ZE** **PZ. 78.637ZF** **PZ. 78.637ZG** **PZ. 78.637ZH** **PZ. 78.637ZI** **PZ. 78.637ZJ** **PZ. 78.637ZK** **PZ. 78.637ZL** **PZ. 78.637ZM** **PZ. 78.637ZN** **PZ. 78.637ZO** **PZ. 78.637ZP** **PZ. 78.637ZQ** **PZ. 78.637ZR** **PZ. 78.637ZS** **PZ. 78.637ZT** **PZ. 78.637ZU** **PZ. 78.637ZV** **PZ. 78.637ZW** **PZ. 78.637ZX** **PZ. 78.637ZY** **PZ. 78.637ZZ**

Along the north 0.40-0.50m of the area some of the black, M, STR. 2.5 ft moist, stain has appeared which was found last yr. and ident. as a 6th c. channel by Prof. Carter. The black stain is composed of fine clay.

The rest of the area towards the south is gray M. 34 5/16 moist, clay as encountered before. This soil is virgin. The material once again is relatively tough and all of archaic char. There are many Jomic cup frags, also few bone frags. SEE BACK FOR SKETCH

The stain was recorded for photog. on July 21, but flooded before photos could be taken. If it dries out in time photos will be taken. It is a 6th c. well, and is located in the site plan.

- BATHOGRAPHIC LEVELS SIGHTED FOR M-4 @ -7.10m.
- M¹⁻⁸ - 9 Level 3, BATT. 5
 - M¹⁻⁸ North tip of shadow wall - 9.28m.
 - M¹⁻⁸ Center (near millstone) - 9.25m.
 - M¹⁻⁹ West end of exc. - 9.24m.
 - M¹⁻⁵ Level 5, BATT. 2
 - Black stain, North center of pipe - 9.98m.
 - Center - 10.10m.

5 Sounding w/in "Spring House" (see previous page)

Only finds are an amphora base + a frag of a sm. vessel poss. native. Along the east side of the structure the wall is clearly constructed out of tiles laid on top of one another on top of a stone w/ a curved edge. On the south side there is a stone worn by much use. The tile course is also found on the south side. Prof. Carter's theory that this was a well at ~~least~~ one stage had been strikingly confirmed. More work will be done tomorrow.

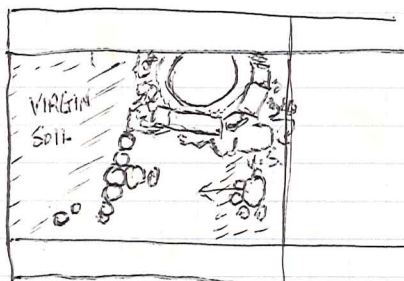
July 21, 1948

LAST DAY W/FULL WORK FORCE. ALL WORKERS BUT GIUSEPPE, WILFREDO, AND LEONARDO ARE UP ON INCORONATA SEARCHING FOR A TEMPLE.

1st - 5th Sounding w/in "Spring House" PZ. 78.652 PL

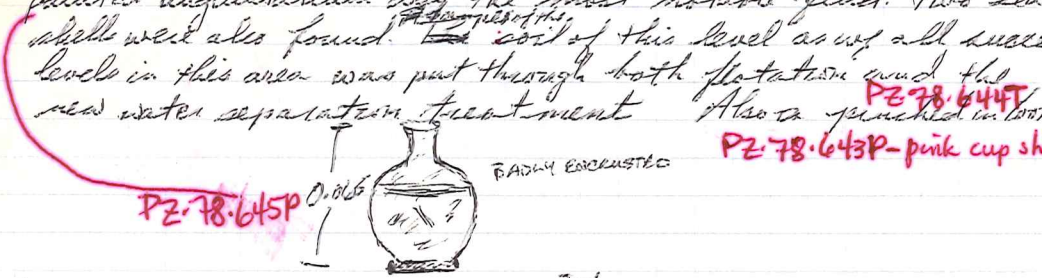
Work begun late yesterday has now been completed. The identification of the structure as a well is beyond doubt. There is a circular tile ^{CASSON} ~~casson~~ below the tile walls exposed yesterday. This ^{CASSON} ~~casson~~ was specifically made as a well lining and has a slight lip around its upper edge. There is a ^{sq.} rectangular opening in the south-east side of the ^{CASSON} ~~casson~~ for water to flow out, ^{another} ~~it~~ ^{it}. Material consisted of eleven coarseware shards including two handles one large enough to belong to a ~~hydra~~ ^{hydra}. The bottom of the well is now appropriately filled w/ water, and it will no doubt reach its ancient level w/ the removal of the pump.

- 5th Level 3, Bath's PZ 78.651 PL
~~There are large stones~~ A wall composed of large field stones has appeared at the bottom of the level. They extend south fr. the SW corner of the well. There is another conc. of stones 2.0 east of the wall. This conc. however does not seem to be a wall. The soil to the west of the wall and to the east of the conc. of stones is virgin earth. As first observed by Michael Gussino these stones make a lined channel from the source of water*. The material ~~has definite~~ ^{is} definitely archaic w/ ~~numerous~~ a few Ionic cup frags and two ~~am. base frags~~ ^{frag} of votive cups. * Two stones to the east of the wall seem to be part of a crosswall.



K¹-4 Level 3, BATT. 4 SOUNDING ^I ~~within room~~. PZ-78.642P

Work now continued which was begun on July 8 and 15. (For notes on previous work see Engle's notes on July 8 and Prof. Carter's notes on July 15.) Soil is a sandy grayish brown, Munsell 2.5Y 5/2 moist, clay w/ a few small pebbles and some streaks of red sand scattered throughout the matrix. ~~At~~ several large tile frags. and some stones has appeared at the bottom of the batt. The pottery consists of various coarseware and glaze ware sherds. An intact painted unguentarium was the most notable find. Two sea shells were also found. ^{fragments of the} Soil of this level as w/ all success levels in this area was put through both flotation and the new water separator treatment. Also a pinched in ¹⁹⁷⁰ PZ-78.644P



STRATIGRAPHIC LEVELS SIGHTED AT K¹-1 @ -7.16 m.

- K¹-4 Level 3, BATT. 4 Sounding ^I ~~within room~~
- NW corner - 7.87 m.
 - Center - 7.87 m.
 - SE corner - 7.77 m.
- M¹-5 Well
- Worn Stone - 8.02 m.
 - Top of S. tile course - 8.50 m.
 - Top of cassin - 8.85 m.
 - SE weep hole in cassin - 9.09 m.

1-4 level 3, Batt. 5 Sounding ~~in~~ ⁱⁿ room
 Soil remains the same grayish-brown clay. Two pointed
 metal objects of ~~unknown~~ similar configuration and
 unknown use have been found, 0.088 + 0.10 m long.



PZ-78.650M
 (catalogued under L-5, L.3, B.5)

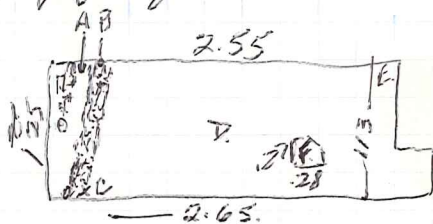
STRATIGRAPHIC LEVELS CONT.

M-5, level 3, Batt. 5

- A. Stone on top of wall near apparent crosswall - 9.07m.
- B. ~~the~~ FIELD IN SW CORNER - 9.37m.
- C. EAST GROUP OF STONES - 9.29m.
- D. LARGE BLOCK SOUTHEAST EXTENT OF
 FAIX, M-10 - 8.69m.

4 Level 3, Batt. 5 Sounding ~~in~~ ⁱⁿ room **PZ-78.647 PL**

A line of tiles running north-south has been found
 near the west side of the sounding. There is one long course
 0.28m wide w/a another less well preserved conc. of tiles
 0.18m to the west. The long course is composed of stalked
 tiles w/a few stones also incorporated into it. The workers
 have ident. it as a chan water channel wh. is very plausible. It
 seems to run towards the small room in N-4, Room I, found
 in 1947. Further soundings should help to clarify its ~~location~~
 relationship to other areas. There is relatively little material.
 Numerous courseware sherds w/ some glaze ware frag incl.
 a large frag of a fine small black glaze plate. **PZ-78.648P**



PZ-78.649SS - 21.VII.78
 SEED SAMPLE

PZ-78.677SS - 15.VII.78
 FLOTATION SAMPLE

STRATIGRAPHIC LEVELS SIGHTED FIC KIT-1 @ 7.10m.

1-4 Level 3, Batt. 5 Sounding ~~in~~ ⁱⁿ room.

- A. Space betw. tile courses - 8.10m
 - B. N. end of eastern course - 7.93m
 - C. S. end of eastern course - 7.91m
 - D. Center of sounding - 7.97m
 - E. Top of block in E. half of sd. - 7.86m
- NE course of sd. - 7.97m

78.654PL 655B

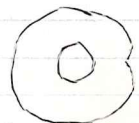
Sounding II PZ. 78.638PL
Sounding is in Room.

M1-3,-4 Level 3, Batt. 1



Sounding now begun in section of Celeste's room which is ~~south~~ of the old irrigation canal. There was a tile fall present throughout much of the top of the batt. The soil was a ^{sandy} grayish brown, M. 2.54 3/2 moist, clay as found above, in sounding in L'-4. White concretions were very noticeably present because the soil was drier. There ~~was~~ were carbon lenses scattered throughout the soil assoc. w/ the tile fall. The material was predom. coarseware sherds w/ a few black glaze sherds present. Most notable find was a sem. coarseware lid.

PZ. 78.640B - 1 small shell



0.037-1



0.015

PZ. 78.639P

M1-3,-4 Level 3, Batt. 2 ~~Sounding in Rm.~~ Sounding II
begun. no pottery? Soil cont. to be grayish brown sandy clay. The content of red sand though was noticeably higher.

29

78.660Pn 661B (shells) 662Pn

July 24, 1978

M-3, -4 Level 3, Batt. 2 Sounding w/in Room Sounding II
Batt. completed wh. was begun on last Friday.

The soil remains as previously discussed. There are
no tile frags in the matrix and virtually no
material, only ~~frag~~ ^{pieces} coarseware sherds. As noted
last week soil is being taken from these areas for
use in the water flotation and separation devices.

The soil in this area will always be taken fr. the
SW corner of the area, which corresponds to the part of
this sounding in M-3, 1.00m x 0.60m. Small sherds, etc.
found through water separation will simply be
included in the pottery lot, and the seed samples found
by water flotation will be kept separately.

A few sea shells and 3 poss. lithics were all that was found here.

STRATIGRAPHIC LEVELS SIGHTED FR. K'1, -1 @ -7.16m (h.i. 1.475) w. 5.

M-3, -4 Level 3, Batt. 2 Sounding w/in Room

- No SIGHTINGS TAKEN
- M-3, -4 Level 3, Batt. 2 Sounding w/in Room
- NE corner - 8.265m.
- SE corner - 8.255m.
- Center - 8.245m.
- SW corner - 8.205m.

M-3, -4 Level 3, Batt. 3 Sounding w/in Room 662Pn

Soil is a sandy brown, M. 7.54R 4/2 moist, clay
w/a relatively high quantity of red sand scattered
throughout the matrix. Some carbon lenses were present
in the matrix. Only material found were three large terra cotta
frag. either fr. roof tile or poss. a large storage vessel.

STRATIGRAPHIC LEVELS SIGHTED FR. K'1, -1 @ -7.16m

- M-3, -4 Lvl. 3, B. 3 Sounding w/in Room
- NE corner - 8.415m.
- SE corner - 8.415m.
- Center - 8.405m.
- SW corner - 8.385m.

M¹-3,-4 level 3, Batt. 4 Sounding w/in Room. **667PL** Sounding II
Soil continues to be brown w/ an increasing sand content as you move toward the bottom of the batt. The amount of red sand in the matrix also increases towards the bottom of the batt. These ~~are~~ continue to be carbon lenses scattered throughout the matrix. There were no finds in this batt. except for one ^{coarseware} sherd arrow w/ a group of stones 1.30m from the west side of the sounding and situated next to the north edge of the sounding. The exact nature of these stones is unclear. They are too few to bedding a pavement and don't actually appear to be a wall; ~~They~~ however the presence of the sherd would seem to indicate some cultural activity. Work has been abandoned in this area for the time being; and other soundings begun. If time allows this sounding may be carried in deeper. The prospect of uncovering further things in this sounding seems doubtful in spite of the small group of stones and one sherd.

RATIGRAPHIC LEVELS SIGHTED FROM Kⁿ 1,-1 @ -7.16m.

M¹-3,-4 level 3, Batt. 4 Sounding w/in Room Sounding II

NE corner - 8.545 m.

SE corner - 8.565 m.

Center - 8.575 m.

SW corner - 8.535 m.

Group of stones - 8.505 m.

M¹-2,-3 level 3, Batt. 4 Sounding #IV **663PL**
Work was begun in this area on July 8 for a full discussion of this sounding; level see the notes of July 8.
~~Shallow batt. under wall was pavement.~~ This was a very shallow batt. There was a pavement at the bott. of the level in the north 1.15-1.30 m. of the sounding. There is a ~~deep~~ circular depression, 0.30m diam. in the NE corner of the area. It is assumed that this pavement layer is to be associated w/ the walls around the sounding. ~~The~~ The site architect has drawn the pavement and photographs have also been taken of it. When

Sounding III is completed, this pavement will be removed and the sounding completed. The material consisted of various ~~coarse~~ small coarseware and black glaze sherds.

-5 Sounding up in "Spring House" - Material gotten through water separation. **653PL**

When this sounding was made virtually no potsherds were found. The running of sample of soil from this area through the water separation device has proved to be the most successful use of this process. Numerous small sherds were recovered, ~~but~~ however these finds don't help in dating the well. Only two sherds were ~~not~~ coarseware, ~~and~~ one was a black glaze sherd, the other was a grayware sherd.

-3, -4 ~~Sounding~~ Level 3, Batt. 1 Sounding III

This sounding began to allow recording of Sounding IV, Level 3, Batt. 4. ~~It~~ will be completed before Sounding IV due to wheelbarrow considerations. The soil is the same sandy grayish brown, M. 2.5TR 5/2 moist, clay as encountered in the other sounding. There are numerous streaks of red sand and some carbon lenses present in the matrix. This ~~is~~ sounding as the others is using 1977 level design. i.e. Level 3 = the level of the till fall and below.

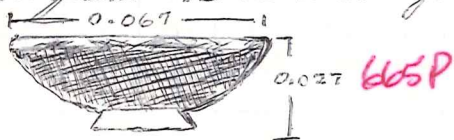
Numerous tile fragments were present in this level. The NW corner of the area had an especially high content of material. (Soil was also taken for this area for water flotation and separation.) Two pieces of lead and a small bronze coin were among the finds in this area. I believe that the coin is Greek, ~~however~~ ^{78-641M} Brian Athin has pointed out the extreme rarity of bronze coins in Magna Graecia. The coin is extremely corroded, so this question may never be solved. Gordon Pate is attempting to clean the coin to enable some solvent. The pottery from today's work will be ~~combined~~ combined w/ the pottery found tomorrow in completing the batt.

July 25, 1978

M1-3-4 Level 3, Batt. 1 Sounding III. 668P 669P 670P 671P

Work completed from previous day. A small tile course which appears to be some sort of wall has appeared 1.10 m. from the ~~sub~~ west edge of the sounding. It is c. 0.025m. wide and its maximum length is c. 1.35m. This tile course is lightly constructed and could have supported little. It is not well preserved and only one course seems to survive. It may have served as the foundation of a partition wall. The material is c. mrs of coarseware and black glaze sherds (Batt. of the 24th & 25th were seraphined). ~~It~~ ^{Three unribbed black} ^{to glaze sherds along w/} ^{fragments of heavy, sherd} ^{then sep.}

M1-3-4 level 3, Batt. 2 661P Sounding III. The small tile course found in the previous batt. will be left. First the area in the sounding to the west and latter the area to the west will be excavated. One of first finds was an intact small black glaze bowl found 1.10 m. ~~west~~ east of the tile course and 0.75m. ~~west~~ from the sounding's south boundary.



STRATIGRAPHIC LEVELS SIGHTED FR K1,1 @ -716

Level / Feature	Height
M1-2-3 level 3, Batt. 4 Sounding IV	
WNW corner	8.25m. - 8.29m.
Bottom of depression in pavement	8.27m. - 8.44m.
S. edge of pavement, center	8.36m. - 8.39m.
SE corner	- 8.37m.
M1-3-4 Level 3, Batt. 1 Sounding III	
WNW corner	- 8.25m.
N. edge of tile course	- 8.29m.
S. edge of tile course	- 8.36m.
Center	- 8.36m.
NE corner	- 8.34m.

11-3, -4 Level 3, Batt. 2 Sounding III

soil is still a grayish brown clay however there has been a significant increase in the amount of red sand in the matrix. Some of the soil is so shot through w/ reddish sand that its color is a reddish brown. Carbon lenses are ^{also} still present. A large black glaze mesh frag. has been found w/ a palmette design. Numerous stones have appeared at the bottom of this batt; there are several large (0.15-0.25 m l.) flat stones along w/ smaller ~~stone~~ river stones and a few field stones. In the ~~south~~ NE corner of the area are several tiles and a few large field stones. These later stones and tiles at first glance appear to be part of a wall, but I fell sure that they are a fall. There is too much soil betw. the various stones and tile, also one of the stones is resting on ~~what~~ ~~seems to be~~ like a lichen frag. The other stones in the sounding may ~~well~~ be part of a pavement. There are a few sherds and tiles frags mixed in w/ the level. In the area west of the ~~rest~~ tile course left in batt. 1 more stones have appeared which appear to belong to ^{the} pavement encountered to the east. The soil in the area is ~~is~~ a grayish brown as in the adjacent area except in the South E. corner of this area. There the soil is brown-dark brown, M. 7.5 th 4/2 moist, sandy clay w/ red sand and many lenses of black silt in the matrix. I have previously ident. these black lenses as carbon, but Leonard has identified them as the remnants of decayed material. There is relatively little material in this batt, at least 50% less than the previous batt. It consists of various small black glaze and earthenware sherds in addition to the above listed special finds. amount of
The general ^{amount} appearance of the stones and the "soil" ~~is~~ betw. the conc. of stones leads me to believe that all the stones in this area are simply part of a fall.

4

STRATIGRAPHIC LEVELS SIGHTED FR K¹,¹ @ -7.16 m.
M¹-~~3~~-4. Level 3, Batt. 2 Sounding III (Area E. of tile c. in B. 1)

NW corner	- 8.46 m.
SW corner	- 8.63 m.
Center	- 8.60 m.
NE corner	- 8.49 m.
SE corner	- 8.55 m.

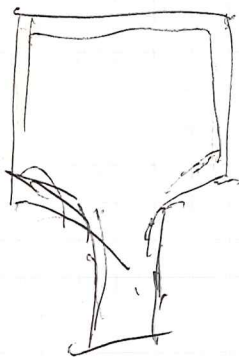
682 PL
683 T (B.L.)
684 B
686 PL
 July 26, 1978
 This will now be 4659
 as long as range of it is
 below the first p.

M-2, 3 Level 4, Batt. 4 Sounding IV
 The pavement discovered in the last batt. is man made being removed. *The level of stones is shallow, therefore it is most likely pavement rather than an alluvial deposit. *The soil is sandy gray-brown, M. 2.5T 3/2 moist, w/ ~~many~~ many streaks of red sand in the matrix. *The planned nature of the circular depression in the pavement also strongly indicates that it was man made. A clump of material, small black glaze & earthenware sherds, ~~has~~ been found immediately north of the depression and below the pavement. Some of the sherds are charred and there are some carbon lenses in their vicinity. Alfredo Gallatelli thinks that this is the indication of a hearth. Alfredo has also pointed out that a cone of red sand under the pavement is the remains of a decomposed sandstone rock decomposed by water w/ iron conc. present in it. Also there was a large amount of red sand in the NE corner of the sounding wh. both Alfredo and Leonardo identified as having leached down w/ rain from the top of the hill. A few stones which are apparently from the lower course of the circular pavement depression were the only feature in this level. *Material consisted of various earthenware and black glaze frags with a few bone fragments of wh. Leonardo ident. as part of a bull horn. and one punched in type bonweight.

STRATIGRAPHIC LEVELS SIGHTED FR. K11-1 @ -7.16m.

- 1-2, -3 Level 4, Batt. 4 Sounding IV
- NW corner -8.48 m.
- NE corner -8.50 m.
- Center -8.52 m.
- SE corner -8.49 m.

3, -4 Level 3, Batt. 2 Sounding III → *in area west of hill corner left at Batt. 1.
 Work on batt. now complete. Numerous large stones are present on the bot. of the batt. These are most likely part of a fall as w/ the other stones in the area to the east of the clump left at Batt. 1. Operation today was simply



500
470 BC

like Ionic Temples
@ Metc.

Mason's mark archaic
stone like Temp

DRAWING AND DATING DONE
BY PROF. D. ADAMESTEANU DURING
A VISIT TO SITE. REFERS TO
TILE FOUND IN O1-7

OTHER NOTES TAKEN BY SUPERVISOR
IN REFERENCE TO PROF. ADAMESTEANU'S
OBSERVATIONS.

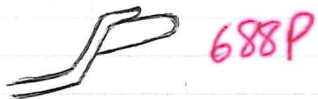
cleanup, therefore no new material was found. Work has been stopped for the time being in this sounding, and our attention has turned once again to Sounding IV.

M1-2, -3 Level 4, Batt # 2 Sounding IV

There was a scatter of stones below the pavement and above the bott. of the batt. This was definitely a scatter of stones most likely natural rather than a pavement. Its highest concentration was towards the north of the sounding.

-2, -3 Level 4, Batt. # 2 Sounding IV 687P 5/6

The soil in this batt. remains the grayish-brown sandy clay as encountered before, except in the NW corner where there is a c. 0.75 x 0.50 m patch of strong brown, M. 75R 5/6 moist, very sandy clay. This different colored soil is most doubt linked w/ the cone of red sand noted in this area earlier. A field stone pavement appeared at the bottom of the batt. which is clearly a continuation of the 1st c. pavement to the north. Many frags. of a lekane were found in situ. 0.10 m fr. west side of sounding and 0.90 m. from north side of sounding. The vessel should be restorable from the amount of fragments, and it appears to be of an archaic form to the ~~area~~ supervisor w/ its small rim and large loop handles.



The pavement is sloping to the north wh corresponds to the ~~general~~ general positioning of pavement just to the south. The pavement also appears in the NW corner. The frag. lekane was sep. fr. the pavement proper by c. 0.05-0.08 m soil, some sherds and sm. tall frags were found lying directly on the pavement. The material was predominately earware w/ a few blackglaz sherds. There was one 6th type rim frag fr a sm. Ionic cup and also what appears to be a body sherd from a similar cup. ~~The~~

STRATIGRAPHIC LEVELS SIGHTED PER R'14-1 @ - 7.16m.

M¹-2-3 Level 4, Batt. 2 Sounding IV

- NW corner - 8.55 m.
- NE corner - 8.46 m.
- Center - 8.63 m.
- SE corner - 8.63 m.
- SW corner - 8.79 m.
- ~~Frags. ^{in situ} ~~leliane~~~~ - 8.71 m.

M¹-2 6th Pavement exc. in 1977, pt. even w/ SW corner - 8.86m.

- 2 Level 3, Batt. 1 + 2 Sounding IV (0.30 - 0.35 deep)

Includes 0.35m strip along north of Sounding IV. 680px
 Soil grayish brown sandy clay w/ many stones and much red sand in the matrix. Little material most of it found in southern strip of S.I.V.; coarse sand and a few black glaze sherd; also a ^{tiny} flat piece of bronze or copper w/ a serrated edge. Virtually no finds in S.V. proper. Stratigraphic levels were not taken of these batt. The sm. extension of Sounding IV differed fr. the rest of that sounding and it mat. for cons. was kept w/ S.I.V. The density of stones and red sand in the matrix was especially high in the actual area of S.I.V.

- 2 Level 3 Batt. 3 Sounding IV. 701px

Grayish brown sandy clay w/ some red sand, but much less than in prev. two batt. Virtually no stones in matrix whereas bef. they were very numerous. Pavement and tiles have appeared at batt. The 6th pavement has been reached w/ this batt., further work will be ~~not~~ required tomorrow. The pottery found today will be kept ~~at~~ w/ the remaining path from the level base to m.

M¹-2 Level 3, Batt. 1 + 2 Sounding IV.

Various cleaning operations were carried out by ~~us~~ in this area in 1977 by Prof. Colund. Little soil was removed in these operations and I have ~~not~~ ^{set} the designated this sounding as beginning at Level 3, Batt. 1. (Level 3 = the area below the ~~to~~ tile fall w/ top of wall as based on 1977 terminology). The level design. is def. correct, the batt. design. is ~~not~~

arbitrary and may not correspond exactly to the 1977 season.

July 27, 1978
701 PL

M1-2 Level 3, Batt. 3 Sounding V
Pavement at 6th c. level ~~was~~ reached yesterday has now been fully exposed. Several tile frags and potshards incl. a large rim and wall frag por of a lekane were lying on the pavement. Also a few of the stones exposed appear as though they may be part of a fall. There is no doubt however that this is a continuation of the 6th c. pavement. The pavement in this sounding slopes down to the west which ^{basically} corresponds to the slope of the pavement excavated in 1977 just to the south.

The pavement in this sounding and Sounding IV is slightly finer texture than the pavement immediately south.
ATIGRAPHIC LEVELS SIGHTED FR. K' 1, -1 at -7.60m
1-2, -3 0.35m. extension of Sounding IV to the S; @ the level of pavement.

- SE corner -8.67m.
- SW corner -8.81m.

M1-2 Level 3, Batt 3 Sounding V
SW corner -8.86m
Center -8.82m.
NW corner -8.90m.
NE corner -8.78m.

1-2 6th c. Pavement excavated in 1977
in line w/ SW corner of Sounding IV -8.84m
in line w/ SW corner of Sounding V -8.88m.

1-3 level 3, Batt. 1 Sounding VI
NW corner -7.48m.
NE corner -7.48m.
Center -7.52m.
SW corner -7.54m.

3 level 3, Batt. 1 Sounding VI 689P (low) 692 (low) 693 (low)
Tile fall of structure is throughout this level. Numerous large tile fragments were present. Soil was the same grayish brown, M. 2.51 5/2 moist, sandy clay as encountered in the other soundings. Little red sand was present in the matrix. Several large stones which ~~in situ~~ fell fr. the wall were also found in the tile fall. There was very little material: seven small coarseware sherds and four black glaze sherds incl. the base of a cup. *A large fragment

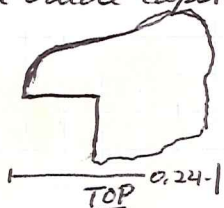
2 Troweling in the interior of the "Basin" 694P 695SS
Yesterday Michael Quaresimo and today Robin Austin have troweled the interior of this "basin." Several people had already worked on it in 1977, but Prof. Carter felt that added clarification was needed. A few small sherds and bone frags. were recovered. Michael Quaresimo found a few small fragments of plaster w/ the spaces left by straw visible in the edges. Some stones were found at the bottom, but there was no clear cut floor. The previous work in this area makes all the finds in this area suspect.

A plastic bag from the 1977 season was found several centimeters down in the basin covered w/ soil which exemplifies the disturbed nature of the basin 692P (low) 693 (low) 693 (low)

3 level 3, Batt. 2 Sounding VI 690P 691Tz (low) 692P (low) 693 (low)
Soil remains unchanged. Some tile fragments still scattered through the matrix. In the SE corner, 0.25m fr. east and 0.25m from south ends of sounding, several frags of a coarseware vessel incl. a large base frag. were found. There was more material than in the prev. batt, prob. because we are nearing the floor. Various black glaze and coarseware frags were present. There was also an oblate loomweight and a small circular loomweight, 0.045m. *including a fragmentary shallow black glaze bowl (salt s.)

K¹⁻³ Level 3 Batt. 1 Sounding VI
A large roughly round stone w/ a notch cut in one side was among these stones. The notch seems cut to accom. a corner or beam. The stone may have been used to support a column, or possibly served

a crude capital. Michael Herasino says this is a thrown piece broken.



1-3 level 3, Bath. 3 Sounding VI 696PL 697B
698P (Frag. bowl)
 Soil continues to be grayish brown sandy clay. A concentration of small stones ~~is~~ appeared at the bottom of the bath.

This level of breccia may be the floor of the room, a fine textured pavement. Tiles fragment and potsherds were present directly above this layer of small stones.

The density of stones is not consistent and it decreases in as you move towards the north. Some tile frags and sherds are mixed in w/ the breccia which may indicate that this is a ~~fall~~ not a pavement. The material was a mixture of coarseware and black glaze frags. There was a ~~to~~ base frag & another joining frag of a black glaze bowl. Also there was a miniature black glaze bowl, 0.018 m. h. ~~is~~ wh. must have been a votive or toy?

There are numerous tiles or end etc. in w/ stones wh. would lead to the assumption that this is a fall. Also the legs of a seated votive plaque, or poss. a doll.

Also could the ~~so~~ miniature cup be a toy rather than a votive

Traces of paint on legs



700P

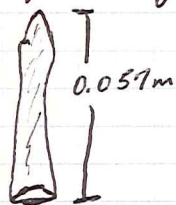
0.075



699T

L¹-3 Level 3 Batt 1 Sounding VIII 702 PL 703P 704P 705T (CLW) 706B
 Soil is usually grayish brown sandy clay. Some tiles present in matrix. Some tile frags and sm. stones visible at bott. of batt. Relatively little material. a mix of a few coarseware and black glaze sherds. Notable finds were a small ~~bow~~ circular loomw., 0.043 m. diam ident to the one found in S VI Lev. 3, Batt 2, and a small terracotta arm w/ some traces of paint. This arm is of same material as legs found in S. VI Lev. 3, B. 3. I felt certain that the arm and leg go together. ~~But~~ Could these belong to a doll rather than a votive? The two small loomweights, the miniature cup, and figure frags all be toys and indicative of a child's presence in this room. I don't know if these are toys or not, but it deserves some looking into. The sun may have gotten to me.

STR. LEVELS FR. K¹, -1 @ -7.16



707T

NW Corner - 7.64
SE Corner - 7.65

Sounding VIII

L¹-7 Level 7, Batt 1 Sounding below pavement. Prof. Carter ordered this sounding to determine if there ~~was~~ were any features below the pavement in this area. The supervisor chose a 1.50 x 1.50 sq. directly in the center of this sq. for the sounding. The pavement was only one layer deep. There were no finds below the pavement. It was virgin soil, a fine olive gray, M. 51 5/2 moist clay w/ virtually no stones or pebbles in matrix. Sounding was terminated after one batt.

713 PL 714 B

L¹-7, -8 Level 6, Batt 1 Cleaning Pavement Surface. Finds left for phot. removed, incl. a smelting spout and what was ident. as the frag. of a antefix spout by Prof. Adams.

715T (ANTEFIX FR.) 717P (Smelting Sp)

NOTE ON SOUNDINGS —

Sounding I (Celeste's Room) L'-4

Boundaries - North - L'; East - F'; West - E; S. - Canal

Dimensions. 2.8 X 1.4 X 2.8 X 1.2 w/ ext. in SE corner

Sounding II M'-3,4

.25 X .65

Boundaries - N: Canal; E: F; W: E; S: 6'

Dimensions: 2.85 X 1.65 X 2.8 X 1.0

Sounding III M'-3, -4

Boundaries N: 6'; E: F'; W: G; S: Baulk N' AXIS

Dimensions 3.70 X 1.10 X 4.05 X 2.65

Sounding IV M'-2, -3

Boundaries N: 6" E: G W: 6" S: A

Dimensions ~~2.15 X 1.55~~ 2.15 X ^{1.55} ~~1.55~~ X 2.15 X 1.55;

S. EXT. 1.55 X 1.80 X 1.55 X .80

Sounding V M'-2

Boundaries: N: Top of 6; S: A; E. S. IV

Dimensions 1.00 X .80 X 1.00 X .80

Sounding VI L'-3

Boundaries N: L'; E: E; S: D

Dimensions: 2.00 X 1.0 X 2.0 X 1.0

Sounding VII L'-3

Boundaries: N: L' N: C S: CANAL

Dimensions. 2.0 X 1.20 X 2.0 X 1.20

Sounding VIII M'-7

Center of S. @ center of sq.

Dimensions 1.50 X 1.50m.

- 01-7-8 level 6, Batt 1 ^{709T} ^{710P2} Cleaning of Pavement Surface
 Mostly cov. some fine ware interesting tiles
- 01-7 Level ~~6~~ ⁴, Batt 2 ^{708T}
 Spout tiles frag. removed.

K' 1, -1

Multiple levels taken — h.w. 1.50m @ -7.16

LAST DAY

July 28, 1978

TALKED CARTER OUT OF EXC.

CLEANUP WORK. DRAWING OF SECTIONS, PUMP REM.

STRATIGRAPHIC LEVELS SIGHTED FR P' 1, -1 @ -9.58 h.w. 1.505

6 N' - 7 Level 6, Batt. 1

12 NW Corner

10 SW Corner

19 Center

108 NE corner

N' - 8 Level 6, Batt. 1

~~108~~ Center

0 Center below pavement

64 SW Corner

01-7 Level 6, Batt. 1

N' - 7 NW corner

25 Center

23 SE corner

01-8 Level 6, Batt. 1

207 NE corner

210 Center

N' - 7, - 8 Level 4, Batt. 2 E.S.

6 NE corner on pavement

67 N. tip of shadow

6 NW corner on pavement

61 SE corner

Lev. 6 B. 2
 Center
 232

124