

PIZZICA
1977

Pigna Jolly

QUADERNO DI

PIZZICA 1977

CANAL

Ingrid Eellund
Jack Englett



è un quaderno Pigna!

PZ 1976-1977 refers to the earlier notebook for Pizica, Canal area.

In cases where areas were excavated at different times, the stratigraphical sequence should be correlated with the dates of excavation. This is especially true for level 3 in the squares where walls were cleaned. Since level 3 usually designates a level with several bathubas (more like 'scrapings') there should probably be made a distinction between an upper and lower segment of this level (note 9 July 1977).

TABLE OF CONTENTS

Thursday June 23	3-5
Friday June 24	1-11
Monday June 27	12-23
Tuesday June 28	24-35
Wednesday June 29	36-43
Thursday June 30	44-51
Friday July 1	52-63
Saturday July 2	64-67
Monday, July 4	68-75
Tuesday July 5	76-85
Wednesday July 6	86-95
Thursday July 7	96-109
Friday July 8	110-117
Saturday July 9	118-119
Monday July 11	120-135
Tuesday July 12	137-147
Wednesday July 13	148-152
Thursday July 14	159-167
Friday July 15	168-175
Saturday July 16	176
Monday July 18	177-177
Tuesday July 19	179-179
Wednesday July 20	180-183
Thursday July 21	184-185
Friday July 22	187-187
Saturday July 23	188-189
Monday July 25	190-193
Tuesday July 26	194-197
Wednesday July 27	198-199
Thursday July 28	200-201
Friday July 29	202-203
Saturday July 30	204-205

SUMMARY

NOTES ON LEVELS - For a com-
cordance of levels see below pp. 211 ff
~~pp. 211 ff~~

N ¹ -6, 0 ¹ -6	level 4	p. 1, 81
M ¹ -6	level 1	3, 25
M ¹ -2	level 3	3, 5
N-S trench, E extension	batt.	- 7 ff.
M ¹ -4	level 3	27
L ¹ -4	level 3	37, 39
M ¹ -3	level 3	39, 45
N ¹ -7, 0 ¹ -7	level 2	45
N ¹ -7, 0 ¹ -7	level 3	91 91
L ¹ -3	level 3	l. 4 p. 155, l. 5 p. 159, l. 6 p. 161 55
M ¹ -3	level 4	59
M ¹ -4	level 3	65
N ¹ -5, 0 ¹ -5	level 4	71
	level 5	71
M ¹ -2, N ¹ -2	level 3	83
M ¹ -5	level 3	91
N ¹ -6, 0 ¹ -6	level 5	101
	level 6	115
M ¹ -6	level 2	111
N ¹ -8	l. 2, l. 3 p. 163, l. 4 p. 169, l. 5 p. 171	
	l. 6 p. 173	

NOTE ON SQUARES EXCAVATED

L ¹ -3	p. 55
L ¹ -4	p. 29, 37
M ¹ -1	p. 33
M ¹ -2	p. 3, 15, 27,
M ¹ -2, N ¹ -2	p. 83
M ¹ -3	p. 39, 45, 57, 69
M ¹ -4	p. 27, 41, 47, 65,
M ¹ -4, M ¹ -3	p. 87
M ¹ -5	p. 91, 97, 111
M-6	p. 3, 13, 25, 111, 121, 141, 149
N ¹ -3	p. 29
N ¹ -3, N ¹ -4	Room 1 p. 49, 59
N ¹ -4	p. 5, 69
N ¹ -5, 0 ¹ -5	p. 71, 77, p. 189
N ¹ -6, 0 ¹ -6	p. 1, 81, 101, 113, 127, 137, 151
N ¹ -7, 0 ¹ -7	p. 39, 45, 53, 89, 99, 153, 159, 173
N-S Trench, East Extension	p. 7, 17, 31

IV

$N'-8, O'-8$ p. 163, 169

$N'-2, N'-3, O'-2, O'-3$ p. 135, 145, 155, 177

$N'-1, N'+1, N'-2, O'+1$ p. 167, 175

$N'-1, O'-2, O'-3, P'-2, P'-3, O'-1$ p. 179

$O'-3, O'-4, P'-3, P'-4, O'-1$ p. 181, 187, 191

$N'-4, O'-4, P'-4$ p. 185, 195, 199

$N'-1$ p. 185, 187

$N'+1$ p. 187

$L'-1, H'-1$ p. 189, 193

$O'-2$ p. 123, 197

drawing 29, 30 (RMG)

Friday June 24, 1977 (Giovanni
Bellischi)

work continued in several areas:

N'-6, O'-6

level 4 (level 4 = level at or
below level of tile fall in
N'-6 + conglomerate blocks
in N'-5) PZ 77.813 P

PZ 77.555 T Finds: note statuette frag.-
esp. a very nice head
PZ 77.621 T from south of O'-6, N'-6 -
level 4. This is slightly
unusual because most of
the statuettes frags. have
come from the north east
and central area of the
square

PZ 77.815 T
statuette frags - including a
frag of a many-breasted
Athenis type.

PZ 77.814 P

M'-6

level one, batt. 1 PZ 77.794 P

Finds: byzantine coin - silver
 founds in level 1 PZ 77.676
M/T

level 1, batt. 2

Finds: statuette frag.
PZ 77.620 T

M'-2 (actually excavated June 23, 1977)

area south and west of wall A cleaned. W. end of wall clearly defined. Heavy tile fall immediately N of wall A. Tile fall exposed to the S and W of wall 5 to clarify relation between these two elements and the wall 5, running E-W in M'-2.

level 3 - tile fall around wall A

Finds:

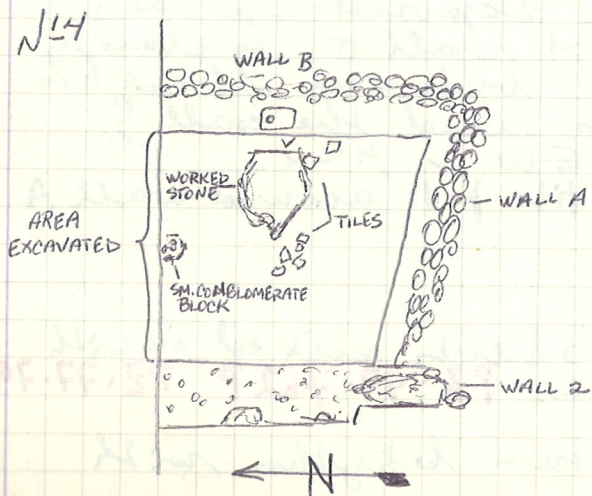
Some sherds mixed in with the tiles. PZ. 77.762 P PZ. 77.791 B
PZ. 77.792 T
miniature lachrym with

criss-cross pattern (top missing)
found along the S edge of
wall A, between field stones.
Location: 0.25 m. from W
edge of wall. Several photo-
graphs taken in situ. PZ 77. 615 P

Levels: wall A - tile fall
over and around wall.
Same tile fall is below
wall 5, and over wall
6 (running E-W in M-2,
excavated in 1976)

below tile fall: large con-
centration of small pebbles -
though not thick enough
to constitute a pavement.
Rather a wash from
flooding of area?

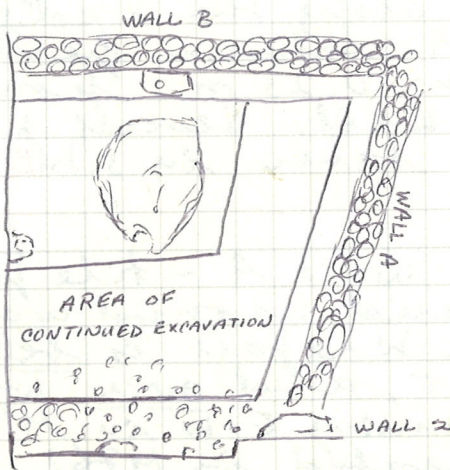
Very few shreds below
tile fall. PZ 77. 790 P



N1-4

Work begun to excavate AREA BOUNDED BY WALLS A, B,
+ 2. A section 1.00 x 0.85 m. was opened, and at a
depth of 0.07 m. (area had been down through level
2 by workmen at an earlier date) a worked
stone 0.40 x 0.38, a small conglomerate stone
c. 0.10 x 0.10, and several tiles were encountered.
Soil was hard and contained many stones and
pebbles. Pottery finds consisted of a few
coarseware fragments.

N¹-4, continued



North-South Trench East Extension =

Preparation for excavation, CROSS SECTION, EAST-WEST



drawing 37

N¹-4, continued.

In the area to the south of the worked stone (c. 0.36 x 0.85) the level was taken down 0.20 m. within 0.12-0.14 m. of the level of wall 2. A coarseware rim fragment and a small coarseware fragment handle were the only objects found in this level, once the few tiles at the top of the level had been removed.

Sounding carried on up to worked stone and along the south end of it. Ceramic finds were few. Stones appeared to be part of wall 2 rather than pavement. (cf. later work in area for determination of exact nature of these stones.)

NORTH-SOUTH TRENCH EAST EXTENSION -

Work began on an eastward extension of the North-South trench excavated in 1976. The extension was dug in arbitrary levels of battui, and the actual level of each batt. was taken. A strip of soil along the bank to the east of the extension was brought down first.

NORTH-SOUTH TRENCH EAST EXTENSION, BATT. 1

FEW FINDS DUE TO MUCH OF WORK BEING DONE IN VIRGIN SOIL. IN AREA NEAR WALL 6' (K'-3) 7 black figure sherds, one with the head of a male depicted, and an iron nail were found.

PZ-77-622 P/M

NORTH-SOUTH TRENCH EAST EXTENSION: ACTUAL LEVELS

ALL SIGHTINGS WERE TAKEN FROM L'-1 WHOSE LEVEL OF -7.36 m. WAS DETERMINED BY SIGHTING FROM M'-1 (-7.78 m). (POINT AT L'-1 WAS LOST IN SUBSEQUENT EARTH MOVING OPERATIONS) Point A corresponds to the northern edge of each level. Point B was even with the southern edge of the east-west sounding to the east of the trench. Point C was aligned with a stake c. 5.0 m. from L'-3. Point D corresponds to the southern edge of each level (except in BATT. 2 where point D was aligned with the SOUTH-EAST CORNER OF THE triglyph lying in the North-South trench. This point was abandoned since it was no longer in the area under excavation after batt. 2). The exact position of the points changed often according to the configuration of the trench, since the excavation attempted to follow the contours of the pit.

BATT. 1

A = -6.75 m.
 B = -6.52 m.
 C = -6.95 m.
 D = -7.18 m.
 (B sit. on raised area)

BATT. 4

A = -7.065 m.
 B = -7.075 m.
 C = -7.125 m.
 D = -7.125 m.

BATT. 7

A = -7.47 m.
 B = -7.46 m.
 C = -7.49 m.
 D = -7.50 m.

BATT. 2

A = -6.615 m.
 B = -6.735 m.
 C = -7.005 m.
 D = -7.195 m.

BATT. 5

A = -7.185 m.
 B = -7.205 m.
 C = -7.305 m.
 D = -7.265 m.

BATT. 8

A = -7.66 m.
 B = -7.61 m.
 C = -7.62 m.
 D = -7.64 m.

BATT. 3

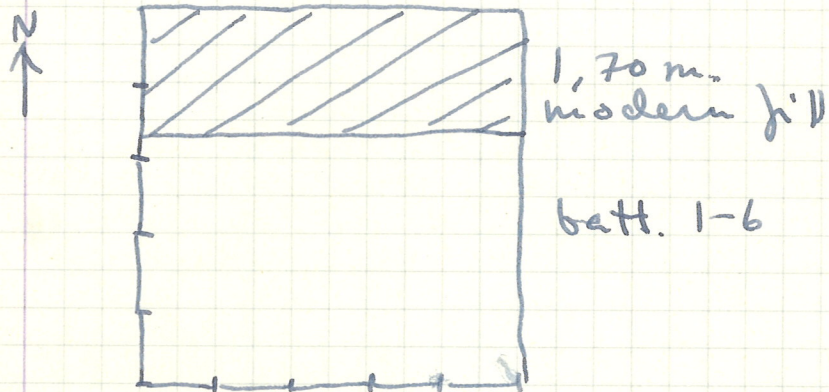
A = -6.905 m.
 B = -6.965 m.
 C = -6.945 m.
 (D not taken)

BATT. 6

A = -7.34 m.
 B = -7.33 m.
 C = -7.35 m.
 D = -7.37 m.

BATT. 9

A = -7.80 m.
 B = -7.79 m.
 C = -7.74 m.
 D = -7.78 m.

M¹-6 level 1Monday June 27, 1977M¹-6 level one: dark soil, some stones

level 1, batt. 2

Findels: PZ 77.847 SS PZ 77.848 P

statuette frag. PZ. 77.626 T

level 1, batt. 3

Findels: PZ 77.849 P

coarse ware

PZ 77.850 T statuette frag. (or perhaps architectural TC)

level 1, batt. 4 (dark blackish-brown soil)

Findels:
coarse ware PZ 77.851 P

part of round loom weight broken at holes PZ 77.852 T

part of spindle wheel round hole in middle intact

statuette frag. (?)

haul left where modern
fill was thrown in/as
in 11'-5. - batt. 5 and 6
consequently only in S
part of trench.

level 1, batt. 5

PZ 77.853P

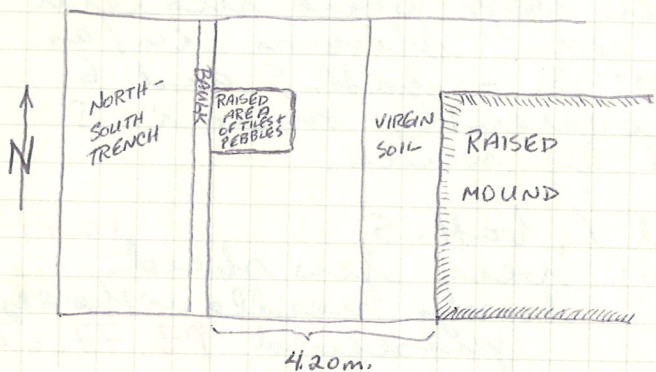
Finds: very few beads
bronze needles with eye
preserved PZ. 77.627M

11'-3

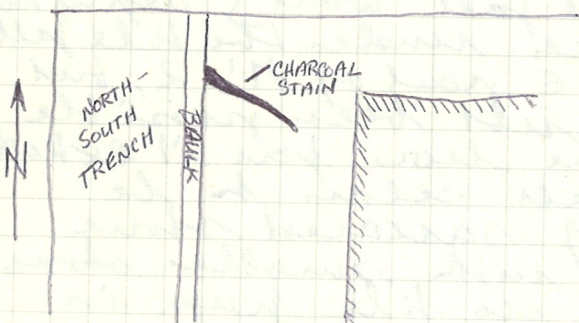
continued cleaning of wall 5
and tile fall. wall 5 definitely
continues under the tile fall
in the E part of 11'-2, but
it has not been possible
to define how far it extends.
This wall seems to be
built of squared stone
blocks with smaller stones
as fill - no tile frag. in
wall visible.

careful cleaning of the S end
of wall 5 seems to show
that the wall is built
from several layers of neatly
placed tiles. W. of wall: 0.40m.
The surrounding tile fall
at the W. edge makes the
wall look considerably wider
than it is.

NORTH-SOUTH TRENCH EAST EXTENSION, BATT. 2.



NORTH-SOUTH TRENCH EAST EXTENSION, BATT. 2



North-South Trench East Extension, BATT. 2 77-818P

Area of virgin soil defined and second battuta 77-820P was begun in west section of trench. A strip of earth 1.40m. in width was left on the eastern side of the trench. A level even with that of the 1976 excavation was reached upon the completion of battuta 2.

A raised area of tiles and stones in high concentration c. 2.0 X 1.5 m. was brought down separately from the rest of battuta 2.

The finds in the raised area consisted of Arretine ware fragments, coarseware fragments, grayware fragments, one circular loomweight, and several animal bones

At base of battuta 2 next to eastern boundary of level a concentration of stones, pottery, tiles fragments, and large animal bones was uncovered. The bones may have been cow bones. This concentration of material was temporarily left in place, and was removed on June 28, cf. p. 23.

Below the raised area of tiles and stones at the base of battuta 2 a large charcoal stain was uncovered. It appeared to be the remains of one or several fairly large chunks of burnt wood (area of stain c. 1.60 X .30m). The charcoal concentration consisted primarily of darkly stained soil, however some limbs and lenses were present. There was a large number of rootlets in the deposit. The stain was approximately even with point B and extended downward into battuta 3. A SAMPLE WAS TAKEN.

PZ-77-649 SS

This charcoal stain was partially excavated in 1976 and was photographed at that time, cf. 1976 notebook. Stain is at a slant running south-east.

BATT. 1
RAISED AREA
OF STONES &
TILES
77-816P
77-817P
77-819B

NORTH-SOUTH TRENCH EAST EXTENSION, BATT. 3

There was a heavy concentration of pottery fragments and bone in and around the area of the charcoal stain. Brown soil outside of stain area contained a smaller concentration of finds. (The excavator did not have a Munsell chart during the work in this area, therefore the soil color descriptions are far from scientific. I intend to use the Munsell chart in conjunction with a description of the baulk of the EAST EXTENSION IN THE HOPE THAT THIS WILL AT LEAST PARTIALLY MAKE UP FOR THE INITIAL LACK OF THE CHART)

77-821P
77-822P

Finds in this battuta include Arretine, grayware, and coarseware fragments, several amphorae handles, a loomweight^(circular), animal bones, and some chunks of iron slag. An Arretine BOWL BASE WITH THE STAMP OF A MANUFACTURER ON ITS INTERIOR AND A GRAFITTO ("H") on its bottom was found in this battuta, PZ-77-629P Also a terra sigillata fragment with a relief design of a rosette and leaf was found, PZ-77-628P

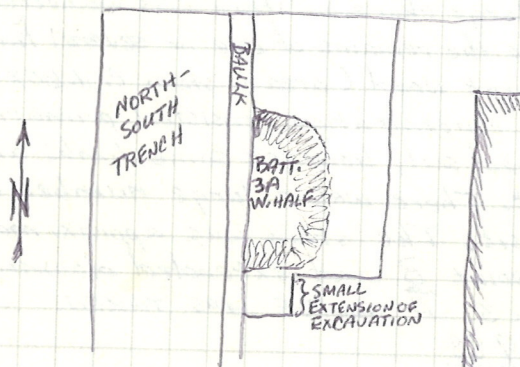
NORTH-SOUTH TRENCH EAST EXTENSION, BATT. 3A WEST HALF

THIS BATTUTA ORIGINATED DUE TO CONFUSION ON THE PART OF THE EXCAVATOR. WHAT AT FIRST APPEARED TO BE THE BEGINNING OF BATTUTA 4 WAS IN FACT A LEVELING OUT OF BATTUTA 3. On the advice of the chief archaeologist at the site the material was kept separate and given its present designation. The soil c. 1.00-1.50m. east of the baulk and bounded by the virgin soil has a darker hue than the "golden" virgin soil. It is a brown with a certain amount of black- "light chocolate."

77-823P
77-824T

NORTH-SOUTH TRENCH EAST EXTENSION, BATT. 3, continued. A small southern extension of the trench was made and brought down to base of battuta 3.

NORTH-SOUTH TRENCH EAST EXTENSION BATT 3, 3A WEST HALF



NORTH-SOUTH TRENCH EAST EXTENSION, BATT. 3 continued

The charcoal stain was still ~~was~~ evident at the base of battuta 3.

NORTH-SOUTH TRENCH EAST EXTENSION, BATT. 3 - CARBON SAMPLE

SAMPLE TAKEN FROM LARGE CHARCOAL STAIN IN THE TRENCH.

LIMBS AND LENSES WITH SOME ROOTLETS PRESENT. ACTUAL

LEVEL = -6.965 m. 77-650 S.S.

NORTH-SOUTH TRENCH EAST EXTENSION, BATT. 3A WEST HALF - CARBON SAMPLE

HURRIED SAMPLE TAKEN DURING THE DIGGING OF THE BATTU

MANY ROOTLETS PRESENT AND SAMPLE HAD TO BE KEPT IN A

PLASTIC BAG DUE TO LACK OF ALUMINUM FOIL. SAMPLE MAY BE

USELESS. ACTUAL LEVEL = -6.945 m. 77-651 S.S.

NORTH-SOUTH TRENCH EAST EXTENSION, BATT. 4. 77-825P, 77-826T

NUMEROUS COARSEWARE SHERDS, PLUS A FRAGMENT OF A

PIN ~~77-630M~~ 77-630M 77-

BEGINNING WITH BATT. 4 OF THE EAST EXTENSION THE MATERIAL

FOUND NORTH OF THE CHARCOAL STAIN WAS KEPT SEPARATE

FROM THE OTHER MATERIAL OF THE BATTUTA. THIS OPERATION

WAS MAINTAINED IN ALL FOLLOWING BATT. WHERE THIS

DIVISION EXISTED.

NORTH-SOUTH TRENCH EAST EXTENSION, BATT. 4 NORTH HALF 77-827P

FINDS FEW IN NUMBER: COARSEWARE FRAGMENTS OF VARIOUS

TYPES, ONE LARGE FRAGMENT OF A GRAYWARE BOWL, SMALL

FRAGMENT OF ARRETINE WARE, ONE CIRCULAR LOOMWEIGHT,

AND SEVERAL PIECES OF IRON SLAG. 77-828T 77-829M

NORTH-SOUTH TRENCH EAST EXTENSION, BATT. 5

"CHOCOLATE" SOIL AND CHARCOAL STAIN WERE THE MOST PRODUCTIVE

AREAS IN TERMS OF FINDS. "CHOCOLATE" SOIL EXTENDS SOUTHWARD

FROM THE CHARCOAL STAIN AND TAPERS TO THE WEST.

CARBON LENSES AND LIMBS ARE PRESENT BOTH TO NORTH AND

SOUTH OF MAIN CHARCOAL CONCENTRATION.

FINDS WERE PREDOMINATELY COARSEWARE INCLUDING AMPHORAE

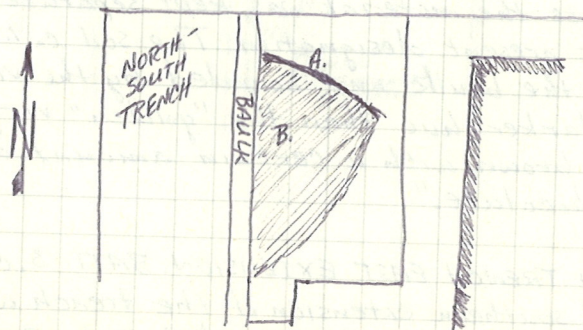
FRAGMENTS, A RIM+WALL FRAGMENT OF A LEKANE, A LONG, NARROW

NECK, PLUS ARRETINE FRAGMENTS, GRAYWARE FRAGMENTS,

A LOOMWEIGHT, A BRONZE PIN OR NEEDLE, + ANIMAL BONES INCLUDING A JAW BONE.

77-742M 77-830P 77-831M 77-832T

NORTH-SOUTH TRENCH EAST EXTENSION BATT. 5



A. - CHARCOAL STAIN
B. - "CHOCOLATE" SOIL

NORTH-SOUTH TRENCH EAST EXTENSION BATT. 5. NORTH HALF

FEW FINDS: ONE PIECE OF IRON SLAG, ONE SMALL ARRETINE FRAGMENT,
A FEW GRAYWARE FRAGMENTS, VARIOUS COARSEWARE FRAGMENTS INCLUDING
A LEKANE RIM. 77-833P

NORTH-SOUTH TRENCH EAST-EXTENSION: CONC. OF MATERIALS IN BATT. 2.

CONCENTRATION OF MATERIALS LEFT IN SITU FROM PREVIOUS DAY WERE
REMOVED, cf. p. 17. FINDS CONSISTED OF A FEW COARSEWARE SHERDS,
A GRAYWARE FRAGMENT, TILE FRAGMENTS INCLUDING ONE LARGE
TILE FRAGMENT WITH A RIM, AND TWO LARGE ANIMAL BONES,
POSSIBLY FROM A COW.

NORTH-SOUTH TRENCH EAST EXTENSION, BATT. 6

RELATIVELY FEW FINDS WERE UNCOVERED: COARSEWARE &
GRAYWARE FRAGMENTS, ONE SMALL ARRETINE SHERD, AND
SEVERAL ANIMAL BONES. 77-834P 77-835T

NORTH-SOUTH TRENCH EAST EXTENSION, BATT. 6 NORTH HALF

FINDS WERE PREDOMINATELY COARSEWARE, SOME GRAYWARE
FRAGMENTS INCLUDING A FRAGMENT OF A STRAINER, A
BLACK GLAZE BASE OF A CUP OR LEKYTHOS, TWO CIRCULAR
LOOMWEIGHTS, SOME IRON SLAG AND ANIMAL BONE.

77-836P, 77-837S, 77-838T

Tuesday June 28, 1977

M¹-6

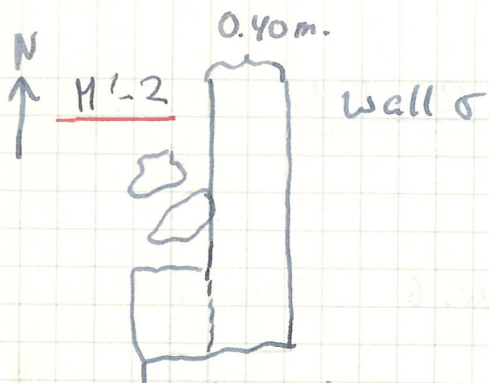
level 1, batt. 6 PZ 77.887 P

Finds:

coarse ware, spindle whorl (perhaps
 used as loom weight - w. hole)
 purpose: to bring the trench
 down to the same level as
 M¹-5. (2 sheds from batt. 7)
 PZ 77.857 P

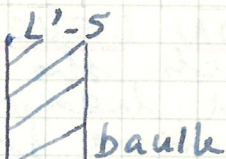
NOTE ON LEVELS: Throughout this
 trench the soil was dark
 and heavy, with no dis-
 tinctive features. The levels
 were therefore distinguished
 only by battuts. Further
 differentiation might be
 made by studying the
 sections in this and the
 surrounding trenches.

While work continued in this
 square, the bulldozer was
 raising immediately to the
 E. The E edge of the trench
 was chewed away before I
 had a chance to study the
 levels, but the S bank is
 still intact.
 wheelbarrow ramp in SE corner

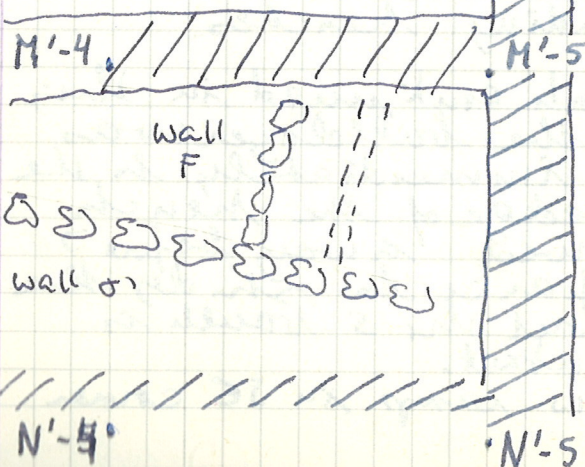


artificial or real corner?
(edges of tiles are deceptive!)

L'-4



bault



M'-4
level 3

cut down - level 1, batt. 1-6
course ware. PZ 77.886 T

M'-2

wall 5 - continued cleaning of surface. Outline of wall now clear. It remains to be seen what the blocks of roughly hewn stones along the W edge of the wall are doing there.

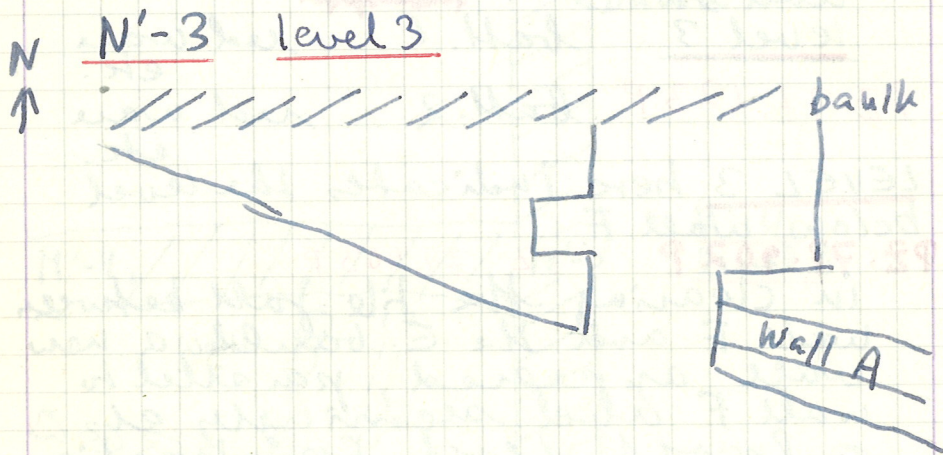
M'-4

test area - defined by wall 5', F and bault between M'-4 and M'-5 ~~level 3~~
level 3 batt. 1 red ware etc.

PZ 77.623 P batt. 2 red ware etc.

LEVEL 3 here indicates the level below wall F.

PZ 77.902 P PZ 77.903 P
in clearing the tile fall between wall F and the E. bault a new wall appeared, parallel to wall F and seemingly at a lower level. Construction: field stones and tiles. In order to clarify the situation the test cut was continued N of the modern fill - in square L'-4 (some photographs mistakenly labeled M'-4)



L'-4 area between wall F,
northern part and N-S
baulk

Findings: PZ. 77. 867 P

level 3, batt. 1 large bone
frag.
black glaze
red ware PZ. 77. 868 P

level 3, batt. 2 PZ. 77. 876 P

level 3, batt. 3

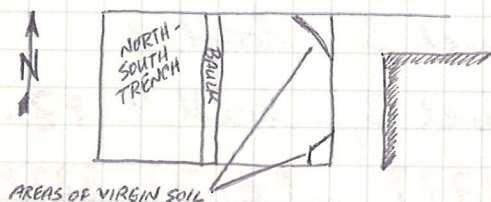
level 3, batt. 4 PZ. 77. 880 P

PZ. 77. 877 P PZ. 77. 882 P.

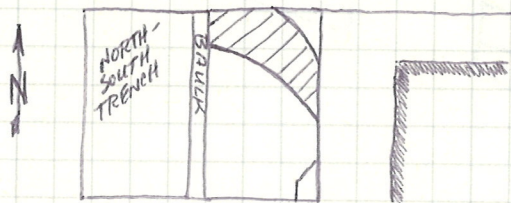
N'-3 removal of soil forming
triangle between baulk
and small square room
S of E-W sketch of wall A.
level 3, batt. 1

drawing 38

NORTH-SOUTH TRENCH EAST EXTENSION BATT 7



NORTH-SOUTH TRENCH EAST EXTENSION BATT 8



▨ - VIRGIN SOIL LEFT UNEXCAVATED AT BATT 7.

NORTH-SOUTH TRENCH EAST EXTENSION BATT 7 77-869P 77-870T

POTTERY FINDS WERE FEW: COARSEWARE FRAGMENTS INCLUDING ONE LARGE FRAGMENT OF A COOKING BOWL WITH A HANDLE (LOOKS LIKE A HANDLED LEKANE), A FEW GRAYWARE FRAGMENTS, ONE SMALL APRETINE FRAGMENT, ONE LOOMWEIGHT, ONE BONE.

77-871P

NORTH-SOUTH TRENCH EAST EXTENSION BATT 7 NORTH HALF 77-872S

VERY FEW FINDS: SOME COARSEWARE + GRAYWARE FRAGMENTS, A FEW FRAGMENTS OF ANIMAL BONE, AND ONE PIECE OF IRON SLAG.

NORTH-SOUTH TRENCH EAST EXTENSION BATT 7 NORTH HALF CARBON SAMPLE

77-652.55

LARGE CHARCOAL LUMB, C. 0.05 m. sq., found c. 2.30 m. from northern extremity of trench. located in yellowish, "GOLDEN" CLAY MATRIX WITH SOME ROOTLETS PRESENT. ACTUAL LEVEL = - 1.49 m. DUE TO LACK OF ALUMINUM FOIL THIS SAMPLE WAS TEMPORARILY STORED IN A HARD PLASTIC CONTAINER.

NORTH SOUTH TRENCH EAST EXTENSION BATT 7

TWO TRIANGLES OF VIRGIN SOIL WERE LEFT AT THE LEVEL OF BATT. 6 IN THE NORTHEASTERN + SOUTHEASTERN CORNERS OF TRENCH. VIRGIN SOIL IS A PURE CLAY OF A YELLOW, "GOLDEN" COLOR.

THE SMALL SOUTHERN EXTENSION OF THE TRENCH IS NO LONGER UNDER EXCAVATION, cf. pp. 18-19.

NORTH SOUTH TRENCH EAST EXTENSION BATT 8

FINDS ONCE AGAIN WERE VERY FEW IN NUMBER: TWO GRAYWARE FRAGMENTS, THREE LEKANE FRAGMENTS, RIM OF A CASSEROLE OR MORTAR WITH AN APPLIED SCALLOPED HANDLE, AND OTHER ASSORTED COARSEWARE FRAGMENTS. THREE CIRCULAR LOOMWEIGHTS WERE FOUND. TWO WERE SIDE BY SIDE, AND THE OTHER WAS VERY NEARBY. THEY WERE LOCATED AT A POINT C. 2.00 m. from the SOUTH EDGE OF THE TRENCH AND C. 0.40 m. from its east edge. A LAMP FRAGMENT WAS FOUND BY THE EXCAVATOR IN A WHEELBARRON OF SOIL FROM THIS LEVEL. GRAYWARE TYPE CLAY, PART OF NOZZLE, SIDE, + TOP SURVIVES. SMALL ROLLED HANDLE ON SIDE AND FIGURED DESIGN ON TOP. APPEARS TO BE ROMAN. APPARENTLY CAME FROM SOUTHERN HALF OF TRENCH.

ONCE AGAIN A LAYER OF VIRGIN SOIL WAS LEFT UNEXCAVATED.

77-874T 77-873P 77-875P

NORTH-SOUTH TRENCH EAST EXTENSION BATT. 8 NORTH HALF ^{77-878P}
_{77-879T}

Only about a dozen sherds were found including a large grayware base fragment, a "king size" circular loomweight (d. = 0.105 m.), and one piece of iron slag.

NORTH-SOUTH TRENCH EAST EXTENSION BATT. 9

THERE WAS NO NORTH HALF SUBDIVISION IN THIS LEVEL, SINCE IT WAS ENTIRELY UNDER THE BURN LAYER. ONCE THIS BATTUTA HAD BEEN REMOVED IT APPEARED THAT BATT. 8 ALSO HAD BEEN UNDER THE BURN LAYER OR AT LEAST AT THE LOWEST EXTREMITY OF THE BURN LAYER.

77-881P

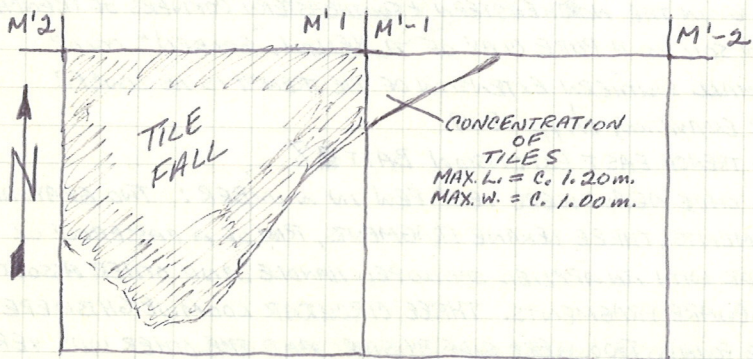
FINDS WERE FEW IN NUMBER INCLUDING THE USUAL COARSEWARE AND GRAYWARE FRAGMENTS, A CIRCULAR LOOMWEIGHT, ONE SMALL BLACK GLAZE SHERD AND SOME TILES WITH A GREEN-YELLOW COLOR. THE EXCAVATION WAS STOPPED AT THIS BATTUTA, SINCE AT THE TIME ONLY VIRGIN SOIL SEEMED TO REMAIN. HOWEVER EXAMINATION PROVED THIS ASSUMPTION TO BE FALSE. IF THERE IS TIME THE EXCAVATION OF THE EAST EXTENSION WILL BE CONTINUED, OTHERWISE IT WILL HAVE TO WAIT FOR THE FOLLOWING SEASON.

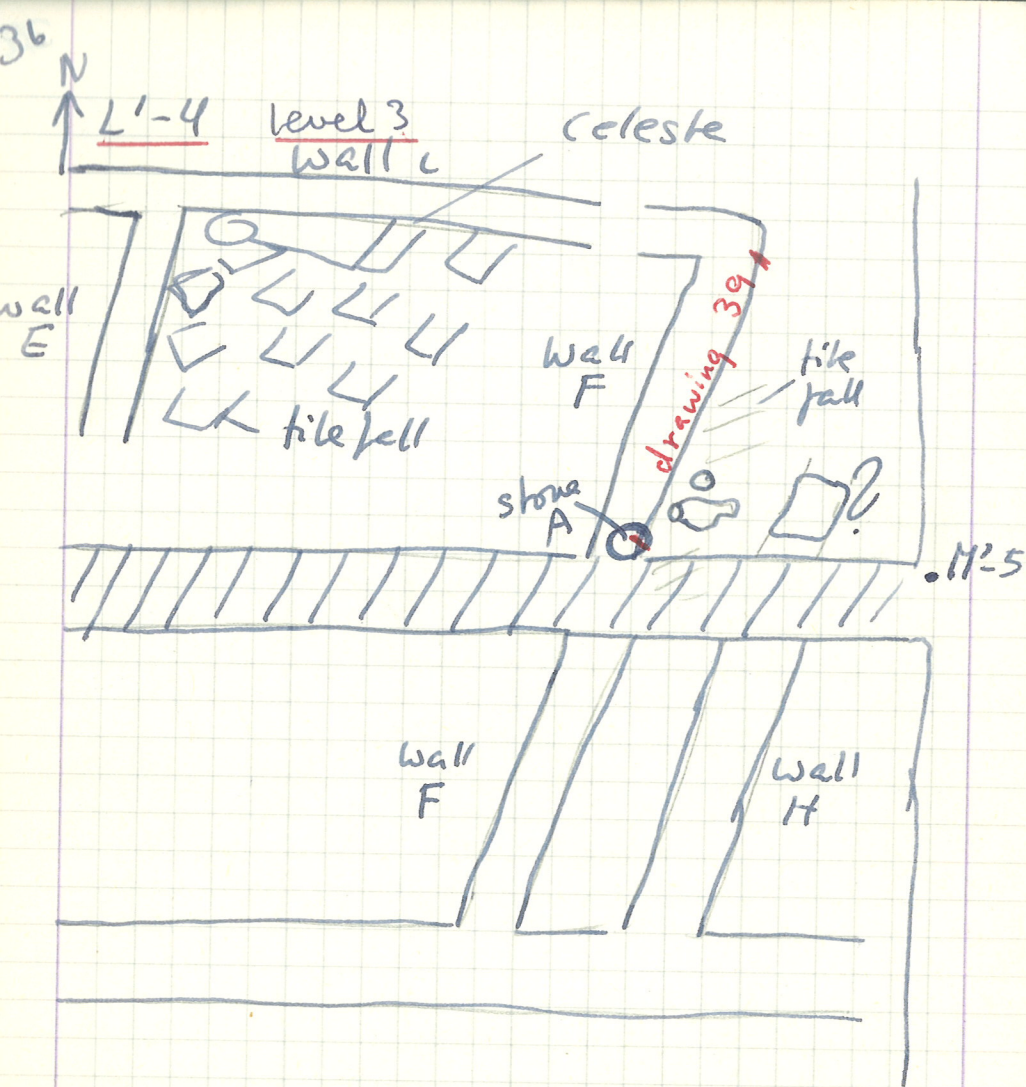
M¹-1 LEVEL 2 (LEVEL 1 EXCAVATED IN 1976)

LEVEL CONSISTED OF TWO BATT. AND WAS BROUGHT DOWN TO THE LEVEL OF M¹+1. NO CONTINUATION OF WALLS FROM M¹-2 WAS UNCOVERED AS ORIGINALLY HOPED. THE LARGE TILE FALL OF M¹, level 2, appears to have extended into the northwestern corner of M¹-1. In this corner there was a large number of tiles, however not in as great a concentration as in M¹+1. The tiles were removed by the workmen, and in retrospect the excavator should have urged more caution and retained the tiles in situ.

Material consisted of numerous coarseware fragments of various types and several black glaze fragments including the base of a cup and a rim fragment with a configuration similar to that of a lekane.

M¹-1, LEVEL 2





37

Wednesday June 29, 1977 (Pichoe Paolo)

A day in modern technology - the bulldozer working on all sides. Well-point system installed - copious photos - graphic documentation - all men occupied with pumps, except the two Alfredos.

L'-4 area of modern fill cleared.

level 3, batt. 4 red ware etc.

level 3, batt. 5

Findings: one small amphora and one small phiale found together at 0.55 m. s depth from stone A. 1.40 m. from stake at M-5 PZ 77.655

level 3, batt. 6 below level of vases. PZ. 77.882 P

possible continuation of wall H - one unrelated stone made it appear as if wall H continued N of the modern fill - However, it was surrounded by soil only, and was therefore removed.

NOTE ON LEVELS:

Level 3 was identified with the level of wall F and subdivided in battinas. As shown in the section the significant features are two tile falls. It should be noted that the two vases were found below the lower tile fall.

N'-7, O'-7

new square started. work slow since most of the workmen were busy with the pumping system.

PZ 77.888 P PZ 77.889 P PZ 77.899 P
PZ 77.900 P PZ 77.901 H

M'-3 level 3 - stones + tiles on and around walls

Find: cleaning of wall O' and E - between stones were found a small lekythos with checked decoration (photographs taken in situ - date unfortunately left out). PZ 77.632 P

miniature TC arm (doll's ?)

PZ 77.631 T

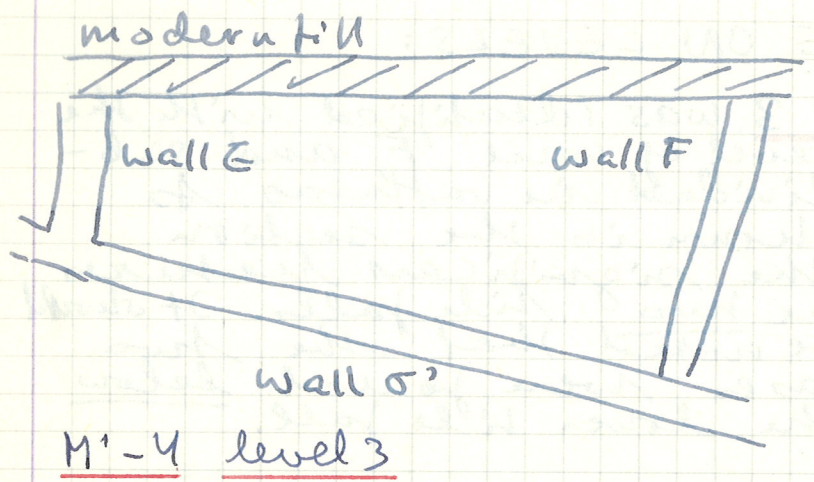
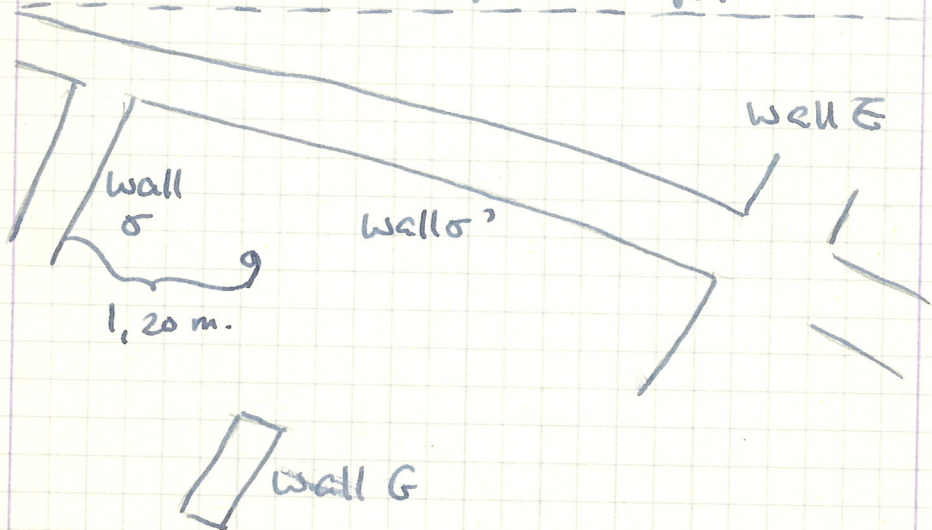


figure '8'-shaped loom weight
 PZ 77.654 T
 2 round spinelle wheels

test area M-4
 defined by modern fill,
 walls G, E, and F
 PZ 77.905 P

44
M'-3 level 3 modern hill



4
Thursday June 30, 1977

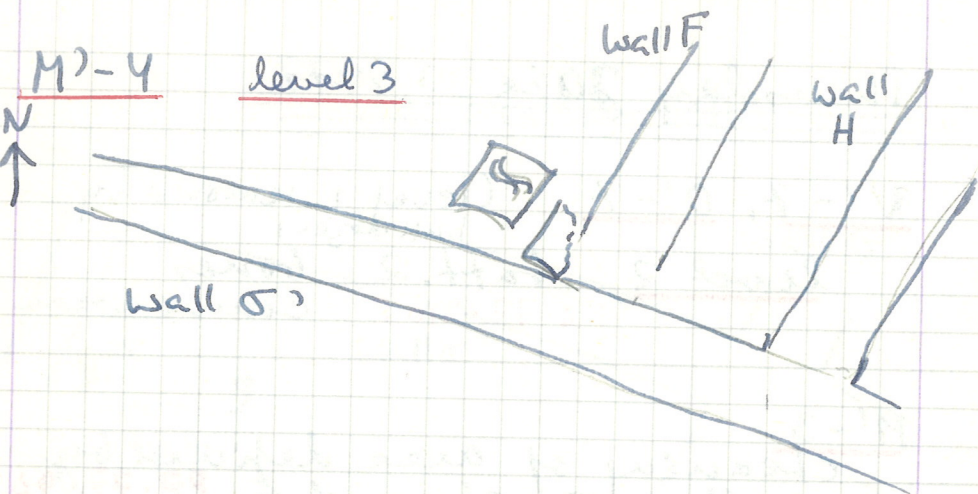
N'-7, O'-7 (level 1 removed by bulldozer)
level 2, batt. 2 bones
PZ 77.910 P coarse ware

M'-3
cleaning of area defined by walls sigma, sigma prime, and E PZ. 77.909
level 3, batt. 1 arm + frag. of doll PZ 77.670
PZ. 77.912 P level 3, batt. 2

Finds: volute-shaped finial PZ. 77.917 T
BF(?) shed - showing hindquarters of animal(?) PZ. 77.915 P

level 3, batt. 3

level 3, batt. 4 - immediately above concentration of pebbles ('pavement') PZ. 77.918



M¹-4

cleaning of E end of wall
S', N-S sketch of walls F
and H.

a jutting end eave -
wall H appears to be at a
lower level than wall F
and merges very readily
with wall S'. There is a
tile fall between and
around these walls.

Wall F can be defined
clearly only along the W.
edge, where it consists
of layers of gau tiles
and round field stones.
However, it does not
attach directly to the N
edge of wall S'. Instead,
there is a curved cover
tile with one long and
one short edge, preserved
which is actually below
the level of the wall.

Next to the cover tile is another
cover tile placed upside down
with a double S inscribed
on the surface.

PZ 77.907 P

PZ 77.908 P



CLEANING OF "PAVEMENT" NORTH OF ROOM 1, N'-3, -4.

IN BETWEEN WATCHING + PHOTOGRAPHING THE INSTALLATION OF THE WELL POINT SYSTEM THIS PAVEMENT WAS CLEANED BY THE EXCAVATOR.

SOIL SAMPLE TAKEN OF EARTH DIRECTLY ABOVE PAVEMENT.

SAMPLE IS 0.115 m. X 0.075 m.; h. = c. 0.05 m - 0.035 m.

SAMPLE LOCATION = 0.40 m. NORTH OF NORTH WALL OF ROOM 1.

ACTUAL LEVEL = - 0.90 From N'-3.

PURPOSE OF SAMPLE TO DETERMINE IF THE SOIL COMPOSITION WOULD INDICATE ITS NATURAL DEPOSIT BY A FLOOD OR WHETHER IT MAY IN PART HAVE BEEN PLACED BY HUMAN MEANS.

Friday July 1, 1977

N¹-7, O¹-7

level 2 - rich black soil,
few finds

batt. 3
Finds:

bones

coarse ware PZ 77.925 P
statuette frag. (?)

round spindle-whorl (?) with
phallic end (?)

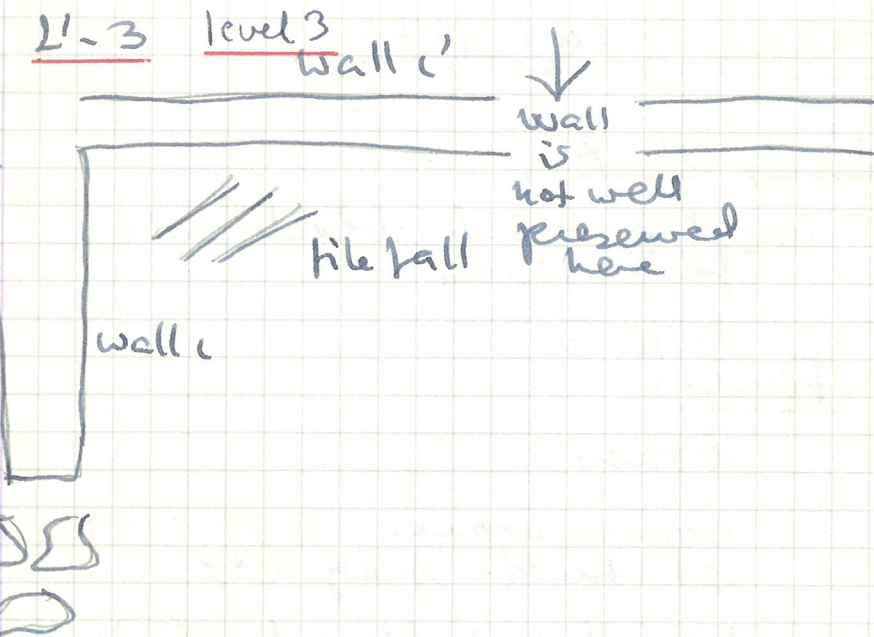
PZ 77.926 T round loom weight
chipped, with 2 holes

batt. 4

Finds:

large bone frag.
coarse ware
ribbed handle
heavy rim with incised
design of waves

loom weights: 3 - shapes:



- 1) pyramidal
- 2) figure 8 - one hole
- 3) round - two holes
- 4) round - two holes
- 5) round - three holes

cleaning of walls

L1-3

corner of wall c and c'

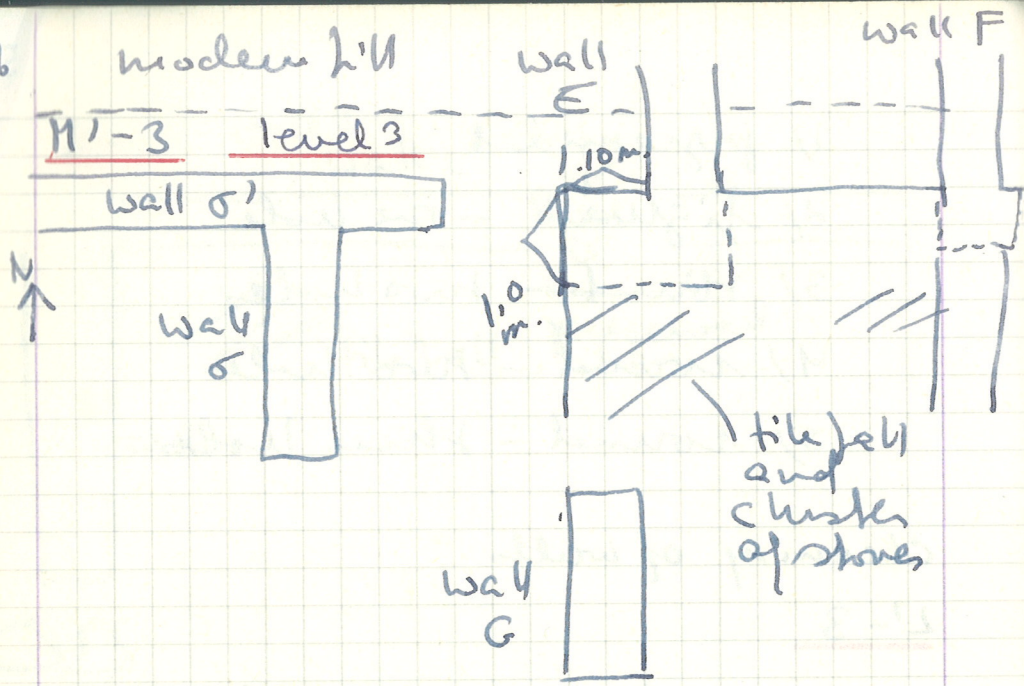
level 3 - tile fall around walls

fallen stones and part of heavy tile fall lifted
 it seems that wall c' has slumped from the pressure of the earth since the northern part is well preserved, whereas the southern edge tilts downwards.

conglomerate blocks and cluster of field stones at southern end do not seem to be part of wall

pottery: black glaze

PZ 77 923P red ware



M'-3

cont'd cleaning of area around wall sigma and E - more complicated than it seemed at first.

wall sigma and wall sigma' are now clearly identified - there is even a possibility that sigma continues N of the modern hill and links up with wall C.

relation between wall sigma' and wall E very complex - it seems almost as if the two walls overlap at slightly different angles

level 3 ball. 1

PZ. 77. 916P

red ware
black glaze
ribbed knob



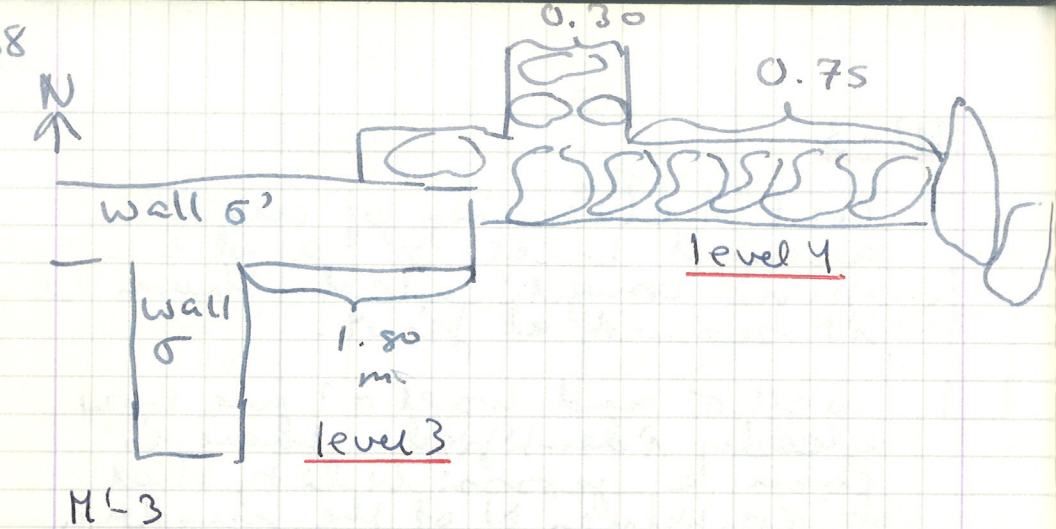
small black-glazed lid w. knob



level 3, ball. 2

bones
red ware
black glaze

PZ. 77. 919P



5

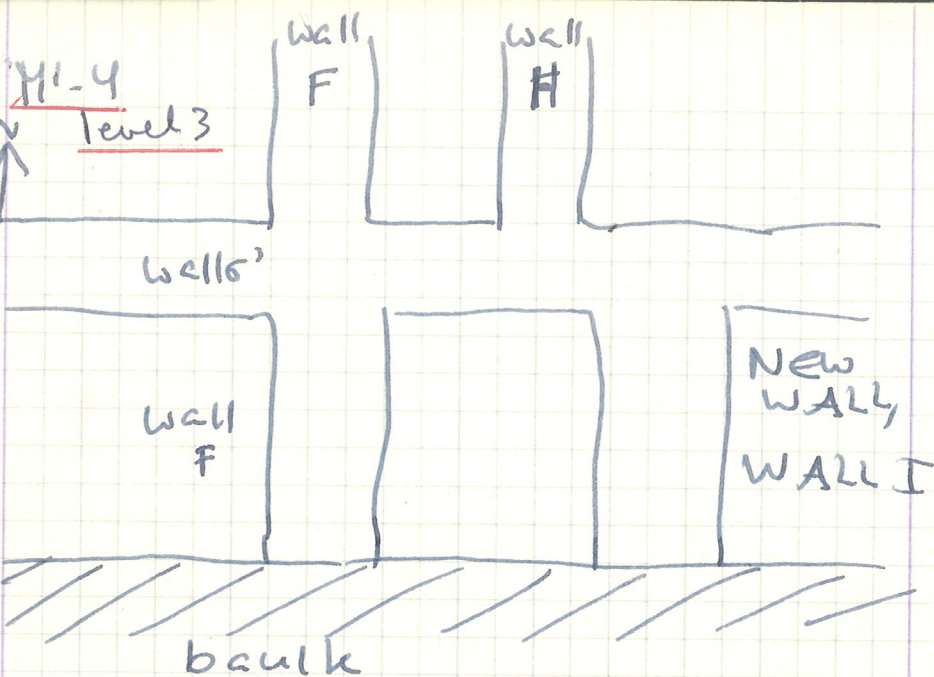
In clearing the area N of wall 5' up to the modern fall a curious feature was discovered.

a U-shaped construction of large stones - no tiles which seem to continue towards the N

this feature allowed the introduction of a new level which includes wall from the level of this structure and below it - LEVEL 4

level 4 (att.) red ware
black glaze
PZ. 77.924P

CLEANING OF "PAVEMENT" NORTH OF ROOM 1, N³-4
 FOR THE PAST TWO DAYS I HAVE BEEN CLEARING OFF THIS "PAVEMENT". THE "PAVEMENT" NOW APPEARS TO BE NOTHING MORE THAN PEBBLES DEPOSITED BY A FLOOD. THIS ALSO CASTS SERIOUS DOUBT ON THE PAVEMENT OF ROOM 1 WHICH IS AT THE SAME LEVEL. A primary reason for rejecting the identification of the pebble layer as pavement is the virtual lack of finds associated with it. Very few sherds were found and all were small in size. EXCAVATION OF THE "PAVEMENT" HAD BEEN CARRIED OUT VERY CAREFULLY IN THE HOPE OF PLOTTING THE LOCATION OF FINDS ON THE PAVEMENT. THE PAUCITY OF FINDS NEGATED THIS OPERATION. THE LAYER OF PEBBLES APPEARS TO BE PRESENT THROUGHOUT THE STRATIGRAPHY OF THE AREA. UNLESS FURTHER EVIDENCE IS FOUND, THE "PAVEMENT" MUST BE IDENTIFIED AS JUST ANOTHER PEBBLE LAYER DEPOSITED NATURALLY ON THE SITE.



Saturday, July 2, 1977 (Patio day)

M-4

clearing of area between wall σ' and bank between M-4 and N-4 structure of walls F and H identified clearly. also confirmation of F south of wall σ' . F is definitely of a much finer construction than H - could it be a later addition? (sugg. by J.C.)

an annoying new discovery - parallel to wall F, but E of wall H is another wall - labeled Wall I (w. 0.60m)

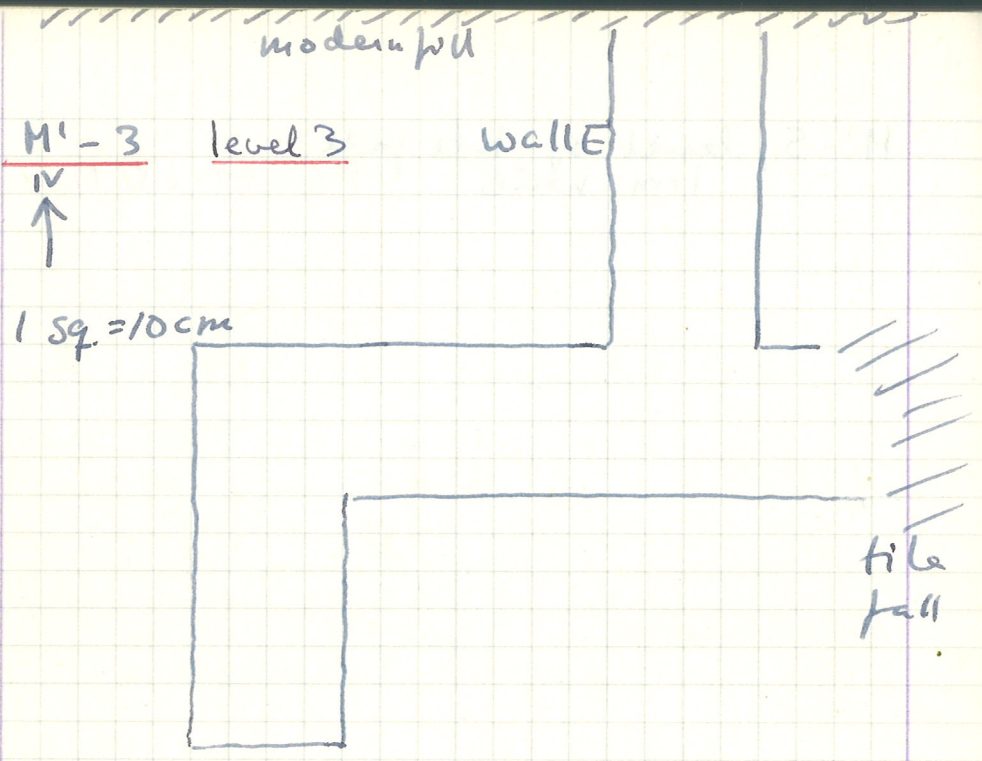
which extends to the S of wall σ' as far as the bank. (This whole area was cleared and the column base, etc. removed)

PZ 77.911 P PZ 77.913 P PZ 77.914 P
PZ 77.982 P

general cleaning and sweeping of site.

levels - relation of walls F, σ' and I and tile fall needs to be clarified - repeated finds are labeled level 3.

M-5, level of tide fall
iron nail PZ 77.681 M



Monday July 4, 1977

A red-white-and blue pyramid was reported, but dissolved before the excavators could take proper measurements and give a thorough description of the object.

M'-3

continued cleaning of walls O' and E. - wall E is clearly part of a structure with 2 90° angles, but it is not quite clear how they relate to wall O' - an intuitive impression is that wall E was built over wall O', but this theory needs to be confirmed stratigraphically

PZ. 77. 937P PZ. 77. 938M

N'-4

blocks of stone removed
cleaning of what seems to be S extension of wall F
tile fall } features need to be def.
wall A }

N'-5

level 5

bank

level 5



N'-5, O'-5

work cont'd in this square,
now sufficiently chiseled out
because of the pump

Levels: level 4 is indicated
by the large stones in
the E part of the square.
level 5 indicates material
found below this level.

PZ 77.705 P, PZ 77.706 P PZ 77.707 T

Level 5, batt. 1 begins
immediately below
layer of small stones
(pebbles) apparent in
the section between
N'-4, O'-4.

PZ 77.927 P Coarse ware
PZ 77.928 P

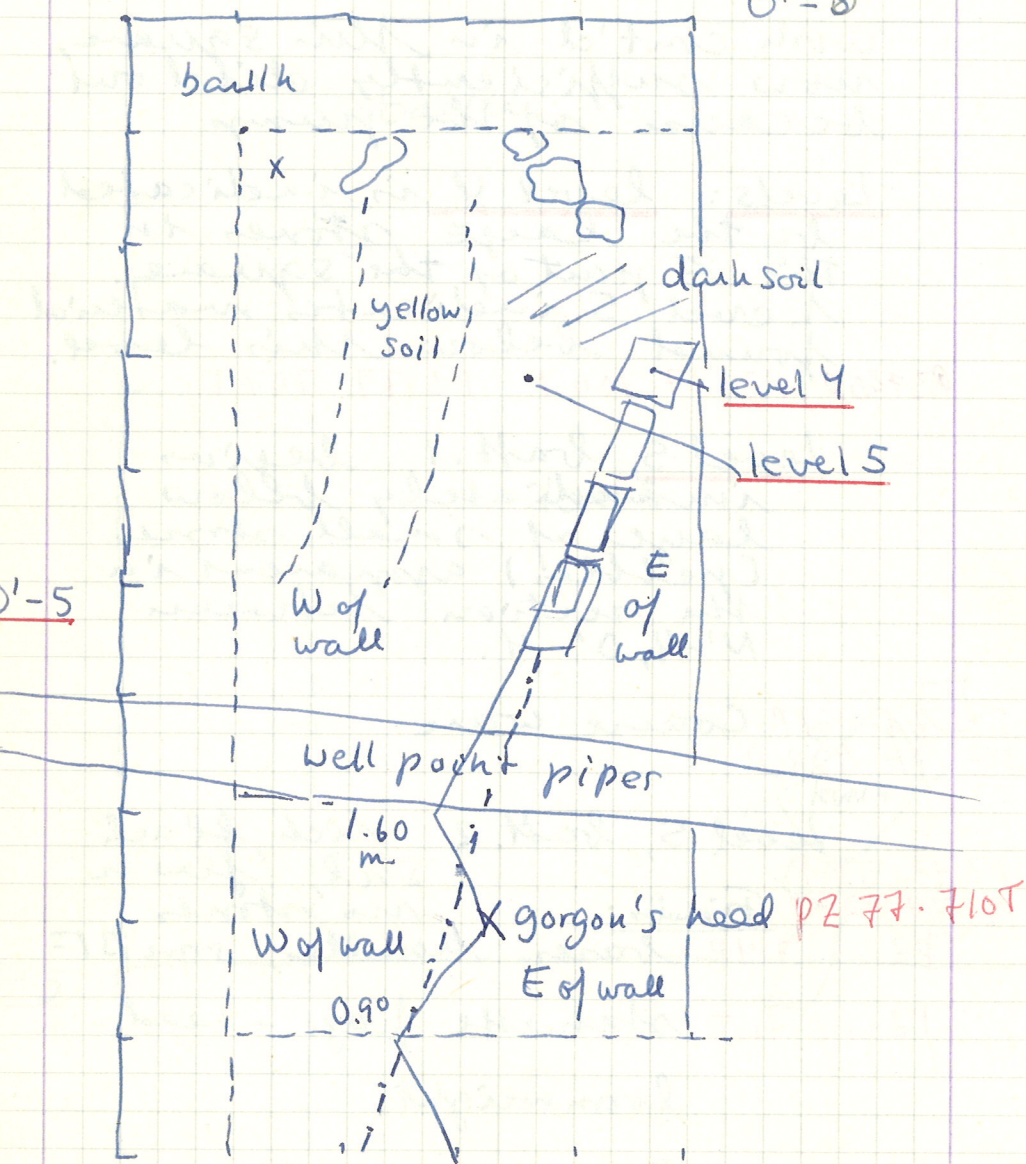
level 5, batt. 2 rich black
soil, few or
no stones
PZ 77.930 P
PZ 77.929 P finds:
PZ 77.714 P bases, handles, some BF

PZ. 77.711 T statuette frag. - head
loom weight

PZ 77.712 P 2 men. cups - NW corner
PZ 77.715 P Depth from tile layer 1 in
PZ 77.716 P section 0.95 m.
depth from top of bank 1.55 m

N'-5

O'-5



batt. 2 ends with a thin layer of yellowish soil, which is then replaced by dark soil from which a ^{soil} carbon sample was taken

FOR SOIL SAMPLE of. p. 75. PZ 77.709 SS

O'-5

PZ 77.934 P

PZ 77.936 P

PZ 77.949 P

excavated together with N'-5 a natural division was made between the northern part of N'-5 and O'-5 and the southern part, with the well-point pipes forming the dividing line.

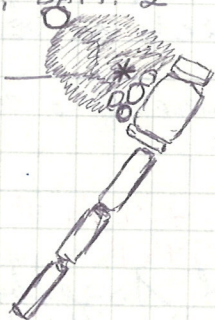
The material was further separated by W of the wall and E of the wall (wherever there is no distinction in the label, the Western section is intended).

The same division was made in the southern part of O'-5, which was formed by an arbitrary line of the wall.

The square was excavated by battalions - it should, however, be noted that different parts of the square were excavated at diff. times - hence batt. 2, 3 and 4 could occur simultaneously within the square.

— POSITION OF SOIL SAMPLE —
N1-5 LEVEL 5, BATT. 2

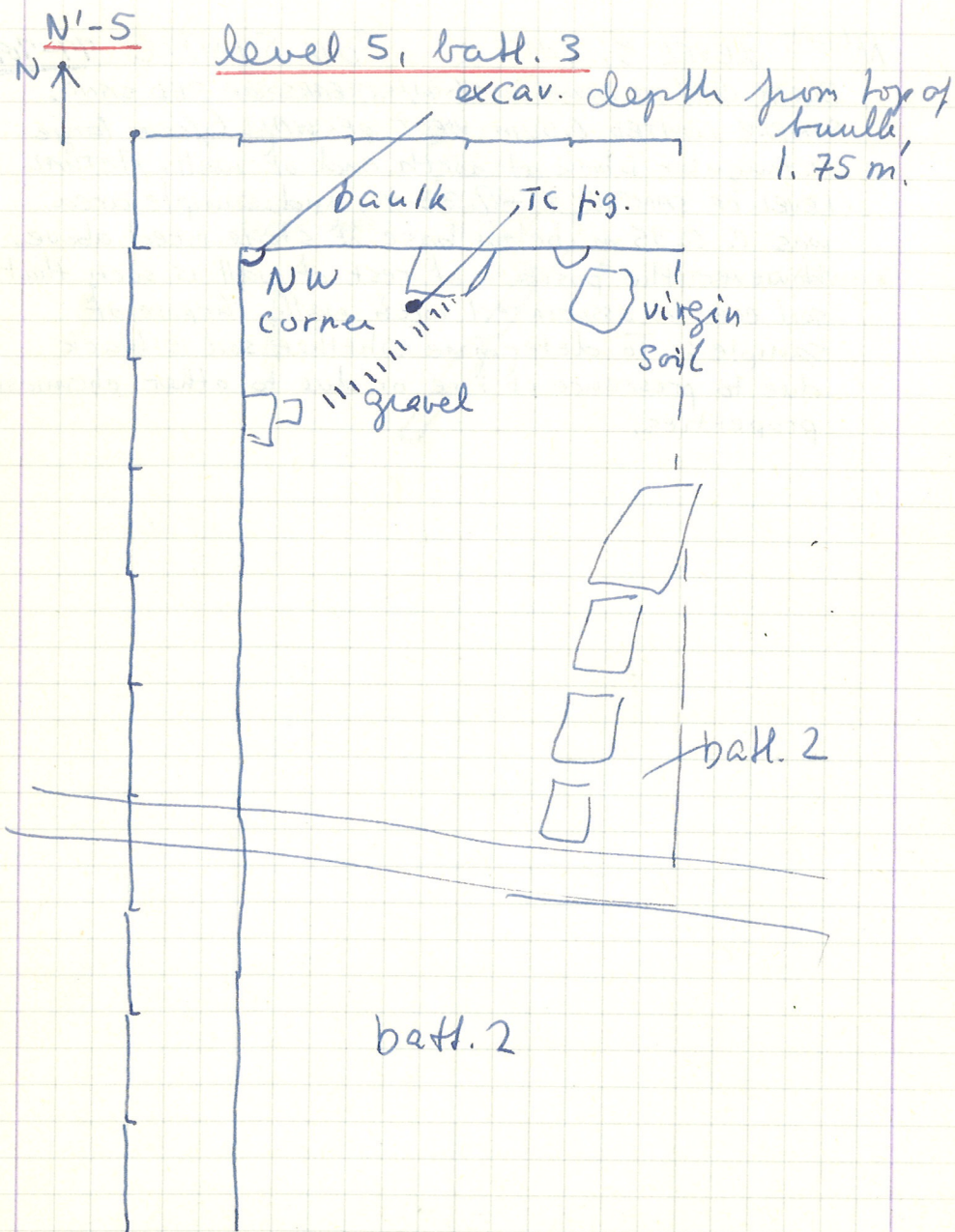
AREA OF
BLACK SOIL



* = POSITION OF SAMPLE

78
N¹-5 LEVEL 5, BATT. 2 - SOIL SAMPLE 77-7095

BLACK CLAY IN BROWN CLAY W/STREAKS OF RED SAND.
SAMPLE LOCATED 0.50m. WEST OF WALL (from large
rectangular block at north end of wall. ACTUAL
LEVEL OF SAMPLE = -9.33m., and sample area
was c. 0.35m. below base of stone cited above.
However the position of rest of wall is such that
soil can be associated with wall. Purpose of
sample: To determine whether soil is black
due to presence of fire or due to other chemical
properties.



Tuesday July 5, 1977

N'-5, level 5, batt. 3 PZ 77.975P

finds concentrated in NW corner:

- PZ 77.731T votive head
min. vase w. handles
min. vase without handles
FOR CARBON SAMPLE OF P. 83. PZ 77.724SS
loomweight PZ 77.974T
6th cent. pottery PZ 77.730P

N'-5, O'-5 level 5, batt. 4

purpose: to define extent of virgin soil (which appeared in N.E. corner of batt. 3) and black soil (N.W. corner)

black leary soil - lighter shade in between (corresponds to that of batt. 2)

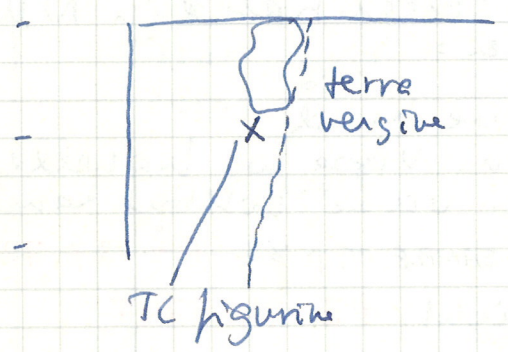
- PZ 77.743P PZ 77.973P
PZ 77.729P finds: few sherds compared to batt. 3

PZ 77.728P NW corner: miniature vase

PZ 77.735T complete TC female figurine
depth from bault 2.0 m.
1107 from stake in N'-6)

N'-S NW corner level 5, batt. 4

N
↑

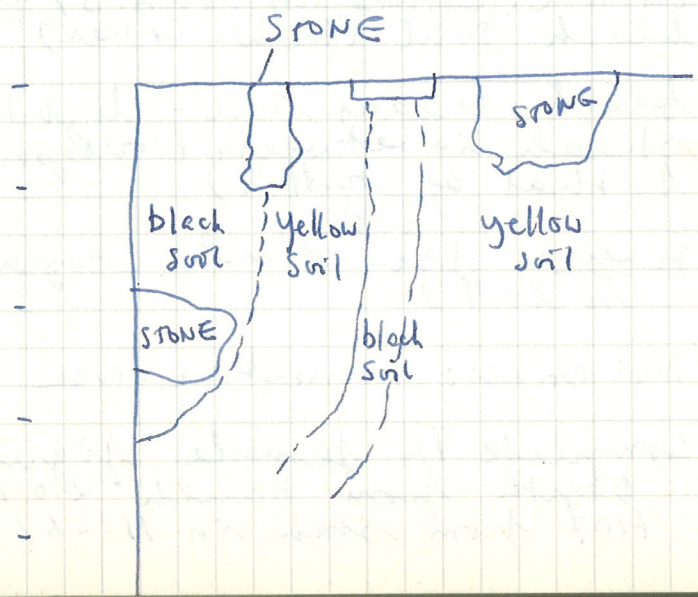


at the end of batt. 4, terra
vergie appeared in a
N-S line with black soil
on either side - the surface
was cleaned and photo-
graphed.

level 5, batt. 5

again concentration of good
alt. cent. material in NW
corner - miniature vases,
rims and bases of others.

N'-S NW corner level 5, batt. 5

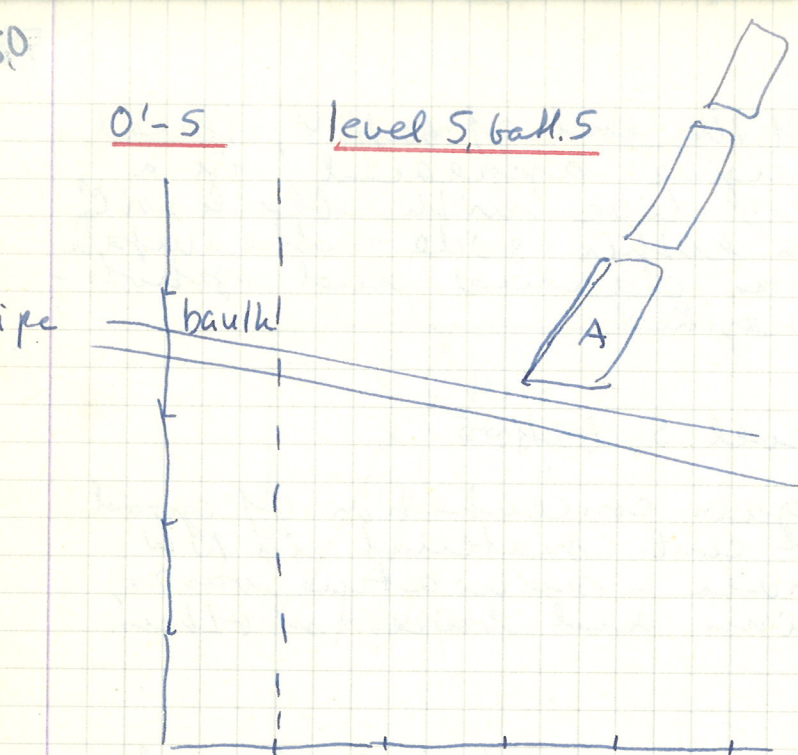


0'-5 level 5, batt. 3 S end,
E of well PZ 77.965 P

find: bronze shigil
PZ 77.735 M

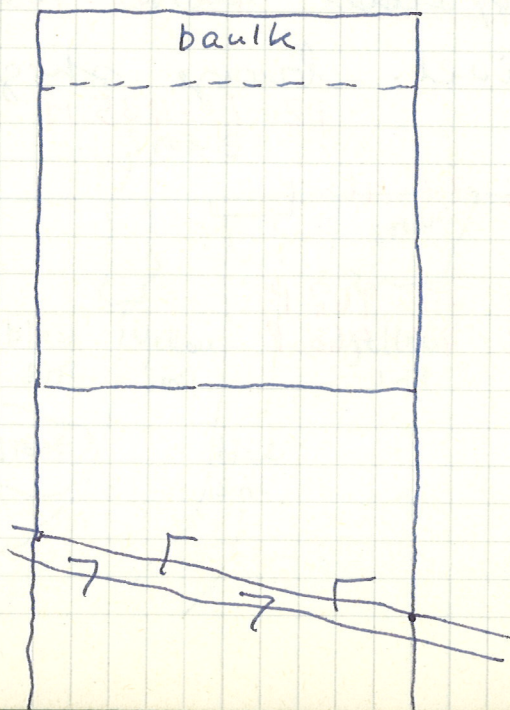
PZ 77.966 P

PZ 77.967 P
PZ 77.968 P



N'-6, O'-6

level 4
batt. 1



0'-5 level 5, batt. 5 PZ 77.969P
PZ 77.970P. PZ 77.971P PZ 77.972P

lower end of conglomerate block (A) visible in this battuta. depth from to surface of block: 0.60 m.

all battutas in level five of N'-5 and O'-5 contained coarse ware and fine 6th cent. ware. few tiles. cm-mentation of small cups in NW area of N'-5.

N'-6, O'-6

work started in O'-6, working from N of pump pipes.

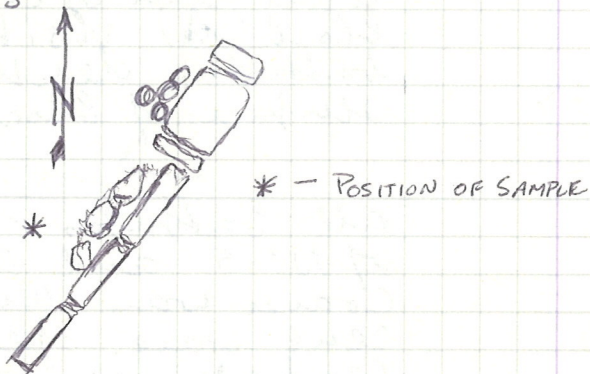
level 4, batt. 1 corresponds to the 2d (lower) tile fall outlined in the section drawn by RMG. This battuta contains the bottom layer of the tile fall. It corresponds to the level 4 in N'-5, O'-5.

PZ 77.962P coarse pottery PZ 77.964P

PZ 77.744P small (miniature) unguentarium

PZ 77.963P

— POSITION OF CARBON SAMPLE —
N'-5. LEVEL 5, BATT. 3



77-724SS
N'-5 LEVEL 5, BATT. 3 - CARBON SAMPLE
REMAINS OF SEVERAL CHARCOAL LIMBS FOUND C. 0.90 m.
WEST OF WALL IN A DARK BLuish-GRAY CLAY MATRIX
WITH SOME STREAKS OF REDDISH SAND. ROOTLETS PRESENT.
ACTUAL LEVEL OF SAMPLE = -9.44 m. CHARCOAL
IN POSITION WHICH ASSOCIATES IT WITH THE WALL.

M'-2, N'-2 CLEANING OF AREA SOUTH OF WALL A
LEVEL 3 (= level above visible fieldstone pavement)
TILE FALL C. 0.20 m. below Fieldstone wall A.
FEW SHERDS

AREA WAS BROUGHT DOWN TO THE LEVEL OF THE
FIELDSTONE PAVEMENT AND OTHER 6TH C. FEATURES
IN N'-2. THE OPERATION CONSISTED OF SIX
BATT. POTTERY FINDS WERE SMALL IN ALL BATT,
HOWEVER 5 AND 6 CONTAINED A GREATER NUMBER
OF SHERDS THAN THE OTHERS. MATERIAL WAS
GREEK: primarily coarseware with some
black glaze. NOTICEABLE FEATURE OF SECTION
IN BULK IS A HEAVY TILE FALL.

77-957P
77-958P
77-959P
77-960P
77-961P

CLEANING WAS CONTINUED IN N'-2 MOVING
EASTWARD IN AN AREA WHICH HAS BEEN DRIED
BY THE PUMPING SYSTEM.

O'-5 SOUTH END, WEST OF WALL, LEVEL 5, BATT. 5 —
CARBON SAMPLE PZ 77-734SS
LARGE LIMB IN BLuish-GRAY CLAY MATRIX. LIMB WAS
C. 0.40 m. X 0.12 m. FOUND IN AREA BETWEEN LARGE
WORKED STONES LEFT IN SITU FROM AN EARLIER
BATT. ACTUAL LEVEL: -9.69 m.

Wednesday July 6, 1977

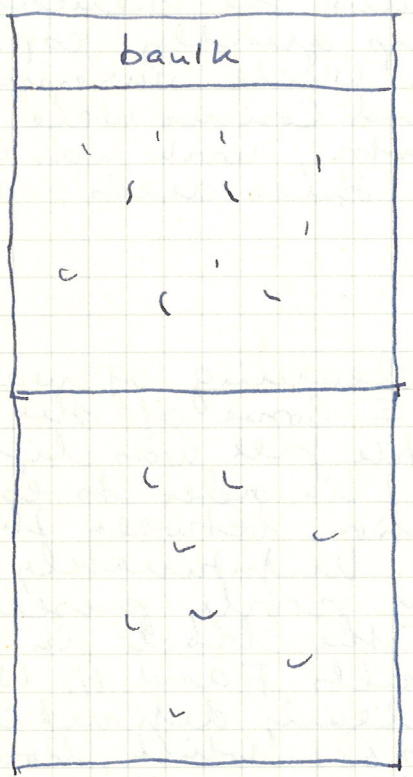
Pump system broke down last evening, and the benches filled up quickly - esp. N'-5 and O'-5. While Giuseppe di Taranto and Cosimo were checking the motor, work was continued in three areas - all day

M'-4, M'-3

Continued clearing of wall S' and wall E. Some of the surrounding tile fall was lifted (carefully) in order to establish the relation between these two walls. Unfortunately wall S' is very poorly preserved, except for the block in the area of walls F and H. Wall E has a clearly defined cover (see above, p. 68) which, however, does not line up with wall S'. The N-5 part of wall E is very shallow!

N'-7, O'-7

levels 2+3 no architectural features



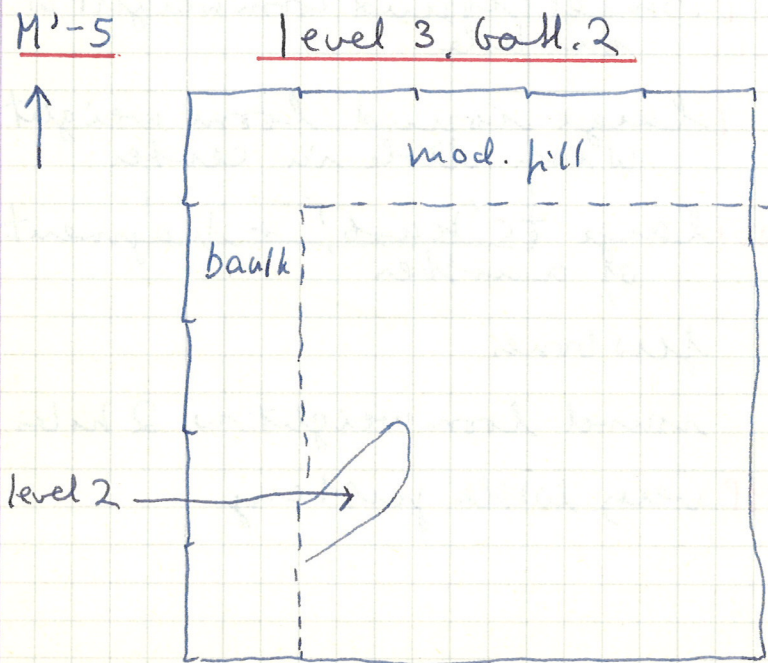
N'-7, O'-7

(above, p. 53)

level 2, sect. 4 cont'd
(above level of tile fall in N'-6, see section)

Findings:

- PZ 77.758 M bronze ring (small piece missing), 5 eved of square
few tiles
lump of metal iron? lead?
- PZ 77.986 T { small round loom weight w. one hole
large round loom weight with hole in center
- PZ 77.985 T large TC 'knob' + fragment of another
few bones
round loom weight w. 2 holes
- PZ 77.984 P very little pottery



level 3, batt. 1

although the tiles are not numerous, this battuta seems to correspond with the level 3 (below tile fall #1) in N'-6

Finds:

coarse ware

pythos rim

round disk w. knob PZ 77.754

bone paws

iron nail PZ 77.772 H

M'-5

work cont'd in this square at level of big stones (see notebook PIZIC 1966-1977, p. 179)

level 3, batt. 2

PZ 77.976P tiles and gravel

Finds:

PZ 77.755T TC column casing, fluted

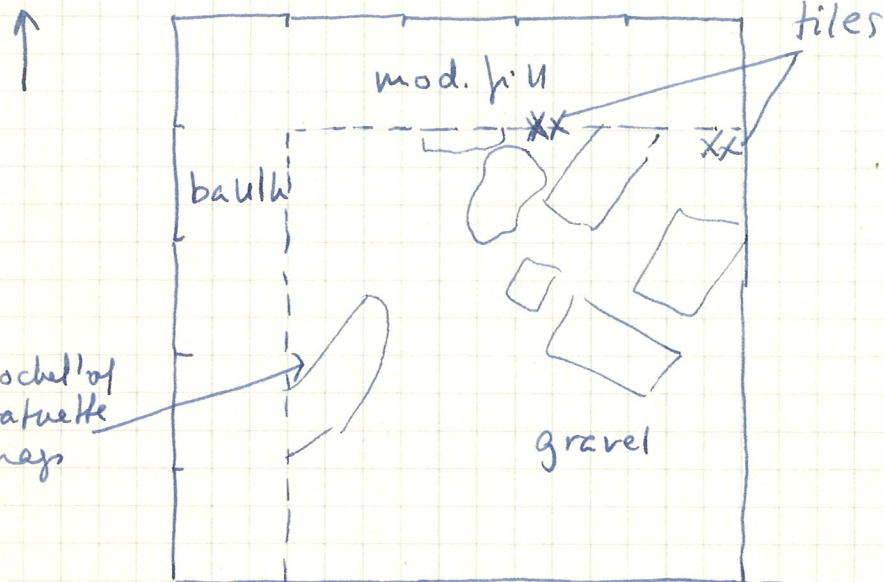
PZ 77.753T large TC block with cylindrical hole (don't post?)

PZ 77.757 TC column casing (a rim?)

PZ 77.756 iron frags.

M'-5

level 3 batt. 2



Thursday July 7, 1977

A busy day - work cont'd in three areas, while the areas already excavated were scrubbed and polished by Jack.

M'-5

level 3, batt. 2 cont'd from yesterday - hard soil, many small stones

Finds:

PZ 77.980 P small bag of sherds

PZ 77.981 T 1 small statuette frag.

photographs taken to show location of fallen blocks.

level 3, batt. 3 still gravel and hard soil, esp. in E half of square

Finds:

PZ 77.983 P sherds - red coarse ware

PZ 77.773 T statuette frags. (N of large

PZ 77.987 T stone in W baulk) including one head

M'-5level 3, batt. 4 Finds:

PZ 77.1011 P few sherds

PZ 77.774 I statuette frag.

PZ 77.1012 P

N'-7, O'-7level 3, batt. 1 cont'd from
yesterday Finds: bones PZ 77.994 B

PZ 77.988 P coarse ware

iron nail PZ 77.995 M

N¹-6, O¹-6

level 4, bath. 1 cont'd from
July '5 (above, p. 81)

Finds: PZ 77-1007 P

coarse ware in abundance

- PZ 77-786T { statuette frags. ca. 25
- { female votive head
- { satyr's head ('Socrates')

PZ 77-785T round form weight w. 2
holes. broken

level 5 (defined by correlation
w. N¹-5, O¹-5, where the
large blocks constitute level
4. Level 5 is consequently
below the upper surface
of these blocks)

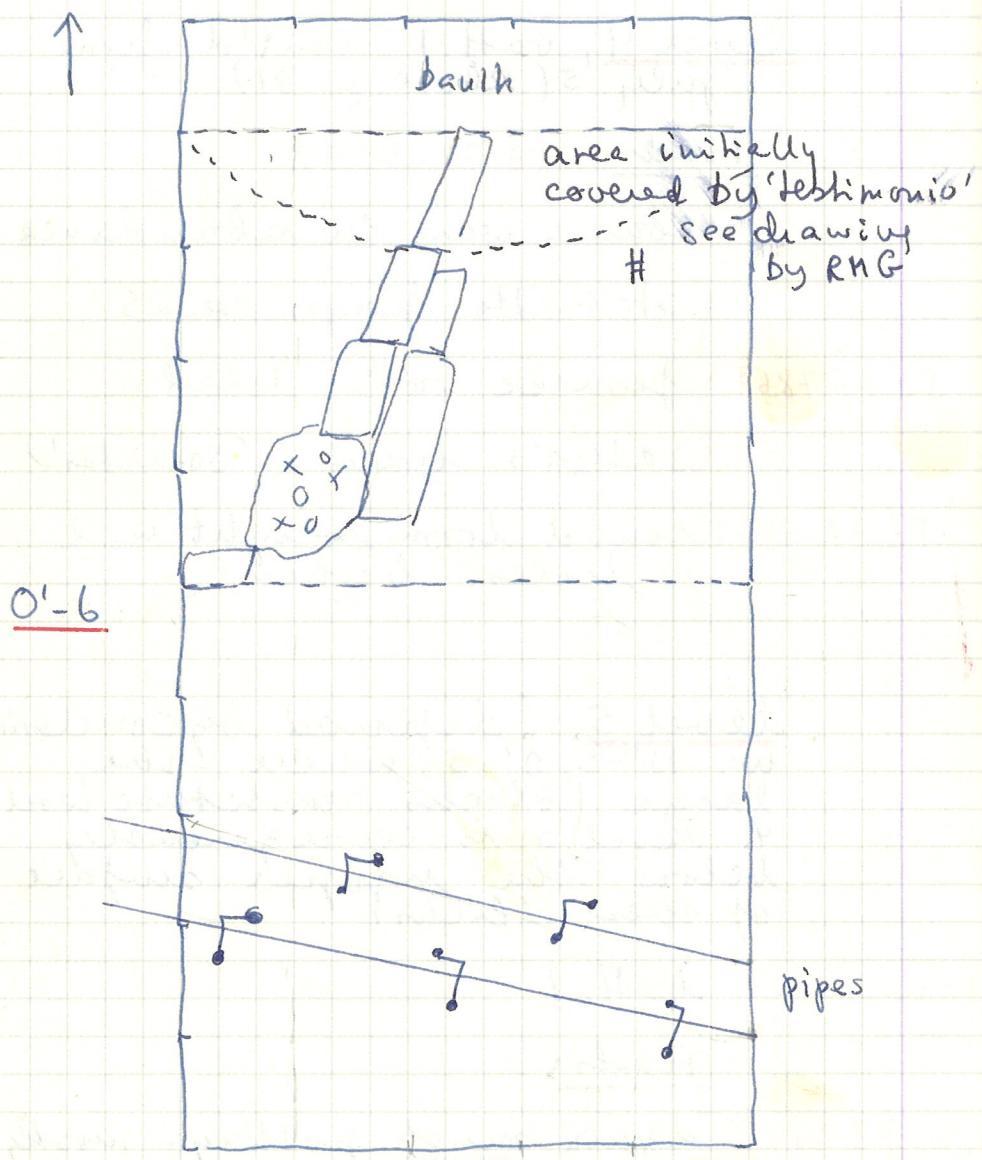
bath. 1

Finds:

- PZ 77-1008 P again much pottery - mostly
- PZ 77-1010 P coarse ware and red ware

few painted sherds and
bases (4th. cent.)

N'-6 level 5 ball. 1



PZ 77.789 mech of tall jar

hollow 'knob' or 'base' w. thick sides

PZ 77.788T } suezey statuette base
 } fragmentary male volute head
 (S. Giusepye Vecchio ecc. to Emanuele)

in this bathuta 2 large square blocks appeared in the W end of the square. They continue the line of the wall in N'-5, O'-5 to the north. The edge of a third block appears to the right of the second block. Between this set of blocks and the ones previously uncovered there is a depression with fragments of vases and tiles (photographed while work was in progress. this area needs to be cleared further)

It became painfully obvious that the wall (on line of the wall) continues north towards square M'-6. The baulk in N'-6 which had been left as a 'testimonio'

105
of the tile falls and related levels thus had to be removed.

The finds are recorded separately as N'-6 'testimonio' Level 3 (1 below tile fall #1, see section) and level 4 (below tile fall #2).

N'-6 'testimonio'

Level 3, ball. 1

Finds: PZ 77.977P

PZ 77.776P round disk w. relief design

PZ 77.777T female votive head statuette frag.

PZ 77.778T round loom weight w. 2 holes

PZ 77.775TC column casing

rectangular piece of iron w. knob in center
PZ 77.779M + 2 cylindrical iron frags

Level 3, batt. 2

Find: PZ 77.979 P

PZ 77.780T statuette frag., including head

PZ 77.781T loom weight

Note a few round field stones in this batt. - no architectural function, though.

Level 4, batt. 1 (below 2d tile fall)

Find: PZ 77.783 T

PZ 77.784T male volute head

CARBON SAMPLE -

PZ 77.782 LARGE FRAGMENTED LIMB, c. 0.06 X 0.04 m. in dark SS brown sandy clay. Rootlets present. Associated with large stones and fragments of tiles and pottery. Actual level = - 8.91 m.

N'-6 'testimonio'

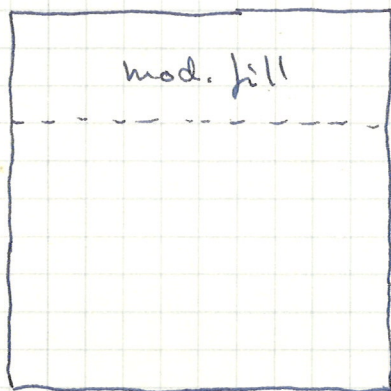
level 5, batt. 1 (below
upper surface of large
stones in N'-5) PZ 77.1006 P

in the lower part of the
batt. another large stone
appeared, on its side and
in line w. the others.

 Finds:

PZ 77.787 T statuette frags.

M'-6 level 2, batt. 1



Friday July 8, 1977

M'-5

level 3, batt. 4 cont'd.

Finds: PZ 77.1013 P

PZ 77.801T rovine head, other statuette
frag.
column casing

M'-6

level 2, batt. 1

This level is equivalent to the level 2 in M'-5, described in PIZZICA 1976-1977, p. 179. The soil is very hard, and each battuta is shallower than in other areas.

Finds: PZ 77.1026 P PZ 77.1027 M

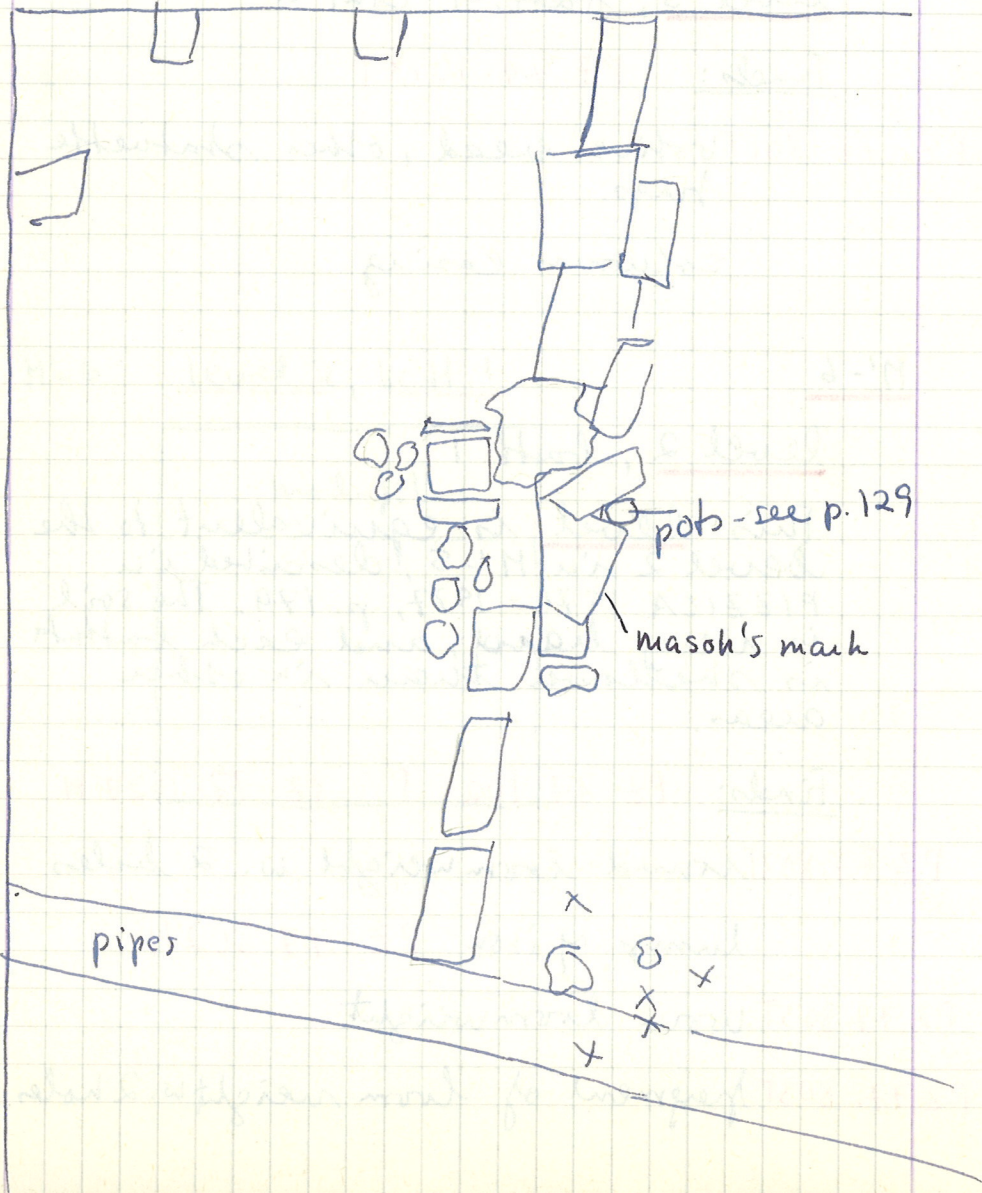
PZ 77.803T round loom weight w. 2 holes
lump of iron PZ 77.802M

PZ 77.803T worn loom weight

PZ 77.803T fragment of loom weight w. 2 holes

N¹-6, O¹-6 level 5, batt. 2

bauk

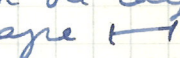


fragment of TC statuette -
painted slipper. surface
worn

N¹-6, O¹-6

level 5, batt. 2

more tiles than in previous
batt., esp. along edge of wall,
also some blocks appeared
at the S. end by the pipes.

- PZ 77.1024 Wall cleaned - consists of
P standing and fallen blocks.
- PZ 77.1028P note mason's mark on large
horizontal block - shape 

Finds: one full box of sherds

- PZ 77.1014P
- PZ 77.1019T large basin complete 1/2 pres.
- PZ 77.805T statuette frag. PZ 77.1018T
- PZ 77.807T
- RF sherd w. meander pattern
PZ 77.810P and square w. dots
- PZ 77.811P unguentarium, complete, no
decoration
- PZ 77.809T pyramidal loom weight,
broken
- small pyramidal loom weight

PZ 77.806^P RF sherds: neck, base head
and arm of female figure
PZ 77.955^P level -9.56
PZ 77.956^P distance from wall:

(should technically belong to level 6,
batt. 1, appeared at the lowest part
level 6 batt. 1 of level 5.

level 6 indicates the level
below the tile fall noticed
in the S. end of the square.
This is a concentration of
tiles rather than a tile fall
proper. The soil is very dark
and heavy

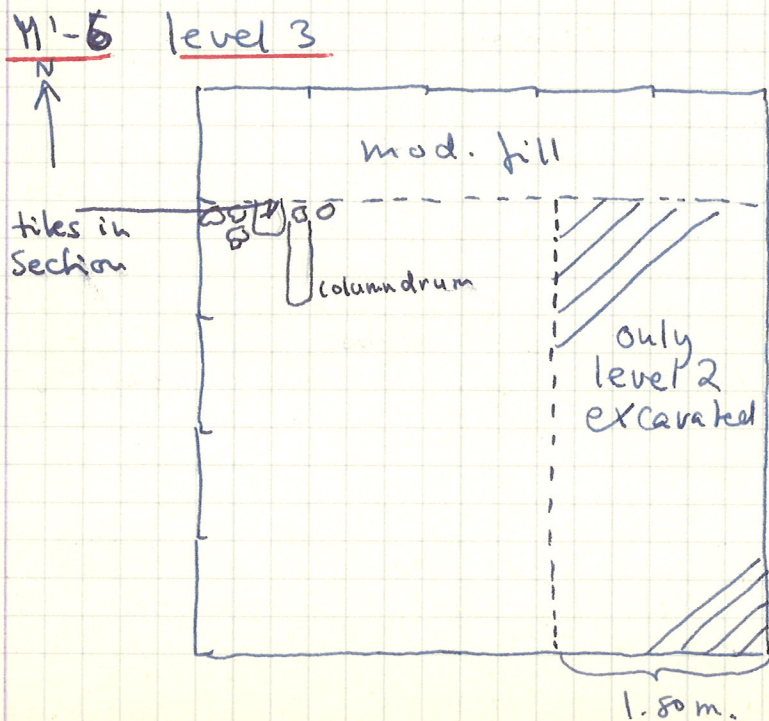
much pottery - mostly plain
red ware. PZ 77.1023^P
PZ 77.1025^P

PZ 77.942^P black-glaze plate frags.
PZ 77.954^P

more RF sherds: remainder of
neck, male youth resting on
column
distance from the one found
previously: ca.
level -9.71

Saturday July 9, 1977

Cleaning of area previously excavated
and labelled as fireplace 1 and
2 (PZ 1976-1977, pp. 166-169). Note
concentration of charcoal.



Monday July 11, 1977

Work continued in three areas:

- 1) field stone pavement and cleaning south of 'fire place' 1 and 2 - see above, p. 119.
- 2) N'-6
- 3) N'-6, 0'-6

N'-6

digging furiously, to find out what happens to the wall discovered in N'-5, N'-6, 0'-5, 0'-6.

level 2, batt. 1 finished

PZ 77-1043P few sherds

PZ 77-1044G

level 3, batt. 1 started

level 3 identified as the level below tiles and gravel recorded earlier. a baulk left at the E end of the square. in the NW corner of the square appeared a column drum, placed N-S and a cluster of

stones - see sketch
 column drum: D. from mod. hill 0.90m
 Finds:

sherds - coarse ware PZ 77.1033 P

pin from fibula PZ 77.858 M
 PZ 77.1034 M

level 4, batt. 1

This level is justified by a change of soil - dark and heavy, with no gravel. Also, we're now definitely below the hill fall, and also to a new architectural feature had appeared in the previous level - the column drum.

Finds:

PZ 77.1037 P large number of sherds - 1 box

PZ 77.1035 T statuette frag. including satyr's head PZ 77.861 T

PZ 77.859 P 'burnt' vase - greyish clay - neck and ribbed handle

bones

lamp frag. PZ 77.860 P

pin from fibula PZ 77.862 M

M¹-6 level 4, batt. 2

Finds: PZ 77.1039 P
PZ 77.1040 T

PZ 77.864T female votive head

PZ 77.865T round bronze weight w. 2 holes

RF shield 'sun' design
PZ 77.863 P



RF shield meander design

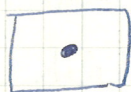


Small unguentarium

Figurine legs PZ 77.1041 T

N'-6, O'-6 level 6, batt. 1 finished

PZ 77-1029P noticeable tile fall and concentration of pottery - area cleaned for photographs



square block w. hole discovered in the process of cleaning the tile fall E of the wall, just N of the well point pipes

Finds:

statuette frag.
seated fig - hand + upper part of throne

1 box of sherds - a surprising amount of coarse ware

2 RF sherds - one with the profile of a woman's face - might belong to the vase.

Elevations:

tiles N end - 9.73

tiles S end - 9.58

square block - 9.58

block w. mason's mark - 9.31

N¹-6, O¹-6

level 6 batt. 2

tiles lifted, beginning at
the 5 level.

heavy black soil - carbon

PZ 77-1036 P Finels: pottery: PZ 77-841 P PZ 77-846 P
PZ 77-842 P
more RF sheets

PZ 77-839 T statuette frag PZ 77-844 T

Black glaze cup

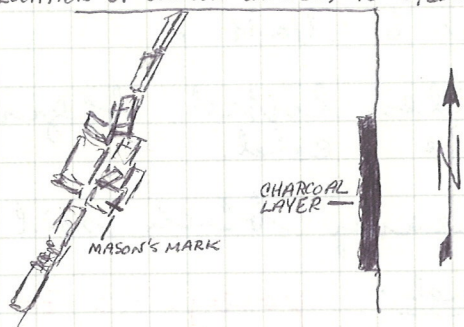
PZ 77-845 T figure 8' shaped loom weight

PZ 77-843 P thin black sheet w. loop
designPZ 77-840 T satyr's head - bearded
notice teeth

pepils vase, next to wall

Vase in wall removed - level 5
in E edge of wall - pinkish (pinkish)
ole, well preserved
also neck and handle of
coarse ware - see sketch p. 112

LOCATION OF CARBON SAMPLE, N'0'-6, LEV. 6, BATT. 2



Carbon sample taken: 7-7-101555

CARBON SAMPLE - LARGE ROUGHLY RECTANGULAR

concentration of carbon, c. 3.00 m. x 0.40 m x 0.03 m.

(Actual width is greater since charcoal layer extends into N'0'-7). MANY LIMBS AND LEAVES IN A GRAY

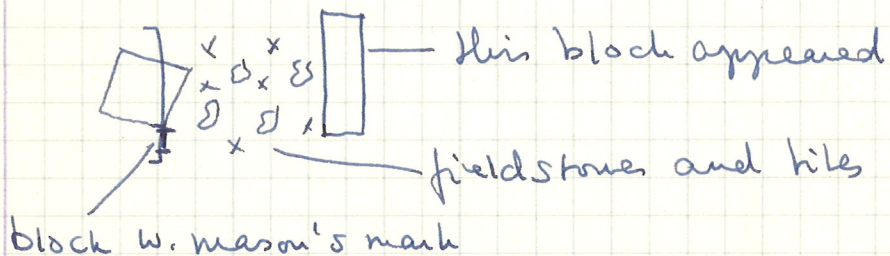
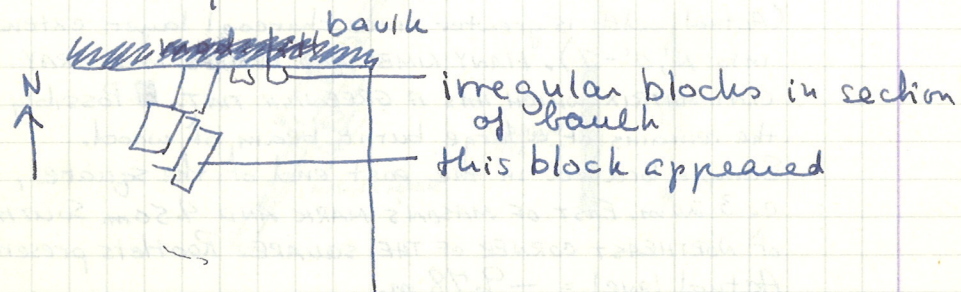
CLAY MATRIX WHICH HAS A GREENISH TINT. Possibly the remains of a large burnt beam of wood.

Sample located in the east end of the square, c. 3.20 m. EAST OF MASON'S MARK AND 4.50 m. SOUTH OF NORTHEAST CORNER OF THE SQUARE. Rootlets present.

Actual level = -9.78 m.

N'-6, O'-6 level 6 batt. 3

Sketch of details:



level 6, batt. 3

more tiles and more blocks visible - indication of field-stone pavement.
heavy dark soil - wet and difficult to work in NE corner

burnt area continues along E edge of square - cf. previous battuta

Find:

pottery PZ 77.1038P

statuette frags

large base for pillar

small cup on pavement

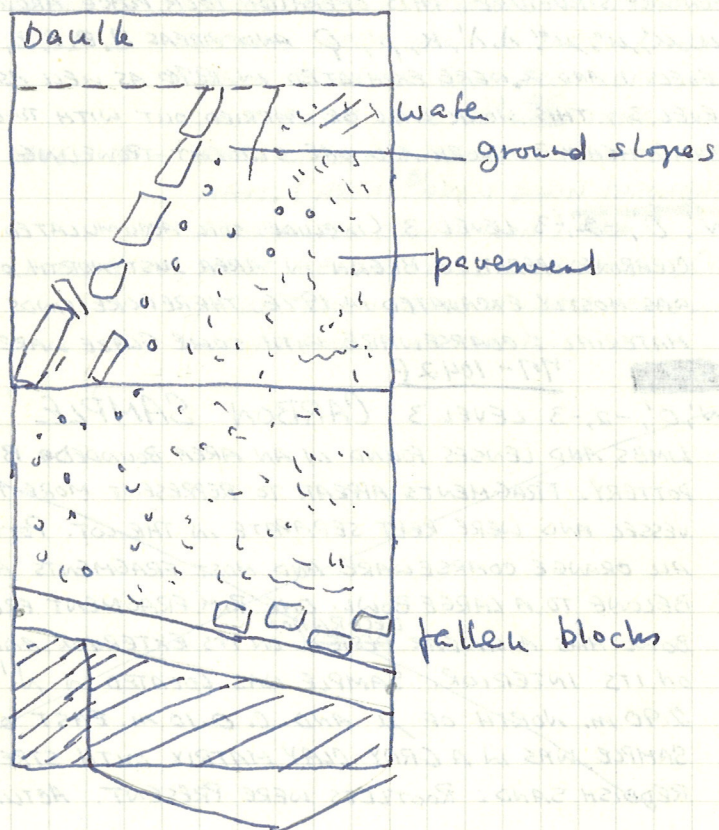
— DEFINITION OF LEVELS IN AREA OF 6TH C. STRUCTURE —

- LEVEL 1 - COMPLETELY EXCAVATED IN 1976
- LEVEL 2 - GRAVEL AREA DOWN TO 0.05-0.10m. ABOVE PAVEMENT. (ONE AREA LEFT UNEXCAVATED IN 1976 ~~TO BE~~ ^{TO BE} TAKEN DOWN)
- LEVEL 3 - AREA DIRECTLY ABOVE & DOWN TO PAVEMENT. (AREA ^{TO BE} TAKEN DOWN THROUGHOUT AREA UNDER EXCAVATION)
- LEVEL 4 - AREA BELOW LEVEL OF PAVEMENT. (AREA TO BE TAKEN DOWN IN LARGE AREAS WHERE NO PAVEMENT IS FOUND.)

EXCAVATION ~~HAS~~ ^{WAS} BEGUN TO DETERMINE THE EXTENT OF THE SIXTH CENTURY STRUCTURE. THIS OPERATION TOOK PLACE AROUND WALLS $\mu, \mu', \mu'', \mu''', \lambda, \lambda', K, P', Q$ AND AREAS A, B, E, C, E, F, V, X, Y, +Z. LEVELS 1 AND 2, WERE EXCAVATED IN 1976 AS WELL AS PART OF LEVEL 3. THIS WORK WILL BE CARRIED OUT WITH TWO WORKMEN DOING HEAVY PICKWORK AND ONE STUDENT TROWELING.

N', O', -2, -3 LEVEL 3 (INCLUDES SOIL ACCUMULATED THROUGH YEAR) CLEARING OPERATION BEGAN IN AREA JUST NORTH OF μ ; AREA WAS MOSTLY EXCAVATED IN 1976, THEREFORE FINDS ARE FEW. MATERIAL: COARSEWARE WITH SOME GLAZE WARE.

~~717-1042P~~
 N', O', -2, -3 LEVEL 3 CARBON SAMPLE
 LIMBS AND LENSES FOUND IN AN AREA BOUNDED BY BROKEN POTTERY. FRAGMENTS APPEAR TO REPRESENT MORE THAN ONE VESSEL AND WERE KEPT SEPARATE IN THE LOT. POTTERY IS ALL ORANGE COARSEWARE AND MOST FRAGMENTS APPEAR TO BELONG TO A LARGE BOWL. ONE RIM FRAGMENT FROM A SMALLER BOWL HAS A LINEAR ^{DECORATION} DESIGN ON ITS EXTERIOR AND GLAZE ON ITS INTERIOR. SAMPLE WAS LOCATED IN N'-3, LEVEL 3, 2.90m. NORTH OF μ AND C. 0.10m. EAST OF Q. SAMPLE WAS IN A GRAY CLAY MATRIX WITH STREAKS OF REDDISH SAND. ROOTLETS WERE PRESENT. ACTUAL LEVEL - 9.22m

N¹-6, O¹-6 level 6 batt. 4

area not
excavated
below level 3

Tuesday July 12, 1977

work continued in 3 areas

- 1) N¹-6, O¹-6
- 2) M¹-6
- 3) N¹-2, N¹-3, O¹-2, O¹-3

N¹-6, O¹-6

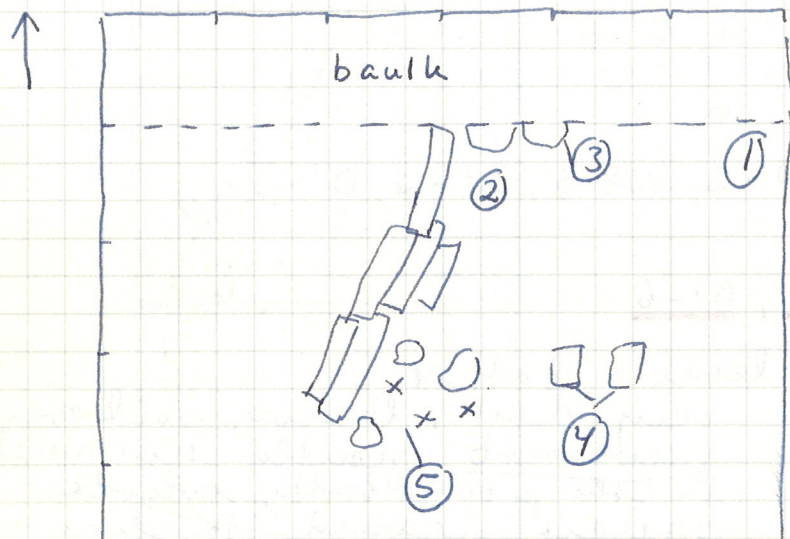
level 6 batt. 4

very dark, heavy soil over
pavement, partly uncovered
in the prev. batt.; whole
square cleared to show
extent of pavement.

[remaining part in S end of
square of batt. 3 cleared -
produced large tiles - one
cover tile assembled from frag.]

PZ 77-1061P Find: PZ 77-1051 P PZ 77-1058P
PZ 77-1062T PZ 77-1060P PZ 77-1059T
PZ 77-892T NE corner: feet + 2 frags of
PZ 77-920T large statuette ('San Nicolo')
grayish clay - probably
due to fire (maybe the
same fire that resulted in
the carbon layer in the
E edge of the square)

elevations - level 6, batt. 4
N'-6, O'-6



- ① deepest point of NE corner - 10.17
- ② greenish-gray soil - 9.88
- ③ stones in section of balk - 9.62
- ④ blocks in center of pavement - 9.76
- ⑤ pavement immediately E of wall - 9.94

pottery

few tile fragments lifted - all large

pavement consists of small tile frags. and field stones placed unevenly.

PZ 77.893P fragments of large flat bricks

PZ 77.894 M

pavement cleaned -

wheelbarrow ramp removed

PZ 77.1049 P

M'-6 for sketch, see p. 142

M'-6 level 4, batt. 2 cont'd from yesterday

Find: PZ 77.896 P

few tiles

PZ 77.1063 P 1 box of coarse sherds
PZ 77.1064 B

worn votive female head
at S edge PZ 77.895 T

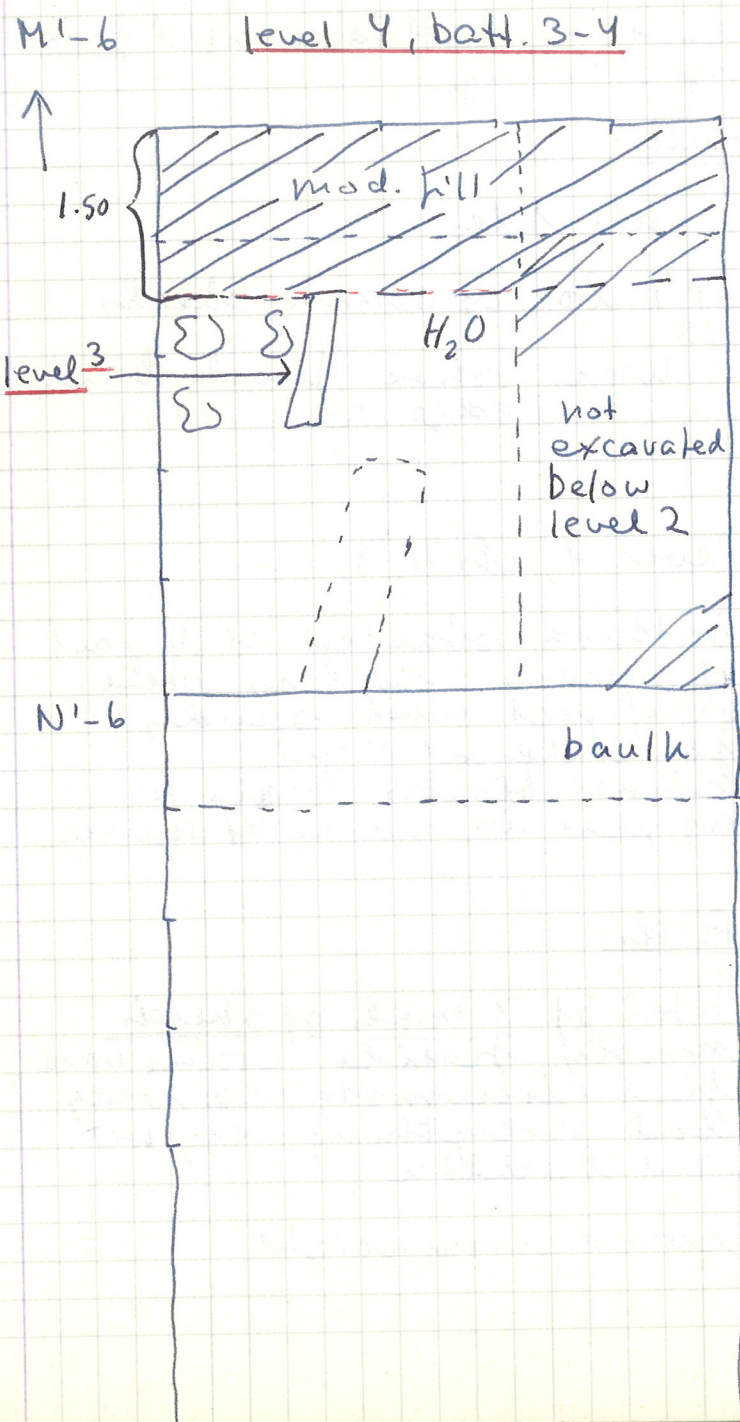
M'-6 level 4, batt. 3

battuta started at N part
of square - soil is there
very wet and sandy.
few tiles at N end.
stone blocks begin to
appear in center of square.

Find:

PZ 77.935 P total of 3 boxes of sherds
PZ 77.1050 P mostly fragile coarse ware
PZ 77.1052 P find circumstances very
bad - everything very wet
and breakable

PZ 77.898 T round loom weight



unguentarium PZ 77.897 P
small aryballos

PZ 77.933 T statuette frag. throughout
PZ 77.939 T square but deposit in NE
PZ 77.940 T corner produced a total of
PZ 77.1053 T / box of frags. - all very
fragile - some poorly fired

different clay types discernible,
also different sizes -

female heads, male head,
bearded,
foot
hands

few tiles w. stat. frags - more
along E edge - a few painted
tiles (red, white) yellow -
graphed in situ.

M'-6

level 4, batt. 4

reached water level in NE
corner

blocks visible in center.

PZ 77.1055 P PZ 77.1056 T

N'0'-2-3, LEVEL 3 77-1069P 77-1048P

WORK CONTINUES IN EFFORT TO CLARIFY 6TH C. STRUCTURE. SO FAR MOST EFFORT HAS BEEN INVOLVED IN CLEANING UP AREA PREVIOUSLY CLEARED IN 1976.

FRAGMENT OF A LONG PIN FOUND. 77-891M

~~PIECE OF LEAD 0.049 m. long FOUND, FUNCTION UNKNOWN~~

N'0'-2-3, LEVEL 3 CARBON SAMPLE 77-890SS

LIMBS AND LENSES FOUND IN AN AREA BOUNDED BY BROKEN POTTERY. SAMPLE WAS LOCATED IN N'-3, LEVEL 3, 2.90m. NORTH OF μ AND C.O. 10 m. EAST OF ϕ , AND WAS IN A GRAY CLAY MATRIX WITH STREAKS OF REDDISH SAND. ROOTLETS PRESENT.

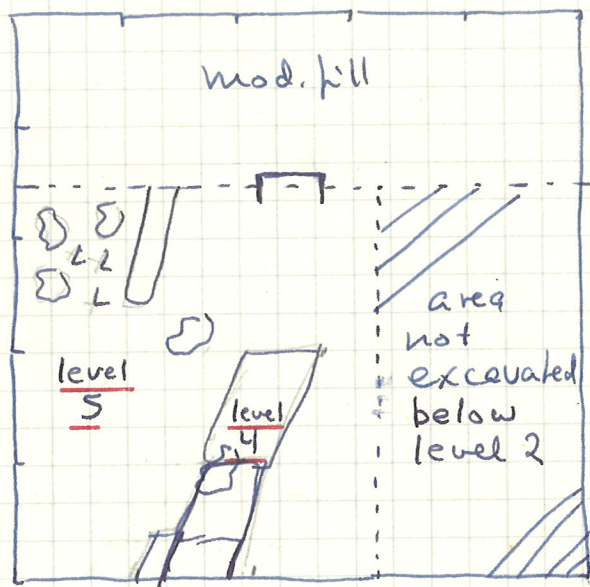
ACTUAL LEVEL = -9.22m.

77-1047P POTTERY FRAGMENTS APPEAR TO BE FROM MORE THAN ONE VESSEL. POTTERY IS ORANGE COARSEWARE AND MOST SHERDS APPEAR TO BELONG TO A LARGE BOWL. ONE ~~IS~~ RIM FRAGMENT FROM A SMALLER BOWL HAS A LINEAR DECORATION ON ITS EXTERIOR AND ITS INTERIOR IS GLAZED.

N'0'-2-3 LEVEL 2

AREA UNEXCAVATED IN 1976 TAKEN DOWN. FINDS FEW, INCLUDE A LOOMWEIGHT OR SPINDLE WHORL. 77-1046T

M'-6



elevation of blocks: - 9.04

Wednesday July 13, 1977

work cont'd in the following areas:

- 1) M'-6
- 2) N'-6, 0'-6
- 3) N'-7, 0'-7
- 4) N'-2, N'-3, 0'-2, 0'-3

M'-6

The wall in N'-6, 0'-6 was proved to continue in M'-6 with two large conglomerate blocks, ca 1.0 m. long. The texture of the conglomerate is very brittle. Virgin soil (?) to the W of the wall. Unfortunately we also hit the water level, and the water was seeping out from the NE corner. In order to explore the area between the N end of the blocks and the modern fill, the edge of the fill was shaved at one point. Statue pass. appeared immediately, but also water. Since there was no sign of any more blocks, work stopped.

PZ 77-950 T PZ 77-951 P PZ 77-1094 I
 PZ 77-952 T PZ 77-953 P

N¹-6, O¹-6

removal of wheelbarrow
ramp cont'd. level 6, batt. 4
cont'd in S part of trench,
immediately N of well point
pipes. (Note that area south
of pipes have not been
excavated below level.)

fragments of wood stuck in
soil between stone and concrete
sample taken

PZ 77.948 W

M¹-6

level 5 batt. 1

level 5 defined as the level
below the surface of the
blocks (tilted, not standing
upright)

 Finds:

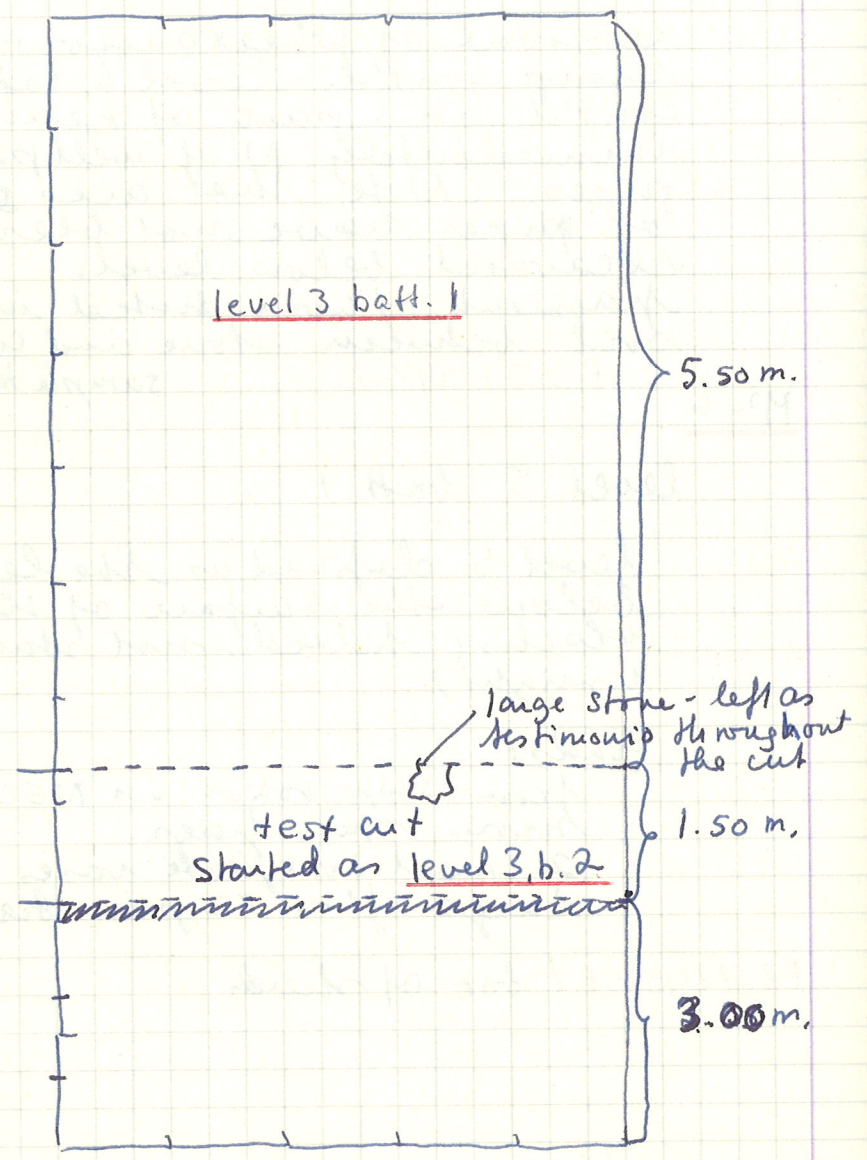
from slope to the NE corner:
more stat. frags.

2 small complete vases

large flat TC pan, basin

PZ 77.1095 P 1 box of sherds

N'-7, O'-7



not to scale

N'-7, O'-7

a cut was started, going E-W, with a width of 1.50 m. Purpose is to find a parallel wall which defines the large wall in N'-6, O'-6 and the pavement to the east of it.

The square had been started earlier - the test cut was then continued as level 3 batt. 2 (above, p. 91) level 3, batt. 2 (one small bag of shreds; one lead ring) level 3, batt. 3

Finds: very little pottery

PZ 77.944M lead weight

level 3, batt. 4

Finds: few shreds

PZ 77.945T few stat frags.

level 3, batt. 5

Finds: few shreds PZ 77.1070P

PZ 77.946T stat. frags. PZ 77.1071T

level 3, batt. 6 - dark heavy soil

Finds: few shreds

level 4, batt. 1

covers ponds to 2d hillfall in
N'-6, 0'-6, but fewer tiles.
dark, heavy soil.

N', 0', -2, -3, LEVEL 3 (INCLUDES SOIL ACCUMULATED OVER YEAR)

HEAVY PICK WORK COMPLETED AND TROWEL WORK BEGUN. ■

IN EASTERN CORNER FORMED BY μ + μ'' THERE ARE TWO

TYPES OF PAVEMENT AND POSSIBLY A WATER CHANNEL. ONE

AREA OF PAVEMENT HAS SMALLER STONES + IS AT A LOWER

LEVEL THAN THE SURROUNDING PAVEMENT. IN AREA

IMMEDIATELY EAST OF λ NO PAVEMENT AS OF YET HAS

BEEN UNCOVERED, FURTHER INVESTIGATION IS REQUIRED.

AN AREA C. 1.90 m. NORTH OF THE INTERSECTION OF K + λ

AND C. 0.30 m. EAST OF λ YIELDED A COMPARATIVELY

117-1100P

LARGE AMOUNT OF POTTERY. AREA APPEARS TO BE SUNKEN

WITH A PAVEMENT POSSIBLY PRESENT AT A LOWER LEVEL,

FURTHER TROWEL WORK IS NECESSARY. MATERIAL WAS

COARSEWARE WITH SOME GLAZE WARE, CHARACTERISTIC

6th C. RIM SHAPE PRESENT. MATERIAL THROUGHOUT AREA

WAS COARSEWARE AND SOME GLAZE WARE. A PIECE OF

LEAD 0.049 m. LONG WAS ALSO FOUND. ITS FUNCTION IS

UNKNOWN. REMNANTS OF WOODEN POST FOUND C. 0.30 m.

EAST OF μ'' . THE SURVIVAL OF ANCIENT WOOD IS DOUBTFUL,

AND IS MOST LIKELY MODERN.

M', N', -1 AREA BOUNDED BY λ , λ' , μ'' , + P' . LEVEL 3

HEAVY PICKWORK BEGUN + COMPLETED; TROWEL WORK

BEGUN. PAVEMENT APPEARS TO BE PRESENT THROUGHOUT

AREA, FURTHER TROWEL WORK NECESSARY. MATERIAL:

117-1105P

COARSEWARE + GLAZE WARE WITH 6th C. RIM FRAGMENTS.

N', -1 AREA BOUNDED BY λ , λ' , + K . LEVEL 3.

HEAVY PICKWORK BEGUN. MATERIAL: COARSEWARE

117-1104P

INCLUDING TWO LEKANE FRAGMENTS, ONE LOOMWEIGHT, AND

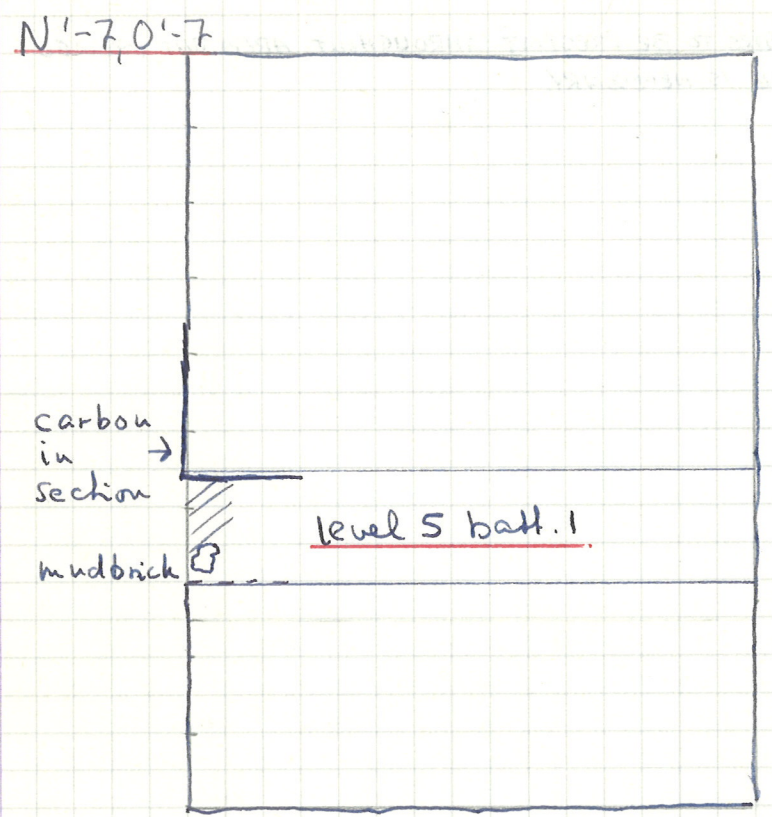
SOME GLAZE WARE. 6th C. RIMS PRESENT. PAVEMENT

APPEARS TO BE PRESENT THROUGHOUT AREA BUT TROWEL
WORK IS NECESSARY.

9000-11

9000-12

9000-13



Thursday July 14, 1977

work continued in these areas:

- 1) N'-7, 0'-7, N'-8, 0'-8
- 2) N'-1, N'+1, N'-2, 0'+1, M'-1, N+1

N'-7, 0'-7

level 4, batt. 1 cont'd

Find: 1 bag of sherds PZ 77.10

level 4, batt. 2 started

corresponds to carbon streak noted in N'-6, 0'-6 [definition of levels needs to be correlated between all these squares].

Find: 1 bag of sherds PZ 77.103

level 5, batt. 1

level of carbon. remains of a mudbrick found above the carbon. fills around and under the brick. brick photo grabbed and sample taken. PZ 77.100955

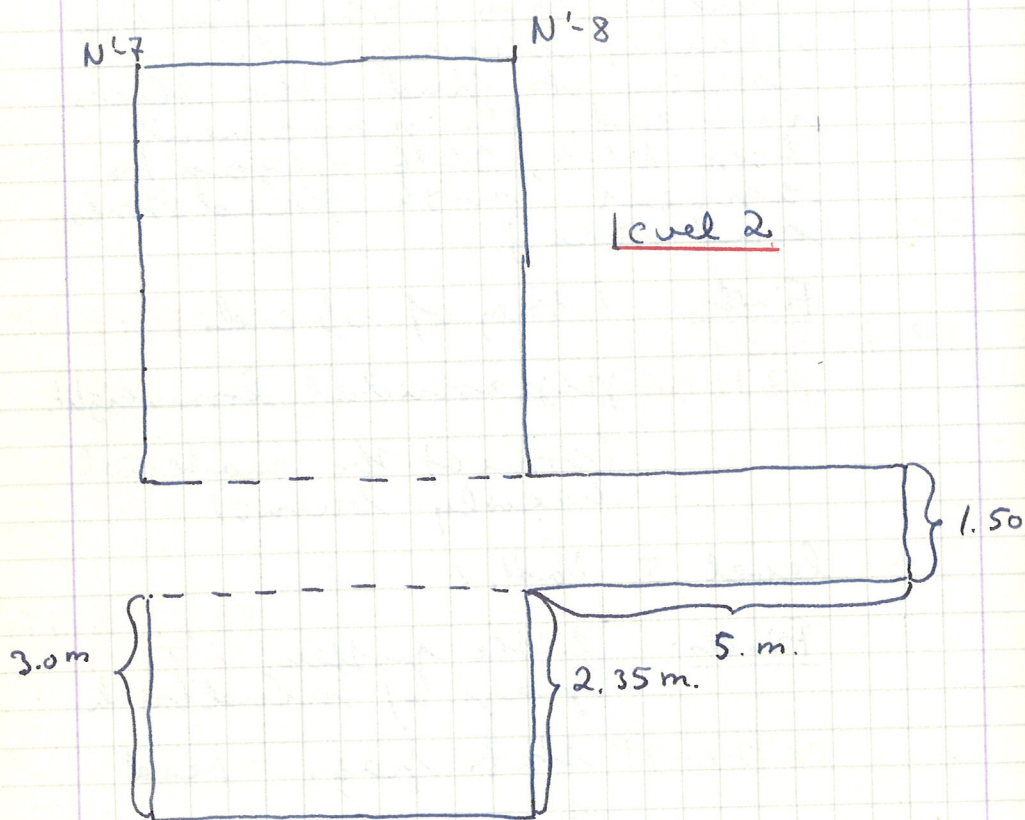
[This battuta should really count as two - Giuseppe was bearing through the soil trying to find the blocks. Instead, the pavement from N1-6, O1-6 began to appear with field stones and tile.]

Finds: 1 bag of seeds PZ 77.1075P
PZ 77.998T
PZ 77.1076T pyramidal loomweight.
(some of the material heavily burnt)

level 5, batt. 2

Finds: little pottery PZ 77.1077P
PZ 77.999P
frag. of mud brick
PZ 77.1017T stat. frag. - head
tile fall at E. end

level 6, batt. 1 = pavement
elevation -10.15
pavement cleared. tile-fall cleared and left at E end
one block from level 3 left as a testimonio (makes the trench look like a diomon)

N'-8, O'-8

Not to scale - schematic outline only

PZ 77.1078P

Findings: small cup, complete
PZ 77.1000P

N'-8, O'-8

a test cut was started to the E, as an extension (5m.), width of 1.50m. of the cut in N'-7, O'-7 (level 1 removed by bulldozer)

level 2, battuta 1

no finds! grey, dry soil

level 2, batt. 2

1 plain tile frag.

no pottery

sample taken of seed kernel

level 3, batt. 1

level defined by the dark heavy soil

Findings: few bones PZ 77.1088P

PZ 77.1078P } 2 sherds w. 'rippled design'
1 round loomweight

N'-8, O'-8

level 3, batt. 2

again, rich brown soil, 4-5
shines lifted (- unconnected)

Findings: (they hardly deserve
that name!)

tile shivers

4-5 sherds PZ 77.1089P

1 piece of glass (modern?)

level 3, batt. 3

Findings: very few tiles

2 bone frags
five sherds

PZ 77.1090P

level 3, batt. 4

Findings: few sherds PZ 77.1091P

1 RF sherd w. spiral
design

N'-1 AREA BOUNDED BY $\lambda, \lambda', +K$ LEVEL 3.

HEAVY PICKWORK COMPLETED AND TROWEL WORK NOW REQUIRED. THERE APPEARS TO BE A WALL AT THE 6th c. LEVEL RUNNING PARTIALLY UNDER λ . EXACT NATURE OF PAVEMENT CAN NOT YET BE DETERMINED.

117-1067P

N'+1 LEVEL 3

HEAVY PICKWORK ^{AND COMPLETED} BEGUN. A SMALL TWO HANDED VOTIVE VASE WAS FOUND AT THE LEVEL OF THE PAVEMENT. 117-990P
TROWEL WORK NOW REQUIRED.

N'-2, LEVEL 3

TROWEL WORK CONTINUES, PAVEMENT PRESENT THROUGHOUT AREA IN VARYING DENSITIES. FINDS WERE FEW IN NUMBER: SOME COARSEWARE AND GLAZE WARE WITH ONE BONE. SEVERAL PIECES OF A LARGE 6th c. BOWL WITH A HORIZONTAL BAND DECORATION AND SEVERAL PIECES OF A SMALL BOWL OR CUP WITH BAND DECORATION WERE FOUND.

117-1068P

O'+1 LEVEL 3 AREA WEST OF END OF K, RESTRICTED BY END OF K AND PUMP AREA,

117-1004P

HEAVY PICKWORK BEGUN. TWO SMALL TWO HANDED

117-1005P

VOTIVE VASES FOUND SIDE-BY-SIDE JUST WEST OF THE END OF K. VASES ARE OF SAME TYPE AS VESSEL FOUND IN N'+1 LEVEL 3 AND WERE c. 3.00m SOUTH EAST OF ITS FINDSPOT. A LINE OF STONES HAS APPEARED WHICH MAY

117-1092P

BE A CONTINUATION OF μ . MATERIAL SCANTY: COARSEWARE + GLAZE WARE.

M', N', -1 LEVEL 3 AREA BOUNDED BY $\lambda, \lambda', \mu''', +p'$

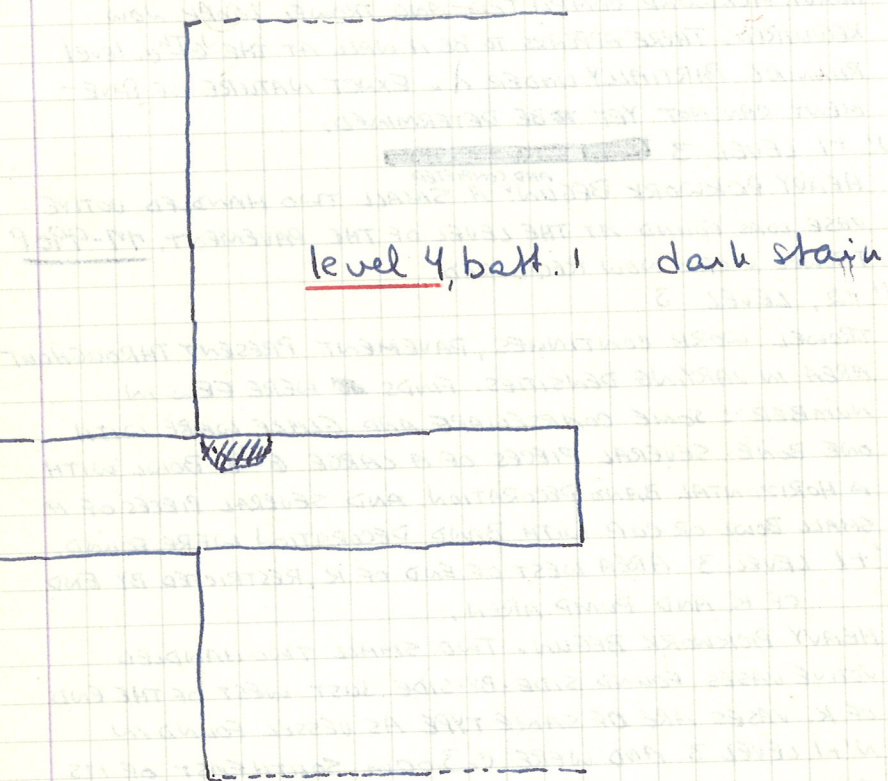
TROWEL WORK CARRIED OUT ALMOST TO COMPLETION.

PAVEMENT THROUGHOUT AREA IN VARIED CONCENTRATION. NORTHWEST AREA OF PAVEMENT SEEMS DEVOID OF

117-1065P

PAVEMENT. FINDS FEW: COARSEWARE + GLAZE WARE INCLUDING A COARSEWARE SPOUT WHICH MAY BE AN IRON SMELTING SPOUT. 117-989P

N'-8, 0'-8



FRIDAY JULY 15, 1977

Last day of full-scale excavation.

Work continued in the following areas:

- 1) N'-8, 0'-8
- 2) N'-7, 0'-7
- 3) 0'+1, N'-1, M'-1, N'-1, N'-2, 0'-2

N'-8, 0'-8

level 4, batt. 1 grey, heavy soil, 0.70 m. below present level 2. dark stain in soil at N edge of cut

level 4, batt. 2

few tiles visible

Finds: small bag of sherds

votive head PZ 77.1001 T

level 4, batt. 3

grey, clay-ish soil

some tiles; small bag of sherds

N¹⁻⁸, O¹⁻⁸

level 4, batt. 4

grey soil; very few sherds
and tiles

level 4, batt. 5

grey soils; small lumps
of mud brick

1 small bag of sherds, in-
cluding 1 stat. frag.

level 5, batt. 1

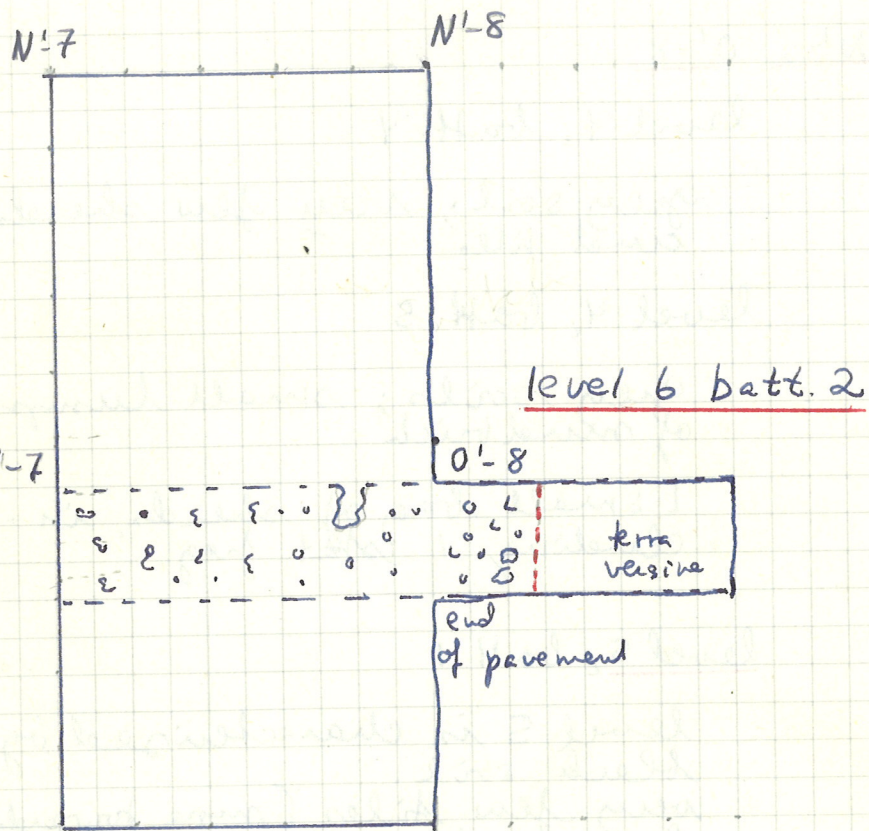
level 5 is characterized by
black soil.
very few tiles (none towards
the W. end)
small bag of sherds

level 5, batt. 2

tiles continue at the W-end
virgin soil at E end

level 5, batt. 3

tile fall at W end - black soil
virgin soil at E end



complete W. of cover tile

1 small bag of sheels

level 5, batt. 4

few tiles, few sheels, 1 cone

level 6, batt. 1

level 6 is characterized by a dark brownish-black soil - heavy - corresponds to pavement in N-6, O'-6 and N'-7, O'-7.

a few tiles in section
1-2 sheels

level 6, batt. 2

extent of pavement outlined - ends abruptly at 1.40 m E.

two pieces of wood PZ 77.1002
spindle wheel w. wood peg PZ 77.1003 T

N-7, O'-7

level 5, batt. 2

tile fall at E end

Findings: small vase w. narrow neck
few sheels

O' +1, LEVEL 3 AREA WEST OF K

AREA EXTENDED EASTWARD ALONG SOUTH EDGE OF K. LARGE STONE CONTINUE TO BE UNCOVERED WHICH MAY BELONG TO A WALL. THERE EXACT FUNCTION IS STILL NOT CLEAR. PAVEMENT PRESENT IN AREA. MATERIAL CONSISTS MOSTLY OF COARSEWARE WITH SOME GLAZE WARE, ONE FRAGMENTARY VOTIVE VASE, ONE CHARACTERISTIC 6TH C. RIM FRAGMENT. TROWEL WORK ~~CONTINUE~~ NECESSARY.

11-1093P

N' -1 LEVEL 3 AREA BOUNDED BY K, λ, + λ'

TROWEL WORK CONTINUES. PAVEMENT APPARENTLY PRESENT THROUGHOUT AREA. UNUSUAL CIRCULAR CONFIGURATION OF STONES IN PAVEMENT AREA. MORE TROWEL WORK REQUIRED TO DETERMINE WHETHER IT IS DUE TO ACCIDENT OR ~~WAS~~ SERVED SOME FUNCTION. NO CHARCOAL FOUND IN AREA TO INDICATE ITS FUNCTION AS A FIREPLACE. MATERIAL VERY SCANTY; LÉKANE FRAGMENT, SOME GLAZE WARE, 6TH C. RIM, AND A FEW OTHER ASSORTED COARSEWARE SHERDS.

11-1116P

M', N' -1 AREA BOUNDED BY λ, λ', μ''', + ρ' LEVEL 3.

TROWEL WORK BEGUN AND BROUGHT ALMOST TO COMPLETION. PAVEMENT PRESENT THROUGHOUT AREA. FINDS FEW IN NUMBER: ASSORTED COARSEWARE & GLAZE WARE FRAGMENTS. 11-1114P

N', O' -2 LEVEL 3 AREA ALONG EAST EDGE OF λ

PAVEMENT AREA PARTIALLY CLEANED. SHERD DENSITY CONTINUES TO BE HEAVY, MOST SHERDS WERE LEFT IN SITU FOR PHOTOGRAPHY. SOME STONES IN AREA APPEAR TO HAVE FALLEN FROM A WALL. MATERIAL: COARSEWARE AND GLAZE WARE, CHARACTERISTIC 6TH C. RIM TYPE. CLEARING OF AREA WILL CONTINUE.

11-1117P

Saturday July 16, 1977

Pranzo.

177
MONDAY JULY 18, 1977

N¹, O¹ - 2 LEVEL 3 AREA ALONG EAST EDGE OF PAVEMENT
PAVEMENT NOT PRESENT IN AREA BETWEEN LARGE WORKED
STONE LEFT INSITU AND THE WESTERN CORNER FORMED BY
M¹ & M². PAVEMENT AREA ABOVE NORTH EDGE OF WORKED
STONE MAY BE IN CIRCULAR CONFIGURATION, BUT EXACT
NATURE IS IMPOSSIBLE TO DETERMINE DUE TO PRESENCE
OF STONE.

O¹ - 2 LEVEL 3

TROWEL WORK CONTINUES FROM ABOVE. THERE IS EVIDENCE
OF PAVEMENT THROUGHOUT AREA, ALTHOUGH ITS STATE OF
PRESERVATION VARIES FROM PLACE TO PLACE.

O¹, P¹ - 1 LEVEL 3

AREA TAKEN DOWN ALONG WEST EDGE OF SOUTHERNMOST
FRAGMENT OF A DOWN TO THE CANAL. PAVEMENT
APPEARS TO BE PRESENT THROUGHOUT AREA, BUT TROWEL
WORK IS NECESSARY. MATERIAL IS PREDOMINATELY
COARSEWARE WITH SOME GLAZE WARE.

M¹ - 2 cleaning of walls

~~work, work~~ ~~work~~ ~~work~~

TUESDAY JULY 19, 1974

N'-1, LEVEL 3 CARBON SAMPLE

SAMPLE TAKEN BY BRUNO FROM UNDERNEATH WALL WHICH RUNS BELOW SECTION OF λ INTERSECTED BY λ' & K. LIMBS AND LENSES IN A GRAY CLAY MATRIX WITH REDDISH SAND PRESENT. ROOTLETS ALSO PRESENT. ASSOCIATED WITH PAVEMENT WHICH APPEARS TO RUN UNDER WALL. ACTUAL LEVEL = - 9.35m.

O', P'-2, -3 LEVEL 3 (AREA CONTAINS SOIL ACCUMULATED DURING THE YEAR)

WORKERS BEGIN CLEARING OF AREA SOUTH OF μ AND IN & AROUND B, V, AND Z. PAVEMENT APPEARS TO BE PRESENT IN PLACES, BUT MUCH MORE HEAVY PICKWORK AND TROWEL WORK IS NECESSARY. ONE NEARLY COMPLETE ROOF TILE HAS BEEN UNCOVERED IN P'-3. MATERIAL CONSISTS OF COARSEWARE AND GLAZE WARE: TWO LEKANE FRAGMENTS INCLUDING ONE LARGE TRIM FRAGMENT WITH A HANDLE, ONE AMPHORA HANDLE, ONE PYRIMIDAL LOOMWEIGHT, ONE "FLYING SAUCER"-OBLATE LOOMWEIGHT, FRAGMENTS OF SKYPHOS, CUPS, BOWLS, ETC.

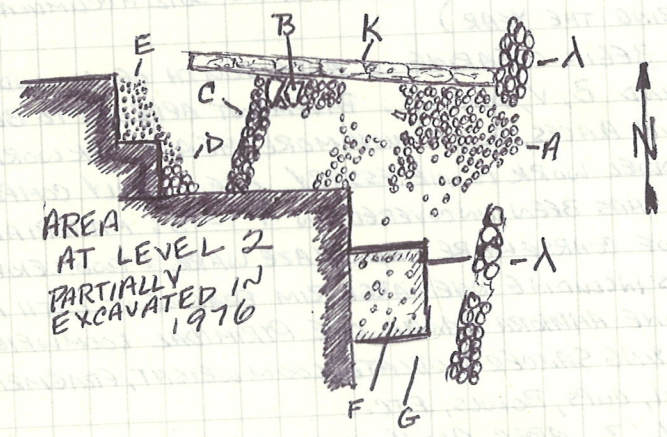
O'-1 LEVEL 3 AREA ALONG AND SOUTH OF K
TROWEL WORK CONTINUES. FINDS FEW: COARSEWARE WITH SOME GLAZE WARE. PAVEMENT DECREASES IN CONCENTRATION AND THEN DISAPPEARS c. 1.50 - 2.00m. SOUTH OF K. FURTHER TROWEL WORK IS NECESSARY.

M'-2 cont'd cleaning of walls -
points of interest noted in the
site plan

N'-6, O'-6 N-S profile drawn

WEDNESDAY JULY 20, 1977

— 0'-1 LEVEL 3 AREA ALONG & SOUTH OF K —



AREA AT LEVEL 2 PARTIALLY EXCAVATED IN 1976

- A. PAVEMENT WITH TILE & POTTERY FRAGMENTS & SOME STONES WHICH MAY HAVE FALLEN FROM ABOVE.
- B. FIELDSTONES & BLOCKS EXTENDING FROM THE WALL.
- C. WALL.
- D. CONCENTRATION OF FIELDSTONES.
- E. LAYER OF SMALL PEBBLES AND ROCKS.
- F. AREA WITH FIELDSTONES ON ITS SURFACE. LEVEL 2 PARTIALLY TAKEN DOWN IN 1976.
- G. AREA WITH LEVEL 2 REMOVED.

0', P'-3, -4 LEVEL 3 (INCLUDES SOIL ACCUMULATED OVER COURSE OF YEAR)

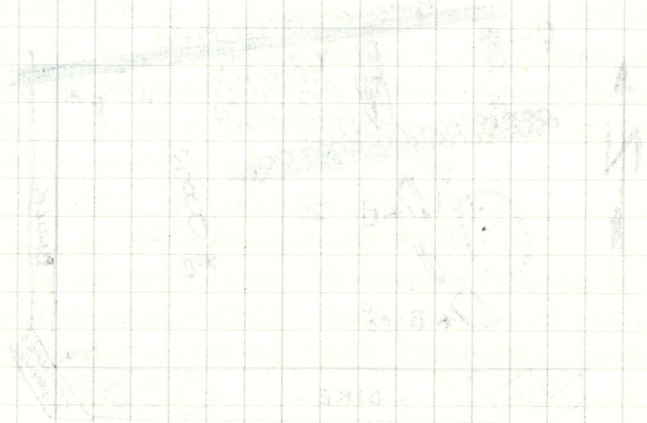
WORK CONTINUED FROM YESTERDAY IN AREA SOUTH OF M. FINDS FEW IN NUMBER: VARIOUS COARSEWARE & GLAZE WARE SHERDS, ONE PYRAMIDAL LOOMWEIGHT OF YELLOW-GREEN COARSEWARE.

0'-1 LEVEL 3 AREA ALONG AND SOUTH OF K.

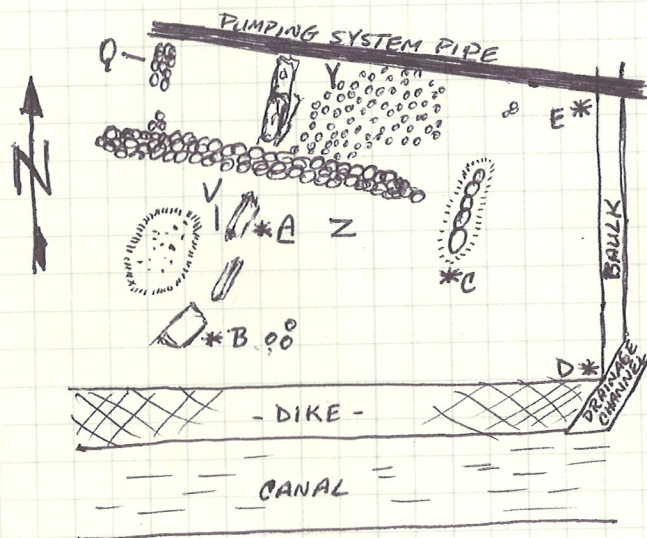
TROWEL WORK COMPLETED. MANY FINDS LEFT IN SITU FOR PHOTOGRAPHY. FINDS CONSISTS OF COARSEWARE AND SOME GLAZE WARE WITH ONE HALF OF A SHELL. THERE APPEARS TO BE YET ANOTHER WALL IN THE WESTERN PORTION OF THIS AREA. IT IS C. 0.35 m. IN WIDTH AND COMPOSED OF FIELDSTONES OF THE TYPE USED IN THE PAVEMENT. THE WALLS RUNS NORTHEAST - SOUTHWEST. IT APPEARS TO CONTINUE ON UNDER K INTO N'-1, HOWEVER TROWEL WORK IN THIS AREA HAS NOT BE COMPLETED.

THERE IS A CONCENTRATION OF STONES (FIELDSTONES & LARGE BLOCKS) WHICH EXTENDS EASTWARD FROM THE POINT WHERE THE WALL TOUCHES THE SOIL SUPPORTING K. CONCENTRATION IS C. 1.20 X 0.50 m. THIS MAY BE A CROSSWALL ASSOCIATED WITH THE WALL IN 0'-1. FURTHER TROWEL WORK IN N'-1 MAY CLARIFY THE SITUATION. THERE IS A CONCENTRATION OF FIELDSTONES IN THE SOUTHWEST CORNER OF THIS AREA WHICH MAY BELONG TO A WALL OR PAVEMENT, EXCAVATION FURTHER SOUTH IN 0'+1, -1 IS NECESSARY TO DETERMINE ITS EXACT NATURE. A LAYER OF SMALL PEBBLES AND ROCKS IS ASSOCIATED WITH THE ABOVE FIELDSTONE CONCENTRATION. IT LOOKS SUSPICIOUSLY LIKE A NATURAL DEPOSIT, HOWEVER DUE TO ITS POSITION THE POSSIBILITY CAN NOT BE EXCLUDED THAT IT IS A FINE PAVEMENT. FURTHER EXCAVATION TO THE SOUTH & WEST REQUIRED TO DETERMINE ITS EXACT NATURE. A COUPLE SMALL COARSEWARE SHERDS WERE ASSOCIATED WITH IT.

M-2 cont'd cleaning of walls
levels taken, and profiles of
banks drawn



LEVELS AT BASE OF BATTUTA 3 O', P'-3, -4



- A. = -9.31 m.
- B. = -9.30 m.
- C. = -9.31 m.
- D. = -9.21 m.
- E. = -9.20 m.

THURSDAY JULY 21, 1977

N', O', P' - 4 LEVEL 3 (INCLUDES SOIL ACCUMULATED OVER YEAR) LEVEL COMPLETED. FINDS INCLUDE COARSEWARE + GLAZE WARE FRAGMENTS WITH LEKANE FRAGMENTS, A PYRIMIDAL LOOMWEIGHT, A CONICAL LOOMWEIGHT, 6th C. RIMS, ONE BRONZE EAR RING AND A "FLYING SAUCER" - OBLATE LOOMWEIGHT WITH DECORATION CONSISTING OF STAMPED TRIANGULAR SHAPES WERE ALSO FOUND.

LEVELS AT BASE OF LEVELS WERE TAKEN.

N'-1, LEVEL 3 AREA BOUNDED BY K, λ, + λ'

TROWEL WORK CONTINUES. PAVEMENT APPEARS TO BE PRESENT THROUGHOUT AREA. COARSEWARE + GLAZE WARE SHERDS MAKE UP MATERIAL - ONE PYRIMIDAL LOOMWEIGHT.

Work w. sections and site plan cont'd. Tiles sorted and studied. The hypothesis was presented that some of the flat painted and angular cover tiles from the building in N'-6, O'-6 level 5 were used as building material for the walls in N'-3, N'-4 etc. Examples of such tiles in the walls were documented photographically.

In the process of cleaning the wall in N'-5, 6 and O'-5, 6 it became clear that the block on top of the block with the incised + and the block next to it (N) have large rust stain. Samples were taken, and the area photographed. The area under the block with the + was cleaned.

FRIDAY JULY 22, 1977

rain in the morning - cool

O', P' - 3, -4 LEVEL 4, BATT. 1

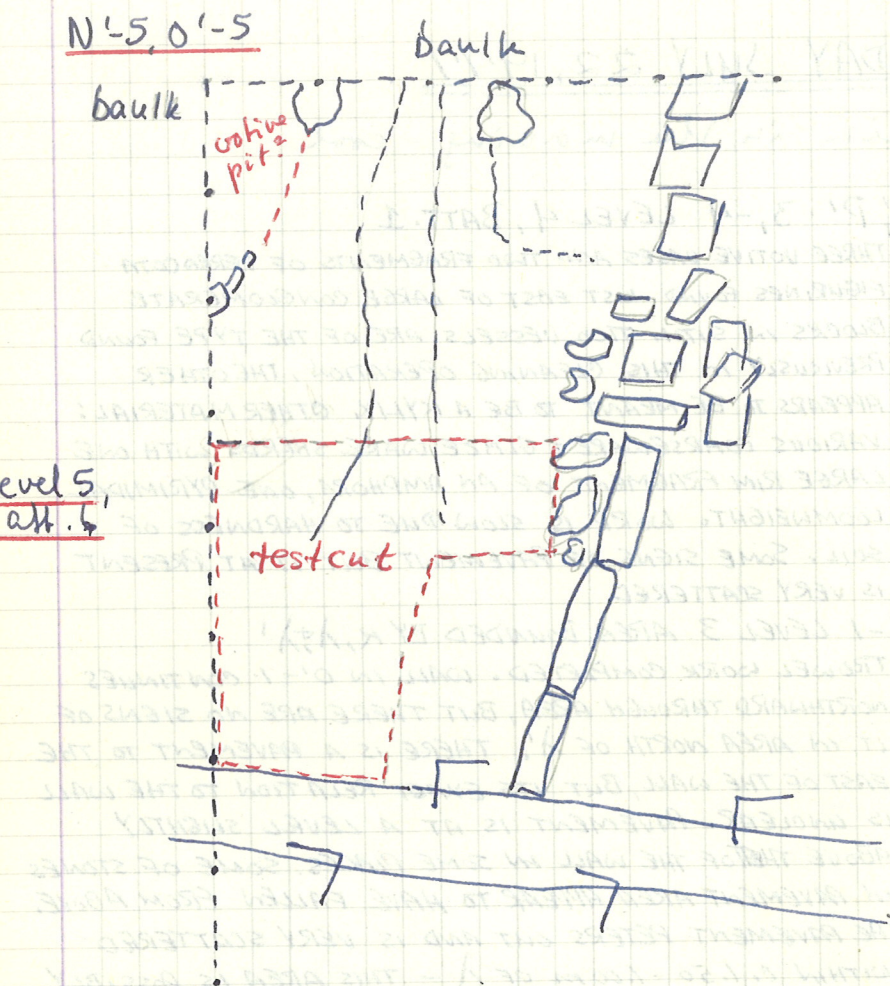
THREE VOTIVE VASES AND TWO FRAGMENTS OF TERRACOTA FIGURINES FOUND JUST EAST OF LARGE CONGLOMERATE BLOCKS IN SITU. TWO VESSELS ARE OF THE TYPE FOUND PREVIOUSLY IN THIS CLEANING OPERATION, THE OTHER APPEARS TO BE MEANT TO BE A KYLIX. OTHER MATERIAL: VARIOUS COARSEWARE & GLAZE WARE SHERDS WITH ONE LARGE RIM FRAGMENT OF AN AMPHORA, ONE PYRIMIDAL LOOMWEIGHT. WORK IS SLOW DUE TO HARDNESS OF SOIL. SOME SIGNS OF PAVEMENT BUT IT AT PRESENT IS VERY SCATTERED.

N' - 1 LEVEL 3 AREA BOUNDED BY K, λ , λ'

TROWEL WORK COMPLETED. WALL IN O' - 1 CONTINUES NORTHWARD THROUGH AREA, BUT THERE ARE NO SIGNS OF IT IN AREA NORTH OF λ' . THERE IS A PAVEMENT TO THE EAST OF THE WALL, BUT ITS EXACT RELATION TO THE WALL IS UNCLEAR. PAVEMENT IS AT A LEVEL SLIGHTLY ABOVE THAT OF THE WALL IN SOME PLACES. SOME OF STONES IN PAVEMENT AREA APPEAR TO HAVE FALLEN FROM ABOVE. THE PAVEMENT PETERS OUT AND IS VERY SCATTERED WITHIN C. 1.50 - 1.00 m OF λ - THIS AREA IS POSSIBLY FALL.

N' + 1 LEVEL 3 AREA EXTENDING WEST FROM ABOVE SECTION

TROWEL WORK COMPLETED. NO PAVEMENT IS DEFINITELY INDICATED. SEVERAL CLUSTERS OF STONES MAY BE PARTS OF WALLS OR BADLY PRESERVED PAVEMENT. IN FAR WEST OF AREA A CONCENTRATION OF STONES MAY BE PART OF A PAVEMENT. THEY ARE QUITE SCATTERED AND AT PRESENT IT IS IMPOSSIBLE TO DETERMINE THEIR EXACT NATURE. FUTURE EXCAVATION IN NEIGHBORING SQUARES MAY CLARIFY THE SITUATION. MATERIAL SCANTY: COARSEWARE AND GLAZEWARE



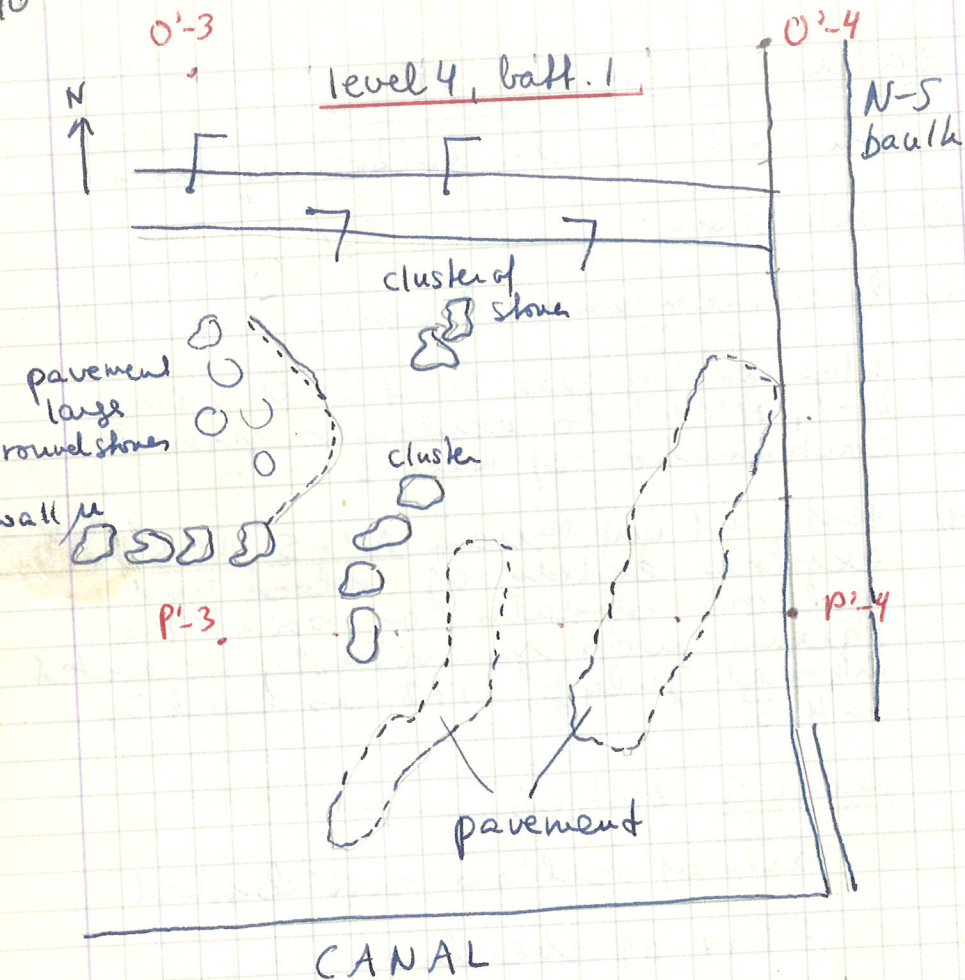
Saturday July 23, 1977

work cont'd in the following areas:

- 1) site plan
- 2) documentation of walls
- 3) cleaning of area W of wall T in L'-1, H'-1 to explore a possible continuation of wall t
- 4) test cut in square N'-5, 0'-5 to explore extent of black and yellow sheals of soil. The square was previously excavated through July 5, 1977 as level 5, batt. 5.

Level 5, batt. 6

area of yellow soil defined
1 box of sherds



Monday July 25, 1977

Work cont'd in the following areas:

1) O'-3, O'-4, P'-3, P'-4

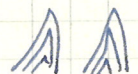
level 4, batt. 1 cont'd from Friday, towards the E. very hard soil.

Finds: 1/2 box of pottery

coarse ware

bronze pin

Ionic bowl frag.

rim w.  design

loom weight

ACTUAL LEVELS AT BASE OF LEVEL 4, BATT. 1 - O', P'-3, -4

A. -9.43m.

B. -9.43m.

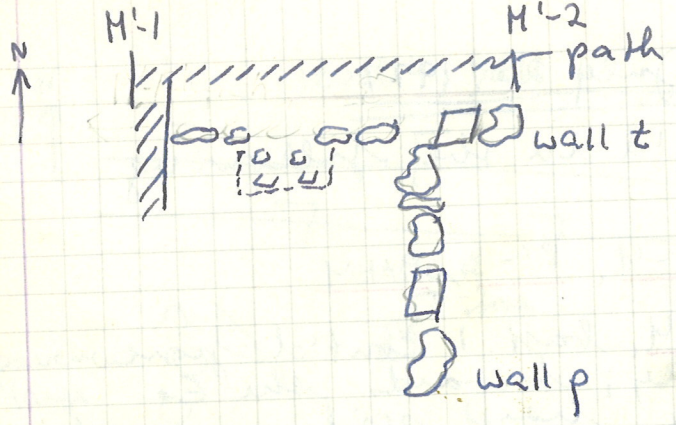
C. -9.47m.

D. -9.47m.

E. -9.33m.

(FOR LOCATION OF POINTS CF. p. 184.)

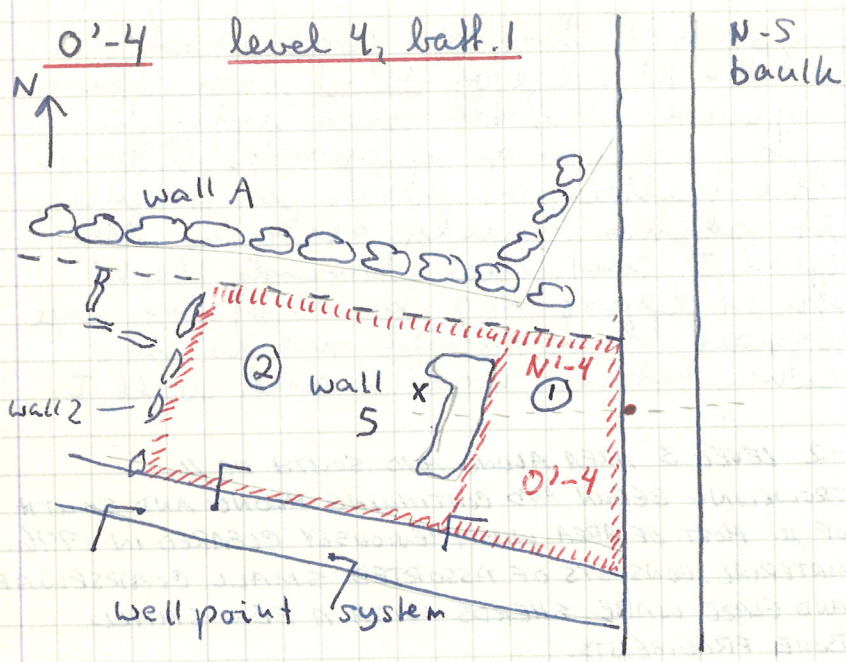
pavement appeared in uneven patches - clearing begun



2) a small test cut was made at the N edge of M'-1 into the square L'-P, the area which now serves as a path. Although the pattern of stonk is irregular, it seems fairly certain that wall T continues towards the W for at least 2.0 m. W of the large square block which marks the corner between wall p and wall T.

O'-2 LEVEL 3 AREA ALONG AND SOUTH OF μ . TROWELING BEGUN AND CONTINUING ALONG AND SOUTH OF μ . MOST OF AREA WAS PREVIOUSLY CLEARED IN 1976. MATERIAL CONSISTS OF ASSORTED SMALL COARSEWARE AND GLAZE WARE SHERDS WITH A FEW SMALL BONE FRAGMENTS.

Handwritten notes, mostly illegible due to fading and bleed-through. Some legible fragments include 'M'-1', 'M'-2', and 'wall t'.



x deposit of carbon

Tuesday July 26, 1977

A beautifully clear morning!

Work cont'd in the following areas:

1) 0'-4, towards N'-4

level 4 batt. 1

area defined by well point system, wall 5 and N-S baulk

Findings:

BF shed - 2 seated figs

6th cent. sheds - total 1/4 box

stones appeared at the N edge of the cut, below wall 5 - formation seems to be that of a pavement

2) cut'd towards the W - area defined by wall 5, well point pipe and wall 2

N'-4, 0'-4

level 4 batt. 1

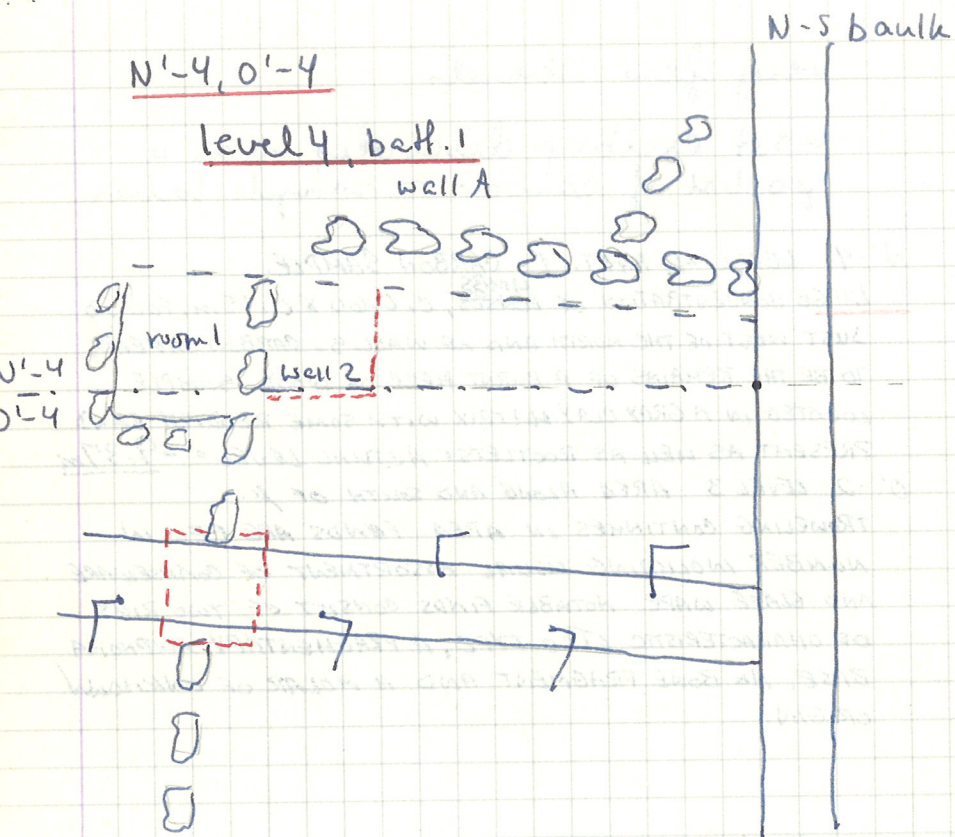
soil stiff, breaks up into large chunks - brownish-gray

very few sherds

most exciting discovery was a
pocket of carbon - sample taken

N^o-4 LEVEL 4, BATT. 1 CARBON SAMPLE
LARGE CONCENTRATION OF ^{LIMBS} LENSES, C. 0.60 X 0.15m, FOUND
JUST WEST OF THE NORTH END OF WALL 5. CARBON APPEARS
TO BE THE REMAINS OF A BURNT PIECE OF WOOD, SAMPLE
LOCATED IN A GRAY CLAY MATRIX WITH SOME REDDISH SAND
PRESENT AS WELL AS ROOTLETS ACTUAL LEVEL = -9.37m

O^o-2 LEVEL 3 AREA ALONG AND SOUTH OF μ .
TROWELING CONTINUES IN AREA. FINDS ARE FEW IN
NUMBER INCLUDING USUAL ASSORTMENT OF COARSEWARE
AND GLAZE WARE. NOTABLE FINDS CONSIST OF TWO RIMS
OF CHARACTERISTIC G.I.C. TYPE, A FRAGMENTARY AMPHORA
BASE, A BONE FRAGMENT AND A MOLAR OF UNKNOWN
ORIGIN.



Wednesday July 27, 1977

Work continued in the following areas:

- 1) The NW corner of cut 2 in N'-4, 0'-4 which was begun yesterday; along wall 2

area cleaned at the point where the wellpoint pipes cross wall 2 - cluster of field stones which would conceivably be part of a wall.

Find: small amount of pottery

0'-2 LEVEL 3 ALONG + SOUTH OF μ .

TROWELING FINISHED ON PAVEMENT PREVIOUSLY EXPOSED IN 1976. FINDS ARE THE USUAL MIXTURE OF COARSEWARE AND GLAZE WARE SHERDS, INCLUDES SOME BONE FRAGMENTS.

0', P' - 2 LEVEL 3, c. 1.90m. SOUTH OF SECTION OF μ EAST OF μ AREA PARTIALLY TROWELED BY PROF. CARTER YESTERDAY AND ^{ALMOST} COMPLETED BY STUDENT TODAY. RELATIVELY LARGE AMOUNT OF MATERIAL INCLUDES: 6TH C. RIMS, A FRAGMENTARY COARSEWARE LID, THE BASE OF A LARGE SKYPHOS AND THE INCISORS OF A HERBIVOROUS ANIMAL PLUS SOME OTHER BONE FRAGMENTS. MOST OF POTTERY FOUND IN AREA JUST TO THE NORTH OF THE PAVEMENT IN A SUNKEN AREA.

Thursday July 28, 1977

N', O', P' -3, -4 LEVEL 4 BATT. 2

WORKERS ARE TAKING AREA DOWN ONLY ONE - TWO CENTIMETERS IN A SPRUCING UP OPERATION. WORK COULD BE CONSIDERED EITHER AS AN EXTENSION OF BATT. 1 OR THE BEGINNING OF BATT. 2. A NAIL WAS FOUND JUST EAST OF THE EAST END OF M.

O' - 3 LEVEL 4 BATT. 2

NUMEROUS TERRA COTTA STATUETTE FRAGMENTS AND A FEW OTHER SHERDS FOUND JUST TO THE EAST OF THE NORTHERNMOST OF THE THREE CONGLOMERATE BLOCKS (cf. p. 184, point A). THIS IS THE SAME AREA WHERE EARLIER THREE VOTIVE VASES WERE FOUND (cf. p. 187).

THE PAVEMENT RECEIVED A FINAL SWEEPING AND WAS PHOTOGRAPHED IN COLOR.

Friday July 29, 1977

THE DAY WAS SPENT SPREADING GRAVEL ALONG THE WALLS TO PROTECT THEM DURING THE COURSE OF THE YEAR.

CELESTE WAS MEASURED AND REBURIED BY ALESSANDRO (FOR HIS NOTES OF THE "GOOFY" NOTEBOOK).

THE PUMPING SYSTEM WAS SHUT OFF AND THE PROCESS OF REMOVAL ~~WAS~~ BEGAN.

SATURDAY JULY 30, 1977

THE PLACING OF SAND AROUND WALLS WAS COMPLETED. THE PUMPING SYSTEM WAS LOADED AND CARRIED OFF LIDO DI PIZZICA.

— FINITO —

SUMMARY

Points of special importance

6th cent. pottery
 4th cent. pottery
 RF vase
 roof tiles
 TC statuettes
 votive vases
 deposits of votive vases + statuettes

are there two types?
 Greek ≠ indigenous imit.

pavement - field stone
 walls - construction of
 wall of 'sanctuary'
 reconstruction of buildings
 phases of buildings

what constitutes a 'sanctuary'?
 difference between 'sacred' and
 'profane'
 'light' stratigraphy - no evidence
 of area as being deserted or
 destroyed (except perhaps
 burnt layer in N-6, 0'-6
 importance of springs

relation between Pizzico - San
 Biagio - Incoronata - Metaponto
 parallels in Sicily? Greece?
 Italy?

1E 30.VI.77

CONCORDANCE OF LEVELS IN ADJOINING SQUARES

Level 1 = 'topsoil' fairly sandy soil
w. few artifacts; due to the slope
of the ground the thickness of
this level varies considerably;

also - the present surface level has
Level 2: in many places been removed
by the bulldozer; level 2 is therefore
the first one excavated. distinctive
features are layers of gravel and/
or tiles.

Level 3: defined by recognizable features -
mainly walls or tile falls

Level 4: defined by a recognizable
feature (wall, tile fall) below
that of level 3.

Level 5: only in N'-5/N'-8, O'-5/O'-8
recognized by dark soil (carbon)
and tiles

Level 6 only in N'-6/N'-8, O'-6/O'-8
level of pavement

Features

<p>L1-3 wall L' wall L' wall D</p>	<p>L1-4 wall L' wall E wall F (northern section)</p>
<p>M1-2 wall Z σ' σ A etc.</p>	<p>M1-3 wall σ' σ</p>
<p>N1-3 pavement fire place 2</p>	<p>N1-4 pavement room 1</p>

mod. fill

L = level

<p>L1-3 ref. in pencil to notebook PZ 1976-1977 ref. in ink to notebook PZ 1977</p>	<p>L1-4 L.1 p.147 L.2 p.147 L.3 p.55</p>
<p>M1-2 L.3 p.3</p>	<p>M1-3 p.1 p.131 L.2 p.141 L.3 p.153, p.45 L.4 p.157, p.59</p>
<p>N1-3</p>	<p>N1-4 L.1 p.131 L.2 p.135 L.2, ball. 2 p.139 L.3 p.165</p>
<p>L1-4 L.1 p.149 L.2 p.151 L.3 p.29, 39</p>	<p>M1-4 L.1 p.133 L.2 p.143 L.3 p.153, p.27, 65 M.4 p.159</p>
<p>N1-4 L.1 p.131 L.2 p.135 L.2 ball. 2 p.137 L.3 p.165</p>	

Features

M ¹ -5 fallen archi- tectural blocks	M ¹ -6 cont'd, fallen architectural blocks, N. end of 'long wall' shipe votiva	N ¹ -7 testcut pavement	N ¹ -8 testcut end of pavement
N ¹ -5 'water channel' (shipe votiva)	N ¹ -6 'long wall' pavement	O ¹ -7 testcut pavement	O ¹ -8 testcut end of pavement
O ¹ -5 'water channel' 'long wall'	O ¹ -6 fallen archi- tectural blocks pavement		

Levels 1-3

M ¹ -5 L.1 p.179 L.2 p.179 L.3 p.179, p.91	M ¹ -6 L.1 p.3, 13 L.2 p.111 L.3 p.124	ref. in pencil to notebook PZ 1976 & 1977 ref. in ink to notebook PZ 1977	
N ¹ -5 L.1 p.161 L.2 p.161 L.3 p.163 with p.27 with p.27 with p.27	N ¹ -6 L.1 p.183 L.2 p.183 L.2 bath.2 L.3 p.183, bath.2 bath.3 L O ¹ -6	N ¹ -7 — L.2 p.45, 89, 53 L.3 p.91, 153	N ¹ -8 — L.2 p.163 L.3 p.163
O ¹ -5 L.1 p.161 L.2 p.161 L.3 p.163 with p.27 with p.27	O ¹ -6 — L.2 p.183 L.2 bath.2 L.3 p.183 bath.2 bath.3	O ¹ -7 — L.2 p.45, 89, 53 L.3 p.91, 153	O ¹ -8 — L.2 p.163 L.3 p.163

devels cont'd

<p>M-5 —</p>	<p>M-6 L.4 p.123 L.5 p.151</p>	<p>N-5 L.4 p.71 L.5 p.71</p>	<p>N-6 L.4 p.1,81 L.5 p.101 L.6 p.115 b.2 p.129 b.3 p.133 b.4 p.137ff</p>	<p>N-7 L.4 p.155 L.5 p.159 L.6 p.161</p>	<p>N-8 L.4 p.169 L.5 p.171 L.6 p.173</p>
<p>O-5 L.4 p.71 L.5 p.71</p>	<p>O-6 L.4 p.1,81 L.5 p.101 L.6 p.115</p>	<p>O-7 L.4 p.155 L.5 p.159 L.6 p.161</p>	<p>O-8 L.4 p.169 L.5 p.171 L.6 p.173</p>		