

CANAL

May 27 - June 15  
1977

21  
86 01 155.000  
1720  
13 00  
860  
4400

21  
26  
260  
828



pignastyl

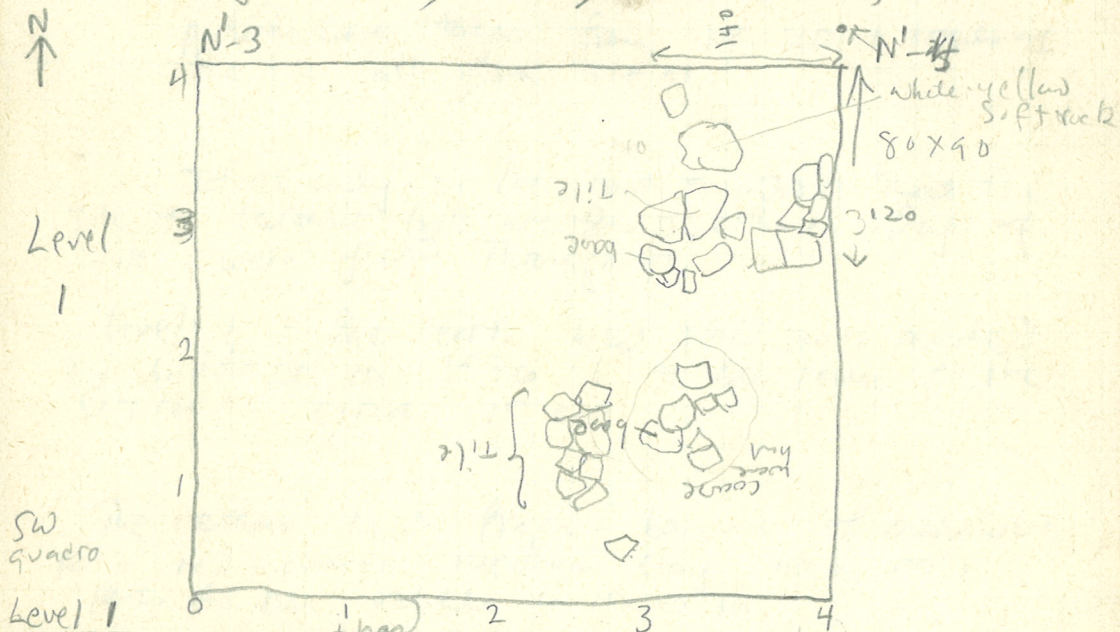
5



Friday May 27

Work began at 7am with 3 workmen (Alfredo G., Narciso Mimio). A 10 X 10 area was cleared of loose debris, photos taken 5.6.60. of work in progress site at beginning of from N. 2) from E.

After the area was cleared (Note large rocks one to plus marks at about 7 m X 6 m) a square 4 X 4 was excavated at N<sup>o</sup>-3 (→) actually a little more was excavated to the west where excavation stopped last season (i.e. beyond N<sup>o</sup>-3 + D-2 about 50 cm)



Soil was dry + filled with small smooth stones + some small pottery fragments color - medium-dark brown, ceramic (tile mostly)

Finds few.

grey ware, coarse ware, black glaze frags. a handle with a bull's head (?)  
rains

Canal  
↓



Friday May 27 -

Tile fall found

in NE quadrant more tile frags + ceramic frags found - including a pit bottom in situ.

a soft white-yellow crumbly rock found around wheeltilers + small - medium smooth field stones.

pictures were taken from NE, SW + details of the tile fall from S + N.

It is only in the east quadrant that the tile + ceramic falls are found, although frags of tile were found throughout.

level 1 = the earth below the level reached by bulldozer in 1976 + to the level of the tiles - circa 15 cm.

The ceramic band frags + base are of coarseware pit-red-orange medium clay base pit. parts of rim visible in the earth.

The other base + rim frags found in northernmost tile deposit are of soft pinkish clay, fine texture.

M'-3

N'-3 (12)



Monday May 30.

Work began at 7 with 3 workmen. The next 4 M square to the East of N'-3, cioè N'-4 was opened. The 10 M area will be dug to the level of the tile fall.

Small hand- ~~brass~~ iron Nail? 8 cm long, rusted.

Note That <sup>south</sup> towards the east the ground slopes down.

Level 1 - hard medium-dark brown earth filled with small stones, tile frags + pottery frags. The pottery from this level included coarse ware handles + rims, some imitation terra sigillata frag, 2 black glaze bases (each split in half) 1 small handle (grey-brown)

The square contained ~~no~~ evidence of ~~a~~ some continuation of the tile fall, - i.e. scattered tiles to the NW but no other large deposit as in N'-3.

The next 4 M square to the N (M'-3) was opened.

soil here less hard > in N-3 full of small stones + tile frags. Perhaps a slightly lighter brown in color

Lamp - with broken handle + chipped spot +  
Small found in SW level I,  
black glaze C. 8.5 cm



M'-3

N'-3 (12)



M'-3 - also a nail found c. 5 cm covered  
iron.

note a limestone fragment - perhaps  
architectural? c. 15 cm long.



← mold? placed on  
the heap.

M'-3

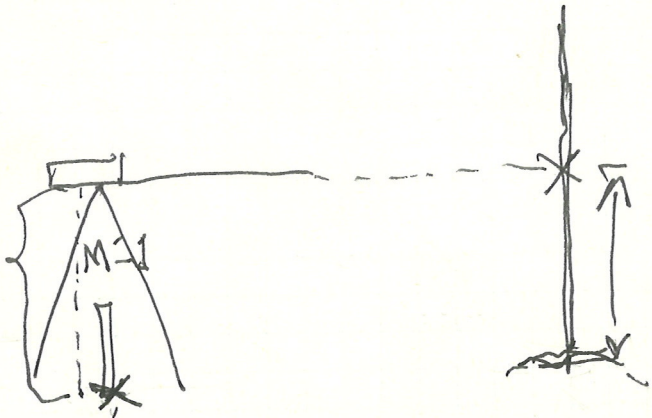
N'-3 (12)



+ 1.41  
- 7.78

- 7.78

height  
of instrument



-7.78

7.28  
1.41  
- 9.19

- 7.78

- 6.37

- 1.57

- 7.78



M'-1 - 7.78 ✓

height of instrument 1.41ms

(1) -1.50m = -7.87 ~~-7.41~~

-6.37

6.72

+1.50

(2) -1.38m = -7.75

(3) -1.30m = -7.67

(4) -1.60m = -7.97

(5) -1.58m = -7.95

(6) -1.64m = -8.01

(7) -1.37m = -7.74

(8) -1.46m = -7.83

(9) -1.90m = -8.27

(10) -1.60m = -7.97

M'-3 (11) -1.19m = -7.56

N'-3 (12) -1.34m = -7.71

Thursday May 31.

→ tile - pottery full is a gravelly <sup>layer</sup> surface, especially evident at the west + in the west bank, This gravel surface is also evident in M<sup>1</sup>-3, in the west. In N<sup>1</sup>-4 it does not <sup>appear</sup> to be present, perhaps this gravel surface (small river stones) which is not packed finely, can be attributed to a flooding which brought river stones over the tile deposits. The mixture of ceramic types (i.e. black glaze + Roman red slip ware) can also perhaps be attributed to the flooding which brought the Roman mixture down.

M<sup>1</sup>-4 The square ~~west~~ west of M<sup>1</sup>-3 was opened up. In this square as in M<sup>1</sup>-3 a North bank + a south bank remain. Therefore in these squares we are digging a rectangle, really 4M x 5M

NB in the area which we have been dealing with - this 10M area, gravel seems most prominent in west + less so in east.

→ in this area 10x10 - the ground slopes from N to S. ∴ in squares M<sup>1</sup>-3 + M<sup>1</sup>-4 level 1 is at a higher level > in N<sup>1</sup>-3 + N<sup>1</sup>-4 in M<sup>1</sup>-4 there is a hump of earth in the SW associated with 2 large rocks.

small find - ~~also~~ with tile deposit in SW corner of M<sup>1</sup>-4 - perhaps a type of loam weight, 5.5 cm figure 8 shaped





May 31. In the north of M<sup>1</sup>-3 + M<sup>1</sup>-4 the earth  
is full of small gravel + ~~the~~ river stones, more  
than in the west of M<sup>1</sup>-3.

B+W pictures taken of squares N<sup>1</sup>-3, +  
N<sup>1</sup>-4 from ~~South~~ East, west, <sup>NE</sup> N + NW.

In M<sup>1</sup>-4 - in the NE corner, the soil is  
more orange.

at 1.20 E-W + 70 cm N-S. were found two  
column drums, frags. The tops of which were  
noted in 1975 + on 1 of them a plus mark  
is clearly visible.

In situ, the drums have the following names  
heights:

A: diam? 50 cm  
length 30 cm

B: Diam c. 40  
height 25 cm  
(Thus for  
excavated)

n.b. fine painted sherd from ~~the~~ is visible  
decoration - a rim - 3 cm



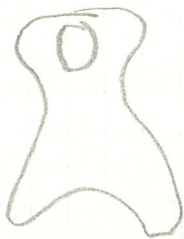
here - mixed - red slip, black slip,  
etc were

N<sup>1</sup>-3. Level 2 was begun after  
touch. This space full of gravel small over  
stone + tile + <sup>pottery</sup> fragments. It is not as hard as  
level 1 soil.

→ The tile fell in level 1 in all 4 squares  
near. Through the ~~center~~ of N-S axis of  
the 10 M area <sup>very</sup> slightly NE-SW.  
Towards the east, the # of tiles + gravel  
is less than in the west, the gravel  
area is fairly uniform throughout  
especially heavy in the NW of square

N<sup>1</sup>-3.

N<sup>1</sup>-3. Lamp base - no, lot + part of bowl.  
c. 7 cm long in level 2





June 1 1977, Weds.

N<sup>1</sup>-3

Work began 7 am. Same old 3 and me.  
The tiles from the tile fall in N<sup>1</sup>-3 were removed + placed with the other tiles from level 1 in that area.  
The pottery from the tile fall was also removed + placed in a box to be cleared.  
This included the small base + the pieces of the larger red ware vessel.

Work continued in level 2. <sup>N<sup>1</sup>-3</sup> Pottery finds were fairly numerous. Grey ware, <sup>large coarseware</sup>,  
Small find - round lamswright c. 8 cm in diam in level 2.

The soil in level 2 is a lighter brown than in level 1. Finds are more numerous than in level 1.

The small stones in level 2 are only at its surface. This level which is approximately 25 cm in depth is composed of a top layer of loose gravel + tile + pottery fragments + a lower one that contains less gravel. The soil color seems to be the same.

After a little brushing of layer 1, a small red coarse-ware bowl was found in situ near the large coarseware bowl in level 1.

a separate box, labelled level 2 material found under the tile fall was started. This material includes several restorable coarseware bowls.

note nice r-f rosette fragment



from level 2

another locumment, slightly larger >  
The first was found near the N. bank  
at the east. circa 10 cm in diameter

ht of level 2 -30 from N<sup>1</sup>-3 = -7.4)

$$\begin{array}{r}
 -7.71 \\
 -30 \\
 \hline
 -7.41
 \end{array}$$

Square N<sup>1</sup>-4 was ~~covered~~ excavated after lunch.  
level 2 here is a continuation of level 2 in  
N<sup>1</sup>-B.

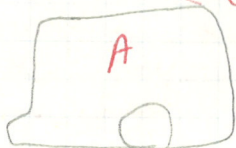
Level 2 in N<sup>1</sup>-3 has the gravel area at the top  
7 cm + through the west 1/2 of the square but  
at the ~~top~~ east side 1/2 the gravel is not  
present. That is at the area of the tile fill.  
The gravel area into the west of the tile fill.

Note that the material is houseware <sup>in level 2</sup> - in addition  
to the coarse ware amphorae + pots, 2 locum-  
weights, a strainer fragment

→ note that the gobs in N<sup>1</sup>-4 are in <sup>line with</sup> ~~the same~~  
the masonry fraps to the south.



A small rectangular block <sup>A</sup> 20x25 cm was found in level 2 at c. 60 cm west of N'-4. This block is <sup>South</sup> east of the columns in M'-4. It is not entirely rectangular but rather is L shaped at the western end. There is also a 4 cm ~~depth~~ deep hole in its N end. c. 1 m ~~was~~ south of N'-4 stake.



It would seem a piece of architecture - but it's very small.

A small black <sup>lamp</sup> ~~plate~~ ~~tile~~ found in N'-4 level 2

Today ~~at~~ June 3 (rain - June 2)  
7 am. Work continues on level 2, N'-4.

The small rectangular block was photographed + ~~then returned~~.

a large tile in situ near the rect block - also another rectangular block, slightly larger, right next to the tile + a fragment of a stone on the opposite side of the tile.

rect. block <sup>B</sup> 39 x 20.

Tile length - 35 cm.

note line ref shown with figure of woman - upper torso + neck, found near stone fragment. c. 12 cm below top of rock fragment.

June 31

Also near the block-rock-tile complex were found  
fragments of charcoal, samples of which were taken.

In the ceramic material from level 2 -  
coarseware, handles + rims, black glaze bases  
+ sherds, greyware fine very orange fine-  
medium ware pieces

Samples of bone frags taken


Level 2 samples from c. 30 - c. 50 cm in depth,  
letting deeper as we go east

near (to the east, c. 20 cm) + at a greater  
depth, found a small TC head? (wear  
parts?) in very damaged condition  
c. 4.5 cm

Found in level 2 N<sup>1</sup>-4

Fragment of Terra sigillata(?) plate c. 6 cm  
or is it rock + coarse?

Stamp - GNA I EI  
Λ Λ PAN



Fragment of lamp (Roman) found in  
level 2 near east end.



~~N.B. Not this door level 2~~

Level 2 - loamweight round sand

Note That level 2 is a deep one + that a  
row of tiles can be seen over + through it -  
esp. in the west. Attention will be paid to  
the medieval fund above + below this area.

rain forced stoppage of work at circa 3pm.

Monday June 6.

work with 3 workers, + Jack. N<sup>1</sup>-4 east  
end very finished.

Small vessel with red shipe found in 1st 20 cm  
of level 2 at east end of N<sup>1</sup>-4.  
That is, right at the level of the tile line.

Level 2 battuta 2 starting from the east  
end was begun.

At the east end, there seems to have  
been a greater level of earth or set of  
the tiles in level 2 - that is to say, the  
tiles are at a lower level.

There are fewer. So far no large coarseware vessels.  
It might be that the large quantity of material  
in level 2, battuta 1 came from the chert +  
depositing of materials from above.  
On the other hand, battuta 2 is not as  
deep as battuta 1.

~~In the east the soil~~

in N1-3 + N1-4, the ground slopes slightly from west to east. In the east, the earth still contains the mixture of materials found in level 12, battuta 1. It does not have gravel in it

→ There was a hole full over the entire 10 m area but it was now covered over with soil in the east end. We find holes at a lower depth here, > in the west.

→ charcoal heaps found level 2, battuta 2 near NE end

→ Piece of gray ware + tiles found right above continuation of wall <sup>found in 1978</sup> in O-4

"Continuation" of wall has apparently turned out to be a single oval stone, however a east-west wall has been found in the southern half of the square. Its relation to other walls is as yet unclear. Fieldstone + tile wall: smooth river stones 15-20 cm. max. length w/ tiles 10-20 cm. max. length.

wall  
A

Tiles found in assoc. w/ wall: tile frag. of yellow-green color believed to be of Greek type, reddish tiles also found.

Frag. of terra c. statuette found near wall: max. l. 3.6 cm max. w. 2.5 cm. — Possibly the knee of a leg.

soil claylike in consistency. No large vessel frags being found.

Special box labelled N1-4 (level 2, battuta 2) for material directly above or at level of walls A + B



Figure 8 Hammered, found in level 2, bathna 2  
mark of E-W wall



wall A

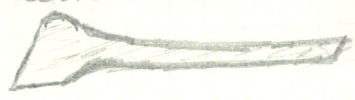
N of E-W wall - large rocks + medium-small stones found, also near the ash. Haps found in level 2 but north of a tile ~~layer~~ layer between ash haps + S-W bank.

Small black glaze base found in level 2, bat. 2 south of wall: h. 0.023 d. 0.029.



Bronze

1 Strigil frag. found at extreme NW limit of N-4 lev. 2 bat 2: max. l. - 0.07m; max. w. 0.017



at extreme NW end of N-4 <sup>layer</sup> ~~end~~ of small gravel

More red stones ~~found~~ at extreme NW end next to the area. Perhaps a large wall runs N-S & intersects E-W wall, yes! wall B C

Small Statuette fragment in N-4 level 2 bathna 2 found above tile c. 40 cm west of wall A.

+ level next to wall A in N-4 (was N 7.4) with haps of black (sl) c. bowl found

200 weight found at level 7 wall ~~A~~  
in N<sup>1</sup>-4 east end. C. 7.5 cm round

what we see seems have now is as well  
running NW-SE (wall A) intersected in  
NW end of N<sup>1</sup>-4 by wall C + in NW by  
wall B. Wall A continues east to intersect  
in N<sup>1</sup>-4 into N<sup>1</sup>-3 ~~the~~ running NW-  
SE.

June 7 1977.

Work continues in N<sup>1</sup>-3, level 2,  
battuta 2.

And- terracotta plaque fragment of  
Satyr head (?) level 2, battuta 2, N<sup>1</sup>-3.  
near western end

of the walls found yesterday in N<sup>1</sup>-4 + N<sup>1</sup>-3  
they are all composed of fired stone +  
tiles. Wall B, the ~~the~~ N-S wall is under

> wall A or wall C.  
we seem to have a small room in N<sup>1</sup>-4  
banded by C at east + B at west.  
The ~~the~~ medium held stones in this area  
perhaps indicate a pavement or floor. They are  
found in the SW of the room.  
Wall A continues beyond wall B to  
intersection with wall B or the west.  
perhaps in the east it also continues  
but at present this is not clear.  
There is also a tile falling vertically south of  
wall A.





Material from level 2, Batt. 2 to N1-3,  
concrete + black glaze frags. seems  
predominantly Greek

Small fragment of bronze. Found at west end of  
N1-3.

Material from walls A, B, C from deamp-saved.  
Greek frags.

June 7.

Square M1-3 level 2 was begun. This is  
the level under the ~~partic~~ not square.

(81) ~~also~~ on the NW a continuation of an NW-  
SE wall found in 1946 was found.  
This wall is composed of tile + stones, mostly  
medium. Soil had broken with tiles + some  
ceramic material

Teeth of an animal - here low. found

RF fragment - feet - conversation vase  
in C?

The wall in M1-3 - narrower > one in N1-4,  
Here the wall width varied between 35-40  
- (wall A B + C) + ~~80 cm wall B,~~  
is wall B a main wall to wall A  
~~the correct) to smaller side rooms?~~

not much material



June 8 1977.

Work began with 7 workmen.

in M<sup>1</sup>-3 level 2 being dug.  
Still brown hard soil with gravel to

→ The eastern 1/2 of square L<sup>1</sup>-3 is being prepared for excavation (actually c. 3.10 M, more  
the area  $> 1/2$ )

→ L<sup>1</sup>-3 level 1 - dark brown earth

in M<sup>1</sup>-4 level 2 being dug. This level is ~~a diff~~ that does not  $\rightarrow$  in M<sup>1</sup>-3 level 2 is the level under the gravel in M<sup>1</sup>-3 + under the tile fall in M<sup>1</sup>-3.

M<sup>1</sup>-3 - gravel found in west 1/2 also a few large field stones.

as noted - ground rises as head east. Large signs of field stones at N middle. (maybe a wall  $\downarrow$  to 01 & continues into L<sup>1</sup>-3.

in N<sup>1</sup>-3 level 2 ballustrade - note + suggested in N<sup>1</sup>-4 level 2 battlement tiles in ~~2 w~~ battlement N baulk at level of walls. No tile fall wall noted but these tiles are to be associated with the walls.

M<sup>1</sup>-4 level 2 - 2 iron weights (round)  
+ Drop tack found, Note loc #  
+ iron weights that have been found.  
1(?) mostly round but some figure 8 +  
pyramidal

Small votive pot found in M<sup>1</sup>-4 level  
2 near N end. Diam 2cm, ht 2cm  
2 black glaze.



M<sup>1</sup>-4 level 2  
Small of Rag - in decoration. found

M<sup>1</sup>-4 level 2 - lead piece 7 cm long -  
lead tube.

✓ M<sup>1</sup>-4 2 m from N2 corner -  
yellow soil appearing again & we found  
in level 1 - This is also present  
in L<sup>1</sup>-3, represents late cut through  
walls

Lead slug (coin?) found in clearing  
wall 01

---

L<sup>1</sup>-3 - Tile fall found in northern half of  
square which corresponds to tile fall in other  
quadrants of the area. Fall is in lowest section  
of level 1



L<sup>1-3</sup> yellowish soil has appeared in southern portion of square - it is apparently is part of a later water channel which was cut through this area.

---

M<sup>1-4</sup> level 2 iron object - perhaps tool? c. 14 cm. long (covered).

✓ M<sup>1-4</sup> level 2 TC Statuette arm + hand visible? c. 9 cm long. Found in extreme NE of level 2.

✓ M<sup>1-4</sup> Column fragment next to over discarded earthen found. This fragment is on its side c. 40 cm long.

---

In L<sup>1-3</sup> continuation of tile wall found in west 1/2 last year found. This wall runs NW - SE near N end of east 1/2.

---

11 M<sup>1-3</sup> level 2 an entire small pot in like at NE end 55 cm S + 82 W of

→ pottery in M<sup>1-3</sup> mixed. <sup>M<sup>1-4</sup></sup> Grey, black glaze, etc since level 2 is deeper in M<sup>1-4</sup> + the east 1/2. In M<sup>1-3</sup> an extra 15 cm removed. In these areas.

---

✓ fusiform unguentarium level 1 L<sup>1-3</sup> N end



found in

L<sup>1</sup>-3 Level 2 started. This is the level under the tiles ~~in level 1~~ in level 1. Bronze plaque fragment - c. 10 cm found in level 2.

M<sup>1</sup>-4 Level 2. Bronze (crescent) object - like a button, with a pin inside. Valve shield?

L<sup>1</sup>-3 E. 1/2 Level 1 = yielded relatively small number of sherds: various coarseware including one amphora handle, 1 fusiform unguentarium, + a few red figure fragments. At lowest level there was a tile + gravel fall w/ gravel concentration to the SE ~~and~~ + tile fall throughout upper Northern 3/4 of quadrant. Yellowish soil + pebbles marking old water channel slanted across quadrant along its southern edge.

\* L<sup>1</sup>-3 E. 1/2 LEVEL 2 Found a Roman coin, only partially cleaned, but appears to be Julio-Claudian emperor? Reverse = temple w/ closed gates (Janus?) SC (senatus consultum) [P[ro]viden[ti]a] under temple  
SEE BELOW

M<sup>1</sup>-3 level 2 - pot is removed - set of  
10 fragments. Flask in shape. handle broken  
long time ago. Plain red clay  
Dial of base 7cm ht 8cm





M1-3 Level 2  
 Small votive bowl 1/2 found b.H.W  
 red shrapel inside.



Diam 5 cm  
 Ht 2 cm

L1-3 E. 1/2 LEVEL 2 CANAL : COIN

~~OBVERSE: DIVUS AVGVSTVS PATER~~

REVERSE:



Found in area of irrigation channel, therefore is in disturbed soil.

OBVERSE



DIVVS AVGVSTVS PATER  
 ISSUED BY TIBERIUS?

M1-3 + M1-4 - Tile fall over well.

0-1 - mostly being removed.

N. level 2 is a very deep one, esp. in west. In a way, it is probably not

the same level as level 2 on the east

2 had gravel in it + was much shallower. But both are below the tile fall found in level 1.

seem to have layer of dark earth of varying thickness cover a fall of tiles & cover a wall.

L1-3 E. 1/2 Level 2 Found Fragment of terra cotta figurine.

Also what appears to be a continuation of wall in '76 excav. portion of quadrant of L1-3

1. Walls are becoming extremely complicated.

June 9, 1977

work continues in M<sup>1</sup>-4 level 2 + in  
L<sup>1</sup>-3 level 2.

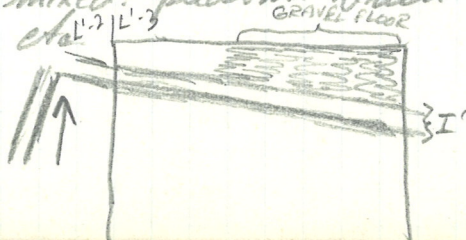
50 cm of E-W baulk being removed  
in btwn M<sup>1</sup>-3 + N<sup>1</sup>-3 + M<sup>1</sup>-4 + W<sup>1</sup>-4,  
(The 50 cm in M<sup>1</sup>-3 + M<sup>1</sup>-4)

More of wall I' continuing in M<sup>1</sup>-4,

↙ Square L<sup>1</sup>-4 being opened up.  
Level 1 - dark brown earth except  
where the yellow channel comes  
through.

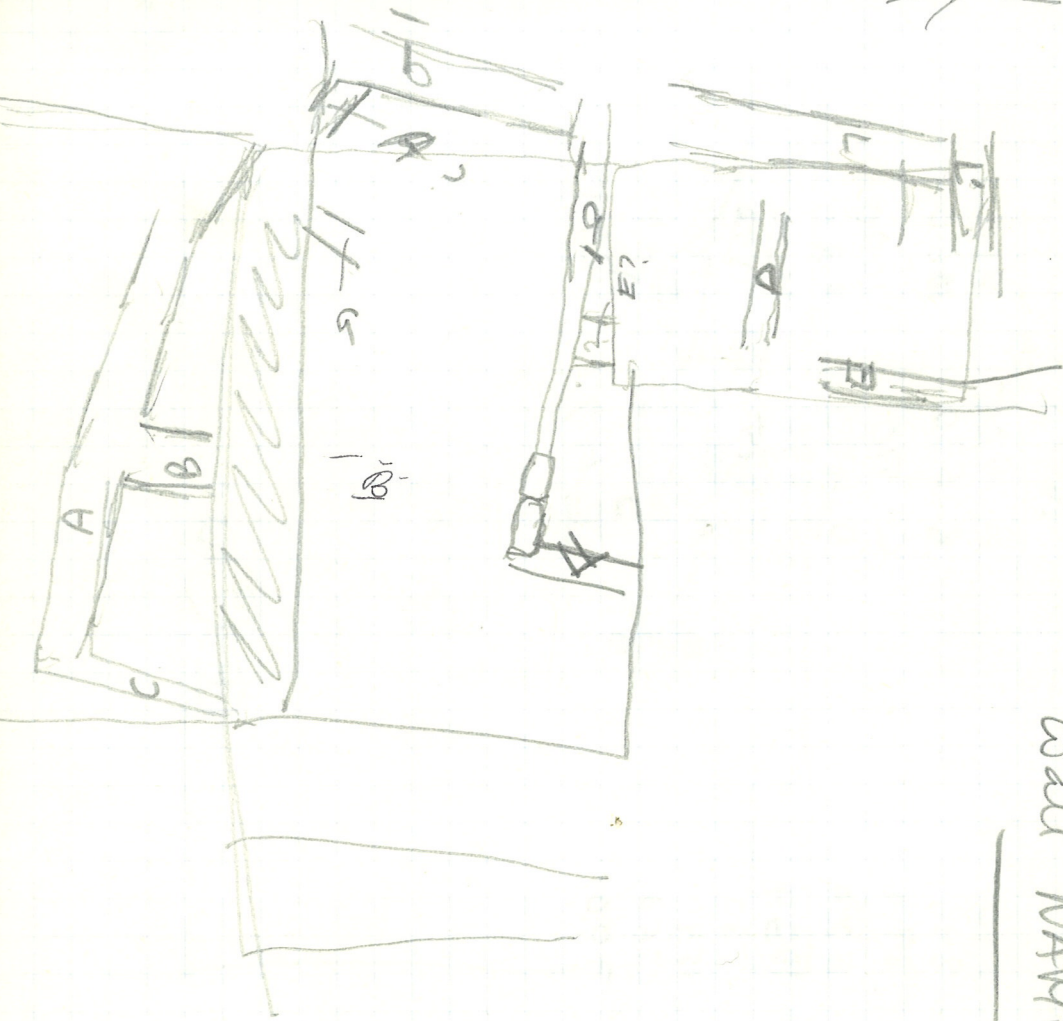
↘ baulk being narrowed to make room  
for more things to appear.

✓ L<sup>1</sup>-3 E.  $\frac{1}{2}$  Level 2 - Continuation of  
Wall I' has appeared in North section  
of quadrant. Wall is composed of tiles  
piled on one another. In NE. corner there is possibly  
a gravel floor wh. disappears to the W. Material  
of area is mixed, predom. brick but of some  
gray ware etc.





N  
↙



WALL MARKS

442 513  
2  
14

N1-3

A	270	540
B	423	846
C	447	894
D	312	624
E	517	1034
F	780	1560
G	770	1540
H	830	1760
I	350	700

1780  
1560  
7+0  
40

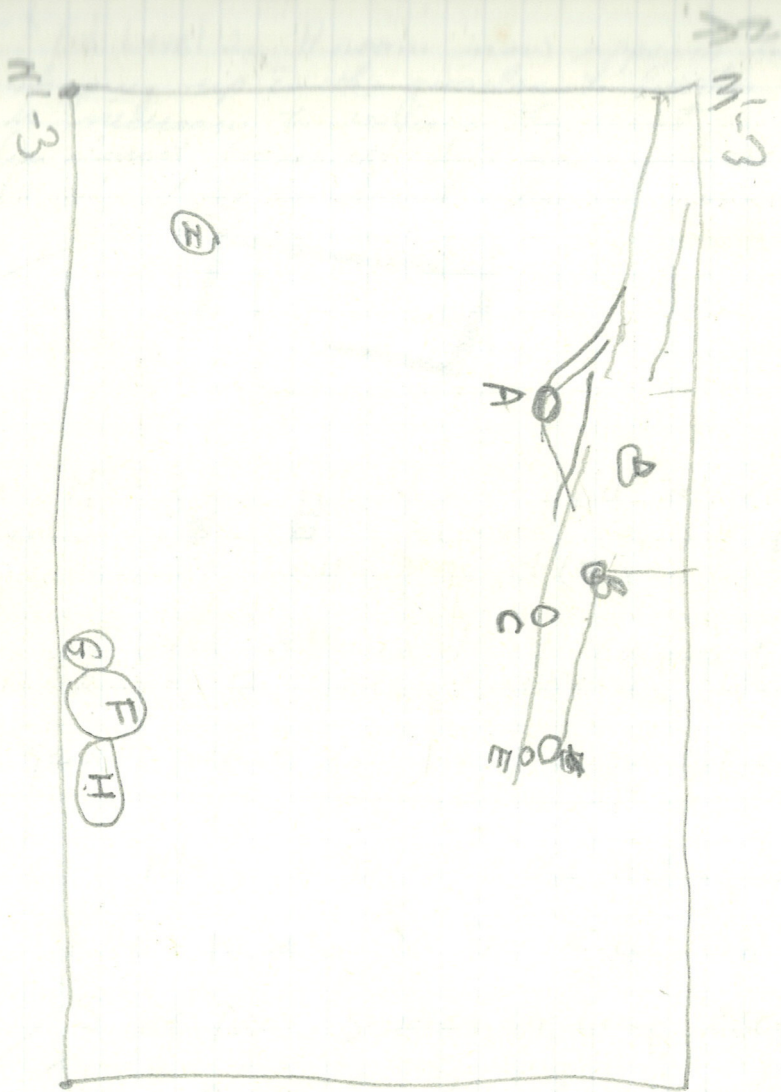
N1-3

A	405	810
B	530	1060
C	570	1020
D	490	980
E	570	1140
F	675	1350
G	640	1280
H	735	1470
I	147	294

625  
2  
1250  
735  
2  
1470  
1470  
2  
2940

572





L<sup>1-3</sup> E<sup>1/2</sup> Level 2 A room now appears to be  
 shaping up in the quadrant. Further cleaning  
 is necessary to confirm the point  
 An almost complete tile has appeared near the  
 E. edge of the quadrant w/in the room



in M<sup>1-3</sup> - M<sup>1-4</sup> - wall of concrete  
 running N-S. interlocked in  $2\frac{1}{2}$  f M<sup>1-4</sup>  
 by anchor wall -  $\perp$  to it (F)  
 well of in M<sup>1-4</sup> (concrete piles +  
 headers + 2 large concrete blocks  
 gravel surface in M<sup>1-4</sup> - in NE end

---

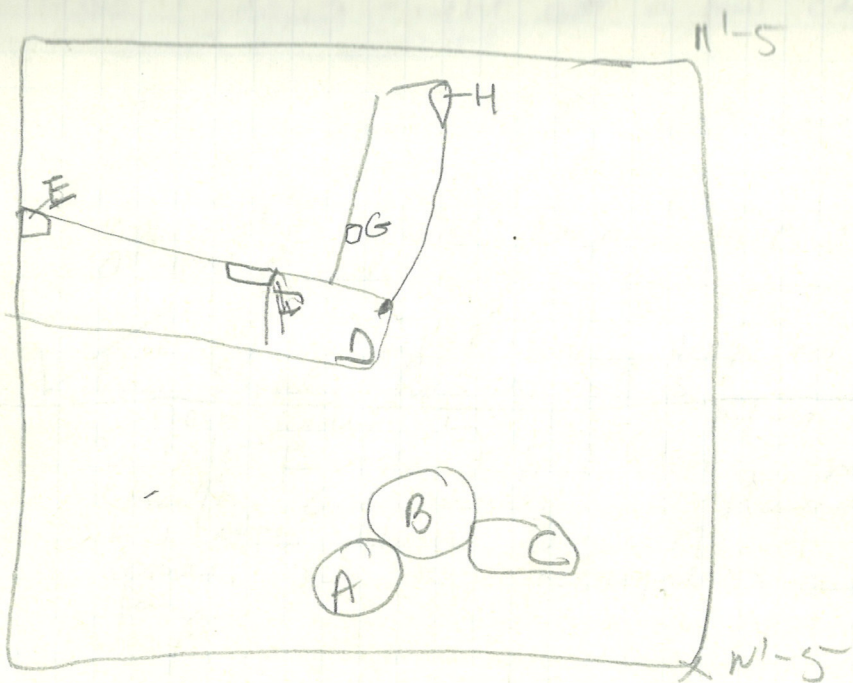
in M<sup>1-3</sup> + M<sup>1-4</sup> a rectangular area  
 1.90 N x S. X 7. EW in the  
 S of the squares is being excavated.

This area is S of wall of + steps  
 at the column base.

Level 3 Batt. Under wall of level,

→ in level 3 Batt. 1  
 a RF frag. female upper





N-5

A	550	
B	502	1004
C	476	940
D	379	758
E	530	1060
F	460	920
G	345	690
H	215	430

322  
 $\frac{58460}{20}$

N-5

A	370	740
B	350	700
C	290	580
D	345	690
E	600	1200
F	500	1000
G	390	780
H	450	900

215  
 2  
 50

145  
 $\frac{90}{20}$

Torso - done - right ~~at~~ a few cm below level of wall 0!

Tiles in situ slightly below level of wall 0!


Notice also gravel layer in NW, at level of walls.

✓ L<sup>1-4</sup> level 1 is very deep as hill slopes steeply from N → S

There walls in M<sup>1-3</sup> M<sup>1-4</sup> + U<sup>3</sup> constructed of tile + field stones, mostly smooth, occasionally conglomerate + 1 large block in M<sup>1-4</sup> at corner. This a rectangular one 40cm long.

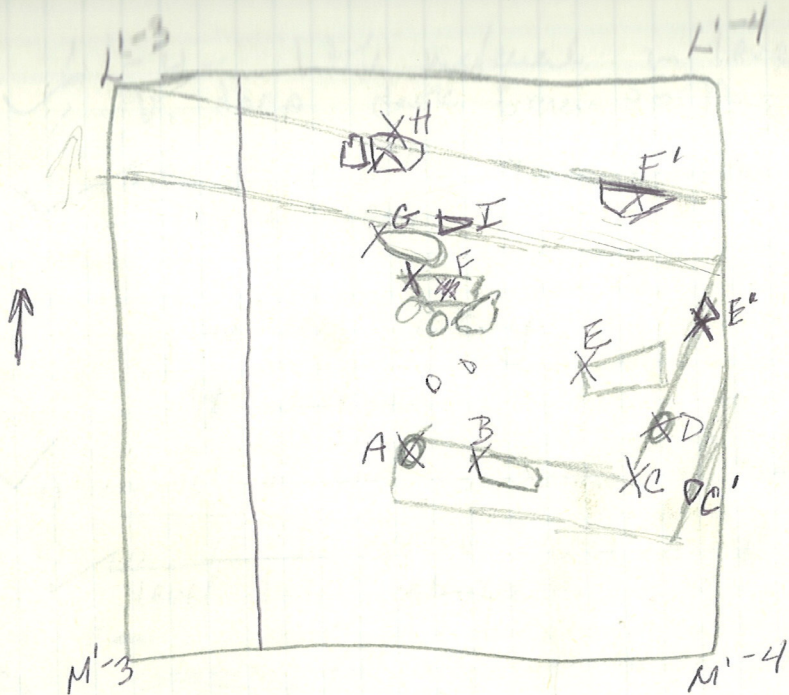
Area S of wall in M<sup>1-3</sup> + M<sup>1-4</sup> Tiles in situ also at west end c. 10 cm under wall level. Material in level 3 <sup>Battin</sup> mostly green, black slip + coarseware.

✓ L<sup>1-4</sup> level 1 - finds very few: a few pieces of coarse ware + tiles.

\* Found two pieces of thin metal; from something which was apparently round in configuration.  Appears to have a

slightly upturned rim





	<u>M'-3</u>	<u>297</u> <u>394</u>
A	297	5.94
B	338	676
C	425	850
<del>C</del> C'	463	926
D	477	954
E	496	992
E'	560	1120
F	470	940
G	487	974
H	505	1010
I	506	1012
F'	58	1162

	<u>L'-4</u>
A	432 864
B	422 844
C	430 860
C'	423 846
D	340 700
E	257 514
E'	232 464
F	235 470
G	219 438
H	250 500
I	2 4
F'	140 280

✓ L'-4 - little material in level 1 +  
V. deep dark brown earth

✓ area S of ol - Tiles in situ - material  
Batt. 1 level 3,

June 10 Friday.

8 workmen,

✓ 1) in L'-4 work continues in level 1.

2) ✓ in M'-3 + M'-4 area S of wall of  
level 3 - battuta 2.

→ 3) <sup>Sq</sup> square N'-5 is being opened.  
level 1.

✓ in area S of ol wall M'-3 + M'-4  
lev. 3 Batt #2 - round limestone  
Charcoal  
Stalactite frag found (9cm long)

→ 4) note N'-5 - former down slope of  
then M+L levels.

— level 3 Batt 1 in M'-3 - M'-4 area  
is 10cm level 3 Batt 2 - 10-12cm

✓ material from l. 3 Batt 2 - mostly sk  
concrete - small and grey ware,  
porcelain Cer



Under Tiles noted in level 3 is a  
poor stone wall running SW-NE at W end  
of area S of old wall in M<sup>1</sup>-3 +  
M<sup>1</sup>-4,

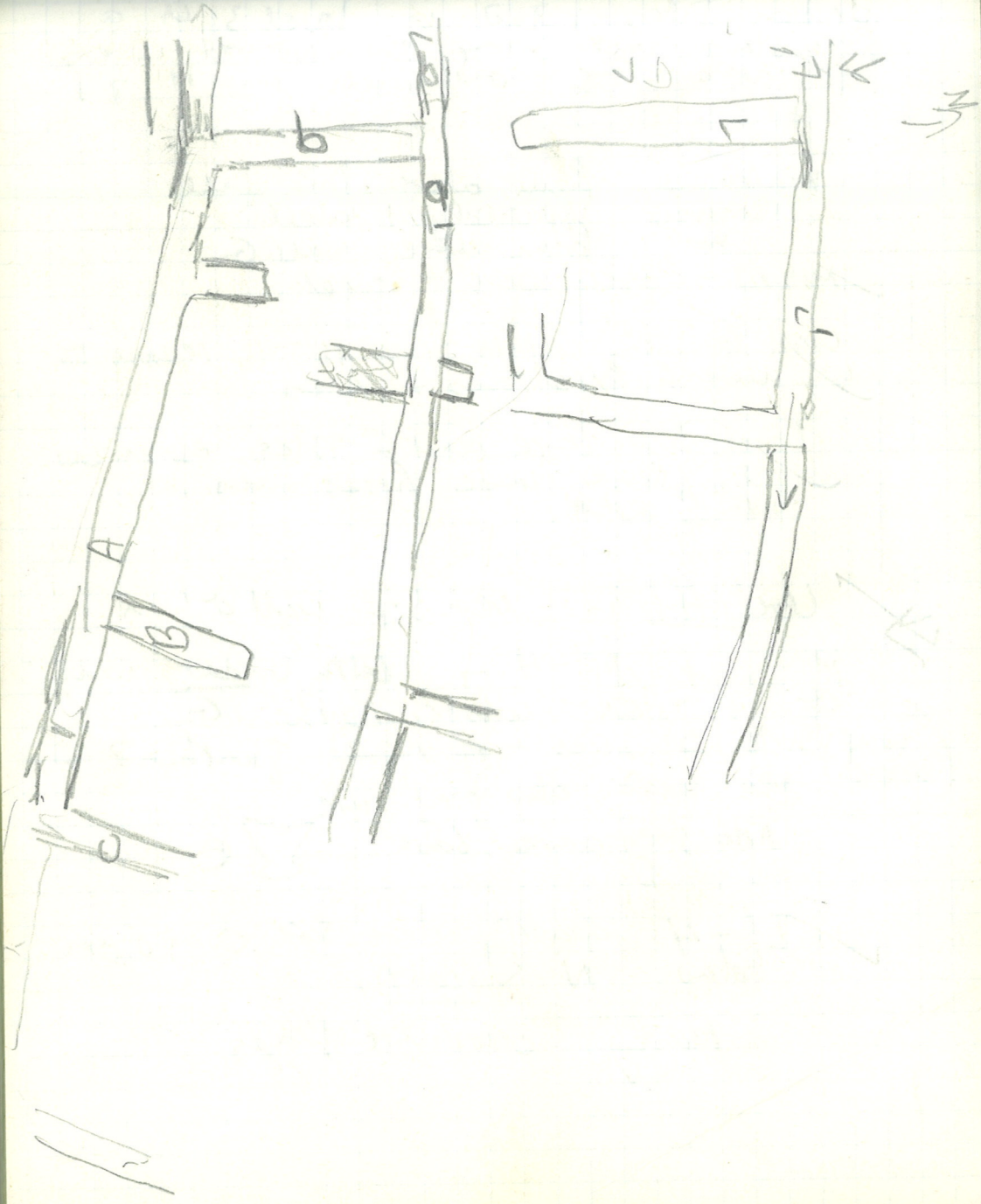
Material from above this wall,  
removed separately + labelled,  
from above wall G  
Mixed - grey ware + Greek.

Wall G in M<sup>1</sup>-3 + M<sup>1</sup>-4 seems to  
be made of holdstones + tiles

Level 3 - large amount of Tiles esp in W  
+ E, some large holdstones in  
center of area.

Level 4 in area S of wall G in  
M<sup>1</sup>-3 + M<sup>1</sup>-4 - burn under wall  
G + Tiles assoc. with G,  
(w of) note 2 pieces - 1 ribbed fragment in  
wall G) red band, also grey ware  
note grey ware base

M<sup>1</sup>-4 Gravelly dark soil c. 50 cm  
below N scarp,  
mostly concave bays





Several frags of postcardlike brick found in  
site c. 2.60 M from E end of area 5 of  
of wall in  $M' - 3 + M' - 4$ . It is interesting  
also to note Level 4 that associated  
with these frags were several pieces  
of charcoal.

Same here - Sreyih

9 ~~Be~~ in  $N' - 5$  - nice mixed slagware  
frag. wall N-S long up in <sup>west</sup> end  
of  $N' - 5$  level & below this -  
Level 2.

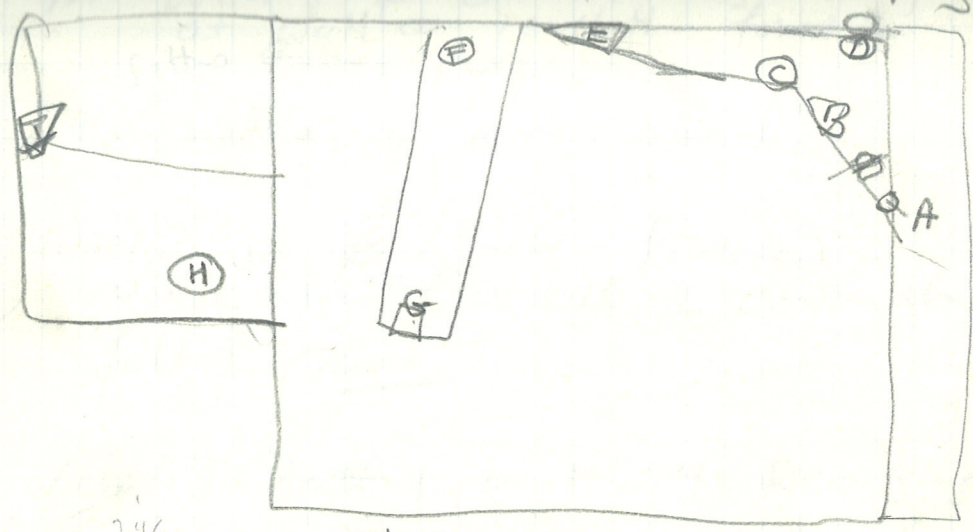
~~Rest~~ of area 5 of wall of  
in  $M' - 4$  covered up level 3  
Batt. 1

~~✓~~ in  $L' - 4$  - wall appearing - carbamate of  
wall  $L'$  in  $L' - 3$ ,  
charcoal frags also found in area (or?)  
w of space  $or' - 3$

~~✓~~ In 3H area 5 of wall of  $M' - 4$   
carbamate of wall of found at  
level 3 Batt. 1 ✓

area 5-101

N13



<u>N1-3</u>	246	592
A	246	592
B	155	310
C	115	230
D	163	326
E	32	64
F	130	260
G	223	446
H	350	700
I	452	904

<u>N1-3</u>		
A	309	618
B	460	920
C	440	880
D	465	930
E	460	920
F	457	914
G	371	742
H	446	892
I	577	1154

$$\begin{array}{r} 465 \\ \underline{930} \\ 171 \\ \underline{242} \\ 446 \\ \underline{892} \\ 577 \\ \underline{1154} \end{array}$$

$$\begin{array}{r} 163 \\ \underline{326} \end{array}$$



in areas of  $\sigma^1$  in M1-3 + M1-4  
at wall on level 4 - found 2  
sutton ~~stone~~ frags.

Little material in N1-5 level 1.

✓ level 2 in ~~N1-4~~ L1-4 started,  
under level of wall & continues  
full of gravel.

✓ Level 3 Batt 1 in M1-4 area S of  
 $\sigma^1$  cell extends to level of continuation  
of that wall to the SE. Then  
level 4 begins. This is the  
level under the level of wall.

in N1-5 - level 2 drier soil, lighter  
in color. Boreham small part of tiles  
& ruffs in NW corner. Still not  
much material - perhaps outside  
the concentrated area.

Monday June 13 1977.

Work sites in 3 areas -

- ✓ 1) N'-5 Level 2 - under level f wall A?
- 2) area S of wall 5' in M'-4, level 3  
area around column Batt. 1.
- ✓ 3) L'-4 level 2 ~~area~~

Stamped kommissat found in N'-5 level 2.

N'-5 - level 2 - gravel, tiles, ~~large~~-medium  
potsherds. - in NE end.  
JA

L'-4 level 0 - gravel.

N'-5 level 2 - Found numerous statuettes  
fragments in NW. corner of square

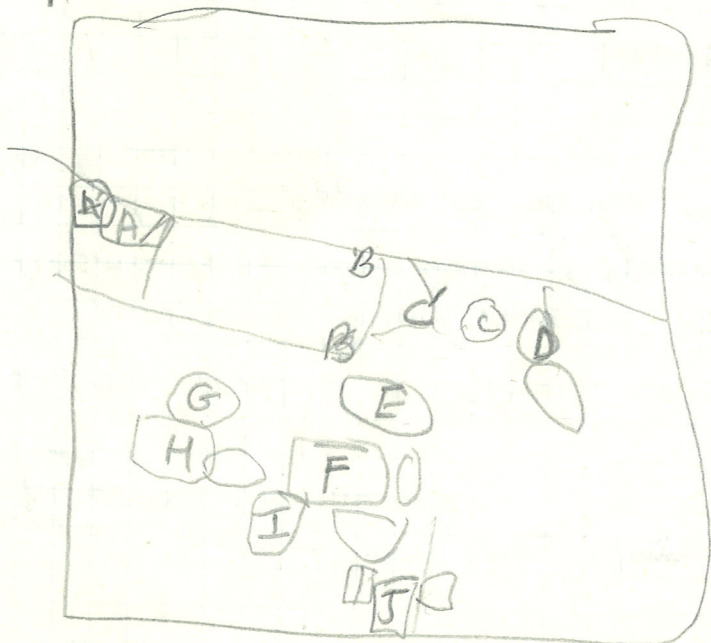
Found what appear to be two molars of  
a horse.

M'-4 level 3 Batt. 1, kommissats -

✓ pyramidol + circular found - area S of  
cesammi natural grey ware  
black slip + wareware, 5' wall



M-4



M'-5

A	445	890	
B	375	750	
C	370	740	
D	356	720	
E	350	700	
F	415	830	
G	468	940	
H	503	1006	
	<u>545</u>	1090	
I		516	1032
J	503		1006

275  
 275  
 50

N'-5

A	463	920
B	347	700
C	320	640
D	250	500
E	190	380
F	265	540
G	290	580
H	350	700
I	370	740
J	298	600
	<u>231</u>	466

M'-5 ... fragment of mixed ...

N<sup>1-5</sup> Level 2  
plate

Found ~~fragment of mosaic~~ fragment of mosaic  
of parallels in Polichoro Mus.



L<sup>1-4</sup> Level 2 NE of wall c - Statuette  
and fragment found



M<sup>1-5</sup> covered up,

N<sup>1-5</sup> Level 2 Found face of statuette, once again  
towards area of NW. corner of square

another head of female statuette  
another head  
+ body. many other small pieces

+ Small <sup>broken</sup> votive pot all found  
in room region - N V 75000 - in  
center or slightly to the west

sat full of tiles + small - medium

↳ 50 especially from N<sup>1-5</sup> - 84 cm  
from N<sup>1-5</sup>,

many statuette frags found.

4 heads.

1 male torso

1 female with arms and

shyph.

all in N<sup>1/2</sup>  
area of the area



~~Back ~~level 2~~ collected from ~~level 2~~ ~~level 2~~~~  
level 2 ~~level 2~~ M<sup>1-4</sup> + L<sup>1-4</sup>

L<sup>1-4</sup> in this - in the yellow - soil from the  
the channel cut - another small bronze  
piece? coin found,

also Piece of green glass found

L<sup>1-4</sup> material level 2 5 of wall L  
collected. This includes no yellow soil from  
the the channel cut later at the  
other end of channel

→ M<sup>1-5</sup> - little material from level 1.

N<sup>1-5</sup> - Have noticed a level of small white  
shellfish; greatest concentration is at  
base of level 1, although there are some  
shells at deeper levels.

Have taken a sample of shells. in case they  
can be tested in anyway.

Could this be the remnants of a flood?

Square ~~at~~ O<sup>1-5</sup> opened, medium  
level 2 ~~soil~~ remained - dark  
soil.

at this level, same type as in W<sup>1-5</sup>

at other end - M<sup>1-5</sup> ~~at~~? (cori)  
opened

~~Back ~~to~~ collected from ~~to~~ boards~~  
Level 2 ~~to~~ M<sup>1-4</sup> + L<sup>1-4</sup>

L<sup>1-4</sup> in this - in the yellow - soil from the  
the channel cut - another small bronze  
piece? Coin found,

✓ also Piece of green glass found

✓ L<sup>1-4</sup> material level 2 5 of wall L  
collected. This includes the yellow soil from  
the the channel cut later at the  
other end of channel

→ M<sup>1-5</sup> - little material from level 1.

✓ N<sup>1-5</sup> - Have noticed a level of small white  
shellfish; greatest concentration is at  
base of level 1, although there are some  
shells at deeper levels.  
Have taken a sample of shells. in case they  
can be tested in anyway.  
Could this be the remnants of a flood?

Square ~~#~~ O<sup>1-5</sup> opened, medium  
level 2 ~~soil~~ <sup>soil</sup> ~~remains~~ - dark  
at this level, as is W<sup>1-5</sup>

✓ at other end - M<sup>1-5</sup> ~~#~~? (cont)  
opened



n.p.s. That level 2-3-4 are all essentially  
the same sort matrix + differ only  
slightly that they lie above or below certain  
features!  
But, level 2 is probably the level  
which includes all of this complex of  
units + levels 3+4 are really  
the same as level 2.

Tuesday. June 14 1977

work continues in

1) O'-5 level 2 continues

~~2) N'-5 level 2 - begun  
M'-P level 1 continues~~

3) M'-5 level 1 This is a deep  
level of dark brown earth.

Pyramidal keramycut found in O'-5 level 2.  
round keramycut in N'-5 level 1

11)  $N^1-4 + N^1-3$  The wedge shaped area bounded on the north by wall A + on the south by the area excavated last year is being crested. Approximately 30cm on the S side of wall A is being tamped. This level - under wall A is called level 3 - under wall A.

This area will be called Triangle 1

(n.b. This triangle extends beyond  $N^1-3$  to the west about

level 3 is hard light brown earth.



in ~~N^1-5~~ level 1 - excavation has started for the trench

in  $N^1-2$  coarseware finds

in  $N^1-5$  excavated yesterday - note that in the bank at c. 70-80 cm from the top of the bank a layer of gravel can be seen. This was the depth at which the Pyonies were found.



June 14.

level 3 -  $\Delta 1$  material - 100mcept to 3  
mixed circles.

Black glaze hops + earware

Tiles that were associated with well A,  
immediately to the south, were found in  
this excavation

0<sup>1</sup>-5 level 2 material - little. not  
excavated very much.

Black glaze lamp fragment. in Triangle 1 level 3.

loanweights also, another in A 1.

Small cut of grey ware in A 1.

level 3 Batt 2 beginning in  $\Delta 1$  from the west.

100 M 2 Tiles in situ in center of  
square, + in NE-100 of rocks with  
tiles

Carbon + soil sample taken in west  
end of  $\Delta 1$  100, 3, Batt 2.

notice in level 2 in W<sup>1</sup>-3 + W<sup>1</sup>-4  
strikes of red soil cut.

M 2 - in level 1 - note bur. form  
orientation  
base

M' 2 - ~~the~~ level 2 begun - under  
tile + stone fall in level 1.

Trayle 1 - Piombo - found in level 3  
Batt. 2,

in this - in the west - very gravelly  
as it has been all the way down.  
in the 2 m from east end to the  
west.

$\Delta$  1 - level 4 begun in east. This is the  
level under the level of the wall found  
previously to the south + of the  
wells; found in Batt. 3  
then in center of 2 squares,

in level 4 - soil is sandy + also wet + claylike  
slightly less gravel.

June 15

work continues in

1) M' 1 - level 2. ~~2~~

2) + in  $\Delta$  1 - level 4.

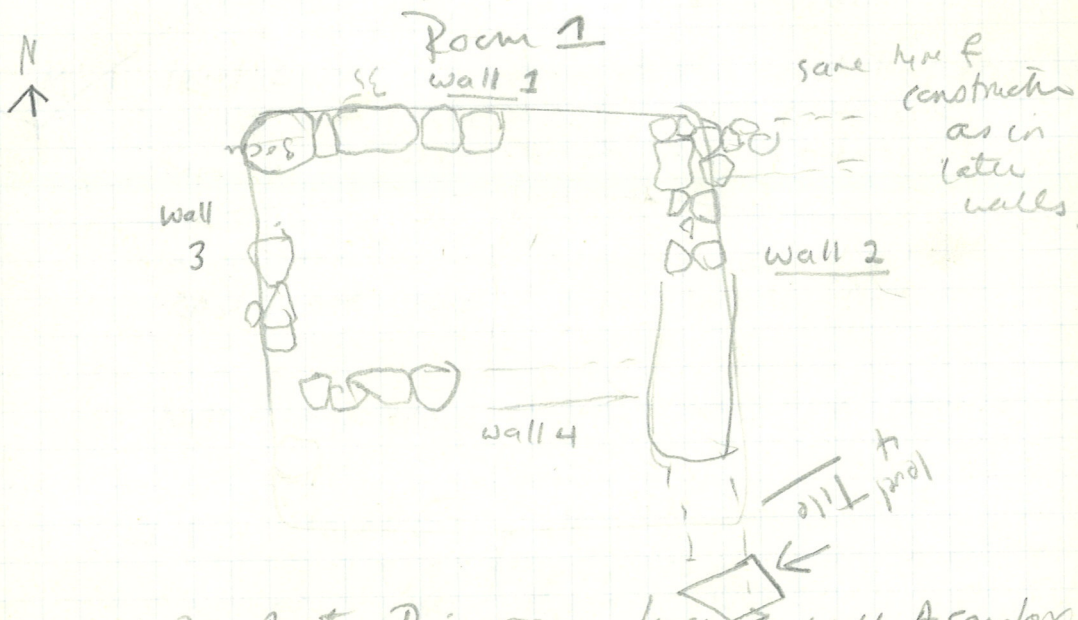
found a raised grayware plate + black plume handle  
to west of room. level 4

gravel layer in  $\Delta$  1 in the west - 11 in  
level, it seems to layer to the west  
discarded previously.



~~note~~ in A1 at small room? Bath?  
 found yesterday in level 3.  
 level 4 is the level under the level of  
 this small room. The rest on either side of  
 the room seems to be similar.  
 Small room to be called room 1.

The walls of ~~this~~ room 1 A1  
 are as follows:



note that this room lies well A complex  
 + oriented differently, seems to be the room 1  
~~the~~ west wall seems to be wall 4 the  
 S E corner is also perhaps continuation of this can  
 also be seen in the bank.

M'1 - level 3 - below layer of rock + tile - perhaps a wall

level 4 NS Δ1 - level 4 Batt 2 started - found in extreme end of Δ1 - cornice of wall 5 found previously found

As we go down - tiles less frequent. Scrawl not found east of room 1. Material scarce in Batt 2 level 4.

M'1 level 3 - excavation of this level has revealed that the rock + tile fall is quite extensive - composed of large chunks of tiles + large rocks.

large smooth fieldstones also found in east ~~end~~ end of Δ1 level 4 Batt. 2.

Note large tile in W ~~at~~ S of room 1.

Δ1 - level 4 material - concrete, black shale fragments, grey wash note (mixed slate fragments)

→ L1-5 opened, level 1.

wall 5 - found in Δ1 - east end, at level 3.