

J. C. CARTER



1976
(#1 of 2)

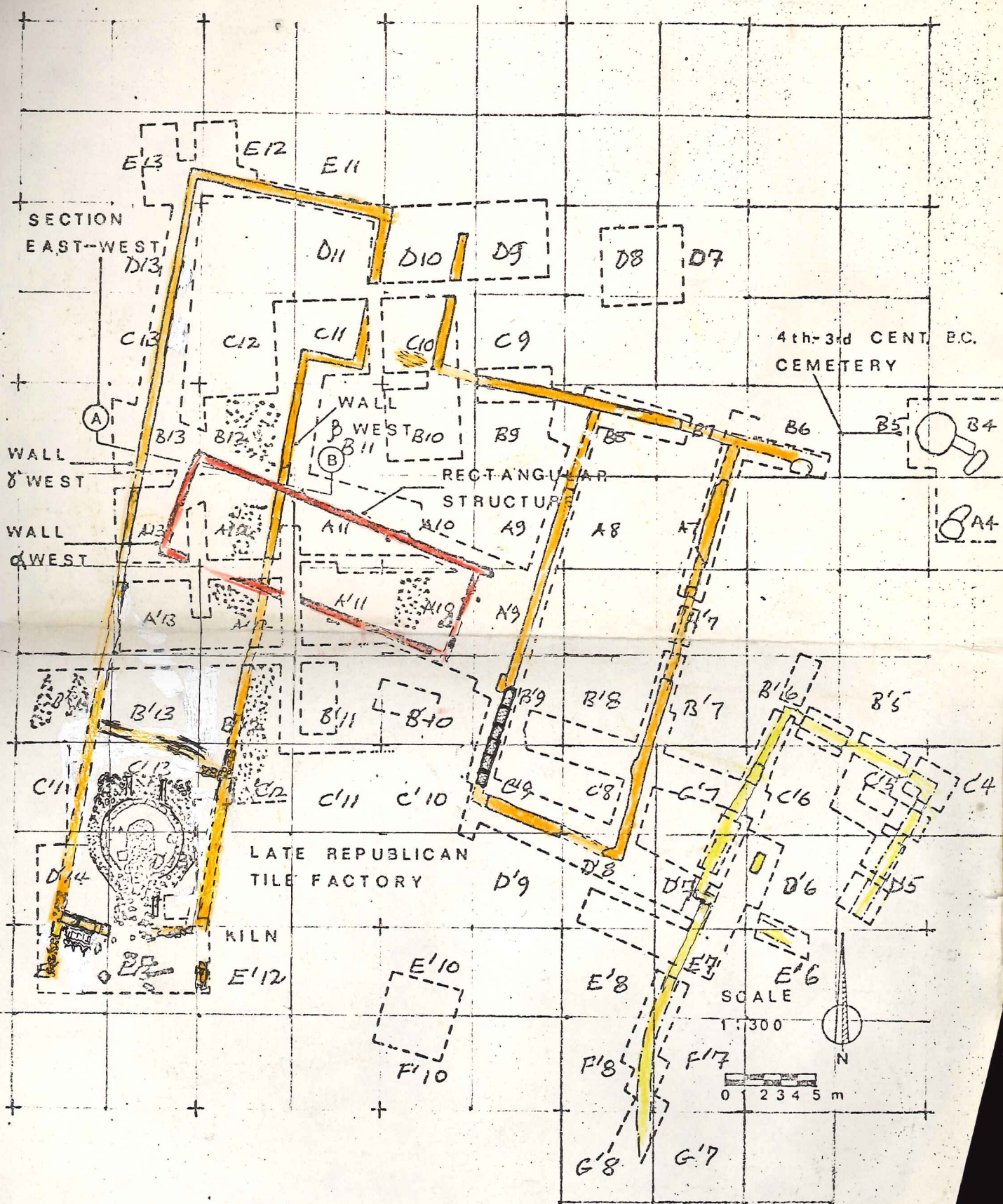
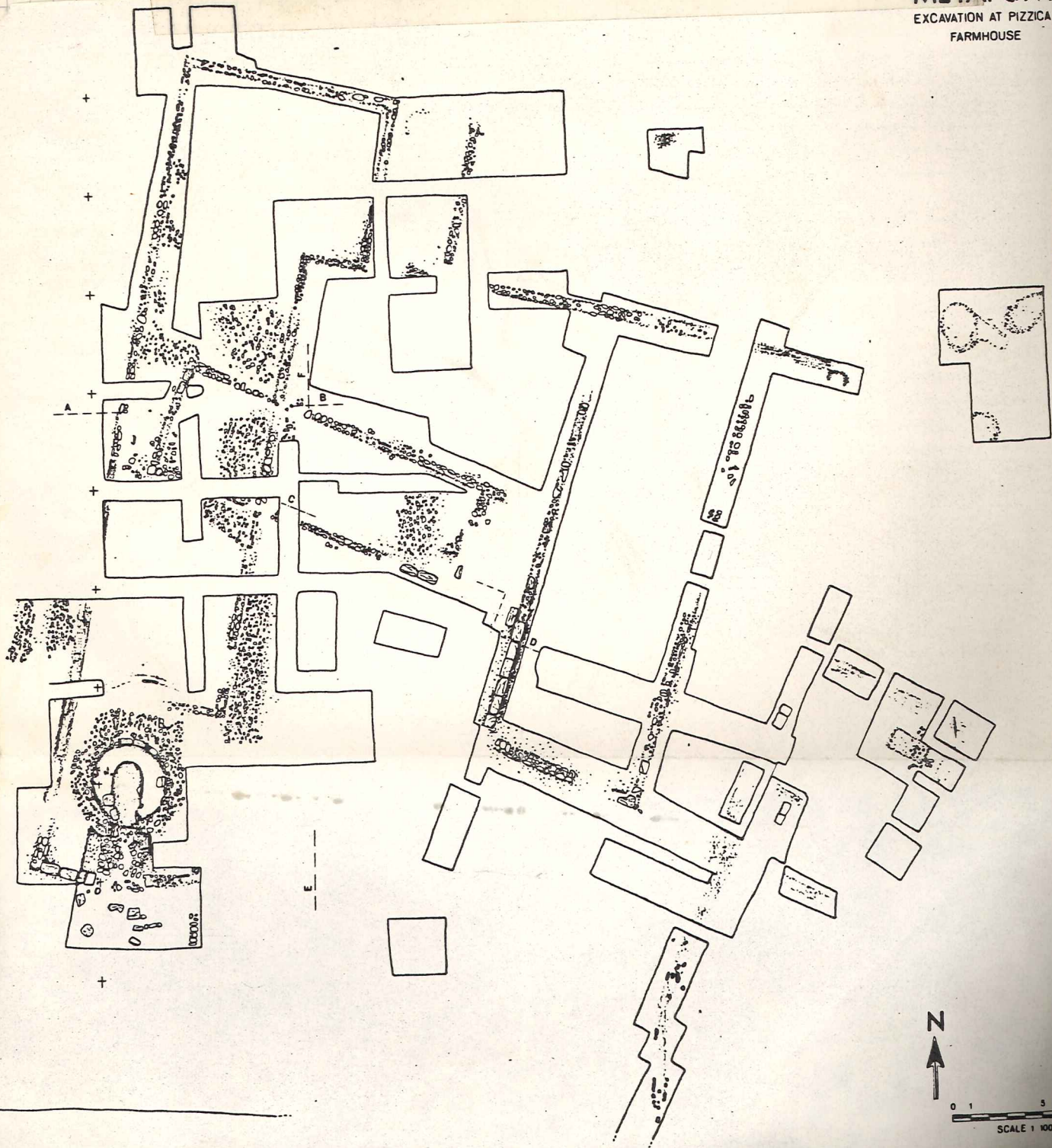


Figure 3 Plan of the hilltop site (Marino-Scavone)

METAPONTO

EXCAVATION AT PIZZICA 1975

FARMHOUSE



Sherd of grey glaze
from hole in raised
platform around ash
pit.

Should help to date
kiln. 1001.

Kilm

June 14

Cleaned profurnia of
rocks and reached
level of burned rocks
Compacted.

Under the arch ^{at the level of} ~~where~~
the "ash pit" appears
a hard burned surface
which is covered or filled
over by the burned rock
work stopped at noon. The
hard surface appears to
belong to early phase of
June 15

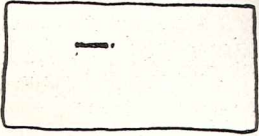
Kilm use

Removed the fill under
left side of profurnia
arch and began excavating
the pit filled with burned
stone. Burned material

found on the hard surface
of the pit. Samples
taken.

Bruno excavates the wall
of the platform around
ash pit. There are
two periods evidently,
the space between the
arch should slope down
toward pit, according
to Santorsola which worked
in ^{fragile} brick film at Bernalda

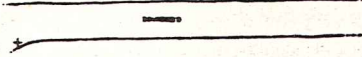
This proves to be the case
the platform is a later
addition. Carelessly make
Bruno pulls out
a piece of tile with mortar?
which he believes is part
of original vault - of
first level



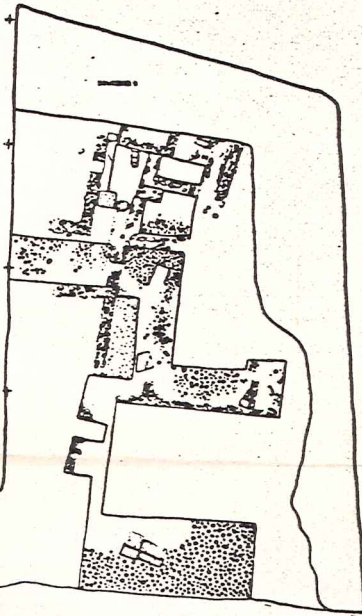
SHED 1



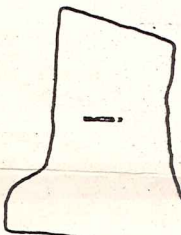
SHED 2



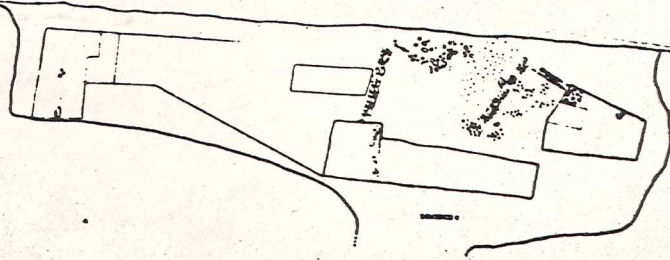
NORTH BASE AREA



SHED 3



SOUTH BASE AREA



P. -2

① 8.93

② 9.65

South Bank S.4

① 9.38

② 9.43

Wall T

① -7.83

② -7.77

③ -7.88

④ -7.99

Wall J

①

② -8.39

Wall S

① 7.77

② 7.85

③ 7.98

Wall Z

① 8.30

② 8.32

Wall O

① 8.34

② 8.34

Wall W

① 8.35

Wall N

NS stone wall

①

② 8.71

③ 8.70

④ 8.90

Field stone wall under NS stone wall

① 9.31

② 8.95

Wall making angle w/ NS stone wall

8.75
end of NS stone wall.

9.23

0'-3

- (1) - 8.71
- (2) - 9.43
- (3) - 8.91
- (4) - 8.68
- (5) - 8.67
- (6) - 9.14
- (7) - 9.15
- (8) - 9.07
- (9) - 9.29
- (10) - 9.07
- (11) - 9.21
- (12) - 9.21
- (13) - 9.37

add 7.45

- (14) 6.37
- (15) 7.99

~~(16)~~
0'-2

- (1) 9.03
- (2) 8.95
- (3) 8.81
- (4)^{bis}

- (4) 8.73
- (5) 8.99
- (6) 9.15
- (7) 9.15
- (8) 9.10
- (9) 9.12

- (10) - 9.09

- (11) - 9.26

- (12) - 9.27

- (13) - 9.31

- (14) - 9.31

- (15) - 9.31

- (16) 8.93

0'-1

- (1) 8.99
- (2) 9.03
- (3) 9.12
- (4) 9.32
- (5) 9.00
- (6) 8.66

Conglomerate block - 8.15

Elevations Canal Area Qb.

June 22

Height of instrument
+70.0

① 0' - 3

from Conglomerate
block in TRF (0 point)

① 1' - 3

Surface
SW Corner

- 1.26

0 point
for sections

② SW bottom
level

- 1.98

③ ^{end} SW of Conglomerate
wall (level 1,
bottom)

- 1.46

④ N end of same → 1.23

- (5) large projecting
conglomerate block - 1.22
on line of NS wall
- (6) W end of field stone
wall (level 2, bottom) - 1.69
- (7) E end of same - 1.70
- (8) field stone pavement, north
(level 3, bottom) - 1.62
- (9) South, same - 1.84
- (10) Fieldstone wall.
Under conglomerate - 1.62
wall. (north)
- (11) Pottery deposit
south of field stone
wall next to it - 1.76
(photographed)

(12) level of pebbles
floor (level 4, bottom)
north -1.76

(13) South, same -1.92

(14) P.4 -1.08

(15) O'-4 -0.54

O'-2

(1) level of pebbles -1.58
pavement, south, east corner

(2) West, same -1.50

(3) level conglomerate
block in east wall
trench, top -1.36

(3) height of blocks.

top of block corresponds
to upper level of gravel
bottom, to lower level
of gravel.

upper level of gravel is
same level as pavement
in 0'-2

(4) level of ~~pebbles~~
gravel pavement
at NE corner. — 1.28

(5) lower level of gravel
at NE corner — 1.54

(6) SE corner — 1.70

difference in level between
the two gravel pavements
in NE, and SE, corners =

(7) EW field stone wall
at east wall of trench -1.70

(8) EW field stone
wall where it intersects
with NS field stone
wall -1.65

(9) EW field stone wall
where North spur
intersects -1.67

(10) NS fieldstone wall,
just north of intersection
with EW -1.64

(11) NS fieldstone wall
just south of EW -1.81

(12) Roof tiles in
south wall of trench
top -1.82

(13) highest level of
pavement in Room
alpha (just south
of EW wall) -1.86

(14) highest level of
pavement in room
gamma -1.86

(15) highest level of
pavement in delta -1.86

(16) P'-2 -1.48

0'-1

(1) Top of NS wall,
north section -1.54

- (2) Base, Southern
sector - 1.58
- (3) Top ^{filarety} Capital
~~height of~~
Capital - 1.67
- (4) height of bottom
of Capital above
stone floor.
(rests on clay)
- (5) field stone pavement - 1.87
- (6) Stone P'-I - 1.55
- (6) Stone O'-I - 1.21

P'-2

① Top of Western
Conglomerate block - 1.48
(belonging to the "Corner"
pair)

- Depth, to bottom -
height above fieldstone
pavement -

② level of pavement - 2.2

South Bank, Canal 5.4

① NW corner, conglomerate
wall - 1.93

② West, like wall - 1.98

Elevations

from conglomerate block
in Trench F., marked
with orange X

height of instrument +.70

Wall TAU

- ① N wall trench. - .38
- ② SE corner - 0.32 ~~2~~
- ③ midpoint - 0.43
- ④ SW end
(corner / rho) - 5.4

R140

- ① Square block in
middle
- ② S end - 9.4

SIGMA

- | | | |
|---|---------------|-------|
| ① | N wall Trench | -0.32 |
| ② | mid point | -0.40 |
| ③ | SE Corner | -0.53 |

ZETA

- | | | |
|---|----------|-------|
| ① | East end | -0.85 |
| ② | West end | -0.87 |

THETA

- | | | |
|---|----------|-------|
| ① | East end | -0.89 |
| ② | West end | -0.89 |

"ZETA W"

(between TAU and ZETA)

① N. end, top -90

② bottom

③ S. end, top

④ bottom

ETA

(between ZETA and THETA)

① N. end, top

② bottom

③ ~~mid point~~, top

④ bottom

"NS Stone Wall"

North extension, North,
just South of large
Conglomerate block (our
zero point)

① Approx same as mid point
of ETA.

② Same, South (just
south of N^o 2 -1.26

S. extension (after
in conglomerate)

③ N end, top -1.25

④ S end, top -1.45

Field stone wall which
angles under "NS Stone Wall"
into ~~our~~ Apwz in EW direction

① at north
end -1.68

② at corner
(highest point) -1.50

Wall which seems to make
an angle with NS stone
wall, south extension,
to the west

West end -1.30

Apparent end of
"NS stone wall in P'-1
where it intersects EW
wall -1.78

Principal line of NS
stakes from A-1
(files)

A'-1 0

B'-1 -4.0

C'-1 -7.2

D'-1 .89

E'-1 -12.3

F'-1 -19.0

H'-1 -3.30

I'-1

J'-1

K'-1 0

-2.74

Conglomerate
stone

-2.11

$$K'-1 = 0$$

$$L'-1 = -.40$$

$$M'-1 = .98$$

$$N'-1 = 1.33$$

$$O'-1 = 2.39$$

$$P'-1 = 2.93$$

from H'-1
+ K'-1 -3.61

height
of
instrument +87

$$\begin{array}{r} 3.61 \\ - 87 \\ \hline 2.74 \end{array}$$

from K'-1
to conglomerate
stone in TR F.
(our zero point)
(X in orange) -3.06

height of
instrument +95

$$\begin{array}{r} 3.06 \\ - 95 \\ \hline 2.11 \end{array}$$

Friday
June 24

San Salvatore.

Owner of land to East

Scrusza, Stefano

owner of plowed field

Murillo, Francesco

town of Bernalda

Bulldozer operator

Giggiani - Giovanni,

Salvatore

Via Vecchio no. 73

Bernalda (Matera)

June 25th

Square N'1.

level 1 -

down to floor of tile and stones which covers only the western half of the trench and appears to extend to N, S, W.

level 1A

tile and rock fall and immediately below material! Break, 4th cent BC.

level 2

Eastern half of trench only, grey clay with some material.

June 28

long NS trench which extends from S. 6 to S5N. It is centered on the W. edge of conglomerate block (north of S5N) discovered by pala on Friday and is 3 m wide. This center line corresponds to N-S, -3 axis. and falls approx in L, K, S

Level 1.

Around conglomerate blocks, at level of tile wall to east and, below a yellow brown, clay with stones, some material.

FIND: B.F. fragment just W N of tile wall.

To south of conglomerate
block, extensive tile and
rock fall. Type of tile
in wall next to conglomerate
block suggests that wall
SIGMA may join up
with this. Level I
is all that is above fall.

To North of conglomerate
block patch of white clay
appears. material all
coarse ware. Level I is
first battuta, here

→ About $3\frac{1}{2}$ ms south of
the north wall of S. 6 a
rubble "wall" running in
E-W. Level I is above
level of "wall" lots of tiles
in small fragments

Level 2.

Below level of rubble
wall. ~~Grey~~ material

N.B. - Grey glazed base
and TS. Arretine

NS Trench widened
by 3 meters -
South Wall
2nd bed bed, 3rd fall
to uncover the western
extension of EW conglomerate
and stone wall -

North extensions of Trench
does not appear to continue
to N5TR.

3rd bed bed takes us
15-20 cms below level
of tiles and stone fall at
the corner of the conglomerate
and stone wall (which also
uses levels of tiles.
The soil is yellowish brown
compact and contains little
material. It is still

Considered level 1.
in view of the fact that
we have not picked
up the wall... Perhaps
3rd bathuta should be
considered 1A as it
is well below the level of
the fall, but too late
now, and material is sparse
North half (division
between 1 and 5 comes
about 1 meter North
of concrete wall -

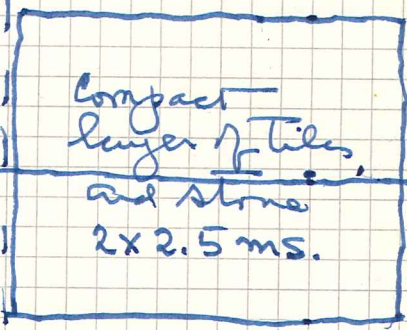
2nd bathuta reveals that
the wall of stone and
tile is really a compact
layer measuring 2 x 2.5 m.
and located in original
3m wide NSTR, but not
in W extension

material from level 1 is
largely coarse ware.
level 2 is taken to be that
below the level of compact
layer and contains large
fragments of grey - glaze and
ware.

Patch of almost white
clay in east side of ^{long} NS8TR
about 2 m south of compact
layer of tile + stone - looks
like virgin. This in level
one.

N wall S 6

to clay
pit from NSTR
approx west.
2.0m



S. wall
S. 6

NS
TR
West.

long
NS
TR.

Scale 2cm = 1 meter

June 30.

NS. TR. and West
level 1 3rd cut cut.

FIND: Just north of line EW
of conglomerate and stone
coals. but w of visible
blocks, TC head. Prox. to line

Material is mostly coarse
but some green material

NS TR - West ext.
North half - level 2

in West ext (3 meters) N
NS trench at same point
where south face of tile
and rock compacted level
found in NSTR. (original 3
meters) is a level of
gravel. no material

level 2 to the the north
of the gravel (which stops
about where the compacted
layer peters out to N.
to much material;

including Arretine, Grey
glaze. lumps of iron &
charred wood. Important
sample tubes.

NS TR (original)

3 meters
North half.

level 2, to south of
compacted level of stones
and brick. - An area
where much fine arretine
appears. Area measuring
approximately $2\frac{1}{2}$ m in EW
direction, and 2 meters
in NS. Soil is grey
brown

at south edge of
Area Alpha (NSTR -
east, north half) a
fragmentary angulosa found
upright in soil. -> fragments
collected, left in place
for photo of level 2.
It is at the north edge
of patch of white clay
- margin(?) noted above

NSTR West ext.
Ball 4.

North end -
level of breccia which
begins about halfway

between conglomerate wall
and and compact layer
of tile and brick. Contains
little material. Seems
to Di Taranto like the
pavement of a road.

Could be part of the same
stratum as the compacted
layer (though tiles are very
scarce.) which was seen
at a lower level in West
~~Side~~^{Ext.} of NSTR.

Set stakes J'-3 is ~~in~~
a steel stake set in well.
NSTR is ~~mainly~~^{mainly} in
J'-2, K'-2, L'-2
but ~~to~~ extends to east

1.5 m into J'-3, K'-3
and L'-3

NSTR level West. -
level 2. North end.
a cut parallel to the
N wall of S.6 and parallel
to it, wide 2 m to south.
Soil is reddish brown
and sandy. Sweeping
reveals a long strip
of burned wood. (Samples
taken earlier) which
lies in a roughly E-W
sense. its W end is ~~to~~ to
North, Dimensions are
roughly 4 m long 20 cm
wide. It appears to

to disappear under the
compacted layer of rock and
tile in NS TR east.

The area of ~~NS TR~~ NS TR,
south of compacted layer
called alpha has gravel
also. The gravel seems to
be associated with Brown
material and to divide
the cut in S.6 from area
to the south.

The traces of the beam
of carbonized wood found
in area Beta ^{go} down
to a level of ^{yellow} clay, which
suggests that it was buried
at the time the clay

pit ceased to be used
as a clay pit -

July 2

N' 1

Rooper trench is level
of clay under tile fall
in west half of Trench

this is level 2. level
1A was tile fall and
immediately below.

material appears to
be 4th cent.

But, just some of
level 2 in ~~the~~ North
east part of square
cleaned up. Soil here
is harder, but essentially
the same gray clay.

Level 2 in N'1 goes from
the level of the tile fall and
immediately below to the
level of the EW conglomerate
wall in SE corner of Trench
and the rock "walls" on
the NE edge.

Level 2 in N'1 - photographed after clean
tiles in NE of area.

Level 2A - at + beneath level of gravel

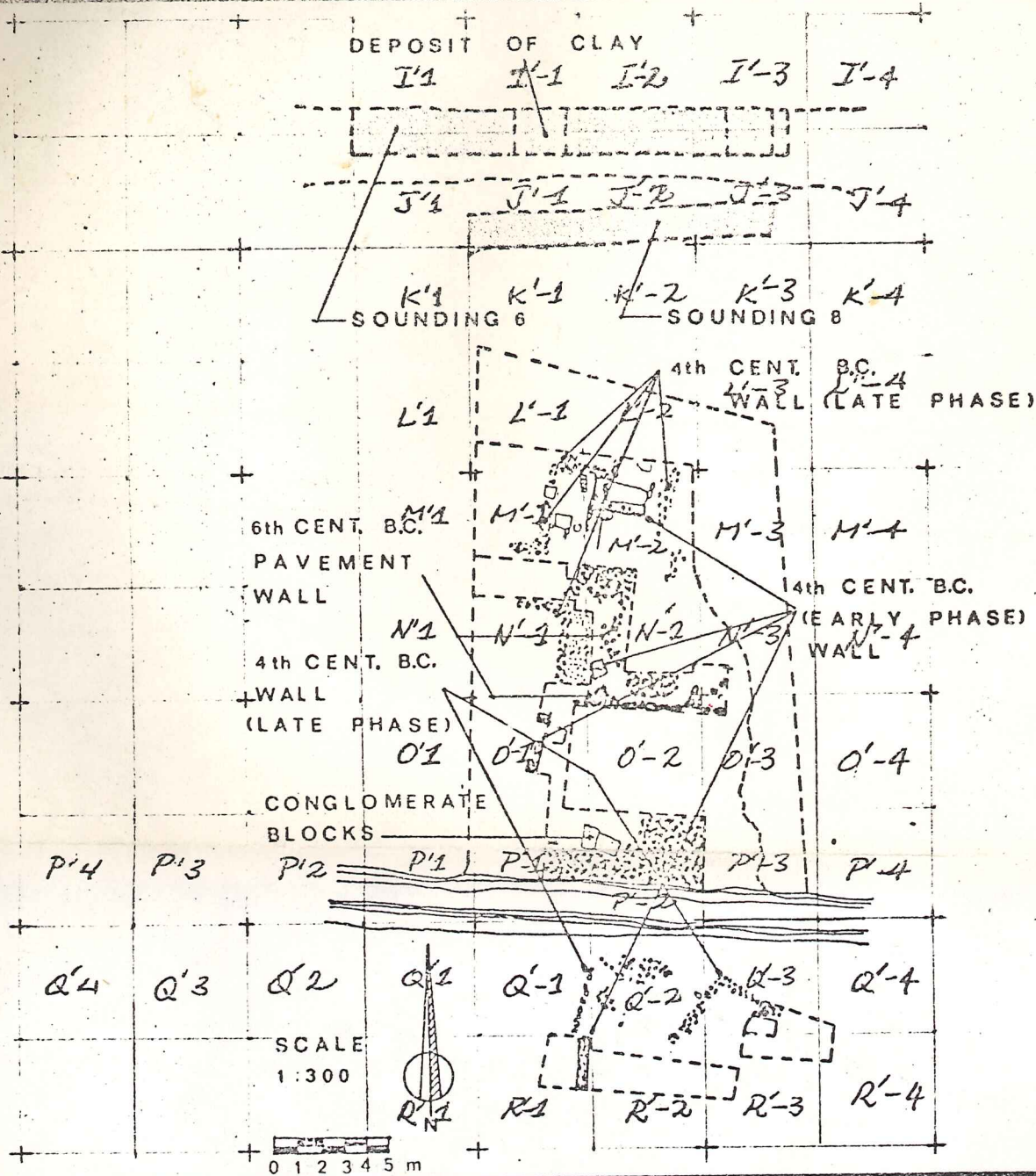


Figure 13 Plan of the canal area, the east sector only (Marino-Scavone)

Apari Brindisi, June 14

Cuomo,

1) Archos Cas. Mo.
film from herri

2) Museum of Tiles
Archaeology 1969

3) Andrén
Blera, NSe 1968

4) Sciarrà
Studi Salentini
Studi Ricerche del
Museo di Brindisi

5) Lissi, Att 7 Convegno

6) Cuomo Saribrium
1973 Classification

Kingston, Velia
All Mom M.B.

3