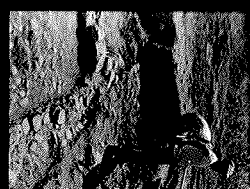
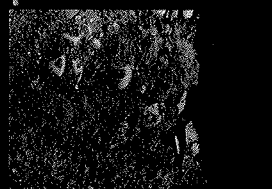
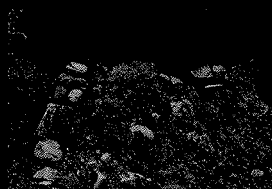
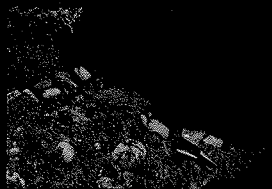


CANAL

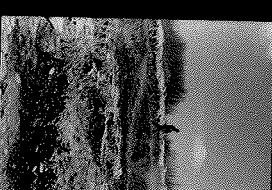
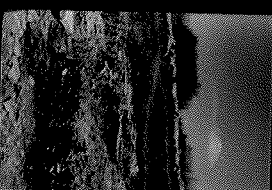
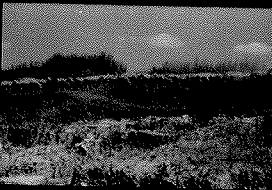
1976



→ 1 M 5063 → 2A KODAK SAFETY FILM 5063 → 3A

→ 4 KODAK SAFETY FILM 5063 → 5

→ 5A → 6 KODAK SAFETY FILM 5063 → 6A

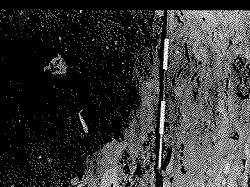


→ 7 SAFETY FILM 5063 → 7A

→ 8 KODAK SAFETY FILM 5063 → 8A

→ 9 KODAK SAFETY FILM 5063 → 9A

→ 10A KODAK SAFETY FILM 5063 → 11A



→ 12

→ 12A KODAK SAFETY FILM 5063 → 13

→ 13A KODAK SAFETY FILM 5063 → 14

→ 14A KODAK SAFETY FILM 5063 → 15

→ 15A KODAK SAFETY FILM 5063 → 16



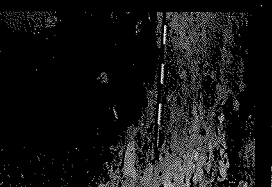
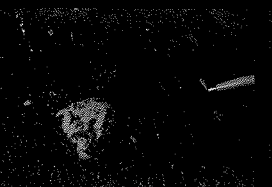
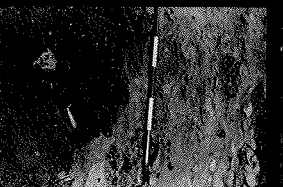
→ 22 KODAK SAFETY FILM 5063 → 22A

→ 23 KODAK SAFETY FILM 5063 → 23A

→ 24 KODAK SAFETY FILM 5063 → 24A

→ 24A KODAK SAFETY FILM 5063 → 25

→ 25A KODAK SAFETY FILM 5063 → 26

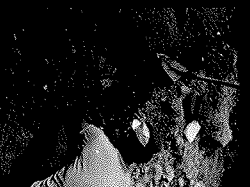
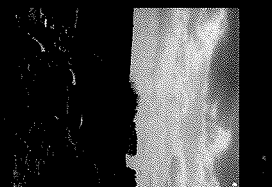
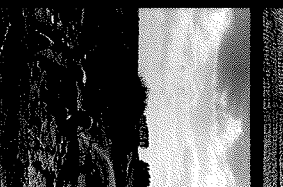


→ 17 FILM 5063 → 17A

→ 18 KODAK SAFETY FILM 5063 → 18A

→ 19 KODAK SAFETY FILM 5063 → 19A

→ 20 KODAK SAFETY FILM 5063 → 21A



→ 27 KODAK SAFETY FILM 5063 → 27A

→ 28 KODAK SAFETY FILM 5063 → 28A

→ 29 KODAK SAFETY FILM 5063 → 29A

→ 30 KODAK SAFETY FILM 5063 → 30A



→ 32A

→ 33 KODAK SAFETY FILM 5063 → 33A

→ 34 KODAK SAFETY FILM 5063 → 34A

→ 35 KODAK SAFETY FILM 5063 → 35A

→ 36 KODAK SAFETY FILM 5063 → 36A



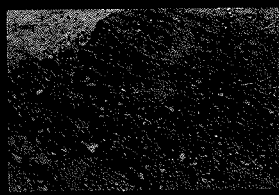
5063

KODAK SAFETY FILM 5063

KODAK SAFETY FILM 5063

KODAK SAFETY FILM 5063

KODAK SAFETY FILM 5063

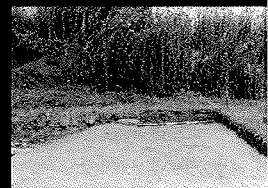
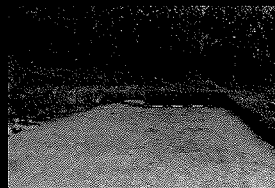
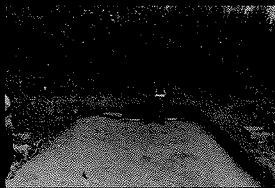
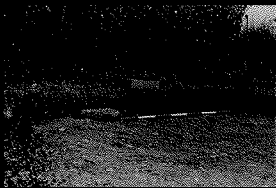


KODAK SAFETY FILM 5063

KODAK SAFETY FILM 5063

KODAK SAFETY FILM 5063

KODAK SAFETY FILM 5063

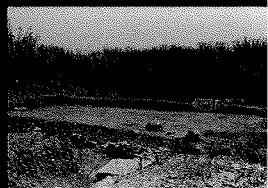
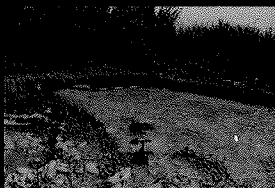
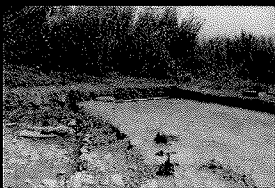


KODAK SAFETY FILM 5063

KODAK SAFETY FILM 5063

KODAK SAFETY FILM 5063

KODAK SAFETY FILM 5063

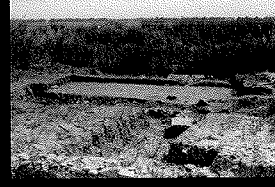


KODAK SAFETY FILM 5063

KODAK SAFETY FILM 5063

KODAK SAFETY FILM 5063

KODAK SAFETY FILM 5063



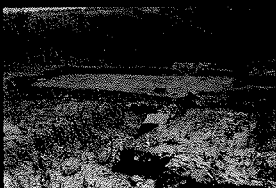
M 5063

KODAK SAFETY FILM 5063

KODAK SAFETY FILM 5063

KODAK SAFETY FILM 5063

KODAK SAFETY FILM 5063

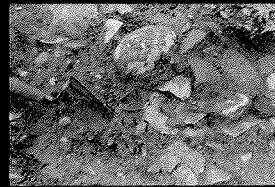
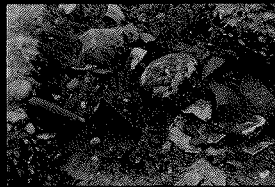
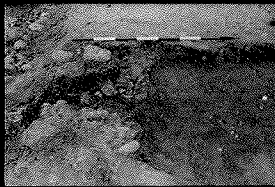
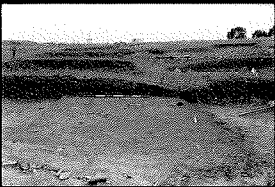


KODAK SAFETY FILM 5063

KODAK SAFETY FILM 5063

KODAK SAFETY FILM 5063

KODAK SAFETY FILM 5063



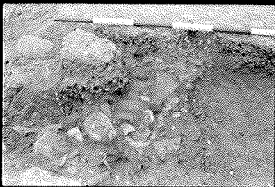
→ 27A

KODAK SAFETY FILM 5063

KODAK SAFETY FILM 5063

KODAK SAFETY FILM 5063

KODAK SAFETY FILM 5063



A → 33

→ 33A

→ 34

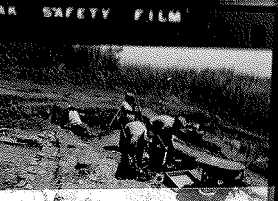
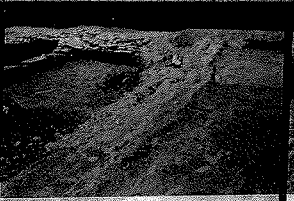
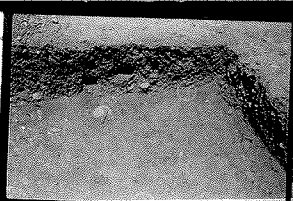
→ 34A

→ 35

→ 35A

→ 36

→ 36A



→ 12

→ 12A

→ 13

→ 13A

→ 14

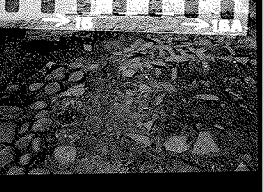
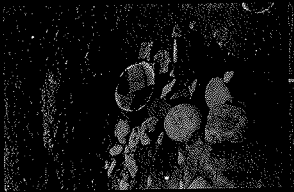
→ 14A

→ 15

→ 15A

→ 16

→ 16A



→ 17

→ 17A

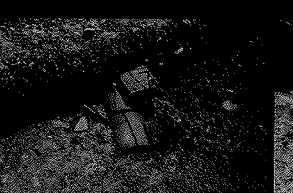
KODAK TRI X PAN FILM → 18

→ 19

→ 19A

→ 20 KODAK SAFETY FILM C B K G

→ 21A



→ 22

→ 22A

KODAK TRI X PAN FILM → 23A

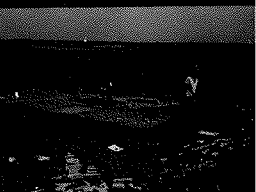
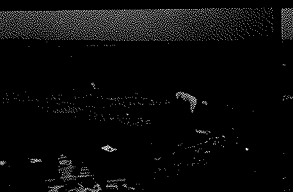
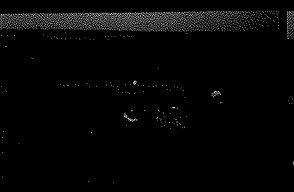
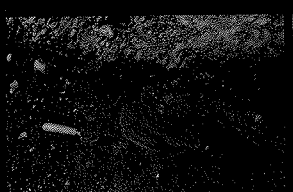
→ 24

→ 24A

KODAK SAFETY FILM → 25A

→ 26

→ 26A



→ 27

→ 27A

→ 28

→ 28A

→ 29A

→ 30

→ 30A

KODAK TRI X PAN FILM



→ 32A

→ 33

→ 33A

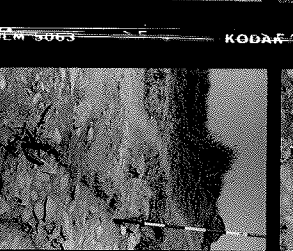
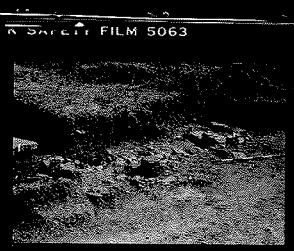
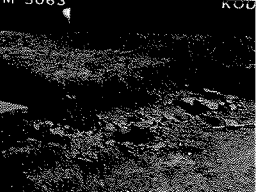
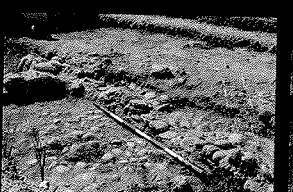
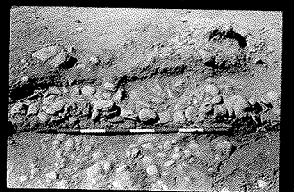
→ 34A

→ 35

→ 35A

→ 36

→ 36A

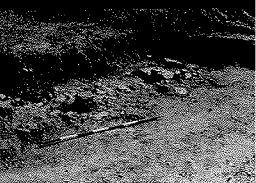
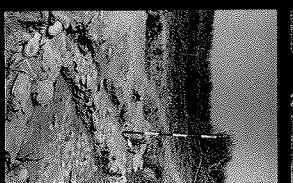
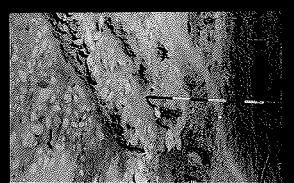
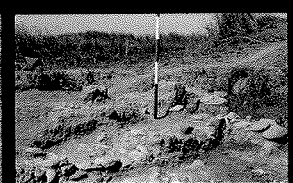
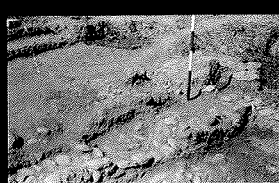


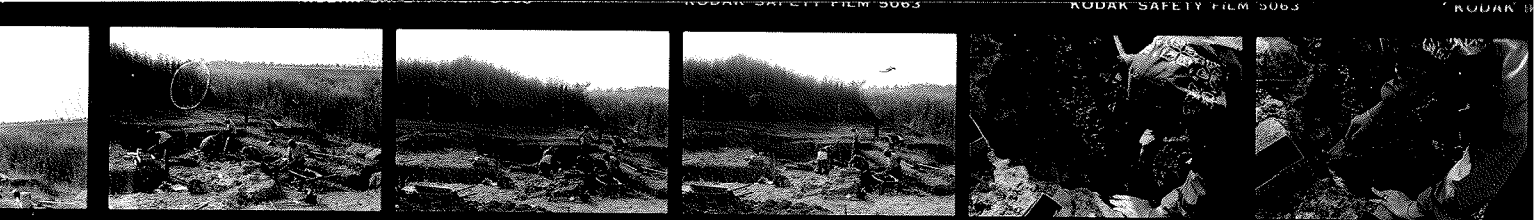
→ 36A KODAK SAFETY FILM 5063

KODAK SAFETY FILM 5063 → 3A

KODAK SAFETY FILM 5063 → 3A

KODAK SAFETY FILM 5063 → 3A





→ 2 SAFETY FILM 5063

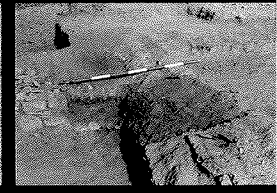
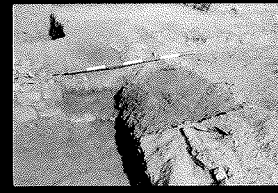
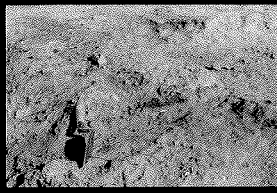
→ 3 KODAK SAFETY FILM 5063

→ 3A KODAK SAFETY FILM 5063

→ 4 KODAK SAFETY FILM 5063

→ 4A KODAK SAFETY FILM 5063

→ 6A



→ 7A

KODAK SAFETY FILM 5063

→ 8A

KODAK SAFETY FILM 5063

→ 9

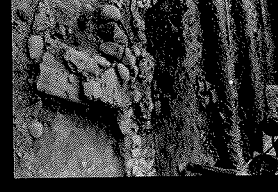
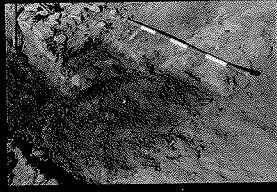
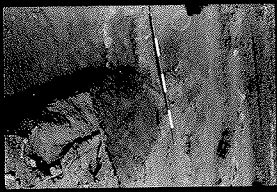
→ 9A

KODAK SAFETY FILM 5063

→ 10

→ 10A

KODAK SAFETY FILM 5063



→ 13A KODAK SAFETY FILM 5063

→ 15 KODAK SAFETY FILM 5063

→ 16 KODAK SAFETY FILM 5063

→ 16A

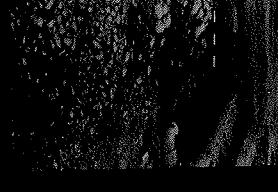
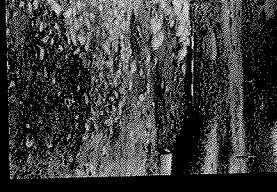
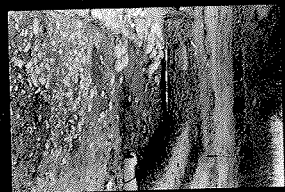


→ 17 KODAK SAFETY FILM 5063

→ 18 KODAK SAFETY FILM 5063

→ 19 KODAK SAFETY FILM 5063

→ 20A 1 6 6

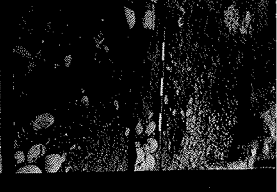
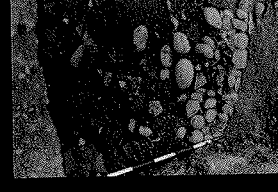
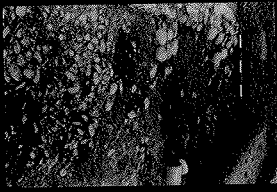
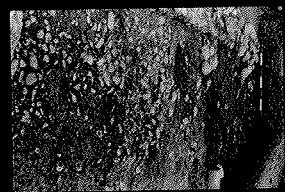


→ 21A SAFETY FILM 5063

→ 22 KODAK SAFETY FILM 5063

→ 25 KODAK SAFETY FILM 5063

→ 20A KODAK SAFETY FILM 5063



→ 27 KODAK SAFETY FILM 5063

→ 28

→ 28A KODAK SAFETY FILM 5063

→ 29

→ 29A

→ 30 KODAK SAFETY FILM 5063

→ 30A

→ 31



→ 32A

→ 33

→ 33A

→ 34

→ 34A

→ 35

→ 35A

→ 36

→ 36A



June, 1976

1

We began excavating the southern area of the site (canal zone) today in square O'-2 (named by the NW stake). A wall line is associated with this square, although it is below the present working surface. The wall line was uncovered during the 1975 season. Pottery was in abundance in level one, 76.5 P coarse ware and shards with black glaze. Roof tile fragments were noted, although they occurred infrequently.

A gravel level was noted while excavating. This was <sup>above it</sup> associated designated 1A; assuming the fill of level one was associated with this level. A stone block protrudes from the East wall of the square, and is imbedded in the "pavement." Levels of the floor have been taken and dimensions of the stone block noted. A level Report has the square and the features associated within it sketched in to scale. (Level Report O'-2, Level 1 and Level Report O'-2, 1-A)

The gravel floor was removed except for a line running along the Southern perimeter of the square projecting into it  $\frac{1}{2}$  meter. This was left to give an idea in cross-section of the construction of the floor.

A large base (painted - black glaze) was found directly beneath the floor; 76.97 3,  
it was classified as a fund. This sherd, being in association with the  
floor, may be an aid in dating the floor. It should be noted that the  
SE stake, P'-3, is our arbitrary datum (DT elevation). All elevations and notes  
will be relative to this stake unless otherwise noted.

At the edge of the curbed square to the north, above the wall line blow  
is a tile fall. This is interesting for a number of reasons - it is  
directly below the pavement surface; it is approximately on top of the  
lower wall line (a little SE of the wall, hence inside the structure);  
and some of the tiles appear to be archaic (yellowish clay). Black  
glazed pottery is associated with this group. These artifacts  
may aid in dating the structure. The black-glazed pottery  
was collected and bagged separately.

June 3  
We continued excavation in square O'-2, removing the southern part of the square. A fieldstone wall, runge. E.W below the present working surface. Two cross walls, running c. N.S, intersect the longitudinal wall at right angles. This area was excavated in 1975; the wall extends under the bank we are currently removing. I have designated this wall as FS1 (fieldstone wall one).

The "pavement" (I) noted at the bottom of level 1 was removed, leaving a block bank 1/2 meter wide along the southern face of the square. Some interesting features were noted. A concentration of pottery and tiles was found in the northern area of the square. Black glazed cups <sup>(fragments)</sup> were collected separately. A small pedestal containing a conglomerate block fragment was left remaining immediately NW of this concentration. Conware and tiles were noted in this concentration also.

A large black <sup>course ware</sup> ~~glaze~~ pot base was found directly below the pavement surface in the SW sector of the square. This was collected as a Find, and mapped in on the level report. Two large fieldstones were noted in the south-central area of the square; a complete tegular lie directly west of this.

[Consult level report 1A for a scale-drawing] ~~Level one~~ Level one - A  
extends c. 30 cm below surface. (Stake 213 is the permanent 0 elevation for the southern sector of the site) A 1/2 meter bank was left along the southern wall of the square at the level of the pavement. The tiles found in this square vary in color, a yellow-green fabric was noted, possibly indicating archaic tiles. A skid (ceramic) containing numerous punctations was found in the east-central portion of the square. A large conglomerate block projects into the square from the ~~south~~ eastern face. The block is imbedded in this pavement, indicating association with this occupation level. 76.16P

76.18P

76.19T

Level two was somewhat different in soil type and artifact material. The soil was Munsell color 2.5Y 4/2 - dark grayish brown, with streaks of rust color, probably from seepage. The soil is very clayey.

This level begins immediately below the gravel pavement (1A) and is 2 horizons - a gravel fill and a clayey soil fill. Artifacts were found directly above and below the gravel lens but not in it; the clay horizon was rich in artifact material. 76.20P

Black-glaze pottery, coarse ware and tiles were noted. The majority of 2 pots were collected - one concentration near the east wall; the other approximately in the west-central area of the square. These concentrations were found on the floor of Level 2. Roof tiles were scattered sporadically throughout.

Fieldstones appeared in the eastern sector of the square, continuing under the wall of the adjoining square O'-3. These stones may be associated with FS1, but they are not on line with FS2, and are higher. This wall line is designated FS2 until its association with the rest of the architectural features (FS1 and cross walls) can be discerned.

2 Saenian cover tiles were exposed in the faces of the northern wall. These are red clay, and rather broken, are in almost complete form. These will be left in situ to see if they can aid in determining the relationship of levels. Other pottery clusters - black-glaze sherds south of FS1, approx. central in the square, tiles near the east face of O'-2, South of FS2 (in the same concentration as the first ceramic cluster described above). These concentrations were collected separately to aid in reconstruction in the lab.

9. 1) 76.24P  
2) 76.25P

76.26P  
76.38P  
76.39P  
76.40P  
76.41P  
76.42P  
76.43P  
76.45P  
76.46P

76.28P  
76.27P  
76.29P  
76.28P  
76.36P (FS 2)



June 4

11

Level 3 was begun, and extended west into square 0'-1' about 3 meters. A floor was formed at the bottom of Level 3 - a floor made of river gravel. Artifacts occur on top of the floor. The removal of level three shows clearly the relationship of walls, crosswalls, etc. FS1 and FS2 are the same wall, the stones falling outward when the structure collapsed. A cross wall was found south of the fieldstone wall (now called FS1). This divides the structure into 24

rooms - the SW room is designated alpha, SE Beta, NW gamma, -BETA NE Delta. Pottery was found in large numbers. Clusters of pottery occurred and were collected separately when possible, but the amount at times prohibited separation into separate units. Coarse ware predominates, but black glaze (cups?) are abundant also. Roofing tiles occur in small fragments, and are pale yellow to light orange mainly. The fabric and color seem to indicate archaic tiles; this will have to be verified.

It is possible that level 2 and level 3 are all one occupation level; they seem to grade into each other stratigraphically and content-wise. However, this is not verified.

76.56 P  
76.54 T  
76.58 P  
76.59 P  
76.60 P  
76.61 P

A large amount of charcoal occurs at the bottom of Level 2 and continues into Level 3 (9'-3") (greater amounts in level 3). It is confined to room Beta, and was noted just along the crosswall, altho it extends into the center of the room, south and east. However, neither the pottery nor wall-stones appear burned.

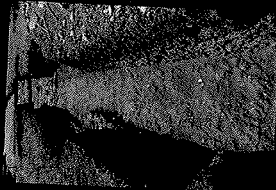
The floor pavement is confined to the western rooms; beta and ~~delta~~<sup>gamma</sup> do not have pavement. This could be due to washing or settling of the pavement in these rooms; or possibly the junction of the room didn't demand a pavement and hence merely had a dirt floor. (Artifacts are bagged separately from each room - functional usage may be determined from context.)

The cross wall (crossing FS1) extends south c. 60 cm, and does not continue in this excavation unit. FS1 extends E into the eastern wall of the square 0'-2. In this eastern face a terracotta figurine was found. It was boxed separately. Pedestals from levels 1A and 2 were removed also, clearing the entire unit 0'-2 and the western portion of 0'-1 to level 3.

It should be noted that the pavement of level 3 may pass under FS1. We don't have the entire structure exposed,

14  
only one longitudinal wall (FS 1) and 2  
cross walls. The pavement had pottery above  
it; pottery extends down into next level in  
room below. However, it is so wet (due  
to seepage) that excavation below this  
level (31', this year will be impossible

In 0'-7' in N. W. corner, is a soft stone  
architectural block peering out of the masonry  
course. This may confirm this structure  
as sanctuary or may tie in with one  
of the wall lines. Removal of all 0'-1  
down to level 3 will shed more light  
on this.



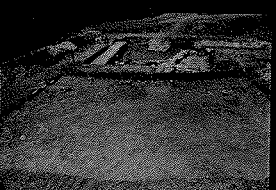
→ 0A

→ 1

→ 2

→ 3

→ 3A

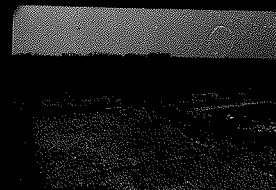


→ 4

→ 4A

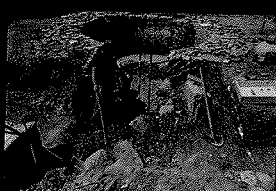
→ 5

→ 5A



→ 6

→ 6A



→ 7

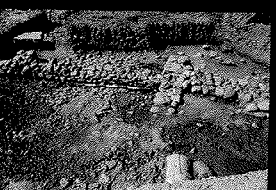
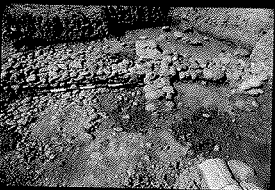
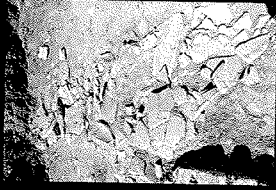
→ 7A



→ 20

→ 20A

0 7 2



→ 30

→ 30A

→ 31

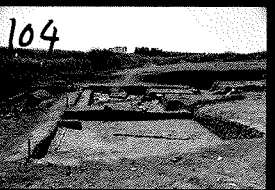
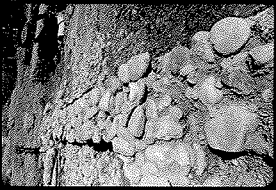
→ 31A

→ 32

→ 32A

→ 33

→ 33A



104

KODAK TRI X PAN FILM

KODAK SAFETY FILM



→2A

→3A

→4

→4A

→5A

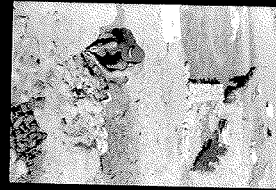
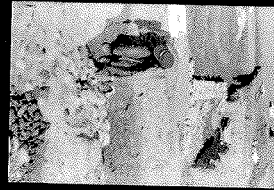
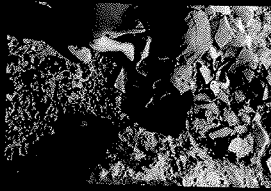
→6

→6A

→7

KODAK TRI X PAN FILM

KODAK SAFETY FILM



→7A

→8

→8A

→9

→9A

→10

→10A

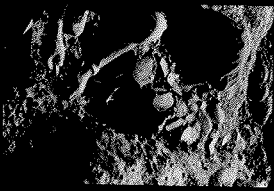
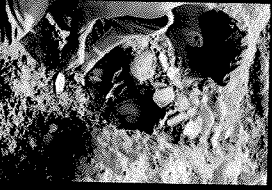
→11

→11A

→12

KODAK TRI X PAN FILM

KODAK SAFETY FILM



→12A

→13

→13A

→14

→14A

→15

→15A

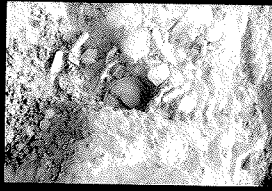
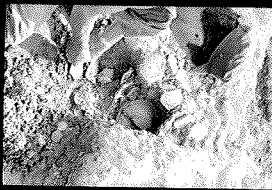
→16

→16A

→17

KODAK TRI X PAN FILM

KODAK SAFETY FILM



→17A

→18

→18A

→19

→19A

→20

→20A

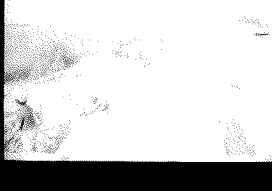
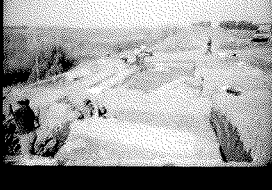
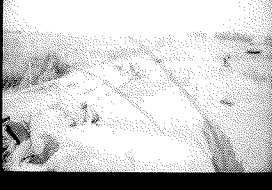
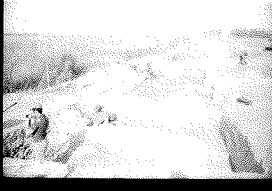
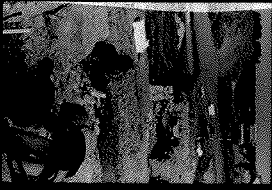
C B K G

→21A

→22

KODAK TRI X PAN FILM

KODAK SAFETY FILM



→23A

→24

→24A

→25

→25A

→26

→26A

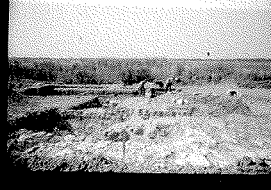
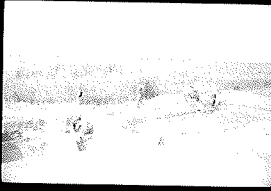
→27

→27A

→28

KODAK TRI X PAN FILM

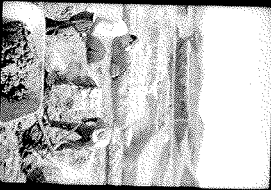
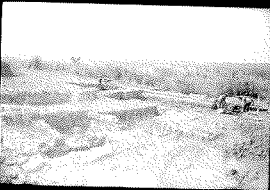
KODAK SAFETY FILM



KODAK TRI X PAN FILM

KODAK SAFETY FILM

KODAK SAFETY FILM



→34A

→35

→35A

→36

→36A

→37

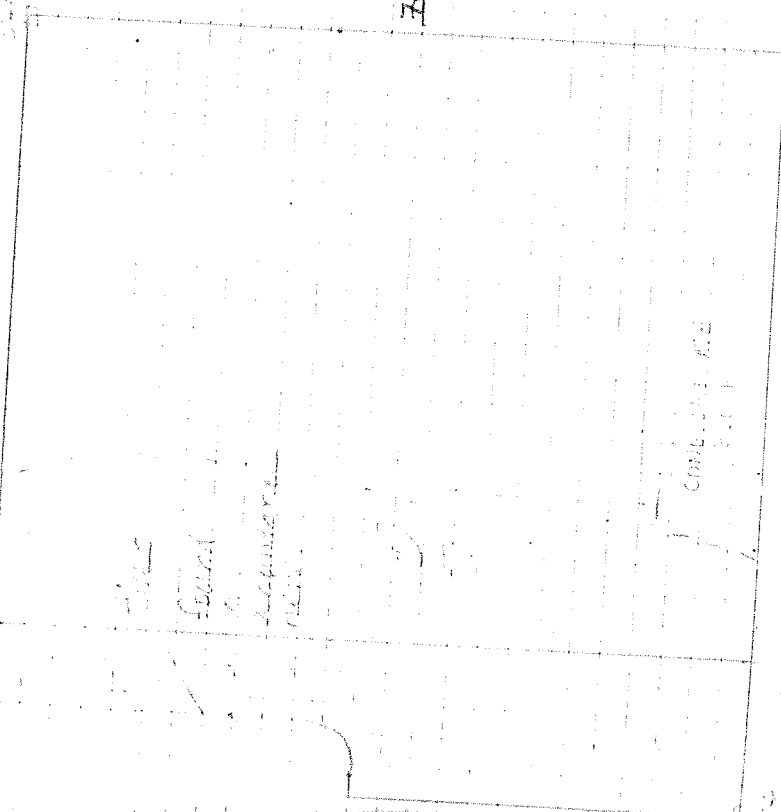
→37A

→38

→38A

→39

June 10



Began working in 0'-3 in the canal zone this morning. We left a 1m. bank between 0'-2 and 0'-3 which will be removed later. We took out level one, hoping to come to the pavement of level 1A found in 0'-2. However, we haven't reached it yet.

Level one was predominantly slope wash. 76.11 Root tile fragments, coarse ware and black - 76.11 glaze pottery were found. A number of 76.11 Frits were recovered: A bronze bar, 6cm by 9mm, a circular lead weights of clay; 76.11 a statuette head; a shield with paint; 76.11 Some grey glazed pottery was 12.11 found. The fragments seem to have 12.11 consisted of flat (Corinthian) pan tiles and curved (Laconian) cover tiles - both types were noted. The fabric is a mixture of red and yellow clays. The yellow tiles having a pinkish surface.

A large conglomerate block was found in the southern wall of the square, 14-tending NE into the square. This block may be associated with the one protruding from the eastern face of square 0'-2. They both are conglomerate blocks, probably not of 0'-2. However, the block associated with level 1A, the block contains roofing tiles and did not seem to be associated with our face.

associated with the fieldstone wall of level 3. An area along the western edge of the square has been photographed but did not seem to indicate that it represented an occupational surface.

An interesting tile fragment(?) was found, bearing an egg and dart pattern. It is doubted if this is a side fragment. This may be part of a sima or associated with interfixes.

76.12 sign on side with interfixes.



Large blocks appeared in the floor of Batulla 2 near the northern wall of the square. This may be the top of a wall line. Tomorrow

19.

June 10 (cont)

We finished Batulla 2 of 0-3 and began Batulla 3. All material is being combined in the lab, but is being excavated as 3 separate parts. No elevations have been taken yet.

June 11

A statuettes fragment (head) was found in the NE area of the square. In Batulla 2, Black glaze pottery, coarse ware are abundant to few as 1397 are roofing tiles. Again curved and flat tiles were noted. The colors vary - a deep yellow friable; a paler yellow of harder consistency; reds from deep to orangish were noted. Most pieces were very small, as if cracked from burning. No charcoal has been noted. However, a dark area immediately east of the conglomerate block in the south wall had a burned look to it. It is possible this area burned, but this hypothesis has not been verified.

The wall line noticed yesterday was exposed more today. It is on axis with the conglomerate block at the south wall but doesn't completely attach to it - stones are missing or at least, have not yet been exposed.

June 21

Note - Previous weeks work was predominantly excavating tombs at San Salvatore. June 21 is the first day I back in the canal area.

We are again in 0-3. Work ended with Level 2 begins today, and extends from the top of the wall line down. Elevations were taken but have not yet been field in. The material collected from the area west of the NS wall (called NS conglomerate wall) was kept separate W 76.172 from the eastern side of the wall. We hope to be able to determine functional usage of the rooms by this procedure. West of the wall the tool is Mundell 2.59 4/2, the east 10 YR 3/1.

E - 76.173

76.174

W 76.172

The NS conglomerate wall line does not connect with the southern conglomerate block, at the axis with it. However, tiles and field stones are found in between (S of the NS wall), and indicate an EW

June 21

21

wall, possibly an extension of F51 found in 0'-2.

Breccia was noted along the western edge of the NS conglomerate wall extending out (west) c. 50 cm. Sandy clay appears west of this. Artifacts noted in the western area - black-glaze slips, coarseware pottery, roofing tiles. Black glaze seems to be a fine ware probably Attic, and all were poorly constructed ware - possibly locally manufactured.

Some charcoal occurs in the western area, especially to the south near the cross-wall. L. 3  
E-76.135  
76.190

Note - The tiles and stones are slightly higher than the wall (EW wall).

The wall line signifies 2 things - the division of this area into 4 collection areas, and the beginning of Level 3. The cross-wall transects the square into 4 unequal-sized rooms. 200.  
NW-76.177  
76.177  
76.194P  
199P

The SW room contained much pottery - black glaze and coarseware again. A large vase fragment was collected separately. The soil was very wet (due to seepage from the canal and very clayey). 76.176P  
196P  
#87P

The NE room was of similar soil. Artifacts collected were - the base of an archaic figurine, part of a large plate, a cut-stone brick. 76.198T

Immediately N of the EW crosswall (F51) is the remnant of a parallel wall line. It is c. 50 cm long and at approximately the same elevation as the complete crosswall. NW  
76.192P  
191P

Pottery was collected immediately south of the EW cross wall, between the conglomerate block and the EW crosswall. 76.193

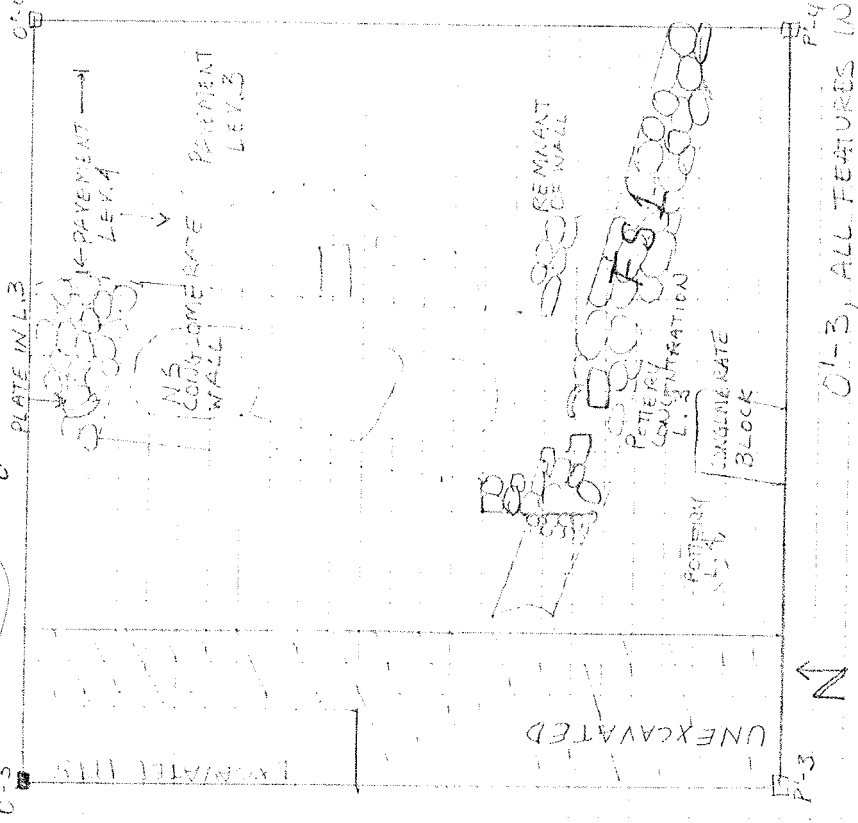
In the NE room a floor of gravel was noted. This marks the bottom of level 3. Charcoal was noted and collected from the fill on top of this floor and also from directly on the floor. The pavement (slab) cover the entire square; just on the NE corner. Pottery fragments were collected from the bottom of level 3. These lots were collected separately. 76.179SS  
76.180P  
76.181P  
76.184P  
76.186P

A large plate was collected from immediately N of the NS conglomerate



well, as a find. The plate was at about the level of the pavement 1927  
 of L. 3; in fact imbedded in it - as it isn't classified as either 1917  
 U. 3 or L. 4. JUNE 22

LEVEL 4



L. 4 begins in the west part of the square at the level immediately beneath the pottery concentrations (-56 cm. below level of P. 103, the 0 stake). In the east, it begins immediately below the pavement floor. Artifacts were collected from the floor of L. 3 separately. S.W. ROOM 76.187 F 76.185 F

L. 4 ends at -67 cm below surface (P. 1-3) in the SW and SE. It is marked by another pavement of smaller stones at the SE. No pavement has been noted in the western area. AE 76.182

Artifacts appear on the floor of L. 4 and also were collected separately. They are mainly small vulture feet and cup bases, but other types occur also. (67 cent)

Charcoal was collected from the pavement of L. 4.

Part of the western area was taken down another battista (L. 5) to determine if another FS was on floor or living surface existed. Artifact material was scant, indicating that L. 3 and L. 4 were the actual living surfaces.

L. 1-3, ALL FEATURES INCLUDED

1M

4 Finds: Left breast of FS wall (in L. 3, below level by

23 JUNE

25

Working in both N'-1 and P'-1 today N'-1 was partially excavated in 1975, exposing a NS Fieldstone wall. Level 2 was removed completely, to siding entire square to level 2 (even with wall line.) Not much material recovered. Soil was dark, gravelly, plow zone churned material. AN EW wall of large blocks was uncovered, intersecting the NS wall. Level 2 begins at 22:10 the level of the EW wall line.

76:22755  
76:22655

24 JUNE

Level 2 in N'-1 begins at the top of the EW wall line. A possible wall line appears North of this wall, also running EW. Both intersect the NS wall. The NS wall extends into O'-1 and seems to continue (in intervals) into P'-1. Level 2 goes down to the bottom of the large architectural block at the NEON corner of O'-1. This block sits almost on the pebble pavement seen in O'-1.

Level 3 begins at the bottom of the architectural block in O'-1 and extends down to the pavement.

June 22

O'-3 in NE corner at level of stone pavement  
FIND small white vase

South of E-W stone wall and east of NS Englemere wall at this level of the wall, the left side of a hatched figure of the early type.  
FINR left breast of early type white figurine about 7 E-W field stone wall it, level 3 and east of NS Englemere wall. That is below the level of the field stone wall.

0'-3 June 22

N.B. Large deposit of pottery removed from south  
of EW field stone wall cut west of conglomerate  
wall. Includes 36 cups and angular plate into  
baggies separately. 27

N.B. Reprints full pottery south of EW field stone wall and  
under tile full point where NS conglomerate wall  
passes over field stone wall.

0'-3 FIND Attr. (?) to north of EW field stone wall and  
west of wall, below level of field  
stone wall.

0'-3 NB Considerable amounts of charred wood  
sample taken Box 0'-2, <sup>76. 20755</sup> 0'-3 here lots of

Level 4 -

The next tuffite begins at the level of the bottom  
of the deposit of pottery found next to the EW stone  
wall. The deposit is ca. 10-20 cm thick.

Level 3 and level 4 may overlap as the slope of the  
ground is uneven, rising toward the wall. Another  
deposit begins in SW corner of 0'-3

0'-1 level 2 (second large tuffite)  
in grey clay will be below level of NS wall (Note the  
large plate found yesterday was on a level with the  
top of this wall)

FIND Fragment of a shell

0'-1 - NB, large deposit of pottery removed from A II  
(over)

of EW wall (of field stone) and west of NS  
 conglomerate. Note includes ~~big~~ cup small  
 unglazed plate with handle. Bagged separately  
 (N.B. Deposit of pottery south of EW field  
 Stoneville and smaller tile full flat. ~~Probably~~  
 NS conglomerate wall passes over field stone wall.

June 25 Square N'1  
 Level 1 - see p. 47

Jack B. Irion

6/24/74

29.

Excavation was begun at level 1 of square 0'-1. In the first level a heavy terra cotta plate was unearthed which was approx. 40 cm in dia. near the center of the square. (SEE GENERAL REPORT FORM FOR THIS SQUARE) LEVEL CHARACTERISED BY HEAVY COARSE WARE.

6/24/74 SQUARE P'-1, LEVEL 3

PAVEMENT AT THIS LEVEL IN 0'-1 DOES NOT CONTINUE INTO THIS SQUARE ON THE WEST SIDE OF THE DRAINAGE CANAL IS AN AREA DEFINED BY 2 N-S WALLS AND 1 E-W WALL. ONE ~~OF THIS WALL~~ <sup>N-S WALL</sup> ~~SEAL~~ <sup>SEAL</sup> EXTENDS FROM 0'-1 TO P'-1 ON THE WEST SIDE OF THIS WALL SCARCE AMOUNTS OF COARSE WARE WERE FOUND, ON THE EAST SIDE FINEER BLACK GLAZED WARE, INCLUDING A CUP WERE FOUND.

7/1/74 NORTH-SOUTH TRENCH, west extension, south side (L'-2)  
FIFTH BATUTA, LEVEL 2 (LEVEL 2 DESIGNATED FROM S-1 & 6th BATUTA)

SOIL IS LIGHT GRAY OR S. 1/2 IN THIS LEVEL AS OPPOSED TO TD YELLOW CLAY IN THE UPPER STRATA. THE PURPOSE OF THIS TRENCH IS A SOUNDING IN DEPTH TO PICK UP WALLS FOUND IN 1975 AND

DETERMINE ASSOCIATION TO CONGLOMERATE IN NORTH SIDE.

MATERIAL: FOURTH CENTURY POTTERY, FRAGMENTS OF HEAVY STORAGE AND COOKING WARE.

FINDS - 1 RED FIGURE FRAGMENT

IN BATUTA 6 MORE TILE FRAGMENTS AND ROUND STONES WERE UNCOVERED ADJACENT TO THE CONGLOMERATE WALL AND APPARENTLY PARALLEL TO IT.

THIS CONGLOMERATE WALL PROVED TO BE NO WALL AT ALL BUT A THIN LAYER OF PEBBLES WITH SOIL UNDERNEATH. THE WORKMEN REMOVED THE FEATURE IN THE COURSE OF BEGINNING BATUTA 7.

BATUTA 7

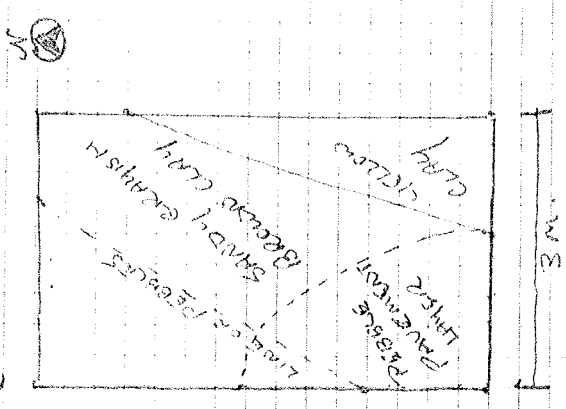
MATERIAL: BONE, COARSE WARE, 1 FRAG. OF GLASS (BRACED SEPARATELY)

BATUTA 8 WORKMEN COME DOWN TO A PEBBLE LAYER. A PORTION OF THIS WAS LEFT UNTOUCHED FOR PHOTOGRAPHING WHILE THE REST OF THE TRENCH CONTINUES TO BE EXCAVATED.

IN BATUTA 9 THERE IS NO CHANGE IN SOIL

FIND: 1 RED FIGURE SHERD.

ALL MATERIAL RECOVERED FROM THIS BATHIA WAS FOUND IN THE SANDY GRAYISH BROWN SOIL, WHILE THE YELLOW CLAY WAS VIRGIN OR MATERIAL ARTIFACTS DATE FROM 6th c BC to 1st c BC (including frag of RED FIGURE) IT IS FELT THAT THE SANDY AREA REPRESENTS A ROBBED WALL IN TO THE AREA OF WHICH DEBRIS FROM THE SUCCEEDING CENTURIES COLLECTED. THE PROBLEM WITH THIS, HOWEVER IS THAT ANCIENT DEBRIS BREAKS ARE NOT KNOWN TO USE DRESSED STONE.



JULY 2 / 1976 N-S TRENCH, N-W QUADRANT, 2ND LEVEL (K'-2)  
3RD BATTUTA (JUST NORTH OF AREA EXCAVATED YESTERDAY)  
MATERIAL IS MOSTLY COARSE WARE FRAGMENTS AND ANIMAL BONE  
ONE FRAGMENT OF GLASS FOUND IN BATTUTA 6

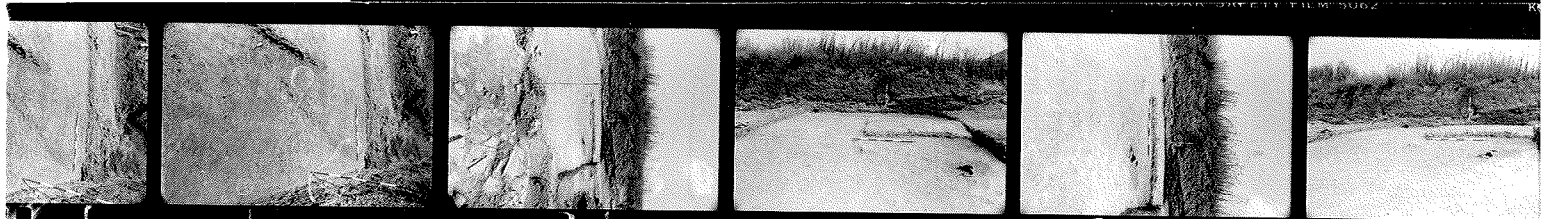
BATTUTA 7 SHOWS MIXTURE OF ROMAN GREY GLAZE AND BLACK GLAZE  
(4th C. BC) THIS MATERIAL HAS COME FROM DE CORNER OF TRENCH.

AT BATTUTA 8, 2 stones, one large and rectangular one smaller  
were found in association with one another. They were known  
to exist from yesterday's section but at this level these dimensions  
were hardly clear.

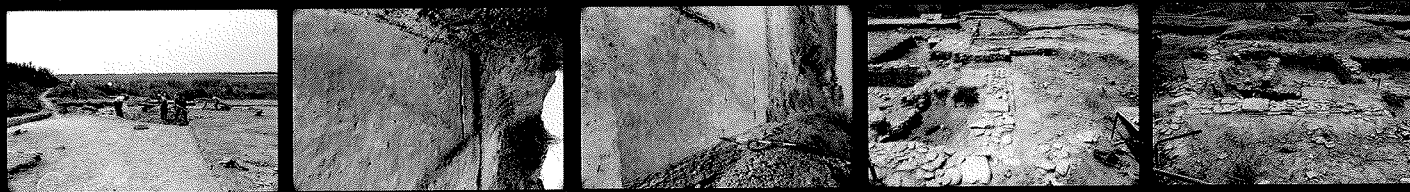
JULY 5, 1976

Continuing in N-S TRENCH. At this point the north-  
south trench is in 3 levels. The south side is in battuta 9,  
approx a meter wide strip in the center is at B. 8 and  
the north end is at B. 7. Work begins with the stripping  
of these levels to that of the stones. At this point all  
the material seems to be coming from the eastern side  
Found stones appear in the NW corner. Material: Coarse ware  
gray glaze, Terra Sigillata. See





→ 1A ← 2 → 2A ← 3 → 3A ← 4 → 4A ← 5 → 5A ← 6 → 6A ← 7 → 7A ← 8 → 8A ← 9 → 9A ← 10 → 10A ← 11 → 11A ← 12 → 12A ← 13 → 13A ← 14 → 14A ← 15 → 15A ← 16 → 16A ← 17 → 17A ← 18 → 18A ← 19 → 19A ← 20 → 20A ← 21 → 21A ← 22 → 22A ← 23 → 23A ← 24 → 24A ← 25 → 25A ← 26 → 26A ← 27 → 27A ← 28 → 28A ← 29 → 29A ← 30 → 30A ← 31 → 31A ← 32 → 32A ← 33 → 33A ← 34 → 34A ← 35 → 35A ← 36 → 36A ← 37 → 37A ← 38 → 38A ← 39 → 39A ← 40 → 40A ← 41 → 41A ← 42 → 42A ← 43 → 43A ← 44 → 44A ← 45 → 45A ← 46 → 46A ← 47 → 47A ← 48 → 48A ← 49 → 49A ← 50 → 50A ← 51 → 51A ← 52 → 52A ← 53 → 53A ← 54 → 54A ← 55 → 55A ← 56 → 56A ← 57 → 57A ← 58 → 58A ← 59 → 59A ← 60 → 60A ← 61 → 61A ← 62 → 62A ← 63 → 63A ← 64 → 64A ← 65 → 65A ← 66 → 66A ← 67 → 67A ← 68 → 68A ← 69 → 69A ← 70 → 70A ← 71 → 71A ← 72 → 72A ← 73 → 73A ← 74 → 74A ← 75 → 75A ← 76 → 76A ← 77 → 77A ← 78 → 78A ← 79 → 79A ← 80 → 80A ← 81 → 81A ← 82 → 82A ← 83 → 83A ← 84 → 84A ← 85 → 85A ← 86 → 86A ← 87 → 87A ← 88 → 88A ← 89 → 89A ← 90 → 90A ← 91 → 91A ← 92 → 92A ← 93 → 93A ← 94 → 94A ← 95 → 95A ← 96 → 96A ← 97 → 97A ← 98 → 98A ← 99 → 99A ← 100 → 100A



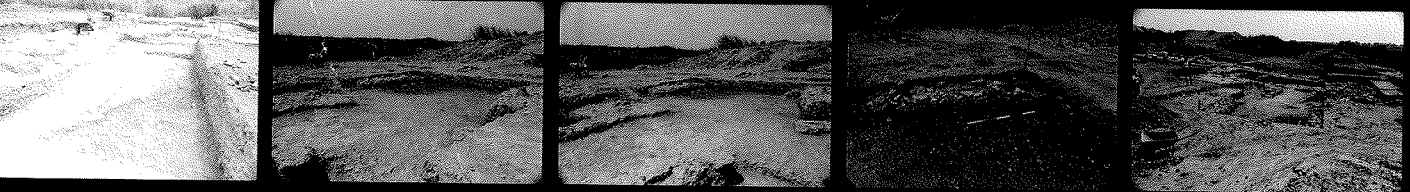
KODAK SAFETY FILM 5062 KODAK SAFETY FILM 5062 KODAK SAFETY FILM 5062 KODAK SAFETY FILM 5062 KODAK SAFETY FILM 5062



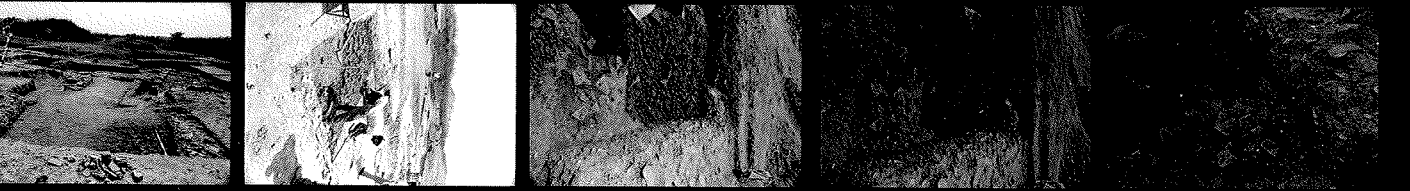
KODAK SAFETY FILM 5062 KODAK SAFETY FILM 5062 KODAK SAFETY FILM 5062 KODAK SAFETY FILM 5062 KODAK SAFETY FILM 5062



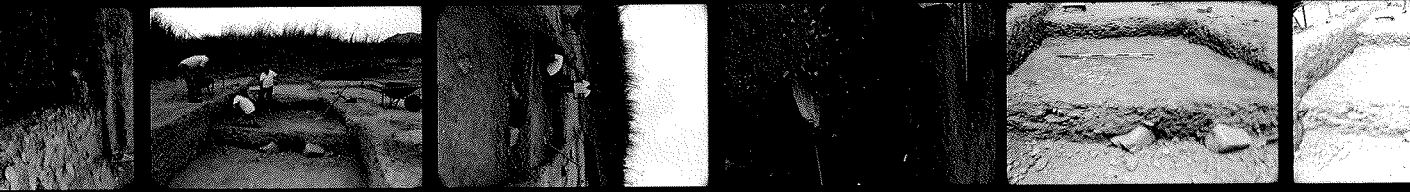
KODAK SAFETY FILM 5062 KODAK SAFETY FILM 5062 KODAK SAFETY FILM 5062 KODAK SAFETY FILM 5062 KODAK SAFETY FILM 5062



KODAK SAFETY FILM 5062 KODAK SAFETY FILM 5062 KODAK SAFETY FILM 5062 KODAK SAFETY FILM 5062 KODAK SAFETY FILM 5062



KODAK SAFETY FILM 5062 KODAK SAFETY FILM 5062 KODAK SAFETY FILM 5062 KODAK SAFETY FILM 5062 KODAK SAFETY FILM 5062



KODAK SAFETY FILM 5062 KODAK SAFETY FILM 5062 KODAK SAFETY FILM 5062 KODAK SAFETY FILM 5062 KODAK SAFETY FILM 5062

N/S TRENCH 7/8/76

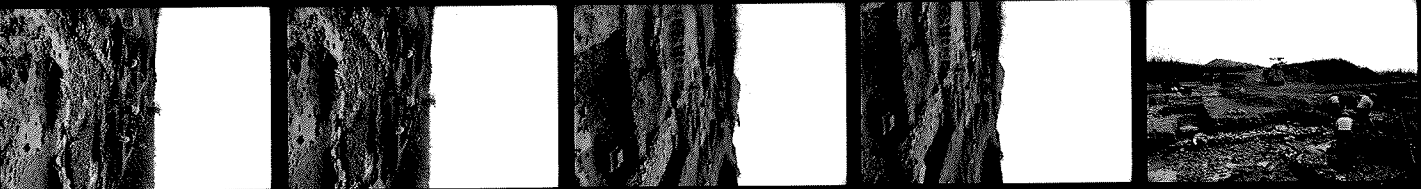
SAFETY FILM

KODAK PLUS X PAN FILM

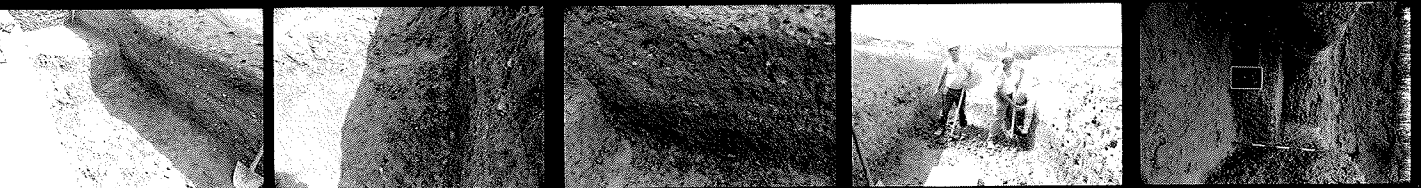
KODAK SAFETY FILM



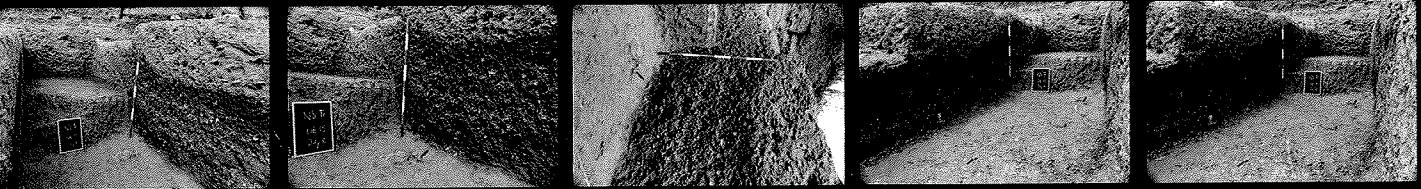
→ 2 → 2A → 3 → 3A → 4 → 4A → 5 → 5A → 6 → 6A  
KODAK PLUS X PAN FILM KODAK SAFETY FILM



→ 7 → 7A → 8 → 8A → 9 → 9A → 10 → 10A → 11 → 11A  
KODAK PLUS X PAN FILM KODAK SAFETY FILM



→ 12 → 12A → 13 → 13A → 14 → 14A → 15 → 15A → 16 → 16A  
KODAK PLUS X PAN FILM KODAK SAFETY FILM



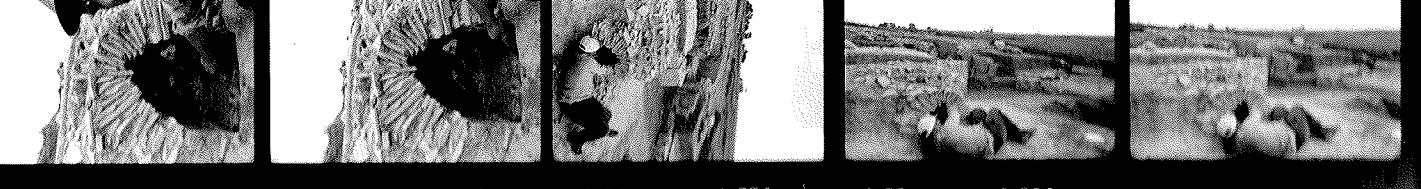
→ 17 → 17A → 18 → 18A → 19 → 19A → 20 → 20A → 21 → 21A  
KODAK PLUS X PAN FILM KODAK SAFETY FILM



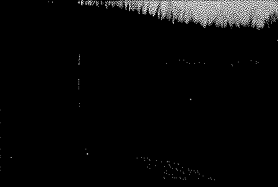
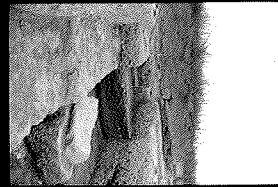
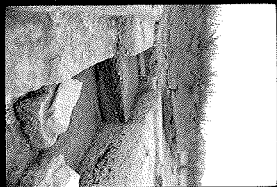
→ 22 → 22A → 23 → 23A → 24 → 24A → 25 → 25A → 26 → 26A  
KODAK PLUS X PAN FILM KODAK SAFETY FILM



→ 27 → 27A → 28 → 28A → 29 → 29A → 30 → 30A  
KODAK PLUS X PAN FILM KODAK SAFETY FILM



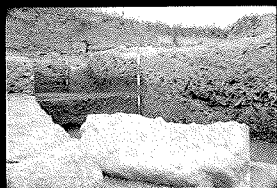
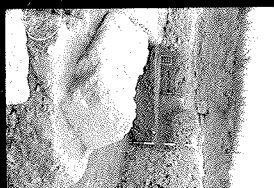
→ 31 → 31A → 32 → 32A → 33 → 33A → 34 → 34A → 35 → 35A



→ 7      → 7A      → 8      → 8A      → 9      → 9A      → 10      → 10A      → 11      → 11A

KODAK PLUS X PAN FILM

KODAK SAFETY FILM

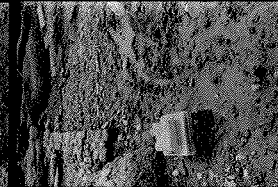
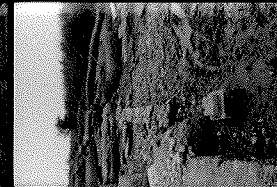
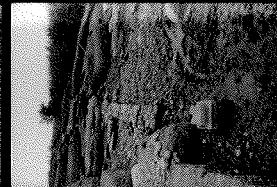
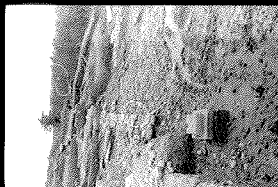


→ 27      → 27A      → 28      → 28A      → 29      → 29A      → 30      → 30A      → 31      → 31A

M FILM

KODAK SAFETY FILM

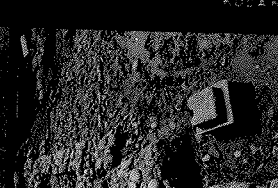
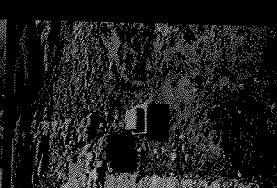
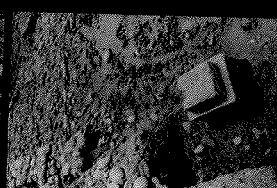
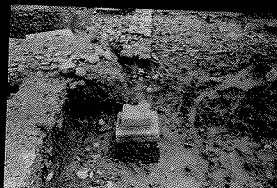
KODAK TRI X PAN FILM



1A      → 5      → 5A      → 6      → 6A      → 7A      → 8      → 8A      → 9      → 9A

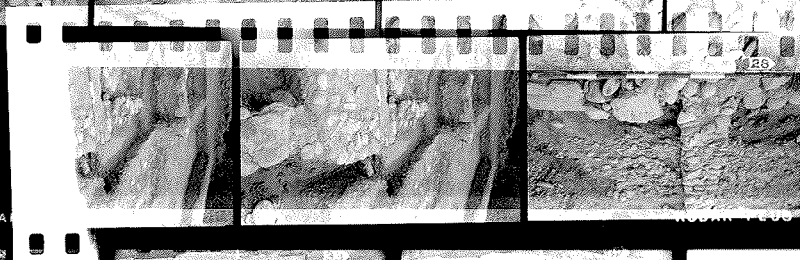
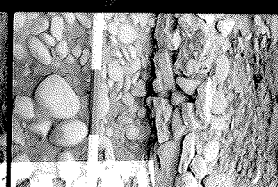
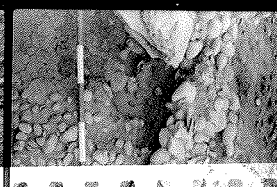
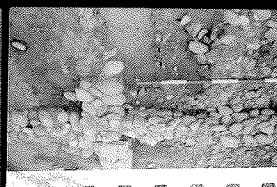
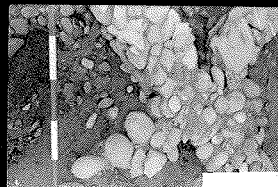
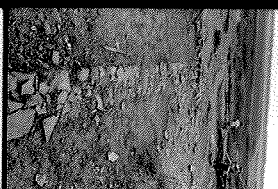
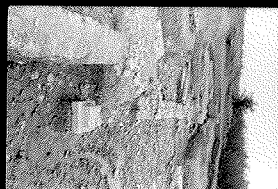
KODAK SAFETY FILM

KODAK



→ 10      → 10A      → 11      → 11A      → 12      → 12A      → 13      → 13A

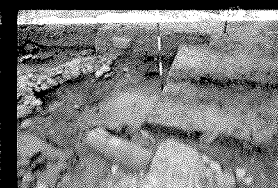
KODAK



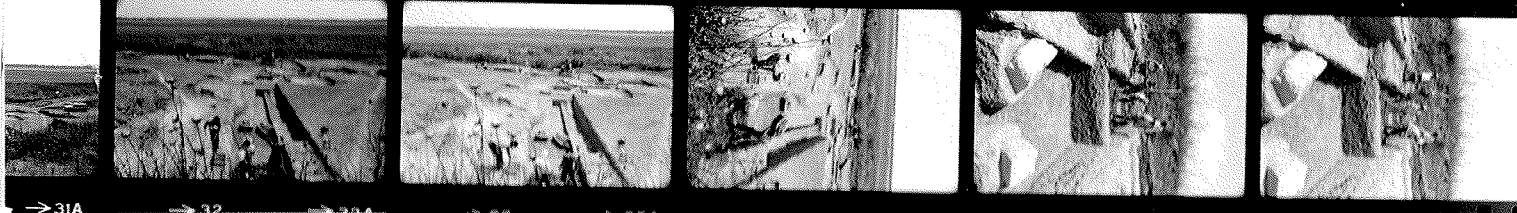
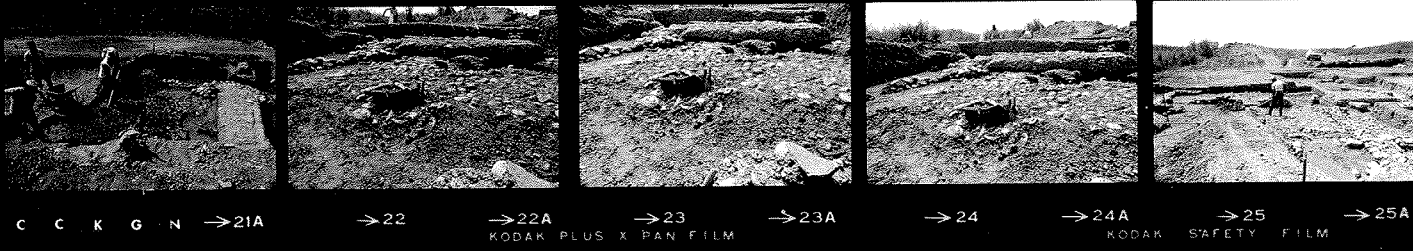
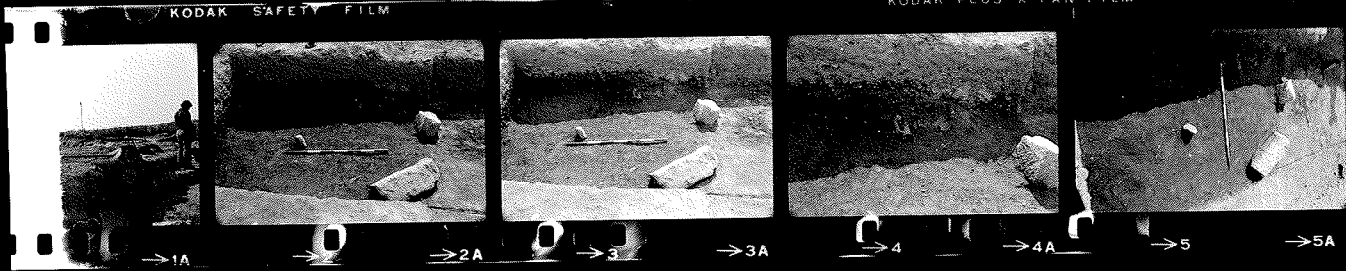
PLUS X PAN FILM

KODAK

KODAK PLUS X PAN FILM





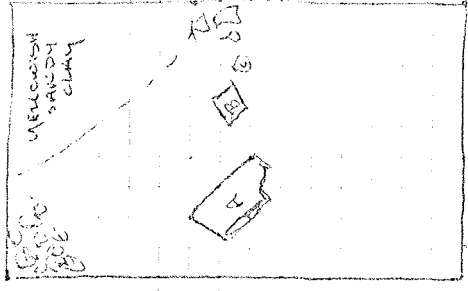




NORTH SOUTH TRENCH (K-2)  
BATUTA 7

STONE A - trapezoid.

STONE C - MILL STONE?

STONE C



MUCH material comes from the eastern side of the trench  
 Ternu Baghatta, Gray Gage, an immense number of broken  
 tiles. Some of these appear to be roof tiles   
 A small amount of black gage, some cutting, large amount  
 of material at this level. 

Battuta 9 material. one fairly complete amphora neck and handle,  
one architectural fragment (coltute base?) one lamp fragment.  
Following the removal of Battuta 9 it was decided to excavate  
a 2 meter wide deep sounding along the east wall to  
discover the extent of the cultural fill.

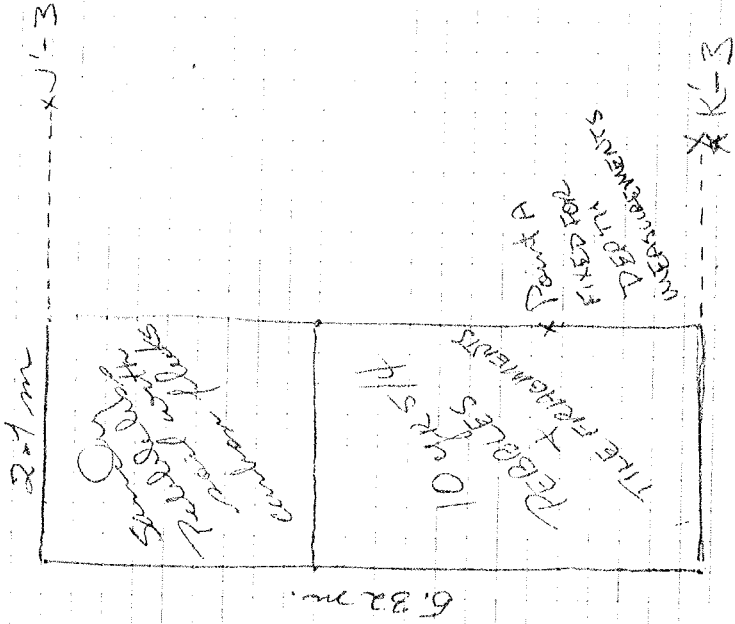
At Battuta ~~9~~<sup>10</sup>, there is a change in soil color from dark  
grayish brown to light yellow-brown sandy clay grading  
into greenish yellow clay ~~on~~ east side of ~~trench~~ trench  
north of trapezoid

Battuta 11 characterized by yellow-brown sandy clay. On top  
of this is a hummed layer with small carbon fragments.  
Some pot sherds show evidence of burning on the exterior.  
This layer shows a sharp decrease in the amount of  
cultural material and its presence here at all may be due  
to subsidence from higher levels.

NOTE - SECTION DRAWN OF NORTH END OF TRENCH.

July 6 / 1976

Work begins with the lowering of the north end of the N-S trench from level 2. Batauta numbers will begin with #3:



SOUTH SIDE SOIL COLOUR 10 YR 5/4 yellowish brown.

lots of rocks, especially compacted towards south end

Approx 25 cm below surface (point A)

North side pebbles, sandy clay soil becoming more

yellowish 10 YR 5/6 bluish

material in soil (approx 33 cm below point A)

43  
Batuta 4, level 2 N-S trench

South side - soil color remains essentially the same, slightly less gravel approx 50 cm below surface level.

North side - soil is essentially the same color, no pebbles  
veins of reddish brown and carbon frag.  
finds include a bronze ring (horse bit?) About 1/2 meter  
from north end wall section. Soil grades into 2.5y 6/10 shne  
yellow. A number of tile frags. appear in this zone.  
Depth - 59 cm.

Batuta 5, level 2 N-S Trench

South side - large no. of banded stones and tile fragments,  
soil color unchanged. Gray glaze, black glaze and coarse ware  
fragments - ~~500~~ Soil is lighter in color at South edge of trench  
Depth - 69 cm.

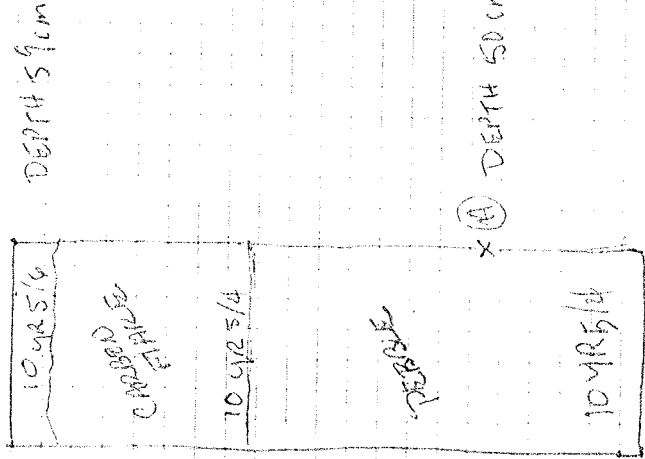
North side - burned frags. in 10y 5/4 clay extends into  
south side, where the pebble layer reads southward  
olive yellow clay also extends further south and  
contains larger carbon bits. A sample of this was  
taken as well as a soil sample of the three types; soils

76-40955

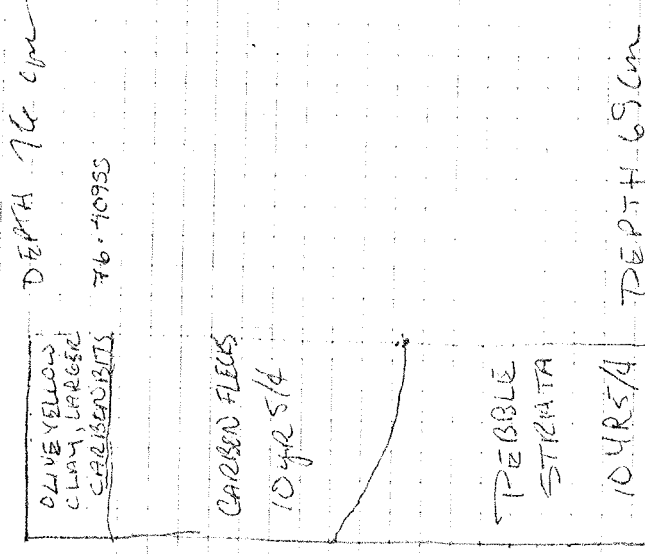
76-41055



BATUTA ↓



BATUTA ↓



45

Batuta C South Side - PEBBLE LAYER CONTINUES TO DECREASE IN WIDTH, DEPTH OF LEVEL is 83 cm.

North Side OLIVE YELLOW CLAY EXTENDS FARTHER SOUTH, BROWN SANDY CLAY WITH CARBON FLECKS has yielded most of gray clay material in all levels on the slope of the three levels is evident on the bench section. Out of olive yellow clay level a Greek block of gray was excavated. Depth - 83 cm

June 25 N' 1

Level 1 - down to full tile and  
stones which covers and the western half  
of the trench and appears to extend to N.S.W.

level 1A - tiles and brick  
immediately below material full brick 4th  
Century B.C.

level 2 - half of trench only. grey clay  
with some material

June 28

Long NS trench which extends from S. 6 to S. 5 N. It is centered on the W. edge of conglomerate block (with or w/ S. 5 N. block) dissected by paleo centerline and is three meters wide. This falls approximately on N-S axis and squares R, R, R, S.

Level 1 - around conglomerate block, at level of the tile wall to east and, below a yellow brown, clay with stone, some material - FIND BFD fragment, just to N of the wall.

To south of conglomerate block extensive tile and brick full of tile in wall next to conglomerate block suggests that wall is next to conglomerate wall. This level 1 is all that above the tile falls with of conglomerate block patch of white clay apparently all coarse ware. Level 1 is full of tile here. About 3 meters north north wall of S. 6 a rubble "wall" (think) of 5-10" diameter small fragments, lots of tiles in fragments.

Level 2 - Below level of rubble wall, material N.B., Brick glazed base. Arretine

NS Trench, marked by 3 meters

2nd half  
2nd cuttings - 3rd fail to uncover the western  
extension of the EMB conglomerate which  
continue in a N-S trench

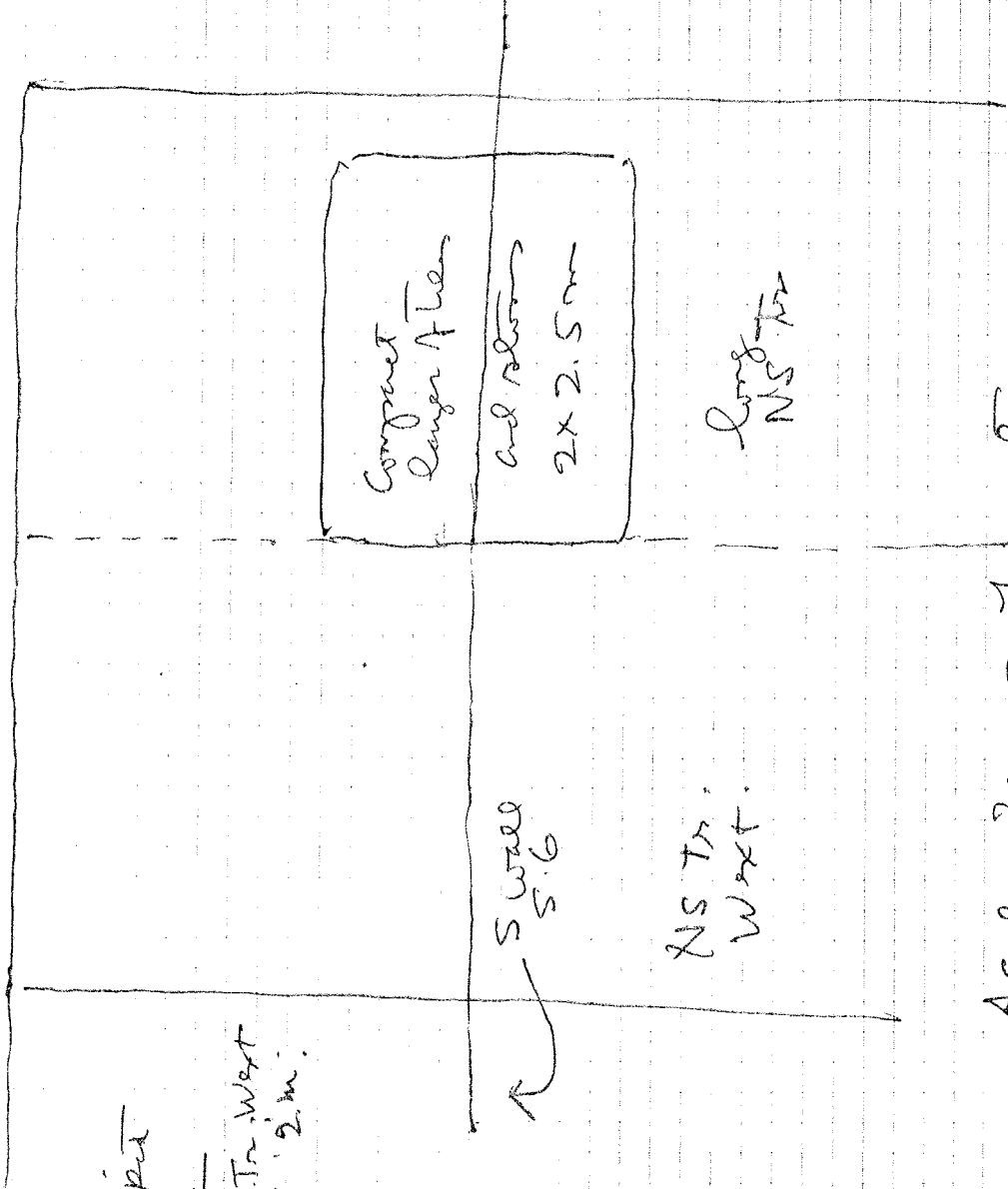
3rd cuttings takes 15-20 cms below level of  
tile and stone fall at the corner labels conglomerate  
The soil is white which also uses labels conglomerate  
little material. It is still compact and contains  
in view of the fact that we have not picked  
up the shell. Perhaps 3rd cuttings should be  
considered 1A as it will be below material level of  
fall, but too late now, and material level is space

North half (division between North and South comes  
about 1 meter North of conglomerate wall.

2nd cuttings reveals the wall of stone and  
tile is really a compact layer medium 2x  
wide NS trench, but not in original British  
material from level 1 is largely coarse ware.

level 2 is taken to be that below the level of compact  
layer and contains large fragments of grey glazed and  
speltine  
Large NS trench almost white 2m in east side of the  
layer NS trench about 2m in south of compact  
is level 1, looks like shingle. The

N wall S6



Scale 2cm = 1 meter

June 30

55.

NS Tr. and West  
Level 1 3rd level water

FIND: Just not a line EW of conglomerate and  
"porphyritic", but West of visible blocks — TC head  
material: mostly coarse, but some Gravel, medium

NS Tr. West exterior

North half. Level 2  
in West (3 meters) At NS trench at same  
Point where faults strike the tile and rock  
compactly found in NS Tr (original 3 meters)  
is a sublevel of gravel. no meter soil,

level 2 to the North of the gravel (when steps  
about where the conglomerate layer flows out to  
North. much material in detail level 2  
Grey glaze sample taken; checked wood!

NS Tr. (original)

North half: south of conglomerate level of  
Level 2 and 3. An area of white fine white  
conglomerate. Area measures approx 2 1/2 m in EW  
direction, and 2 meters in NS. Soil is grey brown.

At South edge of cream Alpha (NS Tr. east, north half) a fragment of a fragment found for sure in soil fragment collected at place for white level 2. It is at the north edge of patch of white clay - (origin?) area above.

NS Tr. West ext. Beta.

A north and level of breccia which be fine about halfway between Volmeria well and compact layer of tree and brick contains little material same to P.D. Tarant like the pavement of a road could be part of the same structure as the compact layer of brown tiles are very scarce as the compact just at lower level in West extension of NS Tr.

NS Tr. and West ext.

Level 2 North and to cut parallel to the N wall of S. 6 and parallel to it were 2 metal rods a long strip of burnt wood and Sweep metal which lies to the north of the samples taken earlier and to the north of the E.W. zone. Its west end lies compact layer of rock and tile in NS Tr. east.

The area of NS Tr. South of Compact layer called Alpha has gravel also. The gravel and sand is approximately 6 m thick and extends the cut in S from area to the south.

The traces of beam of carbonized wood called Beta so down to a level of yellow clay, which



suggests that it was burned at the time the clay pit ceased to be used as a clay pit.

July 2  
N 1

Trench in level 1 clay when the fall  
 in with half trench. This when the fall  
 was the full trench. This is level 2 level 1A  
 systems to be all immediately below material  
 level 2 in N 1 cut. But I got some of  
 soil here is N of East part of trench cleaned up  
 level 2 in N 1 cut. But basically, the same  
 grey clay. Level 2 in N 1 cut. The level take  
 fall level 2 immediately below the level take  
 five EVK immediately below the level take  
 (level 2 in N 1 cut) on the NE side corner of the trench  
 in NE section. Level 2A immediately after cleaning take  
 at the same level and just.

76.31855  
76.328 p.

July 5

O' - 1 level 1 begins with the piece of tin  
 bulldozer cut. Greyish Brown Clay, many fragments  
 or like  
 FIND coin, bronze badly corroded.

Level 1, 2 balt  
 N <sup>earth</sup> level, angle of - wide SW corner, the NW corner  
 of a room?  
 Level 1 with 3

NB several fragments of statuettes  
 FIND: head of a statuette

at the bottom of level 3 in N half appear the  
top of large stones. Some appear to be "padding"  
level 2 NW corner, strip of breccia with material  
immediately under.

July 6 Susan Andrews digger uses a m see page  
9-m

O'1 level 2 lot 2 - We are now at the  
level of the field above partment of O'-3 but field  
stones extend only along a meter of O'-4 but field  
should be there for equivalent of level 3 in O'1-3  
material. Archean stratification in a layer  
of clay. Above the field stones present in a layer  
of clay. Above is a collection of clay that were  
discovered in morning of lot 2 level 2, lot 1  
(privately) they will be collected in 2 separate lots  
those platies and lot 2 - 30 cm below level of  
conglomerate wall in O'-3. The top of the  
stone wall in south west field area. lot 2 level 2  
higher than conglomerate wall, and approx. 1 meter  
on a level with the lot 2 level of lot 2  
There are several lot 2 level of lot 2  
belt of lot 2 level of lot 2 level of lot 2  
to a while this wall, which lot 2 level of lot 2  
extension of the lot 2 EW fieldstone wall found in O'-3,

O'-2, South, P'-2 North Bauls, clearly  
level 1A

O'-2 S, P'-2 N sands  
level 2, 1 batt (Buffale working alone)

level 2 seems slightly to the west of the line of the NW field road while which intersects the E-W field phone wall in O'-2 at approximately level 2. There are slightly east the level of the hills which appear in the face of O'-2. This covers level to the level of gravel at bottom of conglomerate block in east wall of O'-2.

O'-4, level 2, batt 2

There is a fault at the bottom of this level when the grey clay pulls away from the clay vein has more bedded in it. The material which is a mix of or chert and further center the level is a mix of sandstone and chert from the sandy level and is pulled out with the fault.

level 3 - the next batt should be cleaner. The photos should be noted are entirely in the non-sandy grey clay. The sandy level slightly above the level of the field some present, or slightly below.

July 7

NS Tr. Narrow opening  
 July 6. Work left of North section began  
 N side in excavation. North part of T built in  
 of the trench to the north. The section  
 of the trench which lies slightly to the north of the  
 S 6. In lower part of this area, the soil is  
 changing from soft sandy brown to yellow clay  
 with gravel. Grey gneiss of large size  
 ware of iron fragments.

0.4 level 2, batt 2

Work left in trench on July 6 with a small amount  
of fine gravel at least end of trench yet to be excavated

NS Tr. South End (see notes July 6)

Soil here changes to soft brown

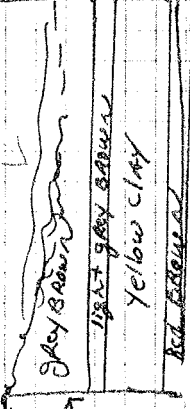
seen earlier to north. At the south end of the South end soil is grey and gravelly.

It is the lower edge of distinct level of gravel and tiles which can be noted

in the East wall of the trench  
(Gravel + tiles)

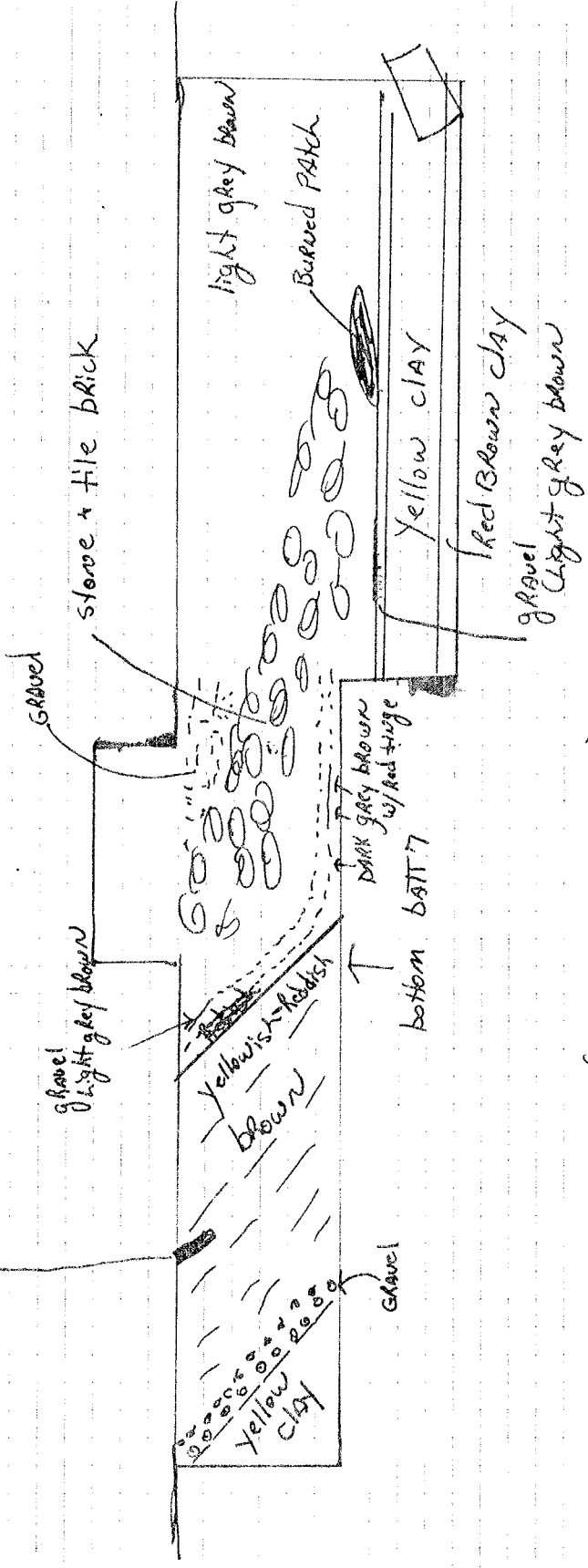
← Soft Deep Sand (grey/brown)

EAST WALL



South End of North Extension begun on July 6

CHARRED PATCH (The beam noted earlier at the top of level 2)



(NOT TO SCALE)

BANK O'-2, P'-2  
level 2, a batt

begun July second; continued; this is below the level of the pebble and fieldstone surface, described yesterday. We wish to describe this mass to see if it is in fact the continuation of the N.S. wall.

At the bottom of this battuta appears a level of large field stones, perhaps, a continuation of pavement in O'-2.

N.S. Trench N End

BATTUTA 8 the level of grey with stones is thin, the yellow clay reappears

July 7

O'-4 levels

Soil is sandy occasional field stones material archaic. At bottom, the pavement of fine field stones (found in O'-3) At the west end of the trench we succeed in isolating level of archaic material

Segment of stone wall in north face N trench which continues to north. Rests on level of small stones like the ones discovered



73  
in O-3, under it is the layer of sand, and under the sand, a layer of clay. All the material which comes from the conjunction of sand and clay is Archaic we have been calling the material "O-4 level 3 BATH 1" Below the piece of pavement on which the fieldstone <sup>which are?</sup> rests is another pavement of tiny stones, like that found in east half of O-4 called this morning. The level of this tiny stone pavement (found also in the immediate vicinity of the field stone wall) is the same as that of the clay under the sand described just above. Di TARANTO thinks there is also a little clay above the level of the pavement. The tiny stone pavement is thus the Archaic floor, of which little is left because (perhaps) the area was very much disturbed when the pavement and wall above were put down. Material of 4th Cent B.C. is found above the small stone pavement on which the wall <sup>which are?</sup> rests.

Theory of three levels of pavement seems to be confirmed by excavation in Eastern part of O-4. There is pavement of large fieldstones as in O-3. Under this, near north wall of trench is pavement of smaller stones as in O-3. Even farther down is level of tiny stones. The distance separating all three pavements is perhaps 4-5 cms in each case.

Find: head of TERRA COHA duck white glaze.

TAKE sample of burned wood from face of virgin clay. This should help to date the first filling of the clay pit. It is considerably below the level of the burned beam; of which the samples were taken. A meter below in the vertical sense in terms of stratigraphy, below the level of the "beam" which Angles Deep, southward is to the ground going 40 below the surface from which the samples were taken. There is a layer of brown soil, a thin layer of yellow, a layer of brown. This brings us down to the face of the cut. It can all be seen in the east face of the cut. The stratigraphy in the west differ. There is a more or less uniform layer of reddish brown soil down to a layer of greyish soil with tiles in it. Then the face of the cut comes next. The charred wood sample was taken from this greyish layer, but some yellow clay mixed with it. There are also some hunks of iron with charred wood

July 8

77

N.S. French  
Finkh 12 BATT in South end (N. End virginiclay soil several batt.)  
Soil is sandy grey brown. with the 13th BATH the level of deep sounding  
began on July 5 and that of last week are even. The stratigraphy  
changes very sharply at the point dividing, north and south  
Ends of North Extension's deep sounding begun on July 5.

N.S. French Send batt 8 large horizontal patches of charred wood in  
west wall!!! July 7 "Rained out in afternoon"

It slopes sharply following the slope of the clay deposit. Fortunately we have  
been dividing material at this point. So our artificial horizontal stratigraphy  
can be adjusted to the reality; soil color description will help.  
BATT 13.

greyish clay as one approaches the clay bank, becoming yellow & to S. End

Baulk 0'-2 0'-3 3 BATT

Wall discovered in Baulk (1st BATT yesterday went down to level of gravel on top  
of conglomerate block visible in west face)

2nd BATT went below this stone pavement.

3rd BATT reaches level of lower gravel pavement

conglomerate block appears to be isolated part of wall discovered in north 79  
End of bulk

4th Batt - Down to slightly above level of field stone floors (which  
doesn't exist here. Soil is grey clay. Large squared block band under  
field stone wall in north face of cut. This block rests on a layer of  
gravel which is the same on which the conglomerate blocks in East  
face of 0-2 rests. It can be seen to extend in section in North  
wall of 0-3 and 0-4 for their whole length.

P<sup>3</sup>, P<sup>4</sup>

Open a 10m long trench in E-W sense, which is approx 3m wide in N-S  
Sense

Level 1

BATT 1 - A grating by the bulldozer, removed by hand.

BATT 2 - Wall of stones dividing Line b between P<sup>3</sup>/P<sup>4</sup> it seems

To be related to the rough stone wall found in S.W. corner of 0-4

BULK 0-2 / P-2

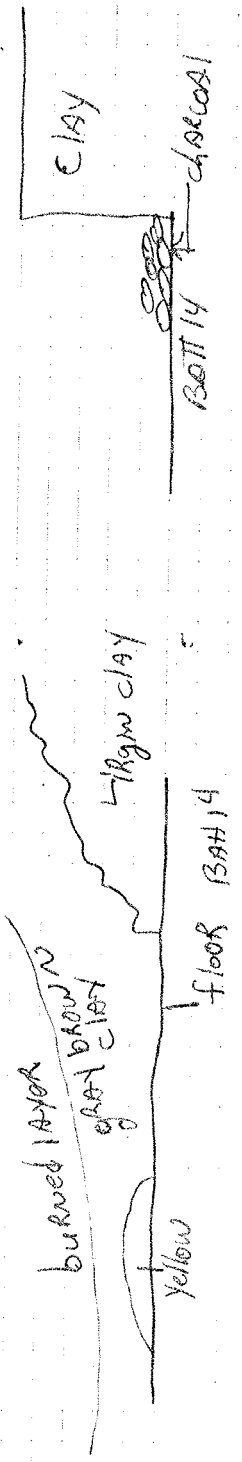
level 3 - material from just above field stone pavement

BATT 14. - begins at triglyph. many loom weights; at least a dozen. A lot charred wood some ~~tiles~~ tiles (soil sample taken)

Find - nearly complete lamp

material is concentrated near the face of the clay cut. Grey clay is

Apparently dipping down toward cut



Bottom of BATT 14 - much charcoal, large chunks occurs near clay deposit in NE. corner of trench

BATT 15 - darker clay horizon, rocky (gravel, although not massive amounts) very few artifacts almost sterile to J. mostly roof-tile fragments

O1-3 - bulk removed in SW corner south of FS1 Black glaze and fineware, coarse ware appears.

N.S. Trench

Find - gray glaze cup complete artifacts seem to occur in

(in part of trench some large fieldstones cut stone appears tiles red clay curved

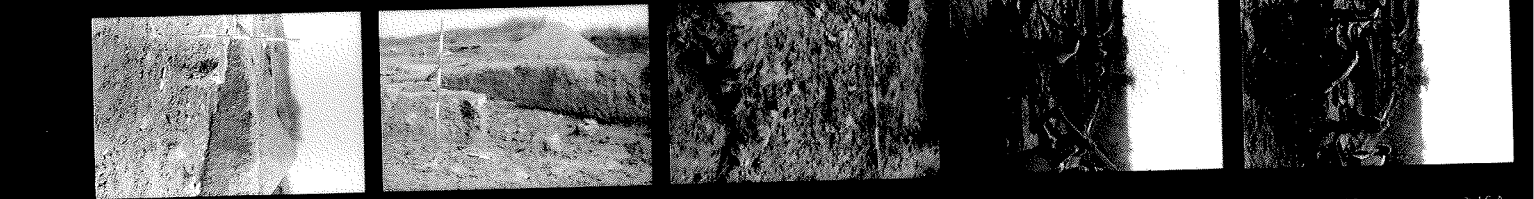
7/9/76



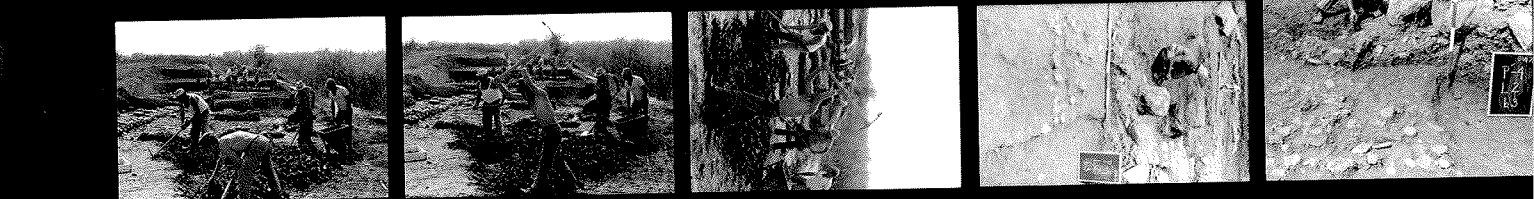
SAFETY FILM 5063 KODAK SAFETY FILM 5063 KODAK SAFETY FILM 5063 KODAK SAFETY FILM 5063 KODAK SAFETY FILM 5063



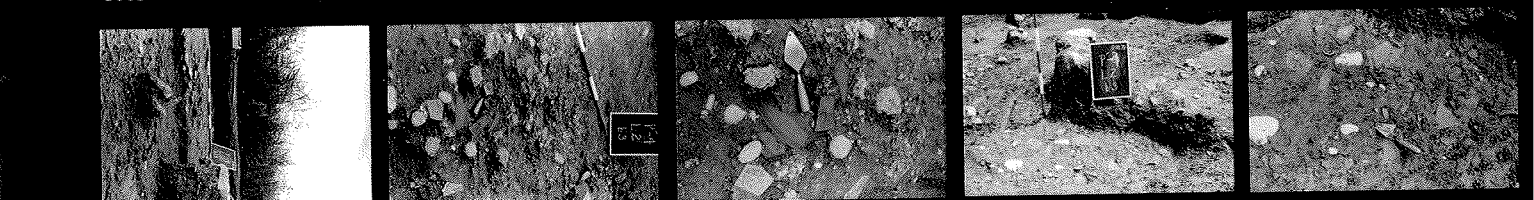
→ 3A → 4 → 5 → 6 KODAK SAFETY FILM 5063



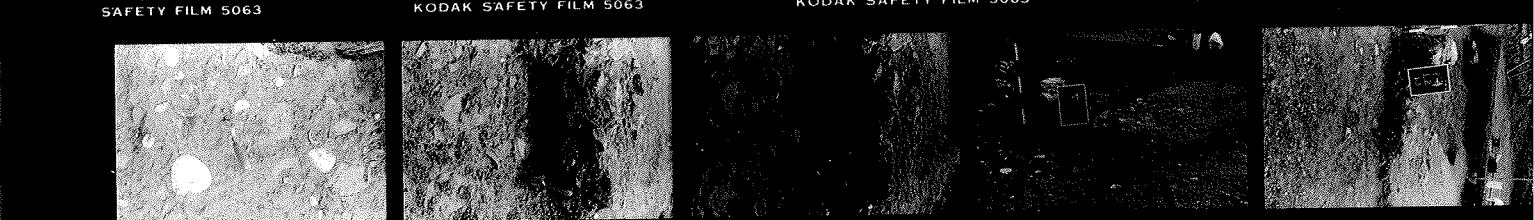
→ 7 KODAK SAFETY FILM 5063 → 8 KODAK SAFETY FILM 5063 → 9A → 10 → 11 KODAK SAFETY FILM 5063



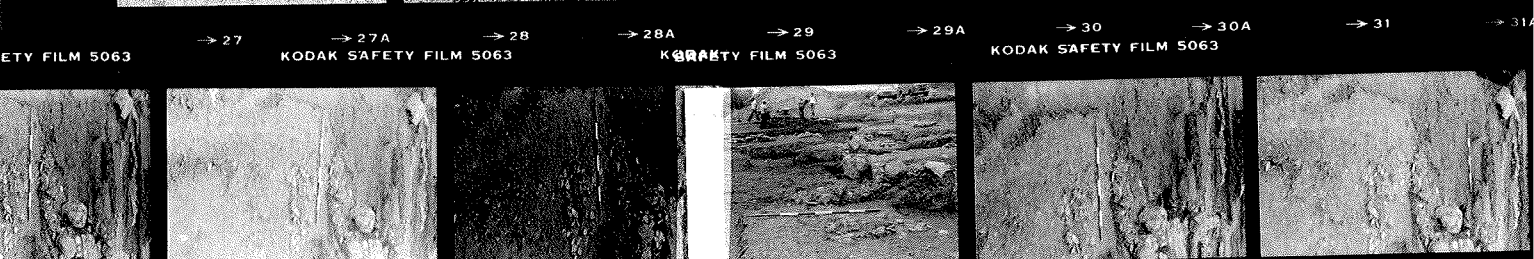
→ 12A KODAK SAFETY FILM 5063 → 13 → 13A KODAK SAFETY FILM 5063 → 14 → 14A → 15 KODAK SAFETY FILM 5063 → 16A KODAK SAFETY FILM 5063



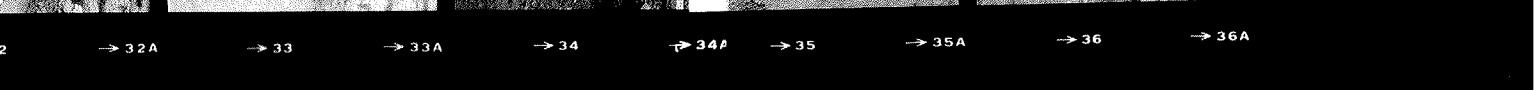
→ 17 5063 → 17A KODAK SAFETY FILM 5063 → 18 → 18A KODAK SAFETY FILM 5063 → 19 → 19A KODAK SAFETY FILM 5063 → 20A → 21A KODAK SAFETY FILM 5063



→ 22 SAFETY FILM 5063 → 22A KODAK SAFETY FILM 5063 → 23 → 23A KODAK SAFETY FILM 5063 → 24 → 24A KODAK SAFETY FILM 5063 → 25 → 25A KODAK SAFETY FILM 5063 → 26 → 26A KODAK SAFETY FILM 5063



→ 27 ETY FILM 5063 → 27A KODAK SAFETY FILM 5063 → 28 → 28A KODAK SAFETY FILM 5063 → 29 → 29A KODAK SAFETY FILM 5063 → 30 → 30A KODAK SAFETY FILM 5063 → 31 → 31A KODAK SAFETY FILM 5063



→ 32A → 33 → 33A → 34 → 34A → 35 → 35A → 36 → 36A

marble block small (but with ~~what~~ the Sinishead edge?)

The mottled yellow red core w/ yellow surface curved. The soil to the E (E1/2) is very sandy. Dissent from the westra which is claying, Dashed. This begins 2.5m north of trigypk. Partially complete vase found in NE corner next to yellow Bank, Round under barned area.

16th Boat read virgin clay virtually all over the track, but there is an apparent ancient Ditch? Running. From NE to SW, little material some grey glazed Rims. 76.41255

Boat 17

N1-1

Continue take down the gravel floor between two walls. South wall is the conglomerate wall, we are <sup>ball</sup> level below the level of the top of the N1 wall. It is pure gravel with little or no material.

July 9

P1-3 Finished and 5thata which is level 1 Find - head of figurine with headless

P1-4 Begin 3rd boaturna grey clay, all this level 2 because it takes us below the level of the top of the wall.



Discovered yesterday in NW corner of P-4 a thick concentration of plates & cups & SS with anchor profile, we are still much higher than the level of the field stone floor in O-3, there appears to be some large field stones under this mass.

Find. Consider the whole collection <sup>of pottery</sup> & special find. (note, profile of archaic cup mixed with large field stones in pavement in O-3 <sup>at back of?</sup> L-3.

Correction both line level ascertain that we are at the level of the field stone floor in O-3, slightly above the level of the smaller stone floor in O-4. Note still well above the level of the ting stone pavement. The lower course of the field stone wall which disappears into N. wall of O-4 is more or less at the same level. AS is other fragment of field stone wall in O-4

note: the level of stones under the concentration of pottery seems to be extending. If it does in fact turn out to be a field stone pavement ~~as~~ in O-3 then we would be in what we call level 3 there and level 2 batt 2 in O-4

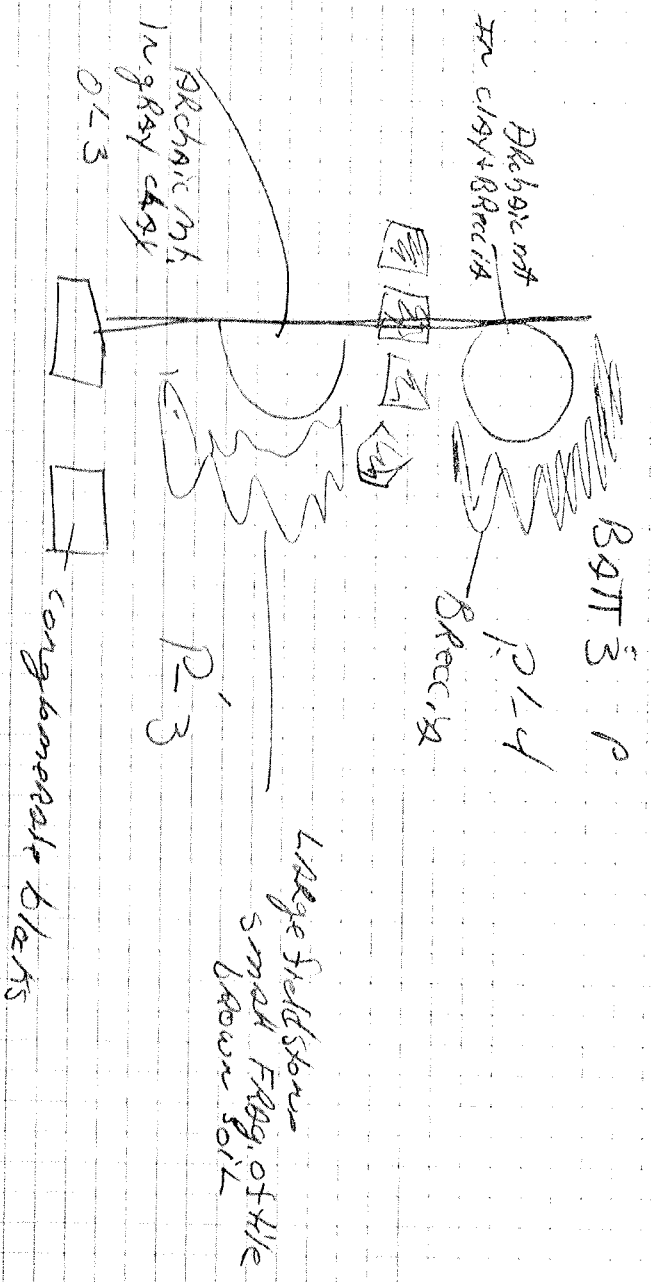
Find - head of statuette in P-4 (batt 4) level 2

P-4 batt 3 level 2

Clear rest of square down to the level of the batt. The area of the Archaic material had been left. A second layer under it contained a number of big plates and other Archaic material including fragments

of Iovian Gap. These plates must be Archaic in date, not direct as claimed by D'Andrè since all material is Archaic. For this reason it is important to keep the material together as a separate collection, and have it drawn. This second layer is also collected and put in a special bag. To east of Rongh stone wall, in D-3 a level of five cups, also of an Archaic date are discovered at the bottom of batt 3. They extended down into what will be batt 4. The most complete cup collected in a separate bag.

Find: Above field stone pavement in D-3 - these cups and material in the deposit in P-4 just described are located in a layer of clay



It appears that the material to the west in P-3 at the bottom of batt-3 has been dumped there. It consists largely of big fieldstones, small frags of tile, brown soil. In the SAR west end are two lg cong. bks.

Find: Sashed figure (T.C. Figure without head)

Find: Head of different make (T.C. fig.) note of the T.C. fig. FRAG.

Find: RG Cantolos in several lg FRAG. Smaller pieces nearly complete. Against southern of the two cong. bks.

With line level determine that the top of the deposit of cups cut in P-3 is even with the bottom of deposit in P-4. Even also with pavement of lg fieldstones and lowest courses of FRAGMENTS of wall in P-4

P1-3

Furnish Bath 4

Friday 16

91

P1-4

Began Box 4. Under the level of the special collection of pottery found on July 9 is a gravel layer and at some points under gravel ~~was~~ are a few tiles.

P1-3

Go slightly below level of Box 4 with shovel. In one in which special collection was removed on July 9 is one each one unaltered; "I have cup", large plates, etc. See also Box 4A.

P1+1, P1 4

Two strata a and down to the tile fall which was uncovered in the western half of No. 1. The tile floor is very uniform in color, I think to Peter out in P1-1, field stones mixed in, one square stone.

Battata 5

93

P1-3 Funds: non conglomerate blocks

where plaque found on July 9, TC figure  
head of bearded man, small stone

More precisely between in or flammest  
of tested blocks of "pubbing" stone in  
P1-3 and testimony.

To the east of the conglomerate lens in a  
circular patch of dark soil with several  
large field stones in it. How th? or  
plug of soil

P1-4 batt 5 only just

M-1

101

N.S. wall at highest level (rho)

composed of layers of tile over round field stone. Below the level of field stones to the west is a tile fall. . . . besides the field stones - at intervals are larger squared blocks. One in N.S. wall, middle and one at north end. Just east of corner there are several layers of tiles. E.W. section of same wall (TAU) extends into . . .

M-2

Where it turns north, this north extension is interlocked by the cut for the underground canal, a masonry work. E.W. wall at north end of square composed of large stones and squared blocks of pudding stone

28cm, 50cm long (Discovered in 1976 extends into L-2) this wall makes an angle into a N.S. wall (Sigma) composed of 5 layers of tile at one point near N end. At X5 S end this wall

This wall rests on a layer of clay which rests on a ~~tile~~ tile fall. The layer of clay is 5-10 cm. thick. This tile fall. A.S. can be seen in

Section lies over the top of a E.W. walls (Zeta & Theta). Under the

Tile fall is a layer of pebbles which is also under the level of the southern most of the 2 E.W. walls (Theta) this level of pebbles is even with the top course of the northern of the 2 walls (Zeta). These walls and pebble layer rest on grey clay. 40 cm separate the lowest course of the southern most of the 2 E.W. walls and the field stone pavement.

N.S. wall on EAST side of M-2 (N.S. stone wall)

Composed of field stones - occasional pieces of pudding. This wall goes down to within a few cms of the field stone pavement. It rests on grey clay at a point between the two E.W. walls. This wall apparently takes a jog continues into N-1

Still composed of field stones and pieces of pudding, but on top of these was a leveling course of tiles in N-1. And this level is in a layer of pebbles. A wide exposure pavement to the east has been considered. This wall apparently had an extension to the west in N-1 - out there is an interlocking. It rests on a layer of pebbles even with the N.S. stone wall. The level of pebbles is 40 cm

above field stone pavement and separated from it by a grey clay. The level of pebbles under the S.M. of the E.W. walls in M-2 is 50 cm above field stone pavement but this 50 cm thick



The line of this N.S. wall (N5 stone wall) continues into D-1, there the two sections of it. Here chunks of pudding stone are most common with leveling courses of tile. There are some ~~field~~ field stones in the southernmost of the 2 sections. A layer of grey slay separates this wall from field stone pavement.

## N-1

The wall comprised 40 cm wide and conglomerate blocks. There were on a layer of grey slay ~~with~~ some yellow soil then mixed in, which is 25 cm above field stone pavement. This wall apparently intersects the N5 Stone wall at a right angle just the top of its higher corner is below the level of the corner of field stones and tiles in the N5 Stone wall. South of conglomerate wall measuring an 80 cm of grey slay above field stone pavement is another Capital.

The floor with many hard stones mixed in the west wall of square level is about that of the same glomms are well as slightly higher.

I isolated large stone in north wall of eastern shell of the trench.

Below this the fill is a second (30 cm. lower). It is only a small portion.

# NOTE ON SQUARES EXCAVATED

- ✓ L'-3 p.55
- ✓ L'-4 p.29, 37
- ✓ M'-1 p.33
- ✓ M'-2 p.3, 15, 27,
- ✓ M'-2, N'-2 p.83
- ✓ M'-3 p.39, 45, 57, 69
- ✓ M'-4 p.27, 41, 47, 65,
- ✓ M'-4, M'-3 p.87
- ✓ M'-5 p.91, 97, 111.
- ✓ M'-6 p.3, 13, 25, 111, 121, 141, 149
- ✓ N'-3 p.29
- ✓ N'-3, N'-4 Room 1 p.49, 59
- ✓ N'-4 p.5, 69
- ✓ N'-5, O'-5 p.71, 77, p.189 ✓
- ✓ N'-6, O'-6 p.1, 81, 101, 113, 127, 137, 151
- ✓ N'-7, O'-7 p.39, 45, 53, 89, 99, 153, 159, 173
- ✓ N-S Trench, East Extension p.7, 17, 31

NOTES ON LEVELS - For a con-  
cordance of levels see below pp. 211 ff  
~~pp. 211 ff~~

<del>N<sup>1</sup>-6, O<sup>1</sup>-6</del>	<del>level 4</del>	<del>p. 1, 81</del>
N <sup>1</sup> -6	level 1	3, 25
✓ N <sup>1</sup> -2	level 3	3, 5
N-S bench, E extension	batt.	7 ff
✓ M <sup>1</sup> -4	level 3	27
✓ L <sup>1</sup> -4	level 3	37, 39
✓ M <sup>1</sup> -3	level 3	39, 45
N <sup>1</sup> -7, O <sup>1</sup> -7	level 2	45
N <sup>1</sup> -7, O <sup>1</sup> -7	level 3	<del>91</del> 91
✓ L <sup>1</sup> -3	l. 4 p. 155, l. 5 p. 159 l. 6 p. 161 level 3	55
✓ M <sup>1</sup> -3	level 4	59
✓ M <sup>1</sup> -4	level 3	65
N <sup>1</sup> -5, O <sup>1</sup> -5	level 4	71
✓ M <sup>1</sup> -2, N <sup>1</sup> -2	level 5 level 3	71 83
✓ M <sup>1</sup> -5	level 3	91
N <sup>1</sup> -6, O <sup>1</sup> -6	level 5 level 6	101 115
M <sup>1</sup> -6	level 2	111
N <sup>1</sup> -8	l. 2, l. 3 p. 163 l. 6 p. 173	l. 4 p. 169 l. 5 p. 171

IV

$N^1-8, O^1-8$  p. 163, 169

$N^1-2, N^1-3, O^1-2, O^1-3$  p. 135, 145, 155, 177

$N^1-1, N^1+1, N^1-2, O^1+1$  p. 167, 175

$N^1-1, O^1-2, O^1-3, P^1-2, P^1-3, O^1-1$  p. 179

$O^1-3, O^1-4, P^1-3, P^1-4, O^1-1$  p. 181, 187, 191

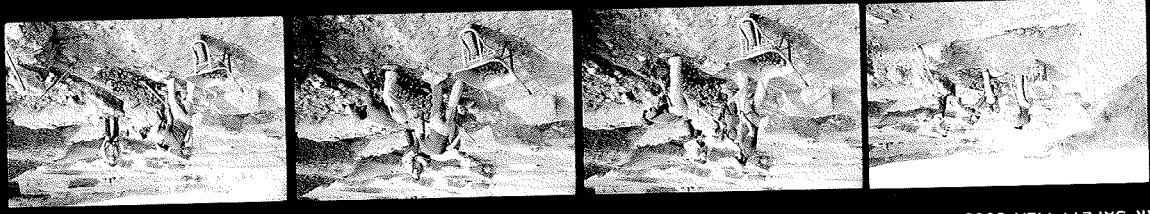
$N^1-4, O^1-4, P^1-4$  p. 185, 195, 199

$N^1-1$  p. 185, 187

$N^1+1$  p. 187

$L^1, H^1-1$  p. 189, 193

$O^1-2$  p. 123, 197



1K SAFETY FILM 5063

KODAK SAFETY FILM 5063

KODAK SAFETY FILM 5063

KODAK SAFETY

→ 28

→ 28A

→ 29

→ 29A

→ 30

→ 30A

→ 31

→ 31A



K SAFETY FILM 5063



KODAK SAFETY FILM 5063



KODAK SAFETY FILM 5063



KODAK SAFETY FILM

→ 0

→ 0A

→ 1

→ 1A

→ 2

→ 2A

→ 2B

→ 2C

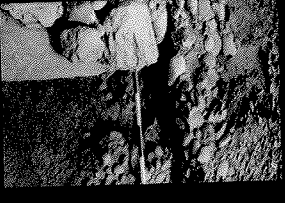
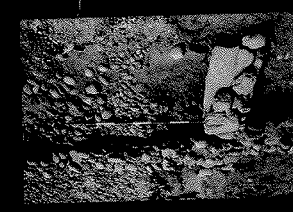


KODAK SAFETY FILM



→ 3

→ 3A



KODAK SAFETY FILM 5063

→ 3A

→ 24

→ 24A

→ 25

→ 25A

→ 26

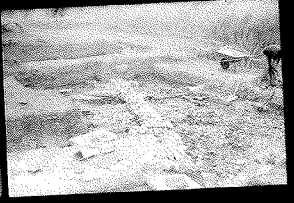
→ 26A

→ 27

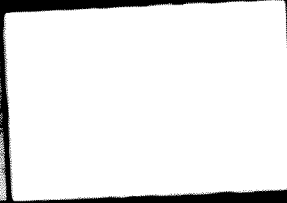
→ 27A

→ 28

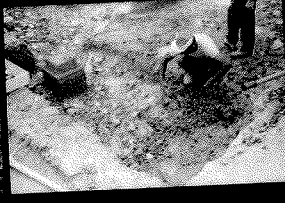
→ 28A



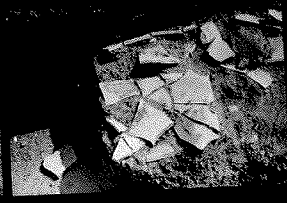
KODAK SAFETY FILM 5063



KODAK SAFETY FILM 5063

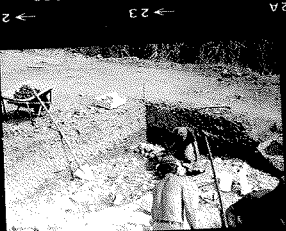


KODAK SAFETY FILM 5063



→ 22

→ 22A



→ 23

→ 23A



AFETY FILM 5063



KODAK SAFETY FILM 5063

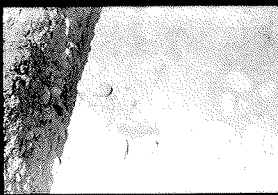


KODAK SAFETY FILM 5063

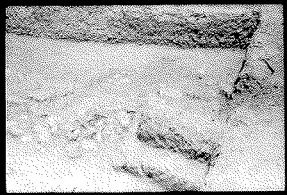


→ 17

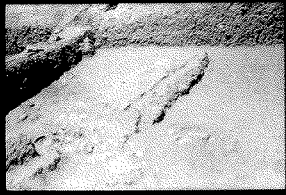
KODAK SAFETY FILM 5063



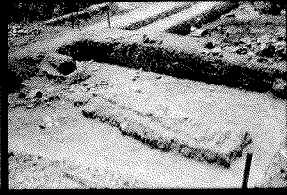
KODAK SAFETY FILM 5063



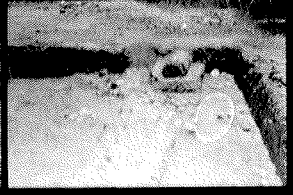
KODAK SAFETY FILM 5063



KODAK SAFETY FILM 5063



ETY FILM 5063



KODAK S

→ 13A

→ 14

→ 14A

→ 15

→ 15A

→ 16

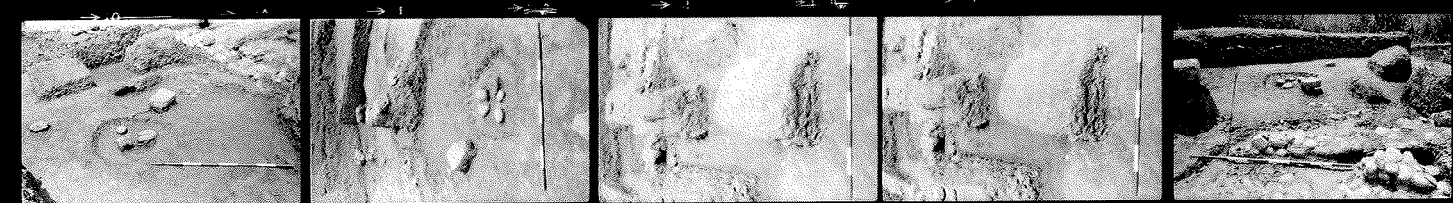
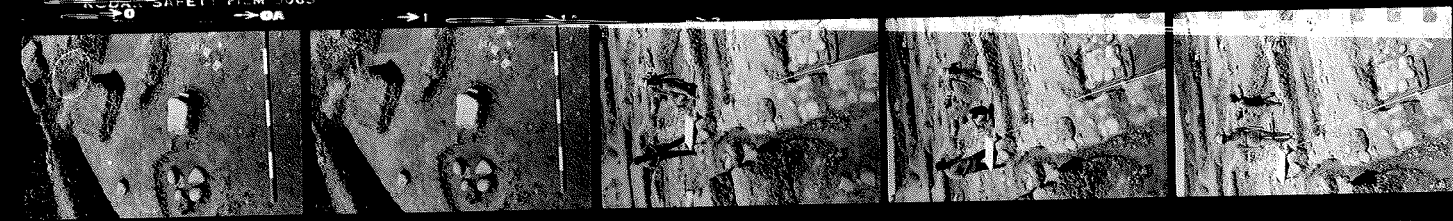
→ 16A

→ 17

→ 17A

→ 18

→ 18A





# Elevations of Canal Area

109

June 22

height of instrument = 70.0 from conglomerate blocks in T.R.E. (0 point) ~~approximately~~

0'-3

1. P' - 3

Surface S.W. corner

— 1.26

0 point for west ions

2. S.W. bottom

level 4

— 1.98

3. S end of conglomerate wall  
(level 1, bottom) — 1.46

4. N. end of same — 1.23

5. large projecting conglomerate block on line of N.S. wall — 1.22

DATA  $\Delta\Delta' - 17'$   
 POSTA  $\Delta, \Delta' - 1; 1$   
 (9, 0,00)

taxonomia  
 (9, 1,18)

0.00



	1	-	18,1	4.	-0.63
	2	-	22,7		-1.09
	3	-	24,6		-1.28
(2,2)	4	-	29,2		-1.74
(2,4)	5	-	29,9		-1.81
(2,6)	6	-	30,9		-1.86
(2,3)	7	-	31,4		-2.01
(2,6)	8	-	30,1		-1.33
(2,7)	9	-	28,1		-1.13
(1,4)	10	-	19,3		-0.75
(3,2)	11	-	24,8		-1.30
(3,2)	12	-	35		-2.28
(3)	13	-	35,4		-2.32
(31)	14	-	395		-2.73
(22)	15	-	390		-2.68
(28)	16	-	369		-2.47
(25)	17	-	367		-2.45
(22)	18	-	364		-2.42
(25)	19	-	404		-2.82
(22)	20	-	402		-2.80
(21)	21	-	385		-2.63
(20)	22	-	356		-2.34
(23)	23	-	343		-2.21
(19)	24	-	372		-2.50
(20)	25	-	392		-2.70
(14)	26	-	352		-2.34
(16)	27	-	359		-2.41
(13)	28	-	302		-1.84
(13)	29	-	312		-1.94

per ogni livello oltre 32  
 per i primi 20 tolliamo  
 1 cm.

~~-2.73~~

395  
 28  
 17

(14) →

→

(16) 30 306  
 (155) 31 246<sup>5</sup>

1.88  
 - 1.28<sup>5</sup>

Fabbrica

2

9-102 POSTA (B) (14)

9.

- 3.20

(-320 + 102) = -2

20.5  
 20.8

(25)	32	-125 <sup>5</sup>	- 3.43 <sup>5</sup>
(6)	33	231	- 4.49
(55)	34	210 <sup>5</sup>	- 4.28 <sup>5</sup>
(65)	35	249	- 4.67
(45)	36	187	- 4.05
	37	204 <sup>5</sup>	- 4.22 <sup>5</sup>
(11)	38	343	- 5.61
(10)	39	307	- 5.25
(10)	40	331	- 5.49
(12)	41	361	- 5.79
(10)	42	382	- 6.00
	43	360	- 5.78
	44	181	- 3.49
	45	153	- 3.71
(10)	46	129 <sup>5</sup>	- 3.47 <sup>5</sup>
(12)	47	138	- 3.56
(115)	48	95	- 3.13
(15)	49	161	- 3.79
(135)	50	200	- 4.18
(18)	51	82	- 3.00
(19)	52	191	- 4.09
(14)	53	281	- 4.49
(21)	54	346	- 5.64
(20)	55	131	- 3.49

POSTA

(C)

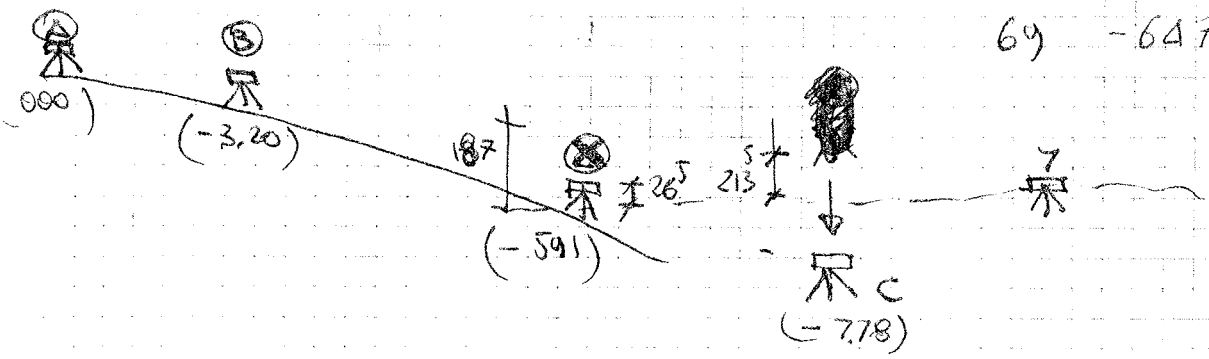
= 778

Cancel

(3)

607

1	- 8.65 <sup>5</sup>	23	- 8.59 <sup>5</sup>	45	- 8.56 <sup>5</sup>
2	- 8.61 <sup>5</sup>	24	- 8.76 <sup>5</sup>	46	- 8.74 <sup>5</sup>
3	- 8.96 <sup>5</sup>	25	- 8.83 <sup>5</sup>	47	- 9.09
4	- 8.58	26	- 8.77	48	- 8.79 <sup>5</sup>
5	- 8.06	27	- 9.12 <sup>5</sup>	49	- 9.01 <sup>5</sup>
6	- 7.46	28	- 9.00	50	- 8.42 <sup>5</sup>
7	- 7.89	29	- 8.83	51	- 8.93
8	- 8.27	30	- 9.03 <sup>5</sup>	52	- 8.79
9	- 7.71	31	- 9.23	53	- 9.05
10	- 7.65	32	- 9.05	54	- 8.60 <sup>5</sup>
11	- 7.59 <sup>5</sup>	33	- 9.08	55	- 6.85
12	- 7.85	34	- 9.03	56	- 6.65
13	- 7.34 <sup>5</sup>	35	- 9.25	57	- 6.58
14	- 6.74 <sup>5</sup>	36	- 8.64 <sup>5</sup>	58	- 6.95 <sup>5</sup>
15	- 7.13 <sup>5</sup>	37	- 8.77	59	- 6.81
16	- 7.87 <sup>5</sup>	38	- 8.24 <sup>5</sup>	60	- 7.73 <sup>5</sup>
17	- 8.22 <sup>5</sup>	39	- 8.61 <sup>5</sup>	61	- 7.12 <sup>5</sup>
18	- 8.20	40	- 9.10 <sup>5</sup>	62	- 7.15 <sup>5</sup>
19	- 8.26	41	- 8.68 <sup>5</sup>	63	- 7.09
20	- 8.24 <sup>5</sup>	42	- 8.60	64	- 7.06
21	- 8.45 <sup>5</sup>	43	- 8.94	65	- 6.89
22	- 8.50	44	- 8.69 <sup>5</sup>	66	- 7.73 <sup>5</sup>
				67	- 7.17 <sup>5</sup>
				68	- 6.87
				69	- 6.47



70 - 689  
71 - 7225  
72 - 763  
73 - 876  
74 - 878  
75 - 938  
76 - 948

Canal



///

## Canal Elevation 1976

6. W. end of field stone wall  
(level 2, bottom) - 1.69

7. E. end of same - 1.90

8. field stone pavement, north  
(level 3, bottom) - 1.62

9. S. same - 1.84

10. Fieldstone wall  
under conglomerate wall north - 1.62

11. Pottery deposits south of field  
stone wall, went to W  
(photo graphed) - 1.76

12. level of ~~surface~~ rubble floor  
(level 4, bottom), north - 1.76

13. South, same

= 1.92 1/2

14. P'-H = 1.08

15. O'-H = 0.54

O'-2

1. level of rubble pavement,

South, east corner

= 1.58

2. level, same

= 1.50

3. level of granite block on

east wall, north, top

= 1.36

3. height of block

Top of block corresponds to upper

level of gravel bottom, to lower

level of gravel

Upper level of gravel is same level

as pavement in O'-2

4. Level of gravel pavement at  
N.E. corner

115  
- 1.28

5. Level level of gravel, N.E. corner

- 1.54

6. S.E. corner

- 1.70

difference in level between the

two gravel pavements in N.E. and  
S.E. corners

7. E. W. field stone wall at east wall  
of trench

- 1.70

8. E. W. field stone wall where it  
interacts with N.S. field stone  
wall

- 1.65

9. E. W. field stone wall where North  
street is under

- 1.71

10. N.S. field stone wall just north of  
intersection with E. W.

- 1.64



11. N. S. fields tone wall just  
south of E. W. 117  
- 1.81  
- 1.82

12. Roof tiles in southern wall  
of trench top

13. highest level of pavement in room  
alpha (just south of E. W. wall) - 1.86

14. highest level of pavement in room  
gamma - 1.86

15. highest level of pavement in delta - 1.86  
16. P1-2 - 1.48

C' - 1

1. Top of N. S. wall, north section - 1.54

2. same, southern section - 1.58

3. top pilaster capital  
height of capital - 1.67

Height of bottom of capital above  
stone floor (casts on clay)

119

4. fluid stone pavement

-1.87

5. stake P1-1

-1.55

6. stake O1-1

-1.21

P1-2

1. Top of western conglomerate block  
(beginning to the "corner" pair

-1.48

Depth to bottom, height above  
fluid stone pavement

2. level of pavement

-2.2

South Bank Canal S. 4

1. N.W. corner, conglomerate wall

-1.93

2. N. end, tile wall

-1.98

## Elevations

1/21

from reconfigurable block in Trench I, marked with orange X  
height of measurement +.90

### Wall IAU

1. W. wall trench

- .38

2. S.E. corner

- 0.32

3. midpoint

- 0.43

4. S.W. end

(corner / photo)

~~- .54~~ - .54

### Rite

1. Square block in middle

2. S. end

- .94

Sigma

- 1. N. wall trench - .32
- 2. midpoint - .40
- 3. S.E. corner - .53

Zeta

- 1. East wind - .85
- 2. West end - .87

Heta

- 1. East wind - .89
- 2. West end - .87

"Zeta W"

Chamber TAU and ZETA

- 1. N. end, top - .90
- 2. bottom
- 3. S. end, top
- 4. bottom

(between ZETA and THETA)

125

1. N. end, top  
bottom

3. midpoint, top

4. bottom

"North South Stone Wall":

North extension, North, just south of large conglomerate stair (con. zinc point)

1. approx. same as midpoint of ETA

2. same, south (just south of N1-2  
South extension (after interruption)) -1.26

3. N. end, top

-1.25

4. S. end, top

-1.45

Field stone wall which angles under "N.S. Stone wall" with spur in E.W. direction

1. at north end

-1.68

12/3

2. at corner (highest point)

-1.50

Wall which seems to make an angle  
within NS stone wall, both extension  
to the west.

West end

-1.30

Apparent end of NS stone wall in P1-1 where  
it intersects EW wall

-1.78

Principal line of WS stakes from A'-1

129

(Stake)

A'-1 0

B'-1 - .40

C'-1 - .72

D'-1 - .89

E'-1 - 1.23

F'-1 - 1.90

H'-1 - 3.30

I'-1

J'-1

K'-1 0 - 6.91

L'-1 - .40 - 7.31

M'-1 - .98 - 7.89

N'-1 - 1.33 - 8.24

O'-1 - 2.39 - 9.30

P'-1 - 2.93 - 9.84

a) from H'-1 to K'-1 - 3.61

b) height of instrument + .89

c) from K'-1 to conglomerate

stake via TRF 1975 (1976)

low zero point X in orange

- 9.97

- 3.06

d) height of instrument + 9.5

Farmhouse

Pizzica 1976

HILLTOP 76



28 May.

work began at 7 am, After removing weeds, level 1 in NW quarter of D112 was excavated.

Pottery from level 1 - coarseware, small amount.

Level 1 was about 40 cm deep at the north and sloped to 30 cm towards the south, measured from the side of the trench.

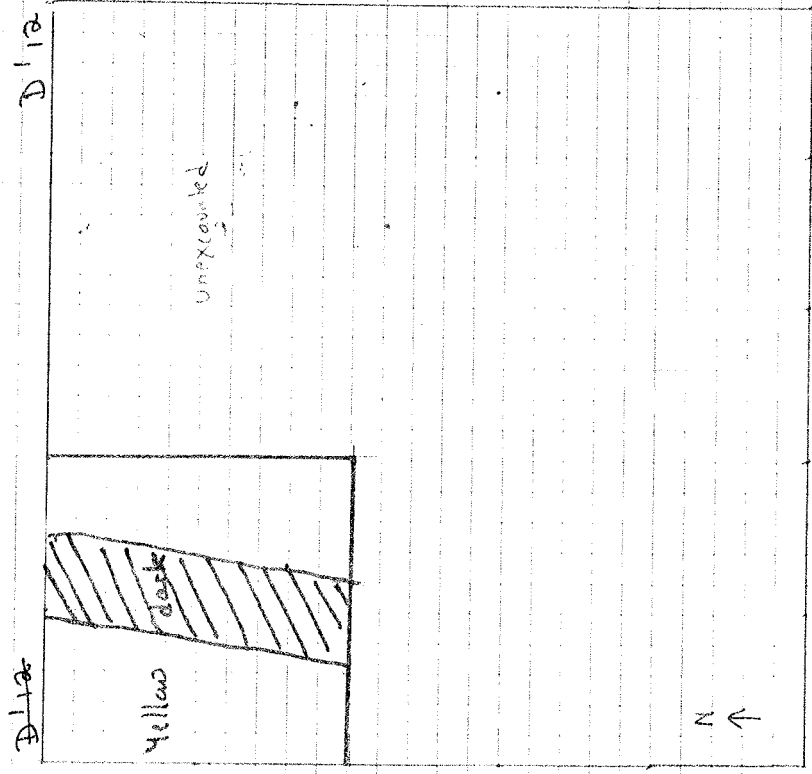
Level 2 was made up of 2 types of earth - the same dark earth as in level 1, and, on either side of this dark earth, a much yellower earth 1/3' dark brown. This dark earth indicates the existence of a wall which seems to align with wall of (?) west, which runs approximately N-S, discovered in 1975.

The width of the dark earth is about 50 cm.

photographs taken.

No ceramic finds from level 2.

The area covered by smooth field stones around the east of the kiln was cleaned to level 2. This area is due west of the D112, also the area north of D112 was cleaned to remove soil accumulated over the winter.

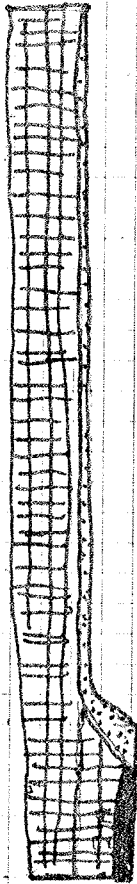





Dark = 3/3 104a Dark brown  
 Yellow = 5/3 104b Brown

N-S Section, E'14, West Face



E'14



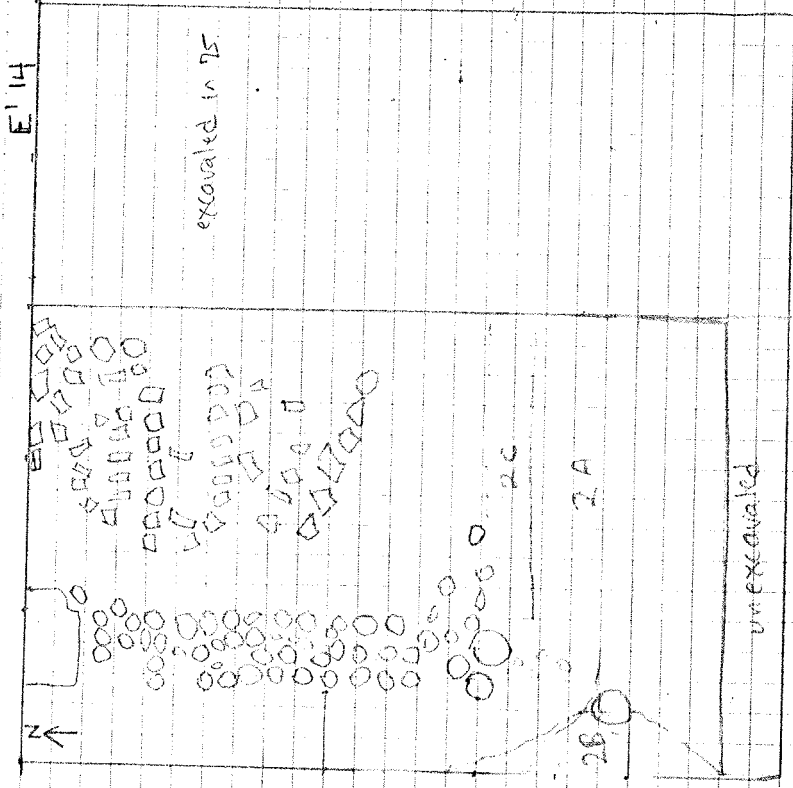
-  = level 1, 4/3 10 yr dark brown earth.
-  = level 2A 4/3 10 yr dark brown earth.
-  = level 2B 5/3 10 yr brown.

Note that Section does not correspond to the meters - it was not marked at the time of excavation. That level 2B, the level above the wall and beside it existed. The excavation of this section was confusing + needs clarification.

kidn →

S

May 28.



Level 1, plowed earth, removed in South part of E'114.  
 Pottery - small amount of coarse ware  
 Find - level 1 - small bronze coin.  
 76.13P  
 76.11M  
 76.2M (mail)

May 31.

level 1 also being excavated in N quarter of E'114, South of wall of south? excavation in 1975. This is the wall composed of large squared blocks which runs E-W and ⊥ to wall of west(?) in D114.

Find - small piece of obsidian - level 1.

A continuation of wall of west found in NW of E'114. Also a small tile area + red earth found in NE East of ⊥ The new part of wall of west.

photographs taken.

6/14 2.5g light yellowish brown

76.14P level 2, a yellow earth found to west of wall in E'114. level of level 2 pottery - under tile area to the south + helps level of top of wall. perhaps there is another wall ⊥ to wall of west - since there seems to be an angle to this wall quite close to end of tile area at 0.200 M from N-S wall.

after further excavation under the wall level 1 gravel and unexcavated found to the west. 70 X 35 X 14. The rest of the wall around the kidn and a few

The continuation of the wall in E'114 consists of one limestone block at the North, 70 X 35 X 14. The rest of the wall is composed of small (10-20 cm) smooth oval stones (as found) around the kidn and a few small irregular limestone. AT approximately 2.50 M from the ⊥ wall there is a piece of conglomerate. This tile area East of new W-S wall appear a smooth oval stone + a piece of conglomerate. This tile area East of new W-S wall is interesting - there seems to be a pattern of horizontal and vertical tiles.

E 114.

continued.

7

we returned to SW quarter of E 114 + began to excavate again. level 1 - plowed earth, being removed. In line with JS discovered May 28) to the south are a few small stones. These stones, if they be part of the wall, extend it approximately 65 cm to the S. But since they are smaller than the majority of stones used in the construction of wall JS, they may not be part of it. About 10 cm SW of this line of stones is a large round field stone, 5.25 cm in diameter.

Dark level 1 earth continues at SE. Coarseware base + amphora base etc found in level 2, at line of wall, in hard brown pebbly earth. 76.106 - stone vessel.

76.32P Once level remained - level 2 is seen to consist of 3 types of soil. (see plan) 2A - Dark brown earth like that of plowed earth found in S + SE.

2B - lighter brown gravelly earth <sup>south</sup> west of this. This 2B earth is also found west of line of wall.

76.12P

Find - Mediterranean stone in 2B west of wall JS line - indicates a mixed level or intrusion. Pottery labelled level 2A + level 2B.

Note - black flint plate? fragment found in level 2A, E of line of wall JS.

(6/4 2.54)

2C - This third type - is the hard yellow earth, claylike in consistency. That is found east of line of wall JS. This is the same type of earth found under the tiles in the NE of E 114 (previously excavated - 5.28 - 5.31) + west of wall JS in the N of E 114.

Also in level 2A - at the line of wall JS - large stones - perhaps fallen from JS.

Levels 2A + 2B seem to run in bands. 2B to the <sup>south</sup> west of 2A with a small area of gravelly yellow earth to the west of line of wall JS. This is not at all clear.

June 1 9

North of bla - B113 - B114.

The N-S baulk between B113 + B114 is being removed - level 1 - plowed earth, coarse ware.

The N-S baulk between B112 + B113 is being removed. Level 1 - plowed earth.

The East 1/2 of B113, excavated to about 35 cm in 1975 is again excavated to remove level 1.

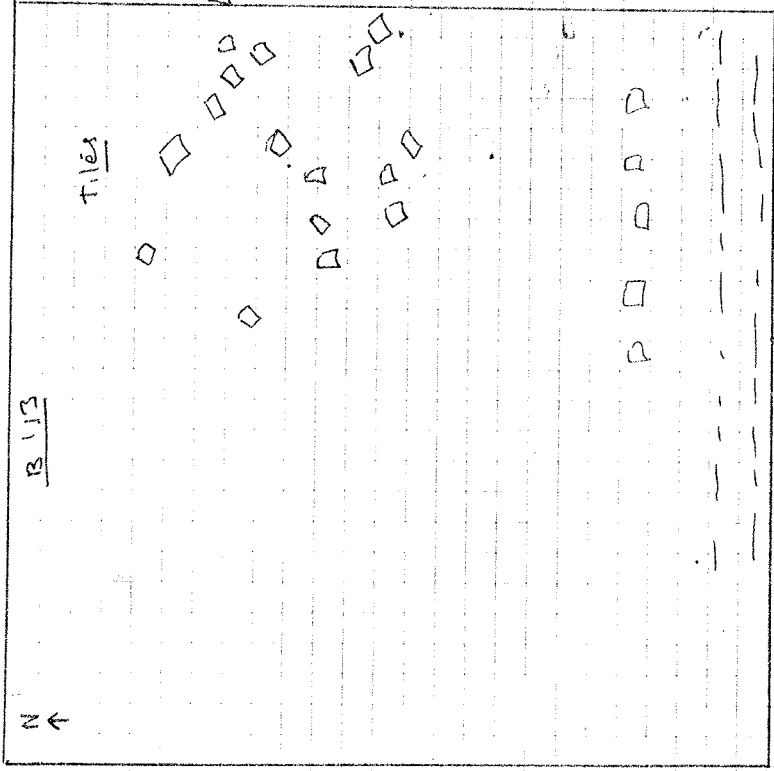
under level 1 in this E 1/2 of B113 - stable fall.

pottery from this level 1 on top of tiles placed in bay labelled B113 E112 + baulk between B112 + B113 - level 1.

Bones also found.

The E-W baulk between C114 + C113, B113, B114 excavated also - level 1 removed - plowed earth.

level 1 in N-S baulk between B113 + B114 is deeper at the north.



--- = dark lines

June 2.

Cleaning of level 1 in E 1/2 of B113 (including N-S B112 + B113 baulk). A row of tiles south of tiles found yesterday - a revealed. This row seems to parallel the 2 dark lines excavated to the south of B113 - C113 - E-W baulk area) which seem associated with the fill and the frebricks which are also aligned with these dark lines.

June 3

The Tiles between the 2 parallel rows of tile at the N entrance to the kiln are removed. These are the tiles at the level of the roof. The large blocks at the N end of the kiln.

The dark earth under the tiles ~~is~~ removed (level 1).  
 more tiles, very large field stones are removed. As large or larger than the field stones used in construction of walls? are the circumferential path? around the kiln.

The tile rows, which run parallel N-S from the kiln, now are found to consist of several layers (at least) of tiles which form a tile wall. (Some made up as kiln. This wall at present is 20 cm in depth from the top of the tiles.

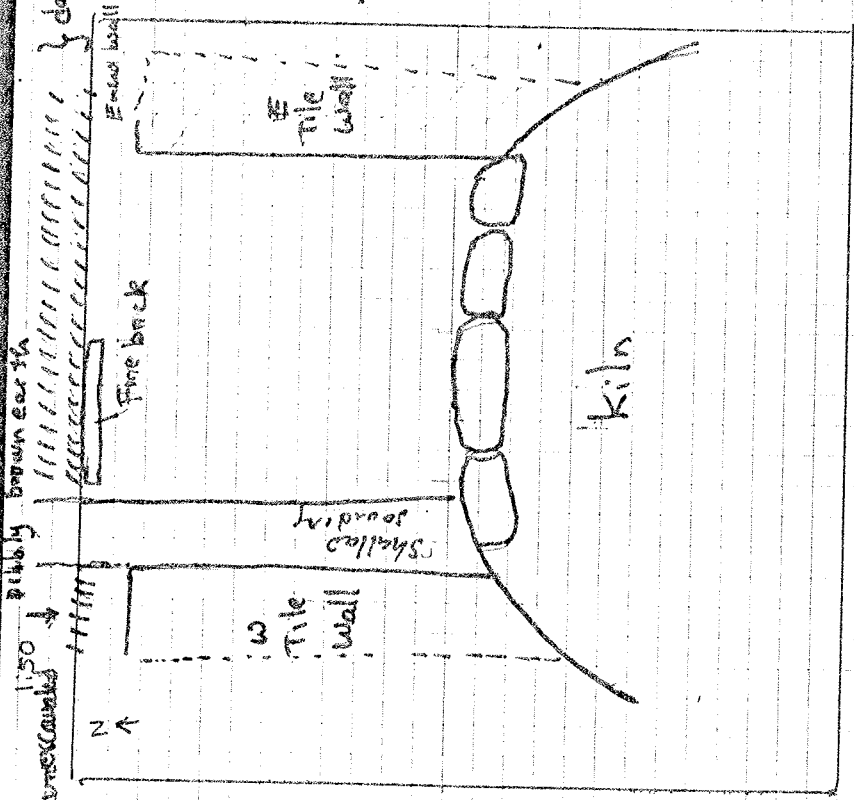
Around the large blocks of the tiles is found very dark red-brown earth pottery from this level - coarse ware.

7614p level 2 - sandier fines light brown earth, at the level where the Tile wall ends. c. 25 cm below the tile surface. Pottery from this level includes a rim.

The area excavated at level 2 is extended N up to line of fire-bricks (about 20 cm South of this line.)

Pieces of glass found in level 2 near west tile wall, including a large rim fragment.

As we go down in level 2 - fewer tiles + large stones. Material seems fairly consistent - thin walled pottery, coarse ware.

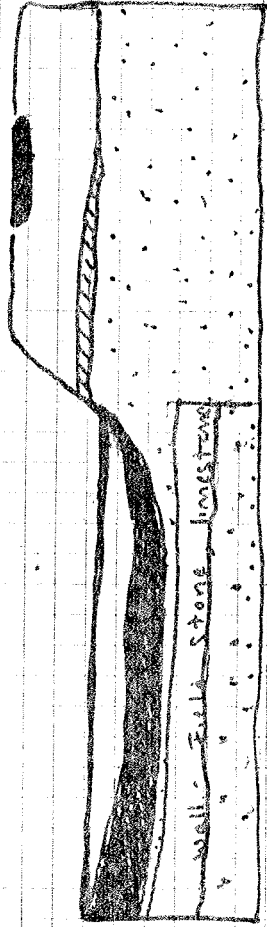


125

CL13

N-S Section above West Tilt wall (East)

→ N



- Dark earth 4 to 10 ft dark grayish brown
- yellow claylike 6/4 2.5 ft light yellowish brown
- brown pebbly earth 4/3 10 ft dark yellowish brown
- Sandy yellow earth with small stones



C113 continued.

June 4. The E-W baulk between C113 + B113 where we excavated yesterday is being straightened. The North 1/4 of C113 which includes the NE portion of the baulk between C113 and B113 is being excavated to see if the west tile wall of kiln forms an angle with an E-W wall, known only as a dark band of extra visible in the E-W baulk of C113, C14 B113, N114 and as a wall near East Tile wall.

What we seem to have with the 2 tile walls which run N-S forming an rt angle with East west walls, leaving the area between the walls as an entrance.

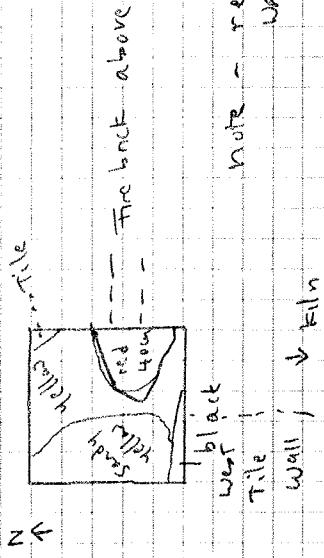
We are also trying to determine the relation of the fire bricks north of an L to the tile walls.

After the E-W baulk between C113 and B113 is taken down to the level of the top of the tile walls, photos taken.

Then this N 1/4 of C113 is excavated:

level - E-W dark line is visible in section running through yellow level.  
 also dark line visible at height of tile wall.  
 red in earth visible in line of fire-bricks + tile wall.  
 yellow + dark brown soil fragments in line with firebricks. otherwise hard  
 AT about 13 cm from fire-brick level - The red earth is visible in East 1/4 but not in west where the soil is yellow + sandy. The black line is no longer visible extent in extreme south east.

TOP plan - 13 cm 1M x 1M Level 1



NOTE - red earth stops almost at line of west tile wall,



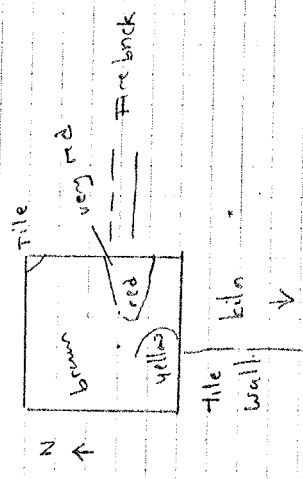
June 4 C113

15

In the next batch c. 5 cm - The earth seems darker brown less sandy, more like earth at level 2. In C113 excavated yesterday between the walls.

level 2 - Top Plan 18 cm.

76.63P



level 3 - earth seems uniformly brown + pebbly over entire area. c. 21 cm.  
 here black shale piece found.

level 4 - Same soil as in level 3. 1 piece of pottery - combined with level 3 pottery. We are now at the level reach yesterday in C113 area bounded by the walls.

76.74P

has a new sounding (c. 50 cm in width) made along side of west tile wall - The brown from this sounding (level 2) - seems almost sterile, but a piece of black shale found.

76.114

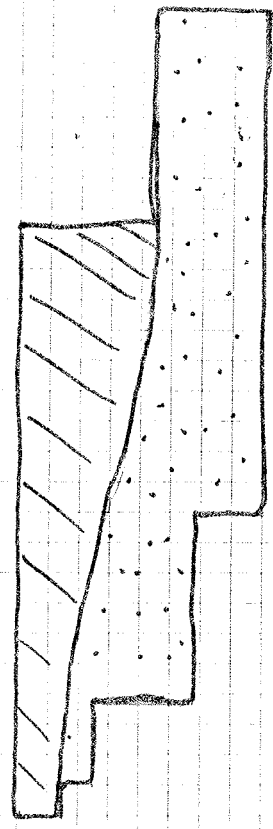
June 5 - excavated deeper than by me -

100

125

Sounding A E-W section N face

N  
A



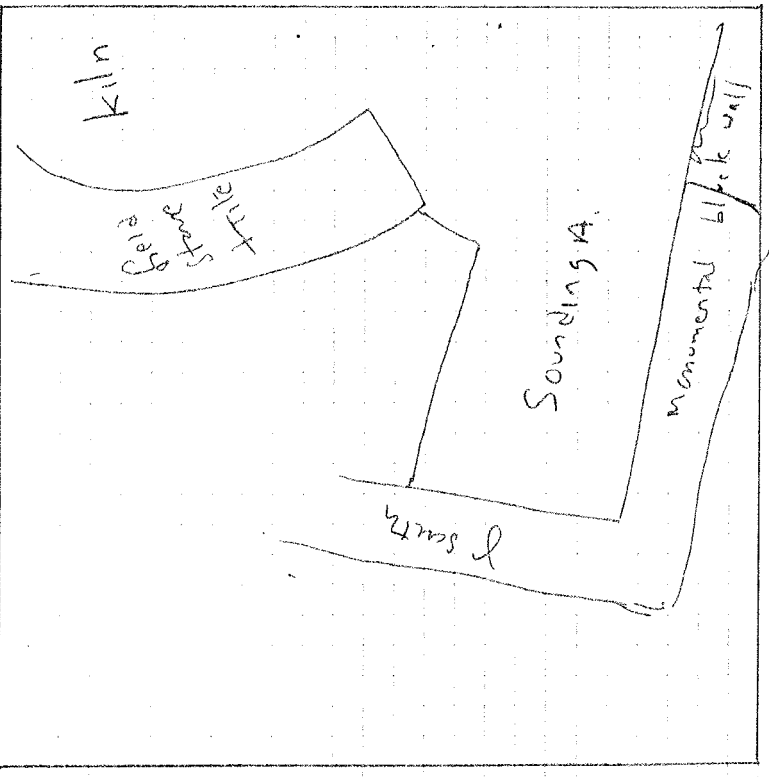
/// = 4/4 dk yellowish brown 1048

... = 6/4 lgt yellow brown 2.59

1:50

D114

June 4. 1974



In SE of D114 a sounding, Sounding A made. This in area of kiln bounded by monumental wall of large blocks which form a rt. A to JS. This area was excavated to about 25 cm below tile + fieldstone path level of kiln in 1973. This rectanglular was excavated deeper.

76.62P level 1 - hard light brown earth, no tiles little material at 3 of stone yellow clay with large white flecks found. This white earth is not found at the earth ~~east~~ near the right A of the 2 walls. Out in E-W direction it extends about 1M. ceramic material only found in brown earth.

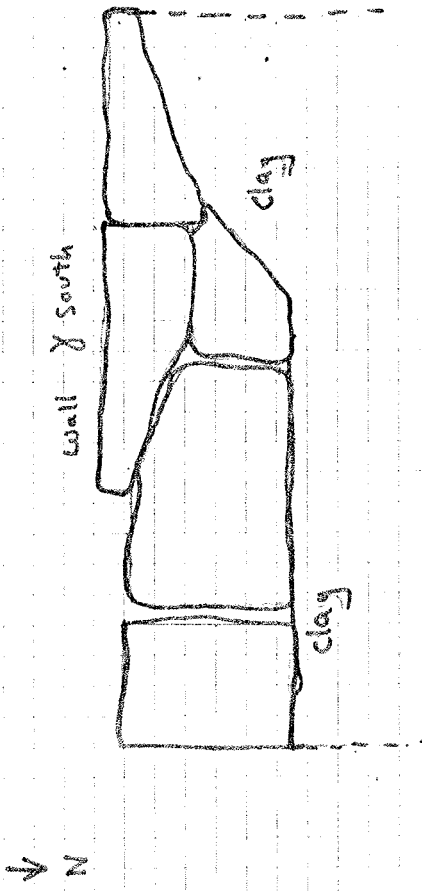
This white clay is virgin clay - quite deep. The brown earth contains few rocks or pebbles + is quite hard. The brown earth, 60 cm from top of wall is disappearing + the white clay is appearing in other words. The white clay is deepest at west. This seem to be a clay pit bounded by these walls.

The clay begins 20 cm below the wall in the west + is found at least to a depth of 90 cm in the east where we stopped digging.

The earth near the W side of the E-W monumental block wall is now removed except for about 50 cm at the west near 76.62P. From this earth - level 1 - material - the dark earth, 76.62P, 76.76S.

This monumental wall I to JS is now shown to consist of at least 2 courses of large limestone blocks.

Sounding A E-W Section South Face



clay = 6/4 2.5 y - light yellow brown

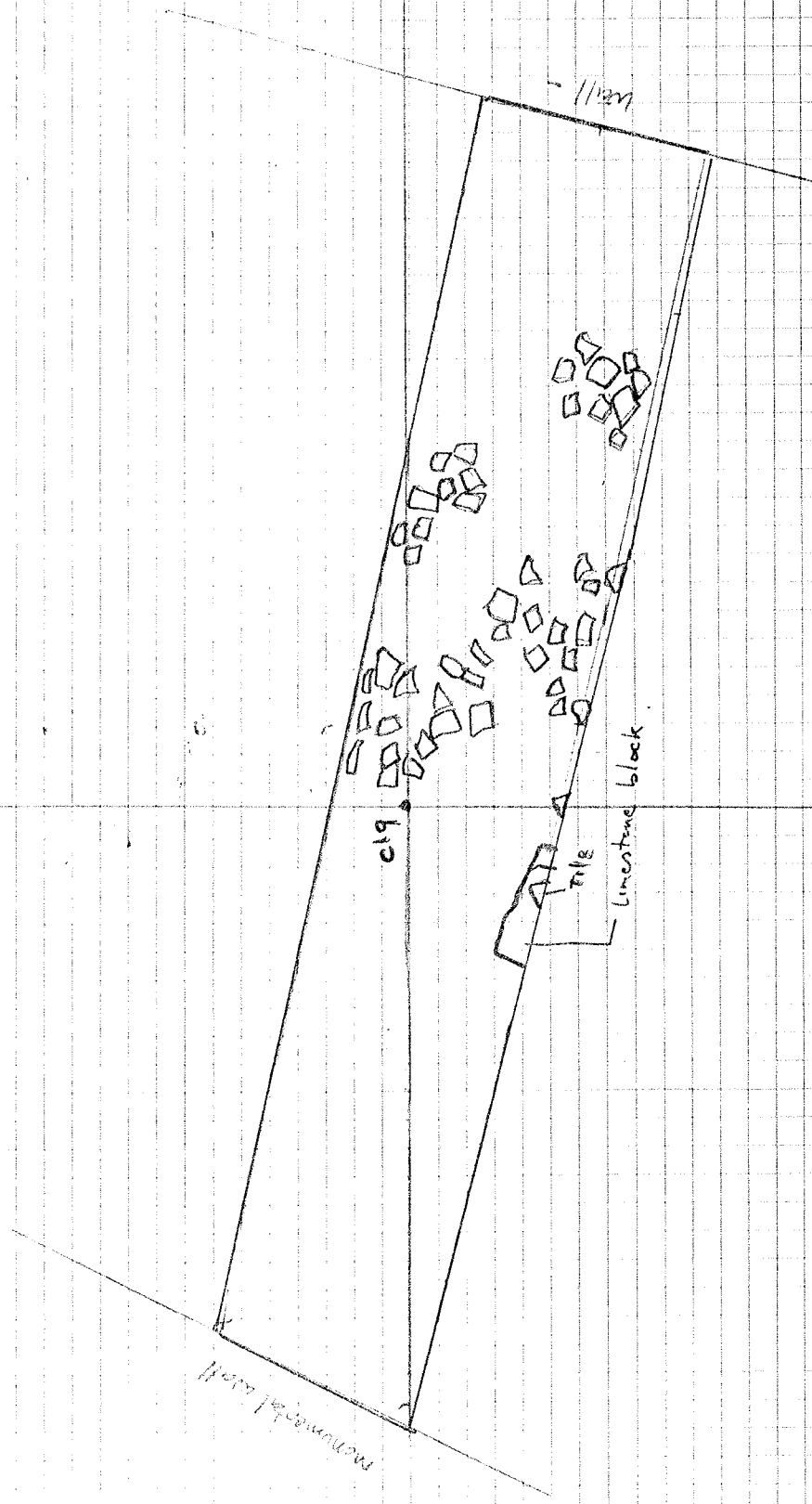
1:50

Sounding B (c'9)

19

W

June 7



June 7.

Sounding B. (C'9)

2

This sounding is  $\perp$  to the N-S wall of monumental blocks of inside the East wing of the U-shaped building. It is 150 x 80 cm + runs to the monumental wall parallel to the monumental wall at the east.

This sounding includes about 2M of soil undug in 1975 + then goes into earth which had about 10 cm of level removed in 1975. The journey was E-W from the monumental block wall in the E-W baulk of C'9 and B'9 and then into the North of C'8.

Level 1 - plowed earth - Tiles, coarse ware. This sounding is to clarify 1975 stratigraphy. In the east, where c. 25 cm of level 1 was removed in 1975 sand a sounding was made at that time, the sounding was filled in with sand, about 180M west of wall.

76.91P Level Material - fragment red sludge a rubble + linear pattern near tiles in the 180M from East wall.

Level 2 - c. 35 cm from surface - soil a little sayer - above + at level of tiles, This is the level a piece of black sludge base found in this level. grey ware rim, black sludge, mixed

Level 2 soil starts at c. 35 cm from the surface in the east but lower (about 10 cm) at the west where it becomes very hard to dig with level 1 from level 2.

At about 3 meters from the monumental block wall (i.e. east of it) a large piece of limestone damaged, visible in the south scarp. Tiles are in situ above it. Is this a wall?

under level 2 in east - a tile fall.

Level 3 - c. 60 cm from N scarp - brown, sandy soil, under level of tiles, at level of Stone "wall".

Note - tile fall in same line as limestone block.

76.67P Pottery - coarse ware

June 7 Sounding B (C19)

23

level 4 - c. 70 cm below N scarp surface. Brown earth, dry, gravelly.

76.68P Material - black slaps, coarseware

Find - 4m c. Black <sup>painted</sup> slip fragment - lower 70% of hole made with trowel/basket,

76.97P 5 1/2 x 9 cm. found about 80 cm west of tile fall area.

note the area of tile fall near dug yet - 10 levels on occur between monumental block wall and tile fall.

Find

76.70T 10 cm ~~to~~ east of monumental block wall - 70 cm from N surface near paved decoration - fragment of a Roman lamp - 5 cm wide, with nipple +

76.69T Find - Terracotta Pygmy Head - 75 cm depth 1 meter east of monumental wall.

Large tile found in level 4, same mixture of material as in levels 2+3 but more shaly + of a better quality.

For section of sounding B, see sounding C.

C18 South and C19

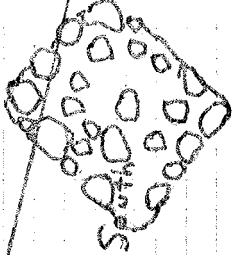
1.50



Monumental wall

C19

Sounding B



C19 South

C18 South

Wall



C18 South and C19 (SE)

29

The area excavated in sounding B was extended to the south, incorporating an area in C18 and C19 about 2.70 x 7 M.  
Level 1 - plowed earth.

Level 2 - Jay earth as in sounding B. Tiles not yet found here.

June 8

76.78P Find level 1 - bronze coin.  
76.79B ground slopes to South.

Level 2 excavated in NE - dense gray soil. Towards the west, level 2 very hard to distinguish - almost the same color as level 1, but more compact. Level 2 seems associated with tile fall - Thus in places where there is no tile fall, it is not surprising not to find a very recognizable level 2.5

Level 3 - brown earth, slightly sandy, divided into level 3 west 1/2 and level 3 east 1/2, the "wall" being the dividing point.

76.133P Level 3 west 1/2 - lowweight found, circular with hole, found 1 M from monumental wall.  
76.84M Level 3 material - mixed brick, Roman and coarseware.

76.81P Level 3, E 1/2 found at a higher level than level 3 west 1/2 because the ground slopes to the west.

The "wall" found yesterday is sounding B continues to the south about 120 M + then seems to stop. Tiles found on this wall. Dimensions of wall:

76.86P Level 4 found in west 1/2. Sandy brown earth  
76.87P

~~76.88P~~ Level 3 in E 1/2 becoming harder with gravel under level of tile. Material - gray 1/4 1/4 coarse ware. ~~It has~~ with the new "wall" and also to the east are small pieces of limestone,

June 8, 1946

C18 south, C19

29

76.85P wall in C18 S<sup>19</sup> at level 3 material in this area very little. labelled 'material from line f' + very sparsely dry soil.

in the west 1/2, level 3 continues at S. longer than in the north.

As we go down in the east. The earth is cherty, becoming more sparsely and dry especially in the north - but so in the south, but perhaps this is because the south face was exposed to the recent rain.

76.82P Find - black shale fragment decorated with a pattern in level 7, east 1/2, in gravel area to the north.

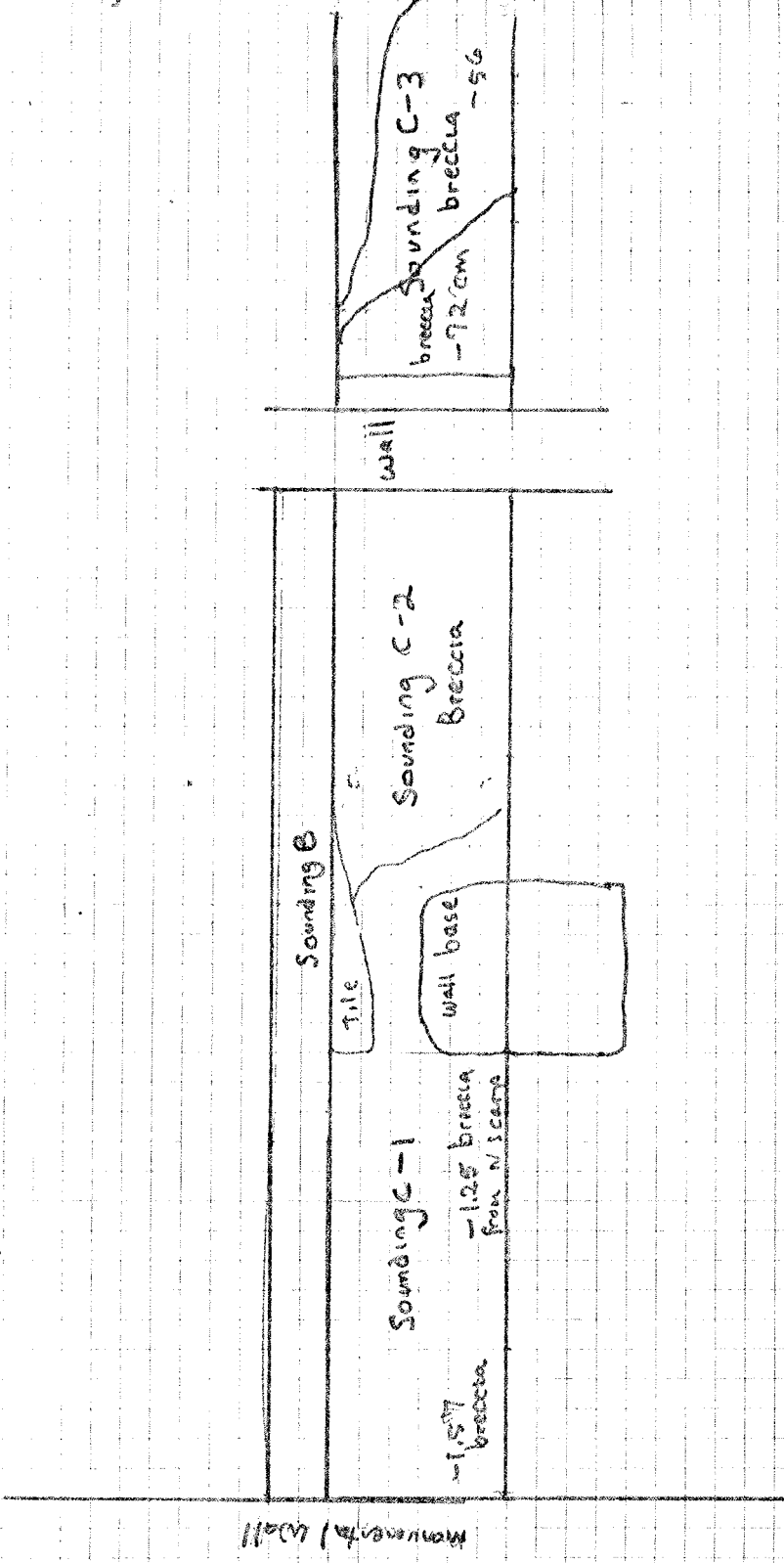
level 3 still found in the east as the hill slopes to west and south. in west 1/2, level 3 almost all removed except very close to line of the wall in the north.

in level 4 in west 1/2 - near monumental block wall. tiles in situ + several large limestone fragments.

76.88P Find - level 4 - small thin fragment - black shale with pattern.

# Top plan - Sounding C - after excavation

N ↑



June 8.

Sounding C was started. This sounding is 1.20M  
 + runs E-W, primarily through squares C18,  
 C19, C17. This sounding is divided into 3 sections  
 from the west, next to the monumental wall, C-1,  
 which continues (although 30 cm smaller in N-S  
 direction) to go down from sounding B.  
 in C-1, The material begins at level 5.  
 This section extends east from the monumental wall  
 about 3 M to the wall-base discovered in sounding  
 B.

76.93P C-2 is east of C-1 and includes the wall base.  
 This section cuts through the tile fall and then  
 begins in level 3. This section ends at the wall  
 at the east.

C-3 is ~~at the~~ east of C-2 and is bounded  
 by the wall at the west and another wall, measured  
 in 7.5 at the east. In this section, excavation  
 begins at level 1.

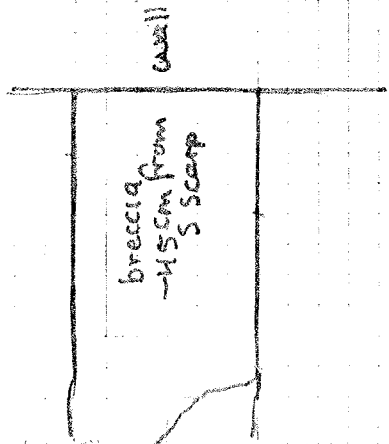
76.90P C-1 - level 5 - reddish brown sandy soil. Same type  
 of material as in level 4. Some tiles, some black  
 stage, including a handle.

perhaps there is a gravel surface next to the monumental  
 wall in level 4 - but this is not clear.

Tiles saved C-1, level 5. ~~Level 2~~  
 from the tile fall which was removed in C-2,  
 Tiles were saved.

76.94P Level 1 earth in C-3, plowed earth.  
 76.95P level 2 in C-3, brown fairly compact earth  
 with tiles.

~~76.96P C-3 level 3 - brown hard earth, first bedded  
 76.96P ~~the east.~~~~



Wall

breccia  
-45cm from  
S Scarp

Sounding C - Continued  
June 8.

33

C-2 level 3, quite deep. A 40 cm

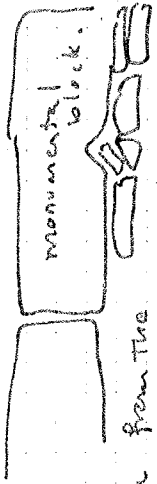
C-1, level 6 - same color as 5, but less gravel, more clay like. No large tile fragments.

76.89P  
76.91P

From the 20 cm of earth left near the monument at wall in C-1, level 4 material remained and also level 5. These include Greek material.

June 9.

C-1 In cleaning the monumental wall, it is clear that it is set upon a lower foundation course of medium stones and tiles. (Context of stones) in a manner of construction simpler than other walls in the site. Note place where accommodation was made for an A-shaped cut in the rock by the use of a rock + tile to fill the gap.



~~76.89P~~ 76.91P  
76.99P  
76.100P

C-1. Level 6 - 35 cm from the top of the monumental wall - almost at level of termination of wall.

Material next to wall in level 6 kept separate. 76.105P, 76.106P

in east, near square wall - base - darker earth with gravel <sup>very thin</sup> before breccia is reached in west at - 1.57 from the N Scar. <sup>displayer</sup> of dark compact earth level 7 with no material as found. <sup>part</sup> This level 7 is probably almost breccia - since the soil was sterile. Material in level 6 becoming less and less.

Sounding C - Continued.

June 9.

C-2.

Level 4 - Sandy brown soil, tiles, ~~concrete~~

76.101P material - grey ware, black sludge. not much material. less than four in C-1 at level 4.

reddish

Level 5 -

76.102P brown soil, slightly sandy found between square wall and tile fall and a little to the east. It is found in the east near the wall base. This layer is very thin. 1.5 cm

material - little, but a ~~chunk~~ black-slag fragment found near the wall base. ~~fragment~~ ~~base~~

After level 5 ~~in the east~~ breccia is found as it was in the east of the square.

Level 5 then appears on both sides of the square wall base in C-2.

C-3.

Level 4 - brown, sandy with tiles, extends for 1.60 m East of wall in this section. To the east, near the easternmost

76.103P

wall, breccia is reached at -45 cm from the south scarp. Breccia is not reached in the west of this square until -72 cm from the south scarp.

76.104P

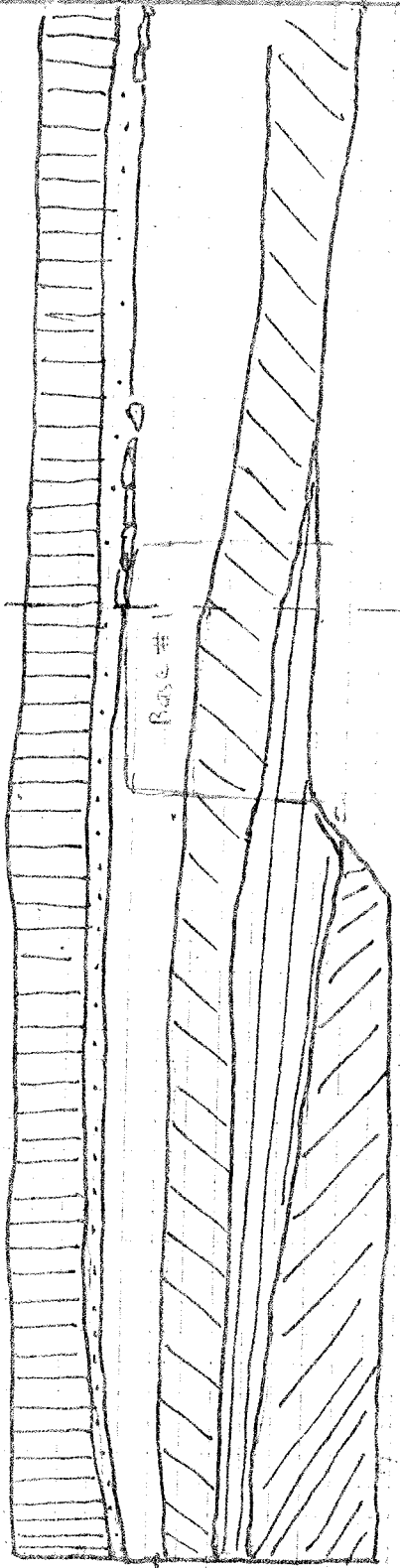
material in level 4 - grey slag, coarseware, no black sludge. very shallow level.


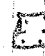


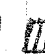

1.25  
N ↑

Sounding B + Sounding C E-W Section N Face.

B  
C-1

B  
C-2



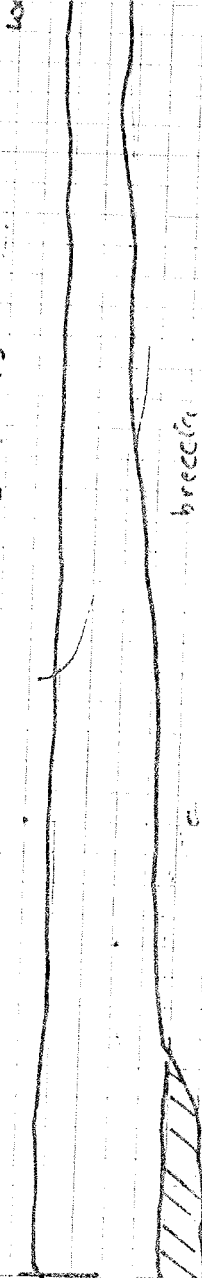
-  = level 1 3/8 10 yr dark grayish brown
-  = level 2 5/8 10 yr grayish brown. claylike
-  = level 3 5/3 10 yr brown, tiles.
-  = level 4 4/4 10 yr dark yellowish brown. - sandy with gravel. much material, tiles
-  = level 5 4/4 7.5 yr dark brown. sandy, tiles
-  = level 6 4/4 7.5 yr dark brown. more claylike, less material than 5.

31

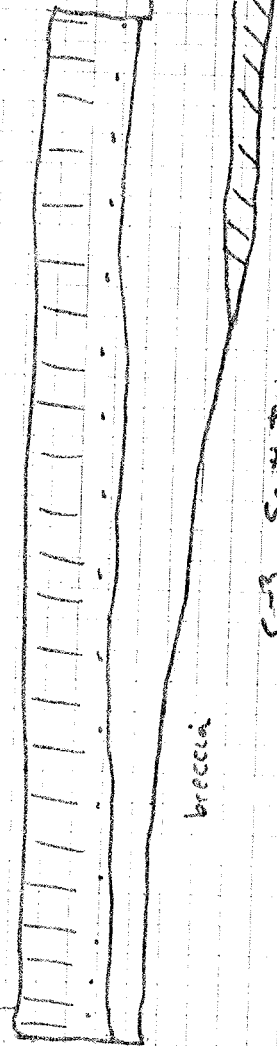
omission of wall to  
ft. section B-3  
on this page.  
(see south face  
section of C-3  
below)

C-3

on this face, levels 1 + 2 removed in 1975



levels 1 + 2  
buried here

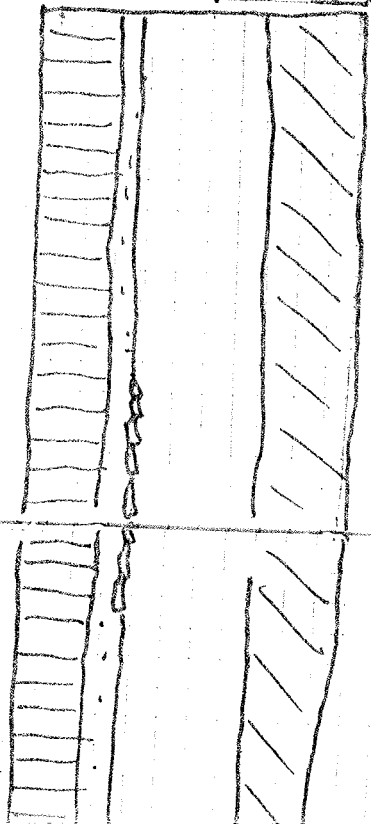


C-3 South Face



B

C-2

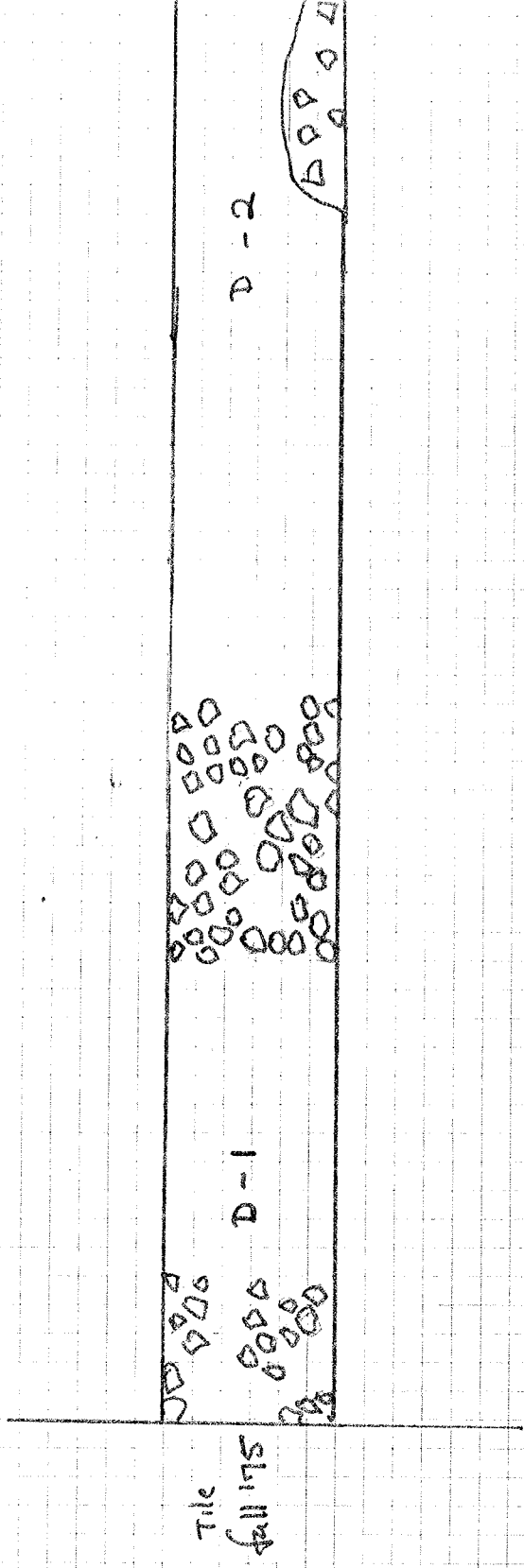


breccia



8  
2  
1:50

Sounding D - Top Plan



D-2

D-1

tile  
fall 175

Sounding D.

(B110, B111, B112).

June 9.

39

Sounding B is 1.20 x 12.50 M, running approximately E-W (NE-SW) which is the continuation to the west of sounding C. It begins west of the monument and continues NE to the tile fall excavated in 1975 in B112.

76.107P

76.108T

76.109M

level 1, plowed earth removed in areas unexcavated in 1974 or 1975. Level 1 is quite deep c.30cm.

level 2 - gray, harder earth found under level 1.

76.110P

76.111P

monumental wall.

c. 3.40 m from the west end of D, a tile + stone area is found as well as the continuation of the tile fall in B112 at the west end.

The area between this new tile-stone area and the tile fall in the west will be known as D-1. The area east of the tile stone area to the monumental wall in the extreme east will be known as D-2.

A small area of tiles was also found in D-2 at about # M from the monumental wall. This tile area occurs at the south side of the trench and extends N about 40 cm. It is about 3 m long with the heaviest concentration of tile in the east.

This tile area in D-2 is 96 cm from the top of stake C110. The tile fall in sounding B is 20 from the top of the stake.

76.112P

D-2. Level 3 - under tile level. <sup>moist</sup> hard, light brown soil.

note level 3. D-2. rim of red slate; coarse ware, black-slate fragment, little material.

June 10.

41

D-2. Level 4 - sandy small stones, reddish brown. A few tiles.  
 76.113P material - black glaze fragments, 2 painted found with 1 m  
 west of monumental wall.  
 76.119P As we dig towards the west - less material found.

As we dig lower, less material, more gravelly soil.

76.120P perhaps a small fragment. Most material has been  
 black glaze, very little clayware.

76.121P Large fragment of black glaze with a pattern of rays.

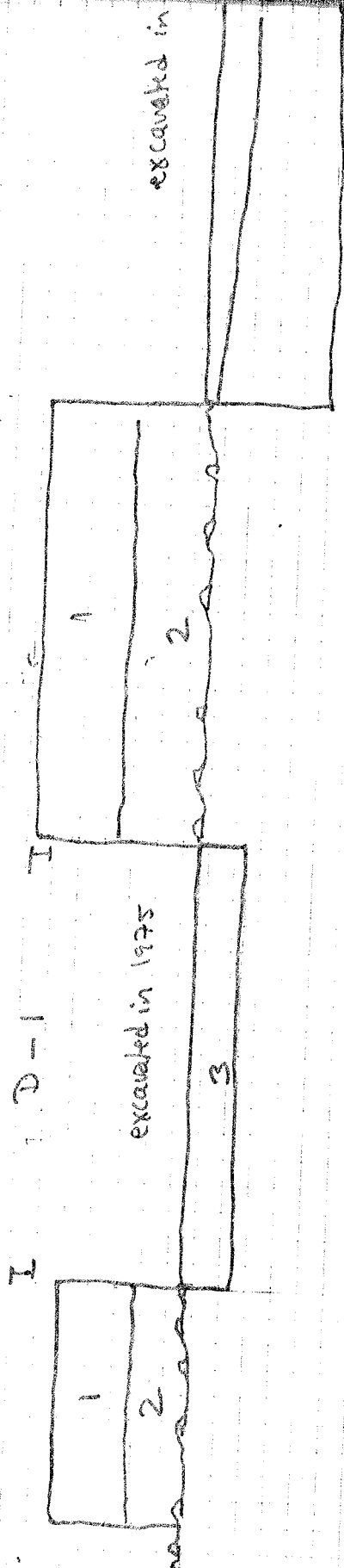
virtually no breccia; found 60 cm from the top of the  
 monumental wall. It is found at 85 cm towards  
 the west, as the ground seems to slope.

D-1 Level 3 excavated between the tile fall at the east and  
 76.118P the tile-stone area.

- 1 = 3/2 10YR - v. dark gray brown
- 2 = 5/2 10YR grayish brown
- 3 = 5/3 10YR brown
- 4 = 4/4 10YR dark yellowish brown.

(clay like - harder than 1)  
 here moist light brown.  
 sandy small stones reddish brown.

I



Sounding D E-W section

N Face.

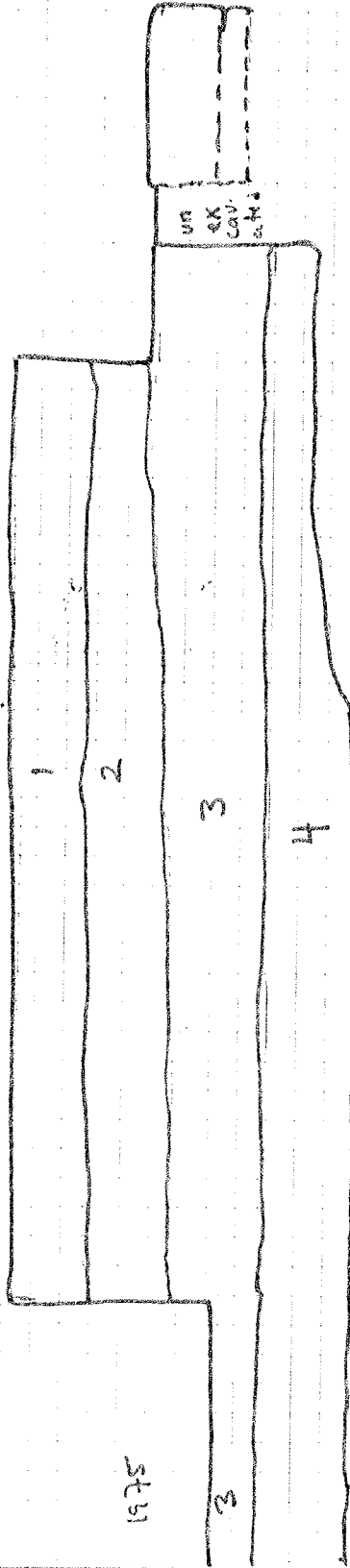


1:25

43

D - 2

I



excavated in 1975

3

3

4

UN EX CAU. 2.4m

1/1

N  
↑

base # 2



Sounding  
B  
Tidefall

Base #3



Base #4



June 10

Sounding E was begun to determine if there were any more wall bases like the one found in sounding B running N of the original one. Accordingly, a sounding 1150 X 4 was made N of the original base (now called base #1) perpendicular to sounding B.

level 1 - plowed earth. About 28 cm from surface another base discovered in line with base #1.

Level 2 found over this base + also tile under this level - level 2 - gray harder soil as in sounding B.

A large brick (?) with a stucco fragment attached a also in the south east of base #2.

base #2 - 78 X 78 - composed of stones, some squared. It is smaller than #1. Base #2 is 3.30 m from base #1.

June 11.

Sounding E is extended N (A18) to see if another base can be found.

Level 1 - plowed earth.  
Level 2 - gray earth.

base #3 found 3.53 from base #2. This base is composed of squared lime-

3.80 to N wall.

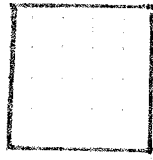
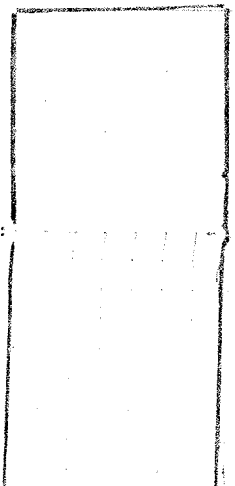


TABLE OF DISTANCES - (measured from centers)

Measurement	Distance	Direction
Monumental wall	3.90	←
Base 1	3.30	↕
Base 2	3.53	↕
Base 3	3.30	↕
Base 4	3.80	←
East wall	4.30	→
	4.40	↔
	4.50	↔



June 11

Sounding E

47

stones. This base however is more to the NE than base #2. Base 78 x 80  
 Since the base #3 is slightly to the NE the sounding joss to the east about 50 cm + continues to the N to try to pick up another base level 1 - plowed earth.  
 level 2 say earth.

base #4 found. 77 x 76, squared limestone blocks. it is 3.30 M N of #3.

June 14 Sounding E extended 3 M to the N. base #5 is present. No base is found. (now a square 1.50 x 1.50 (2.5)) perhaps there was something soil by + gravelly in level 2. tile frags. No finds.  
 level 1 plowed earth.

1 small 1M square 1.70 M N of where base 50 should have been appears. This square is 3.80 M from the N wall - the same distance as base #1 from the S wall. No trace of a well found.



49  
Removal and cleaning of Baulks. June 14 + June 15.

The following Baulks were removed to level of the tile fall in A12 (primarily).  
Level was removed from the baulks.

E-W baulk A12 + A112 - under this baulk a section of the south wall of the rectangular building was found.

N-S baulk A13 + A13. Tile fall continues under it.

N-S baulk A13 and B13.

Find - note bronze handle (?) + metal plan blade - level.

June 15.

E-W baulk A13 + B13.

E-W baulk A13 + B13. - (overweight + small glass on-level).

June 28.

Cleaning of tile fall in A12 + A11, south of south wall of rectangular building.  
Charcoal found in tile fall - saved.

South wall of rectangular building found to have 2 courses in several places in the cleaning of this wall, tiles can be seen under the wall.

June 14 Kien

Cleared Precambrian rocks and reached a level of burned rock compacted. Under the ash at the level of the 'ash pit' appears a hard curved surface which is covered or filled over by the burned rock work stopped at noon. The hard surface appears to belong to early phase of

June 15. Removed the fill under left side of the ash and began excavating the pit filled with hard stone. Burned material found on the hard surface of the pit.

Samples taken. 76-14855 76-15155 76/18255

Bruno excavated the wall of the platform surrounding the ash pit. There are two periods underlying the space between the ash should slope down towards pit,

53  
according to Santavalla which was kid in  
family which kid at Bernadina ~~the~~ ~~possess~~ if this  
proves to be the case the platform is a later  
addition. Bruno found out a piece of tile  
with mortar(?) which he believes ~~is~~ is part  
of the original mortar of the first level.



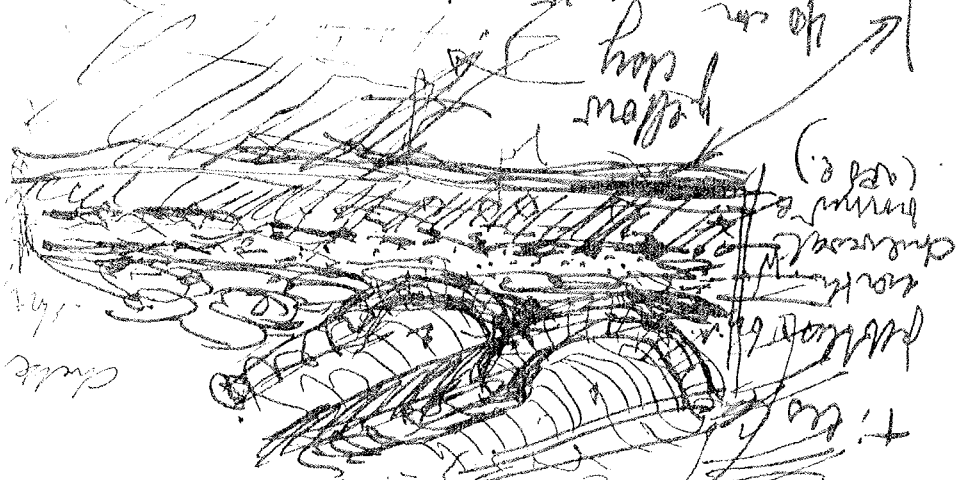
Kiln 2

1.5 m PRATVRKIM

white mud

yellow clay

to see

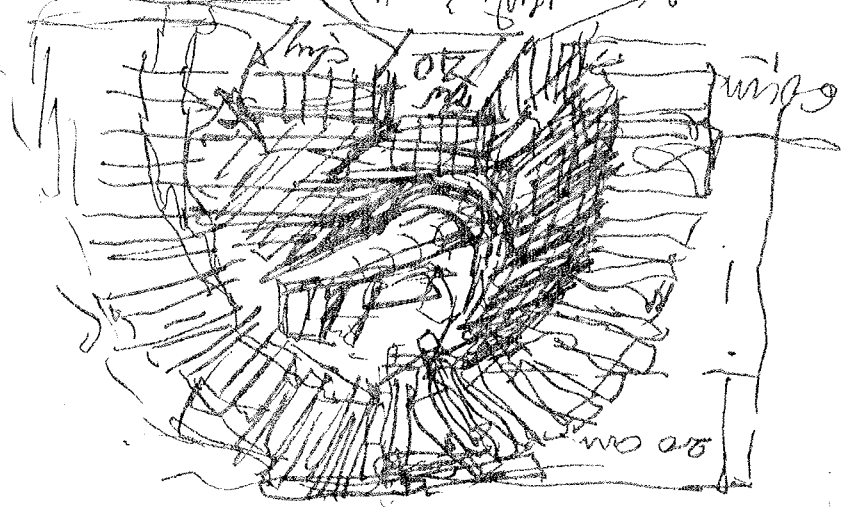


chessnut (red)

black

chute

brick (red)



July 9, 1966

Rain over the weekend has prohibited  
further activity in the southern area of the site.  
Site lead, I worked on this today in my more  
B12. Samples were taken for analysis in  
Austin; each tile was drawn and labeled.

A structure of ~~Isos~~ Lacanian and Cornelian  
occurs. D. Emmons reported last year he believed  
the tiles to be arranged in alternate rows of  
Lacanian (curved) and Cornelian (flat). I  
have not observed enough flat pan tiles to  
verify this hypothesis.

### June 8

Again working on tile in A12. Three almost  
complete Lacanian tiles were recovered. Samples  
were taken west of wall Beta west. Whole  
clay gulf wall line, 2 metal pegs were  
sited at the bottom of the floor next to the  
wall. These pegs may have been attached  
to the wooden beams supporting the tiles.

Small amounts of charcoal were noted in 61 this area, within the tile fall. One sample was collected. *Terra sigillata pottery* was collected from next to the wall line.

June 9

Again working in A'12, west of wall Beta west. More burned material was found - charcoal, 2 more metal pegs which appear burned, many bands. Many of the tiles were very brittle and were in small fragments. This could have been a result of burning. However, charcoal wasn't in nearby concentrations, so this is somewhatly doubtful. The tiles appear to fall on the floor. A soil change to light brown and more compact earth (many) indicate the level of the floor.

A rounded tile fragment (south of rectangular structure Fl. 117) wall line, west of

Beta west) was collected. This was labeled 63  
FIND. ↑ N                      RECT. STRUCT. N. WALL

FIND X                      K BETA W

The tile floor extends up to the rectangular structure. Charcoal was noted in this area also. The tiles are normally Lacomian aetho - Some Cornelian pan tiles were noted, although less frequently than the surround. Most were too small to be helpful in proper drawings, but give an indication as to materials and forms used. Almost all the tiles were red, both ~~to~~ Lacomian and Cornelian.



B13

B12

DRAWING NOT TO SCALE

N. WALL OF REC. STRUCTURE

ROUNDED ARCHIT. FINE CHARCOAL

TILE FALL

← WALL ECTA WEST

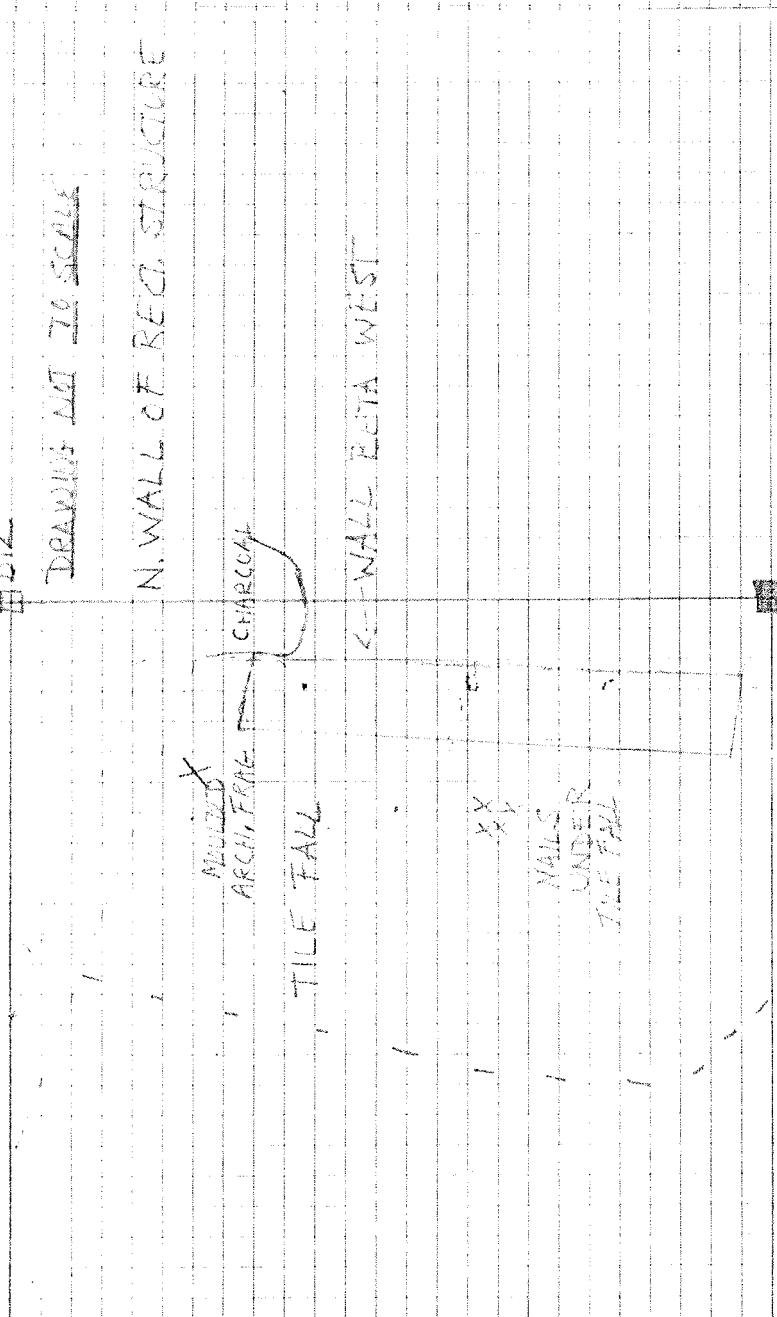
XX  
XX

NAILS UNDER TILE FALL

A13

A13

A12



Hilltop - walls

Rectangular building

SW corner A 13

Date: ? ?

69

Conerstone is a block of conglomerate  $46 \times 36$ .  
At the corner the wall was originally 60 cm wide and the conerstone would have had a notch to the west.

The south wall is closer to 65 cm wide at the corner, but narrows to 50 cm at east. It may be that there are several courses underneath, just that is not possible and that the foundation course is uniformly 65-60 cm wide.

From the inside corner the wall extends 120 cm to the NE and is uniformly about 60 cm wide. There is part of upper course still in situ - Two blocks of limestone  
Compositions of which is equivalent blocks of

limestone and conglomerate.

At 70 cm. from inside corner in S. wall is a piece of column. 4.5 cm long and 3.5 cm. in diameter. The fallen tiles around this corner suspect it apparently.

There is an opening in the west wall which is 2.75 cm. wide. Part of the pavement of small chips of TC. were found to south of the southernmost block of the north extension of west wall. This battens is slightly below the level of the tile ~~is~~ fall. Above it this southernmost block is a block of conglomerate 40 cm wide + 65 cm long. Above it is another masonry. But shorter block having marks of the plan? ~~is~~ on plan in top.

Corner stone is missing.

N. extension of W. wall is 120 cm long, measured from inside corner. F. den trail to South extends N.

Wald

Date?

75

C'6 - two blocks on level Sudan going to wall

58 cm. wide x 44 cm. long

58 cm. wide x 52 cm. long

The larger block appears to be limestone, while the smaller is a conglomerate very fine, some shells.

D'6 - two stones in line

48 cm wide x 56 cm. long

- Southern

Northern has same limestone, it, however, is a coarse conglomerate with many shells.

The conglomerate of southern block

resembles that of northern of two blocks in C'6.

Walls

77

C'9, B'9 wall Hamma East starting from  
southernmost of conglomerate blocks

58 W x 82 L

68 W x 94 L

65 W x 94 L x 27 T

67 W x 98 L x 30 T

63 W x 90 L

60 W x 104 L

Block displaced 70 W.

46 W x 90 L

Blocks further to north in A'9?

46 W x 60 L

45 W x 40 L This stone is a more compact

sort of limestone, with no shells.

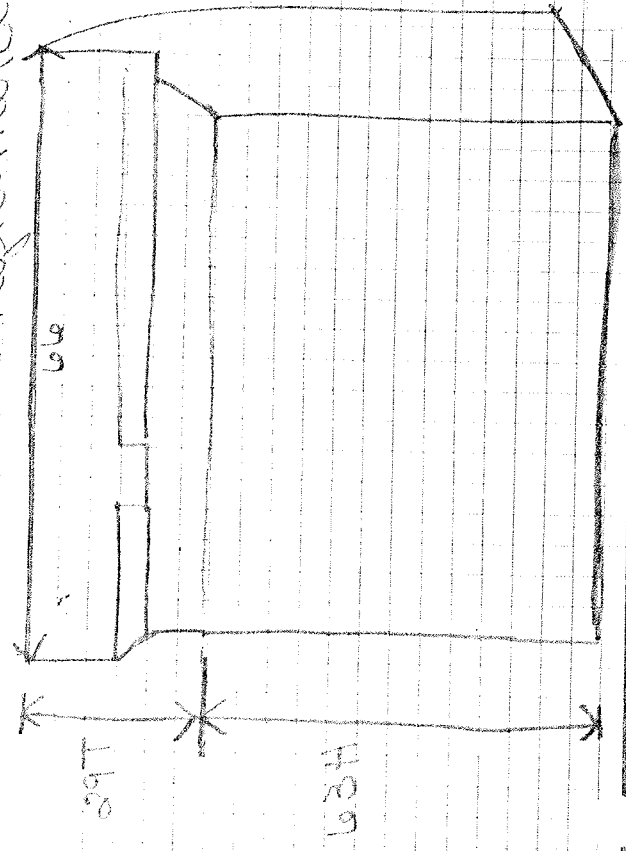
D'8 SW corner of unraped building  
54w x 94 long conglomerate like that in SE

Foundation course in c'9 in 65 w  
E'13 E end of west below rim

wall to west of Platform  
62w x 88 h x 4c T, same conglomerate as  
interumental blocks in SE

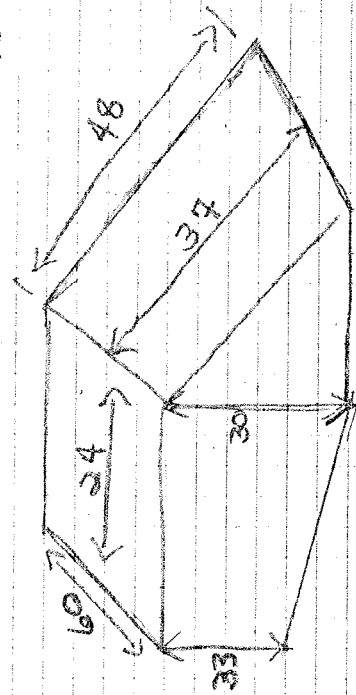
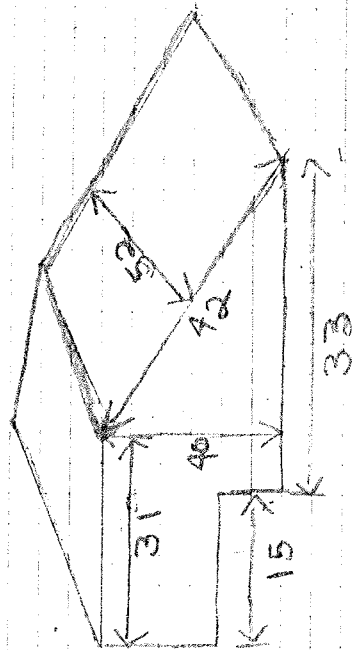
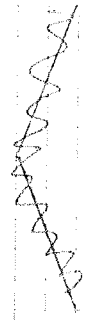
w of Platform weight block

66w x 96 h x 48 T, same conglomerate as  
in wall

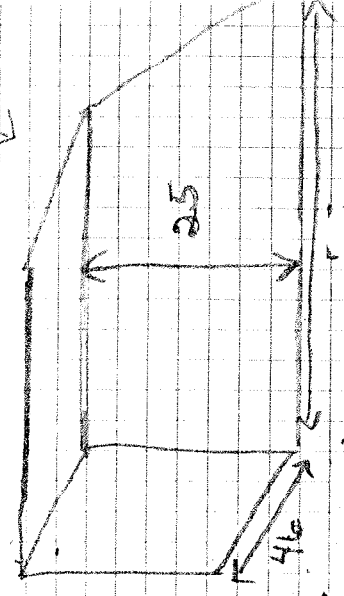


Highest course, longitudinal 63 W x 43 h x 30 T 81  
 next lowest course, 62 W x 82 h x 50 T  
 both stones are of same configuration

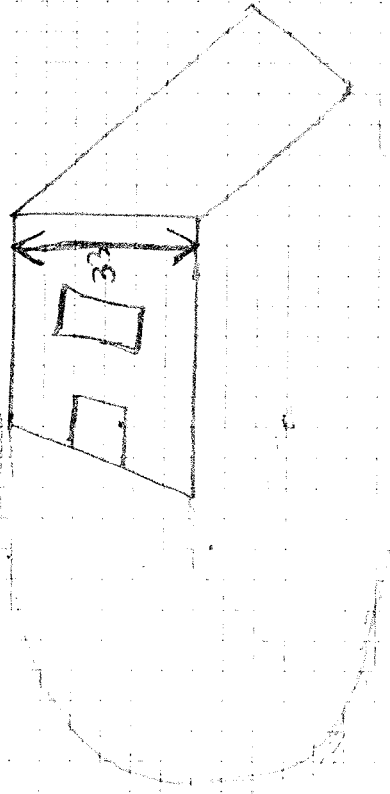
Arch from rim



unstone



limestone block with damp holes  
33 mm wide





Sun Fri

May 27

85

Spring Creek

Conglomerate

block

W.

L.

Fr.

68

96

30

limestone

H.

W.

L

block

62

40

114

wing limestone

Fr.

W.

L

30

68

96

limestone

L

Fr.

116

40

Temple on hill

column down dia.

0.41

limestone block

W

L

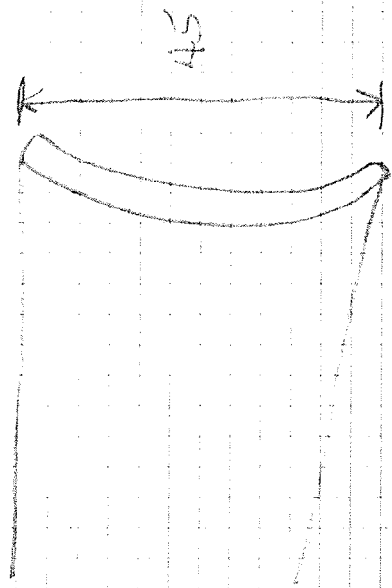
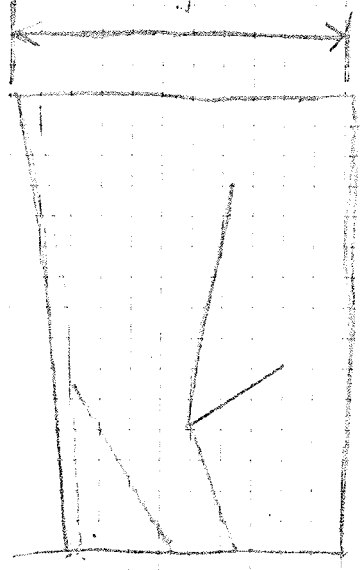
65

125

Tubes

A 13 out side 8 W

87



Four welding complete large can also. After  
 ready for the large can in a close to wall  
 Two and  
 3  
 8

Walls A'13

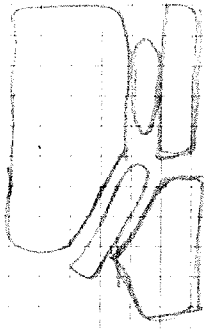
89

Blocks of conglomerate 47 W x 58 L

19 W x 60 L

Type of construction:

While the squarish blocks is a mixture of smaller stones with a flat surface only on outer face. The inter spaces are filled with mud; conglomerate and chunks of "pudding". Same type of construction as in B'12.



Walls B'12

Lowest course composed of hard stones and small fragments of the which rest on sandy gravel. Next a leveling course of blue. On top of that two rows of squared blocks only the outer face is always flat.

Hydratone block 26 W x 30 H x 43 L

91

Hydratone

44 D x 22 H

Structure blocks of complex with broken  
the need for lining  
C's O'head & 3000?

Part of liquid column. down

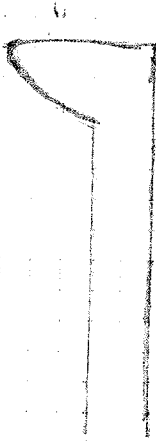
Traces

93

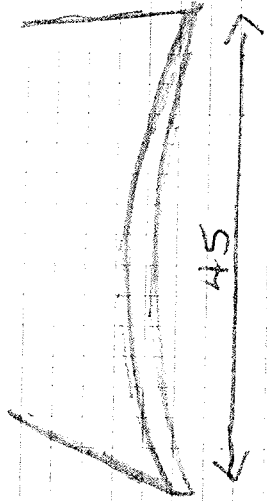
B'12 large collection of "cupps" or narrow chubs  
cover traces



Some flat pan tiles with high ridges



Some of the big pan tiles

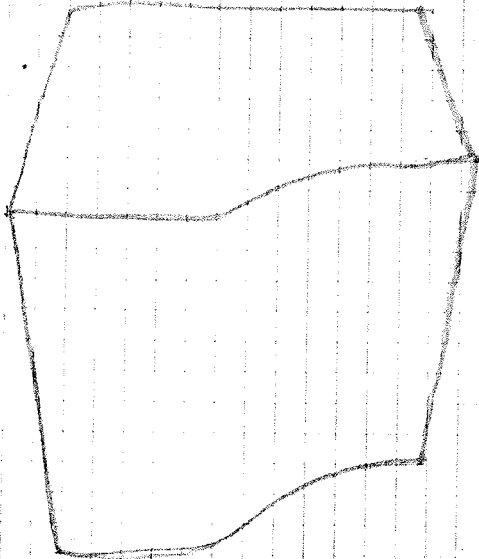


Filed

95

C 10

Wall of 71 shaped building  
this used for product 1000 Y 30000



Walls A'10 / B'10

Limestone blocks in alpha building

A8 W x 106 L

A8 W x A3 L