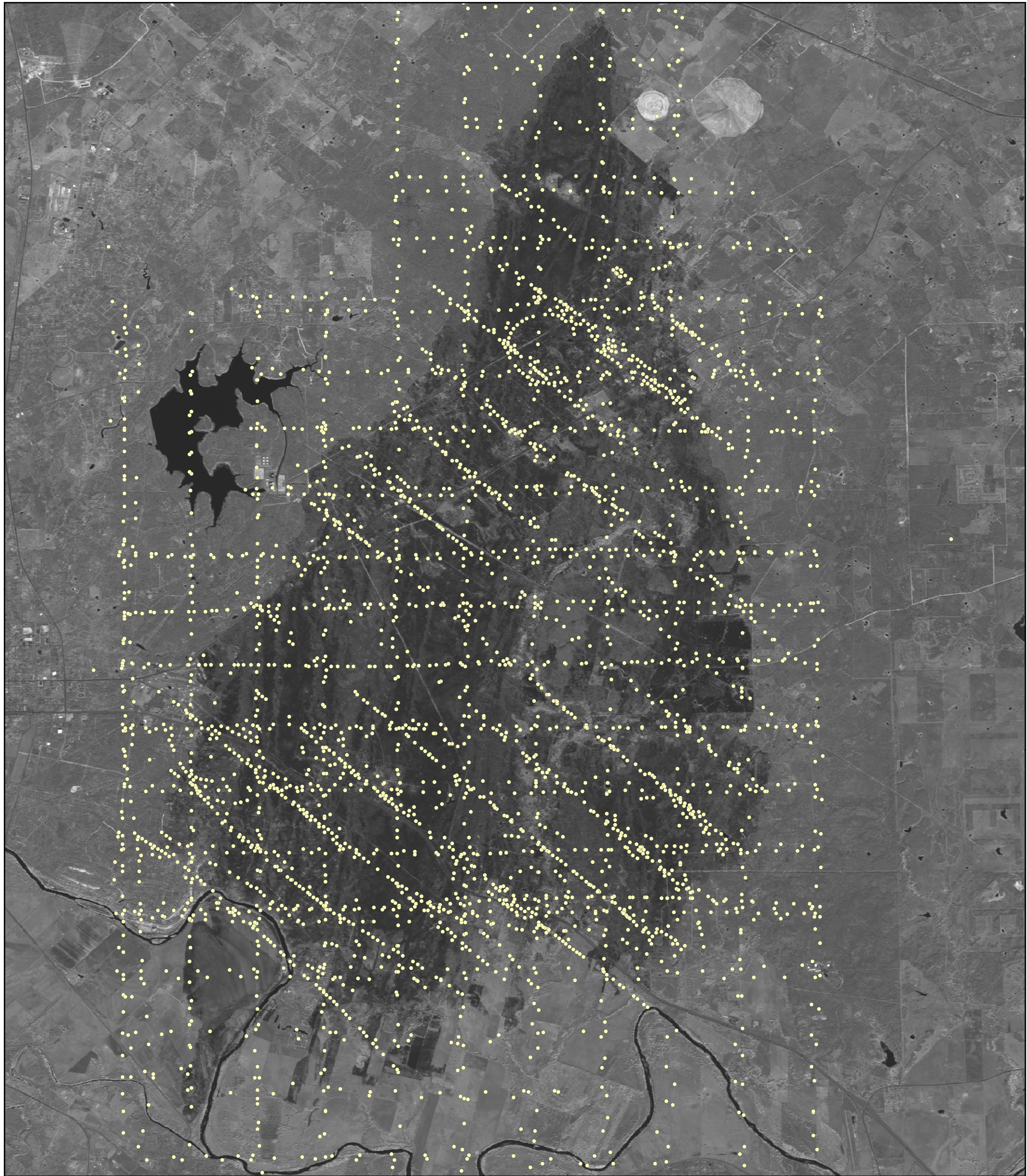


# TXCAP Photograph Locations over the Bastrop County Complex Fire



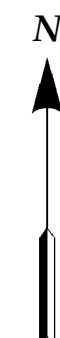
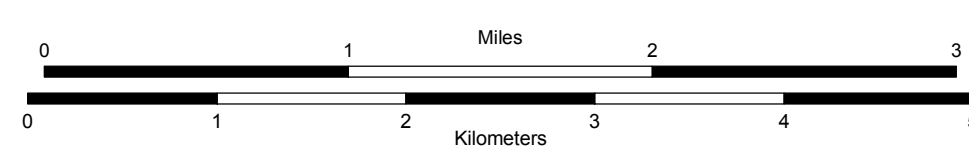
Includes material © CNES 2011. Distributed by Astrium Services / Spot Image S.A., France, all rights reserved  
 SPOT 5 multispectral image collected by USAF Eagle Vision on September 20, 2011 at 12:04 CDT  
 Picture element size is 10 meters. Image channels shown are shortwave infrared (R), near infrared (G) and visible green (B).

SCALE 1:40,000



USAF Eagle Vision is licensed to receive telemetry from the French SPOT 5 satellite via direct downlink when it passes over the network of Eagle Vision's mobile ground stations. EV personnel produce tailored products for electronic delivery. The Center for Space Research receives data from EV and develops products for federal, state and local emergency response operations.

The Texas Civil Air Patrol collects oblique photography using GPS-enabled Nikon cameras



Texas Civil Air Patrol  
 Photography Surveillance

● Aircraft Nadir Point

Imagemap Composition by M. T. Howard and G. L. Wells

September 22, 2011

<http://magic.csr.utexas.edu/Event/11TxWildfires/Imagery.cfm>



Center for Space Research  
 The University of Texas at Austin  
 3925 W. Braker Lane, Ste. 200, Austin, TX 78759  
 (tel.) 512-232-7514 (fax.) 512-232-2443  
[www.csr.utexas.edu](http://www.csr.utexas.edu) [magic.csr.utexas.edu](http://magic.csr.utexas.edu)

