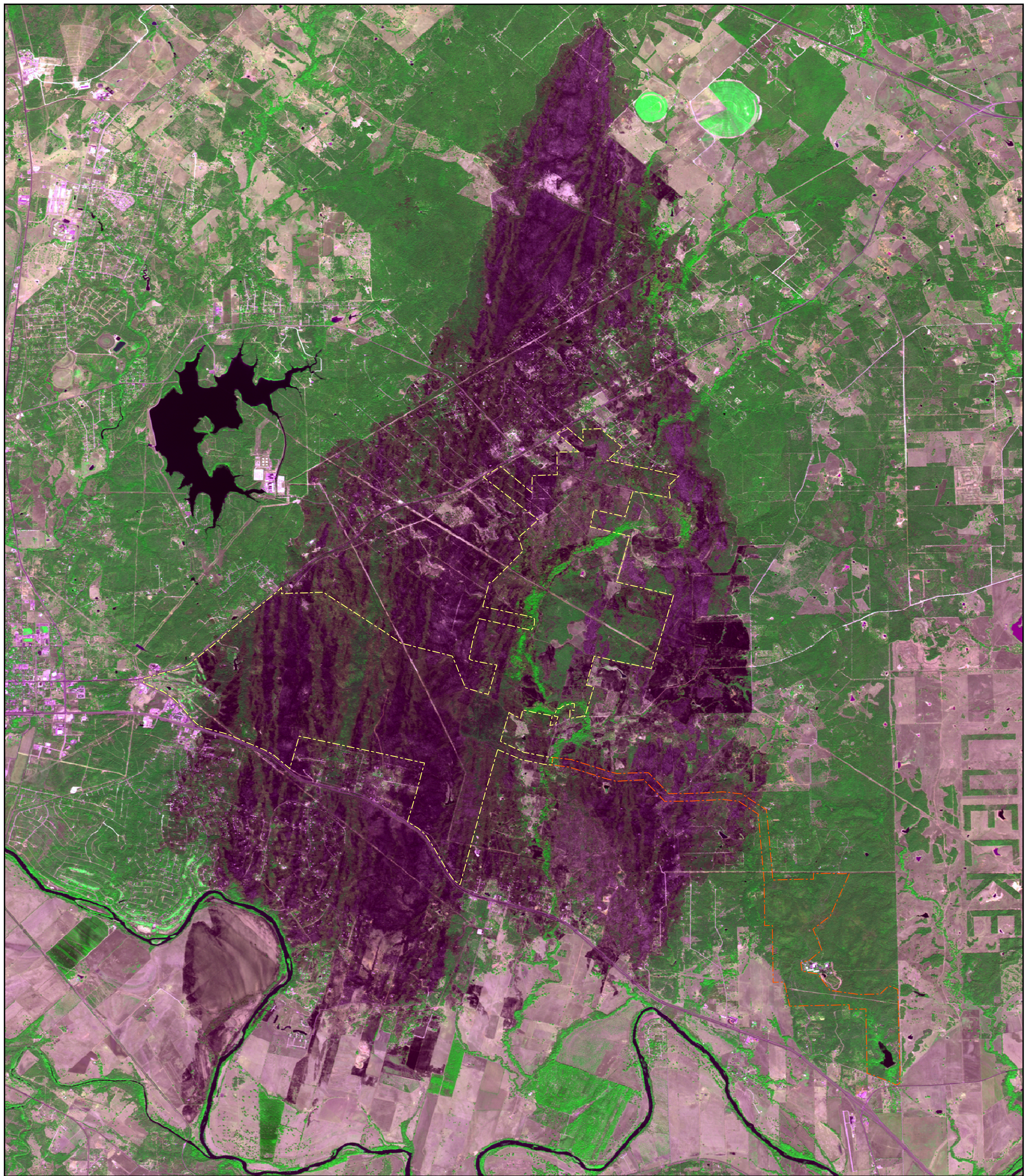


Aftermath of the Bastrop County Complex Fire



Includes material © CNES 2011. Distributed by Astrium Services / Spot Image S.A., France, all rights reserved

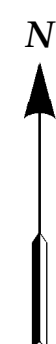
SPOT 5 multispectral image collected by USAF Eagle Vision on September 20, 2011 at 12:04 PM CDT.

Picture element size is 10 meters. Image channels shown are visible red (R), near infrared (G) and visible green (B).

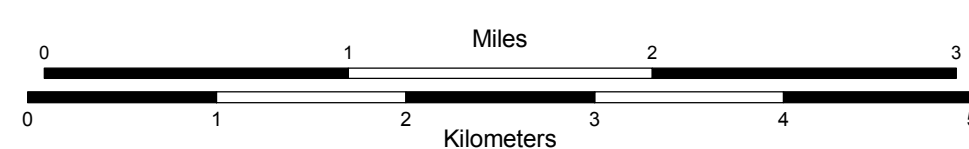


USAF Eagle Vision is licensed to receive telemetry from the French SPOT 5 satellite via direct downlink when it passes over the network of Eagle Vision's mobile ground stations. EV personnel produce tailored products for electronic delivery. The Center for Space Research receives data from EV and develops products for federal, state and local emergency response operations.

Center for Space Research
The University of Texas at Austin
3925 W. Braker Lane, Ste. 200, Austin, TX 78759
(tel.) 512-232-7514 (fax.) 512-232-2443
www.csr.utexas.edu magic.csr.utexas.edu



SCALE 1:40,000



Imagemap Composition by M. T. Howard and G. L. Wells
September 23, 2011

<http://magic.csr.utexas.edu/Event/11TxWildfires/index.cfm>

